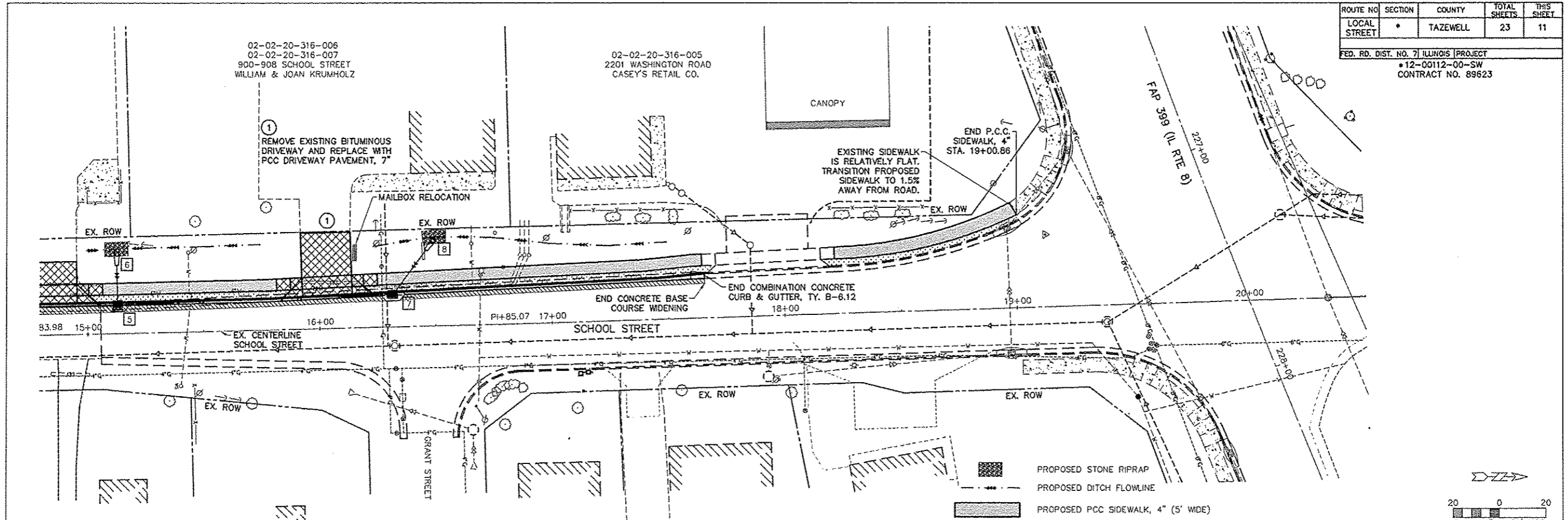


ROUTE NO	SECTION	COUNTY	TOTAL SHEETS	THIS SHEET
LOCAL STREET	*	TAZEWELL	23	11
FED. RD. DIST. NO. 7 ILLINOIS PROJECT				
*12-00112-00-SW				
CONTRACT NO. 89623				



STORM SEWER STRUCTURE DESCRIPTIONS

- 5 INLET MANHOLE, TY. A, 4' DIA., TY. G-1 FRAME & GRATE - 12.35' LT. STA. 15+13.00, T/C 748.38, E/P 747.94, INV. 744.37 (15"S), INV. 744.47 (12"N), INV. 744.49 (12"W)
- 6 PRECAST REINFORCED CONCRETE FLARED END SECTION, 12", 35.3' LT. STA. 15+13.00 INV. 745.20 (12"E)
- 7 INLETS, TYPE G-1, 13.93' LT. STA. 16+31.57, T/C 750.00, E/P 749.58, INV. 746.46 (12"S), INV. 746.58 (12"NW)
- 8 PRECAST REINFORCED CONCRETE FLARED END SECTION, 12", 37.4' LT. STA. 16+50.00 INV. 747.10 (12"SE)

STORM SEWER PIPE SCHEDULE

- 4 - 5 STORM SEWERS, CLASS A, TYPE 2, 15" 135 FT. @ 1.70%, T.B.(ST.S.) = 35 C.Y.
- 5 - 6 STORM SEWERS, CLASS A, TYPE 2, 12" 16 FT. PLUS FES @ 3.25%, T.B.(ST.S.) = 3 C.Y.
- 5 - 7 STORM SEWERS, CLASS A, TYPE 2, 12" 117 FT. @ 1.70%, T.B.(ST.S.) = 30 C.Y.
- 7 - 8 STORM SEWERS, CLASS A, TYPE 2, 12" 23 FT. PLUS FES @ 1.80%, T.B.(ST.S.) = 4 C.Y.

- PROPOSED STONE RIPRAP
- PROPOSED DITCH FLOWLINE
- PROPOSED PCC SIDEWALK, 4" (5' WIDE)
- PROPOSED GRASS BUFFER STRIP (3' WIDE)
- PROPOSED PCC DRIVEWAY PAVEMENT
- PROPOSED PAVEMENT WIDENING
- PROPOSED UTILITY PATCH

