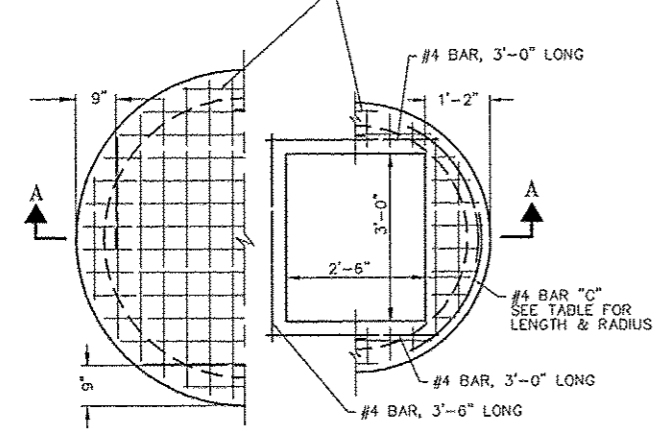


NOTES:  
 ALL CONCRETE USED FOR CONSTRUCTION OF THE INLET MANHOLE SHALL BE CLASS "SI" CONCRETE.  
 THIS ITEM SHALL INCLUDE THE INLET MANHOLE (4', 5' & 6' DIA.) COMPLETE IN PLACE AS INDICATED HEREIN, INCLUDING INLET CASTINGS, NECESSARY EXCAVATION, PRECAST REINFORCED CONCRETE MANHOLE PIPE RINGS.  
 ARTICLE 602.15 SHALL NOT APPLY, THIS ITEM SHALL BE PAID FOR AT THE CONTRACT UNIT PRICE FOR "INLET MANHOLE" AS SPECIFIED WHICH SHALL BE PAYMENT FOR ALL LABOR, MATERIAL, TOOLS, AND EQUIPMENT NECESSARY TO PERFORM THIS ITEM OF WORK, AS INDICATED.

TABLE

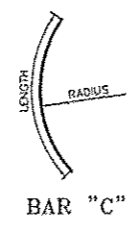
X	D	T	Do	t	REINFORCEMENT "As" WELDED WIRE FABRICS EACH DIRECTION		BAR "C"	
					BAR SIZE	LENGTH	RADIUS	
0'-0"	4'-0"	5"	4'-10"	6"	.70 SQ.IN./LIN.FT.	#5	4'-6"	2'-2"
0'-7"	5'-0"	6"	6'-0"	8"	.70 SQ.IN./LIN.FT.	#5	5'-0"	2'-8"

WELDED WIRE FABRIC TOP & BOTTOM SEE TABLE FOR "As" IN EACH DIRECTION

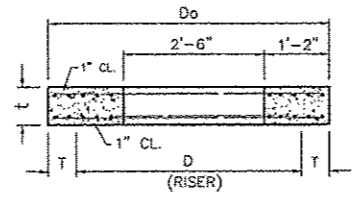


PLAN

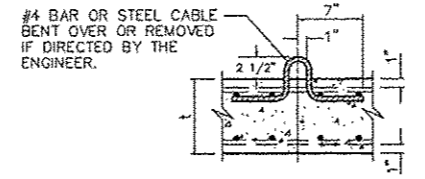
PRECAST REINFORCED CONCRETE FLAT SLAB TOP



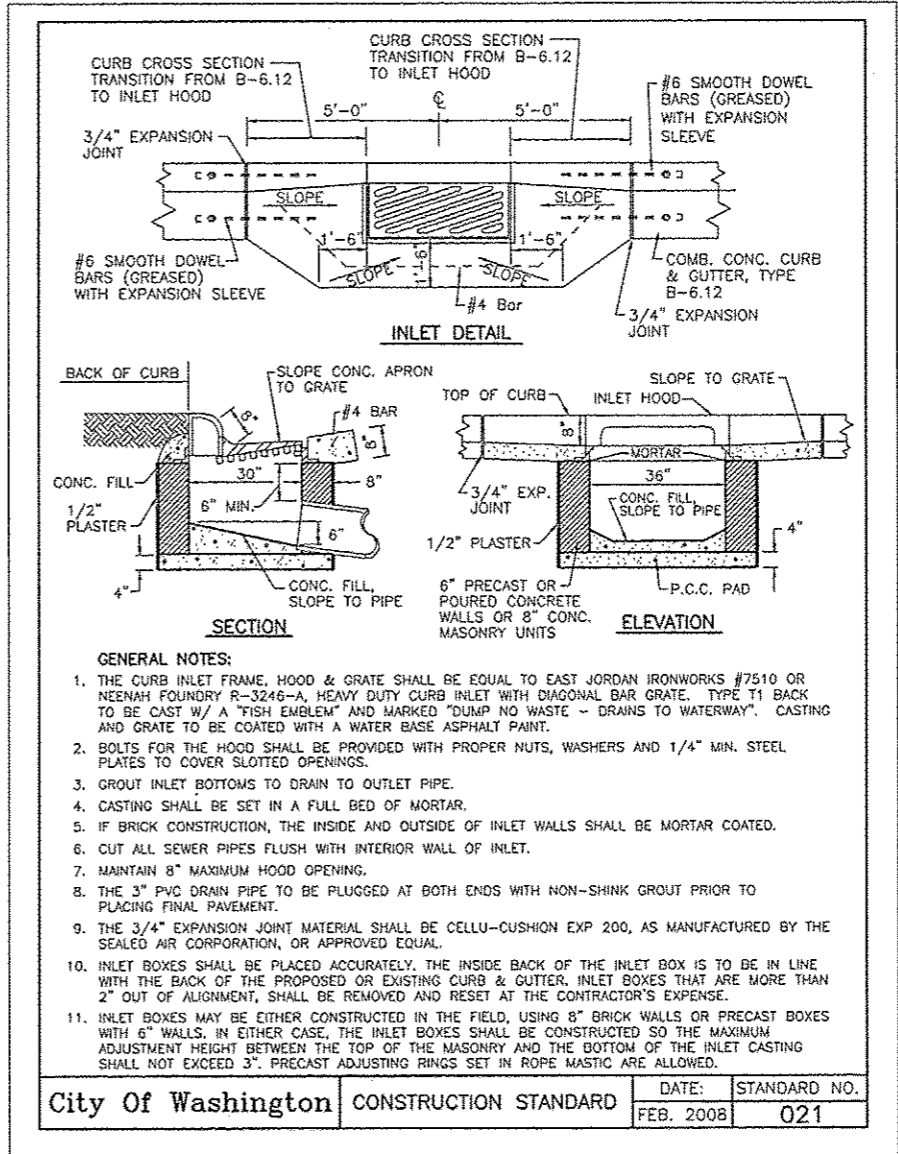
BAR "C"



SECTION A-A



LIFTING LOOP -TYPICAL- (3 REQUIRED PER SLAB)



GENERAL NOTES:

1. THE CURB INLET FRAME, HOOD & GRATE SHALL BE EQUAL TO EAST JORDAN IRONWORKS #7510 OR NEENAH FOUNDRY R-3246-A, HEAVY DUTY CURB INLET WITH DIAGONAL BAR GRATE. TYPE T1 BACK TO BE CAST W/ A "FISH EMBLEM" AND MARKED "DUMP NO WASTE - DRAINS TO WATERWAY". CASTING AND GRATE TO BE COATED WITH A WATER BASE ASPHALT PAINT.
2. BOLTS FOR THE HOOD SHALL BE PROVIDED WITH PROPER NUTS, WASHERS AND 1/4" MIN. STEEL PLATES TO COVER SLOTTED OPENINGS.
3. GROUT INLET BOTTOMS TO DRAIN TO OUTLET PIPE.
4. CASTING SHALL BE SET IN A FULL BED OF MORTAR.
5. IF BRICK CONSTRUCTION, THE INSIDE AND OUTSIDE OF INLET WALLS SHALL BE MORTAR COATED.
6. CUT ALL SEWER PIPES FLUSH WITH INTERIOR WALL OF INLET.
7. MAINTAIN 8" MAXIMUM HOOD OPENING.
8. THE 3" PVC DRAIN PIPE TO BE PLUGGED AT BOTH ENDS WITH NON-SHINK GROUT PRIOR TO PLACING FINAL PAVEMENT.
9. THE 3/4" EXPANSION JOINT MATERIAL SHALL BE CELLU-CUSHION EXP 200, AS MANUFACTURED BY THE SEALED AIR CORPORATION, OR APPROVED EQUAL.
10. INLET BOXES SHALL BE PLACED ACCURATELY. THE INSIDE BACK OF THE INLET BOX IS TO BE IN LINE WITH THE BACK OF THE PROPOSED OR EXISTING CURB & GUTTER. INLET BOXES THAT ARE MORE THAN 2" OUT OF ALIGNMENT, SHALL BE REMOVED AND RESET AT THE CONTRACTOR'S EXPENSE.
11. INLET BOXES MAY BE EITHER CONSTRUCTED IN THE FIELD, USING 8" BRICK WALLS OR PRECAST BOXES WITH 6" WALLS. IN EITHER CASE, THE INLET BOXES SHALL BE CONSTRUCTED SO THE MAXIMUM ADJUSTMENT HEIGHT BETWEEN THE TOP OF THE MASONRY AND THE BOTTOM OF THE INLET CASTING SHALL NOT EXCEED 3". PRECAST ADJUSTING RINGS SET IN ROPE MASTIC ARE ALLOWED.

City of Washington	CONSTRUCTION STANDARD	DATE:	STANDARD NO.
		FEB. 2008	021