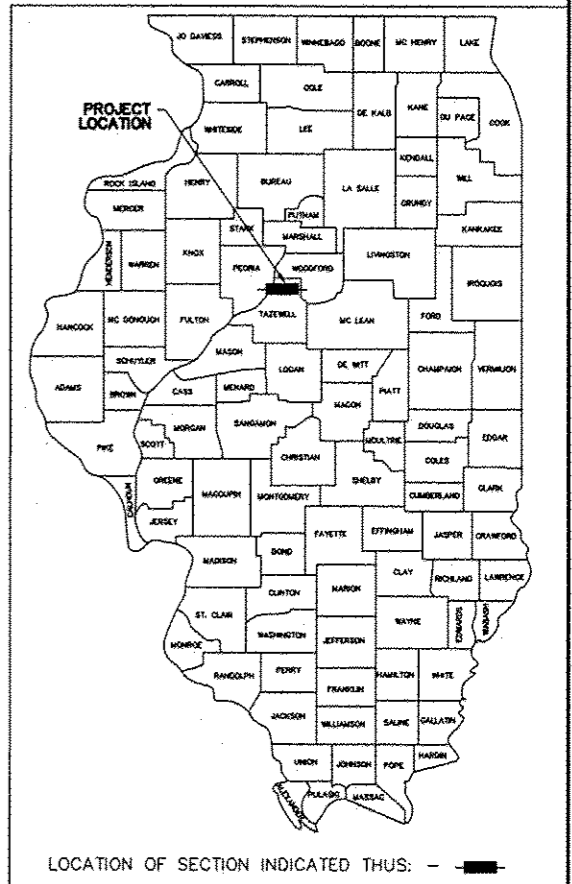


STATE OF ILLINOIS  
DEPARTMENT OF TRANSPORTATION  
DIVISION OF HIGHWAYS  
PLANS FOR PROPOSED  
BEVERLY MANOR  
SCHOOL SIDEWALK  
CITY OF WASHINGTON  
TAZEWELL COUNTY  
LOCAL ROAD (SCHOOL STREET)  
PROJECT SRTS 4009 (280)  
SECTION 12-00112-00-SW  
JOB NO. C-94-080-12

ROUTE NO.	SECTION	COUNTY	TOTAL SHEETS	THIS SHEET
LOCAL STREET	*	TAZEWELL	23	1

FED. RD. DIST. NO. 7 ILLINOIS PROJECT  
12-00112-00-SW  
CONTRACT NO. 89623

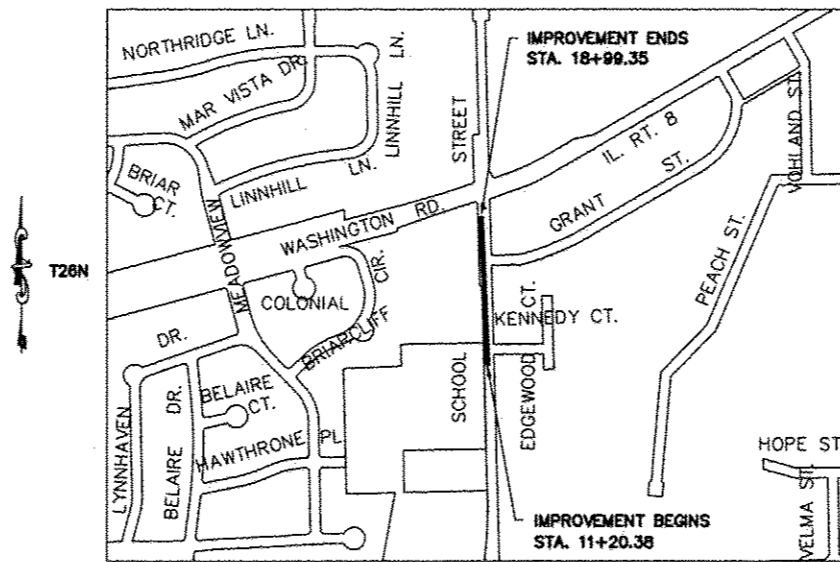


**INDEX OF SHEETS**

SHEET NO.	DESCRIPTION
1	COVER SHEET
2	GENERAL NOTES AND TYPICAL SECTIONS
3	SUMMARY OF QUANTITIES
4	UTILITY STATUS
5	SCHEDULE OF QUANTITIES / STORM SEWER QUANTITIES
6	BENCHMARKS AND CONTROL POINTS
7	TRAFFIC CONTROL AND PROTECTION PLAN
8 - 9	REMOVAL PLANS
10 - 11	PLAN AND PROFILE SHEETS
12 - 13	ENTRANCE APPROACH DETAILS
14 - 15	EROSION CONTROL PLAN
16 - 17	CONSTRUCTION DETAILS
18 - 23	CROSS SECTIONS

**LIST OF CONSTRUCTION STANDARDS**

280001-07	TEMPORARY EROSION CONTROL SYSTEMS
542301-03	PRECAST REINFORCED CONCRETE FLARED END SECTION
701501-06	URBAN LANE CLOSURE, 2L, 2W, UNDIVIDED
701901-03	TRAFFIC CONTROL DEVICES
878001-09	CONCRETE FOUNDATION DETAILS
205001-D4	SLOPE STEPS DETAIL
423106-D4	URBAN ENTRANCES, ACCESSIBLE TO THE DISABLED, FOR SEPARATED SIDEWALKS



R3W, 3rd P.M.  
LOCATION SKETCH  
LATITUDE = N40°-42'-35"  
LONGITUDE = W89°-28'-26.0"

**NET LENGTH OF IMPROVEMENT**  
**779.0 FEET = 0.148 MILES**

**DESCRIPTION OF WORK:**  
CONSTRUCTING A FIVE FOOT WIDE CONCRETE SIDEWALK ALONG THE WEST SIDE OF SCHOOL STREET ALONG WITH COMBINATION CONCRETE CURB AND GUTTER, STORM SEWERS AND DRIVEWAY ADJUSTMENTS.

**SCALES**

PLAN	1" = 20'	
PROFILE HOR.	1" = 20'	
PROFILE VERT.	1" = 2'	

CITY OF WASHINGTON, ILLINOIS  
APPROVED   
CITY-ENGINEER  
DATE 12-19-13

PASSED 01-28-2014  
  
DISTRICT FOUR ENGINEER OF  
LOCAL ROADS & STREETS  
Releasing For  
Limited Review   
2014  
DEPUTY DIRECTOR OF HIGHWAYS,  
REGION THREE ENGINEER  
STATE OF ILLINOIS  
DEPARTMENT OF TRANSPORTATION

PLANS PREPARED BY  
AUSTIN ENGINEERING CO., INC.  
PEORIA, ILLINOIS  
BY:   
DEVIN L. BIRCH, P.E.  
LIC. EXP. DATE 11/30/15

J.U.L.I.E. 1-800-892-0123

NOTE: VISIBLE UTILITY STRUCTURES WERE LOCATED BY FIELD SURVEY AS SHOWN. UNDERGROUND UTILITY LOCATIONS WERE OBTAINED FROM AVAILABLE RECORD DRAWINGS AND ARE APPROXIMATE AND MAY NOT BE COMPLETE. CONTACT J.U.L.I.E. BEFORE EXCAVATING.

COVER SHEET BEVERLY MANOR SCHOOL SIDEWALK	FOR: CITY OF WASHINGTON	DATE 12/19/13	SCALE	BOOK	REVISIONS	REVISIONS	REVISIONS	REVISIONS	REVISIONS

**CONTRACT NO. 89623**

**AUSTIN ENGINEERING CO., INC.**  
Consulting Engineers / Surveyors  
6100 North University Street  
Peoria, Illinois 61615-1270  
License No. 184-007143

20-12-009  
SHEET NO. 1 OF 23

ROUTE NO	SECTION	COUNTY	TOTAL SHEETS	THIS SHEET
LOCAL STREET	*	TAZEWELL	23	2

FED. RD. DIST. NO. 7 ILLINOIS PROJECT  
12-00112-00-SW  
CONTRACT NO. 89623

**GENERAL NOTES**

- ALL CONSTRUCTION SHALL BE IN ACCORDANCE WITH THE STATE OF ILLINOIS "STANDARD SPECIFICATIONS FOR ROAD AND BRIDGE CONSTRUCTION" CURRENT EDITION, UNLESS OTHERWISE DIRECTED BY THE ENGINEER.
- THE LOCATIONS OF EXISTING WATER MAINS, GAS MAINS, SEWERS, ELECTRIC POWER LINES, TELEPHONE LINES AND OTHER UTILITIES AS SHOWN ON THE PLANS ARE BASED ON CAREFUL FIELD INVESTIGATION AND THE BEST INFORMATION AVAILABLE, BUT THEY ARE NOT GUARANTEED, IT SHALL BE THE CONTRACTORS RESPONSIBILITY TO ASCERTAIN THEIR EXACT LOCATION FROM THE UTILITY COMPANIES AND BY FIELD INSPECTION.
- THE CONTRACTOR SHALL BE RESPONSIBLE FOR THE PROTECTION OF ALL UTILITIES WITHIN THE CONSTRUCTION LIMITS. IF ANY UTILITY IS DAMAGED DURING THE COURSE OF CONSTRUCTION, THE UTILITY OWNER SHALL BE NOTIFIED IMMEDIATELY. THE CONTRACTOR SHALL BE RESPONSIBLE FOR ANY EXPENSES INCURRED TO REPAIR THE UTILITY.
- IF A UTILITY CONFLICT ARISES WHICH WILL RESULT IN A POTENTIAL DAMAGE TO A UTILITY OR WILL CAUSE THE DESIGN TO BE REVISED, CONTACT THE ENGINEER.
- ALL ELEVATIONS SHOWN REFER TO U.S.G.S. DATUM AT MEAN SEA LEVEL UNLESS OTHERWISE NOTED AND ARE TO FINISHED GRADES UNLESS OTHERWISE NOTED.
- DRAINAGE AND STORM STRUCTURES SHALL BE KEPT FREE OF DEBRIS AND DIRT DURING THE COURSE OF CONSTRUCTION, CONTRACTOR SHALL BE RESPONSIBLE FOR ANY DAMAGE CAUSED BY ANY STORM SEWER BACKUPS.
- EXISTING UTILITY STRUCTURES LOCATED WITHIN THE PROJECT LIMITS SHALL HAVE RIMS VERIFIED AND ADJUSTED TO FINAL GRADE OF THE SURROUNDING AREA.
- ACCESS MUST BE MAINTAINED TO ALL EXISTING PROPERTIES DURING CONSTRUCTION PER ARTICLE 107.09 UNLESS ARRANGEMENTS ARE MADE IN WRITING BY THE CONTRACTOR WITH THE PROPERTY OWNERS WITH A COPY TO THE ENGINEER FOR SHORT-TERM CLOSURES.
- ALL WORK IS SUBJECT TO INSPECTION BY THE ENGINEER IN CONJUNCTION WITH THE CITY OF WASHINGTON AS CONSTRUCTION PROGRESSES.
- FINAL ACCEPTANCE BY THE ILLINOIS DEPARTMENT OF TRANSPORTATION AND THE CITY OF WASHINGTON FOR THE IMPROVEMENTS IS BASED ON THE CONDITION OF THE IMPROVEMENTS AT THE TIME THE FINAL INSPECTION IS MADE.

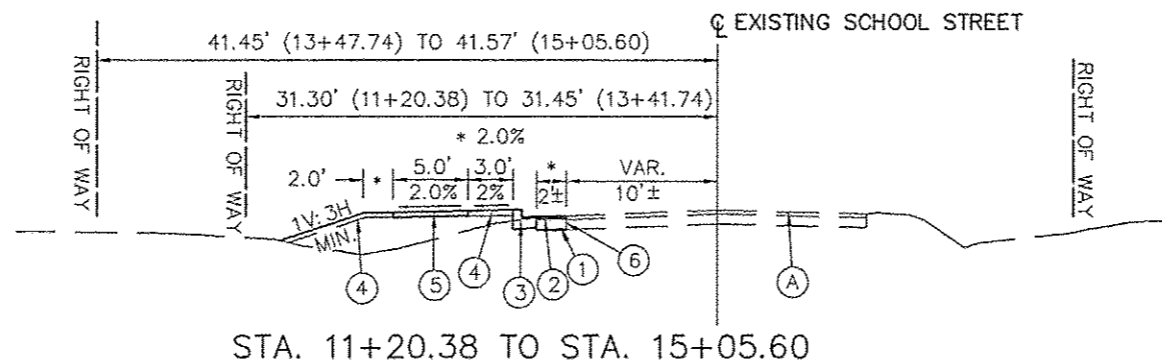
**BITUMINOUS MIX REQUIREMENTS**

LOCATION (S) AND MIXTURE USE (S):	HOT-MIX ASPHALT SURFACE COURSE
AC/PG:	PG 58-22
RAP % : (MAX) **	15%
DESIGN AIR VOIDS:	3.0% @ N = 50
MIXTURE COMPOSITION: (GRADATION MIXTURE)	IL 9.5 or IL 12.5
FRICTION AGGREGATE:	MIXTURE C

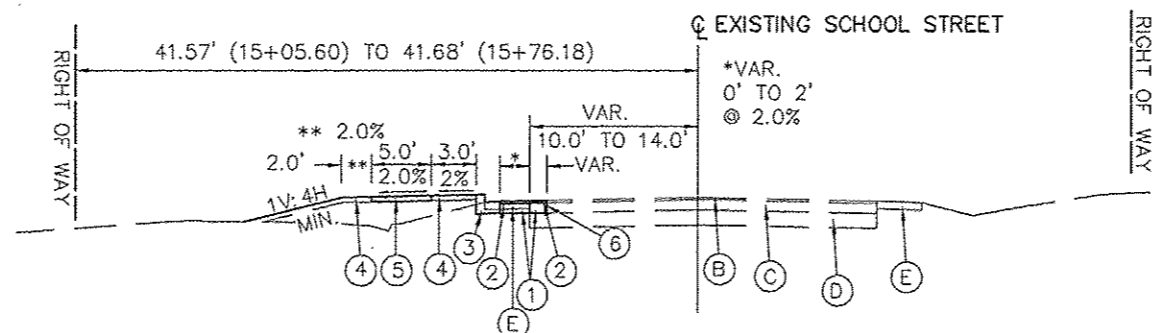
\*\* IF RAP OPTION IS SELECTED, THE ASPHALT CEMENT GRADE MAY NEED TO BE ADJUSTED, THIS WILL BE DETERMINED BY THE MATERIALS ENGINEER.

**APPLICATION RATES**

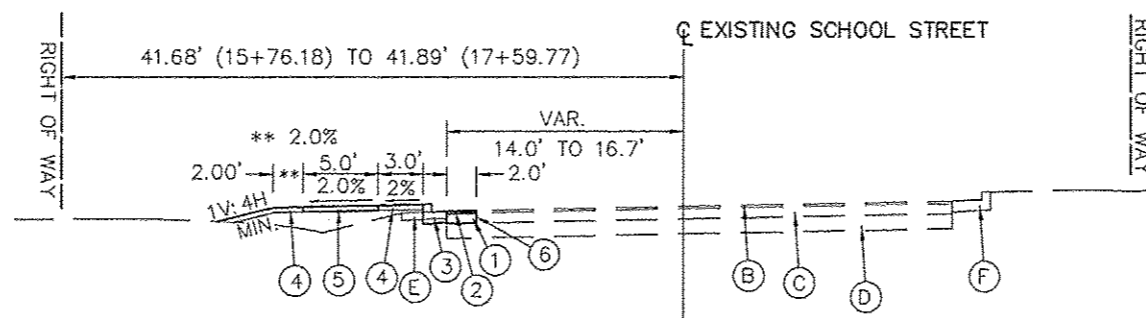
FOR SURFACE COURSE USE 112 LB / SQ. YD. / INCH  
FOR BITUMINOUS MATERIALS (PRIME COAT)  
CONCRETE BASE COURSE - 0.10 GAL. / SQ. YD.  
AGGGREGATE BASWE COURSE - 0.25 GAL. / SQ. YD.



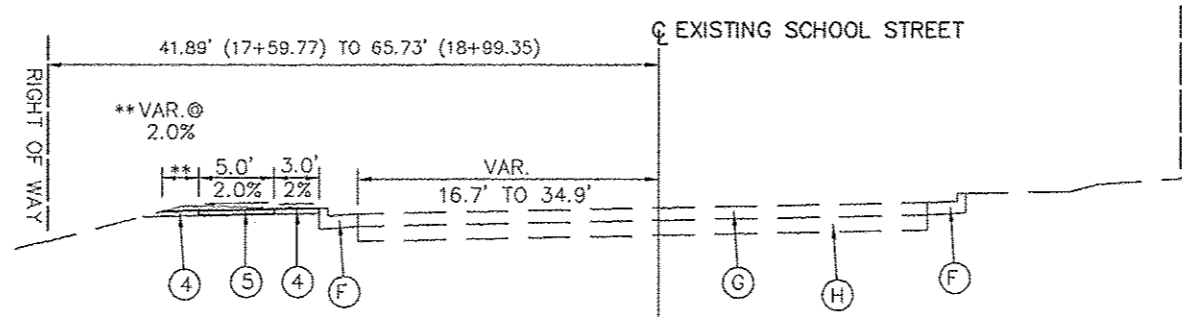
STA. 11+20.38 TO STA. 15+05.60



STA. 15+05.60 TO STA. 15+76.18



STA. 15+76.18 TO STA. 17+65.86



STA. 18+21.71 TO STA. 18+99.35

**LEGEND**

- (A) EXISTING SCHOOL STREET
- (B) EXISTING HMA SURFACE COURSE, 2"
- (C) EXISTING PCC BASE COURSE WIDENING, 7"±
- (D) EXISTING SUB-BASE GRANULAR MATERIAL, 12"
- (E) EXISTING AGGREGATE SHOULDER, 6"
- (F) EXISTING COMBINATION CONCRETE CURB & GUTTER, TYPE B-6.24
- (G) EXISTING P.C.C. PAVEMENT 10" (JOINTED)
- (H) EXISTING SUB-BASE GRANULAR MATERIAL, 12"
- (I) P.C.C. BASE COURSE WIDENING, 8"  
(THE PROPOSED PCC BASE COURSE WIDENING TO EXISTING PCC WIDENING USING No. 6x24 TIE BARS @ 24" CENTERS WHERE APPLICABLE. COST TO BE INCIDENTAL TO THE CONTRACT PAY ITEM "P.C.C. BASE COURSE WIDENING, 8")
- (2) HOT-MIX ASPHALT SURFACE COURSE, 2"
- (3) COMBINATION CONCRETE CURB & GUTTER, TYPE B-6.12
- (4) SEEDING WITH TOPSOIL, 4"
- (5) PORTLAND CEMENT CONCRETE SIDEWALK, 4"
- (6) SAW EXISTING PAVEMENT - FULL DEPTH

TYPICAL SECTIONS & GENERAL NOTES BEVERLY MANOR SCHOOL SIDEWALK		AUSTIN ENGINEERING, CO., INC. Consulting Engineers / Surveyors 2100 North University Street Peoria, Illinois 61614-1879 License No. 184-001143	
FOR: CITY OF WASHINGTON	DATE: 12/19/13	REVISION:	NO. 12-009
		REVISION:	SHEET NO. 2 OF 23



ROUTE NO.	SECTION	COUNTY	TOTAL SHEETS	THIS SHEET
LOCAL STREET	*	TAZEWELL	23	4

FED. RD. DIST. NO. 7 ILLINOIS PROJECT  
 12-00112-00-SW  
 CONTRACT NO. 89623

## UTILITY STATUS

ROADWAY	LOCATION	OFFSET	LEFT OR RIGHT	OWNER	TYPE OF UTILITY	TYPE OF CONFLICT	DISPOSITION
SCHOOL ST.	11+91.5	21.5'	LEFT	AMEREN	POWER POLE	SIDEWALK	RELOCATE
SCHOOL ST.	12+24.0	21.5'	LEFT	C.O.W.	WATER VALVE	DRIVEWAY	ADJUST
SCHOOL ST.	13+61.5	35.5'	LEFT	FRONTIER	PEDESTAL	EARTHWORK	ADJUST
SCHOOL ST.	13+84.5	33.5'	LEFT	C.O.W.	SAN. CLEANOUT	EARTHWORK	ADJUST
SCHOOL ST.	14+27.5	31.5'	LEFT	C.O.W.	CURB STOP	EARTHWORK	ADJUST
SCHOOL ST.	14+28.5	32.0'	LEFT	C.O.W.	CURB STOP	EARTHWORK	ADJUST
SCHOOL ST.	14+29.5	31.5'	LEFT	C.O.W.	CURB STOP	EARTHWORK	ADJUST
SCHOOL ST.	14+49.0	33.5'	LEFT	AMEREN	POWER POLE	EARTHWORK	RELOCATE
SCHOOL ST.	14+55.0	15.5'	LEFT	C.O.W.	SCHOOL SIGNAL	SIDEWALK	RELOCATE *
SCHOOL ST.	15+44.0	34.0'	LEFT	C.O.W.	CURB STOP	EARTHWORK	ADJUST
SCHOOL ST.	15+46.5	35.0'	LEFT	AMEREN	POWER POLE	EARTHWORK	RELOCATE
SCHOOL ST.	16+24.5	35.0'	LEFT	FRONTIER	PEDESTAL	EARTHWORK	RELOCATE
SCHOOL ST.	16+25.0	36.0'	LEFT	AMEREN	POWER POLE	EARTHWORK	RELOCATE
SCHOOL ST.	16+27.0	26.0'	LEFT	AMEREN	GAS VALVE	EARTHWORK	ADJUST
SCHOOL ST.	16+66.0	35.0'	LEFT	C.O.W.	CURB STOP	EARTHWORK	ADJUST
SCHOOL ST.	16+70.0	23.0'	LEFT	C.O.W.	FIRE HYDRANT	SIDEWALK	RELOCATE
SCHOOL ST.	16+87.0	29.5'	LEFT	C.O.W.	CURB STOP	EARTHWORK	ADJUST
SCHOOL ST.	16+89.0	29.5'	LEFT	C.O.W.	CURB STOP	EARTHWORK	ADJUST
SCHOOL ST.	16+91.0	29.5'	LEFT	C.O.W.	CURB STOP	EARTHWORK	ADJUST
SCHOOL ST.	16+98.5	37.0'	LEFT	AMEREN	POWER POLE	EARTHWORK	RELOCATE

C.O.W. = CITY OF WASHINGTON

\* CONTRACT ITEM

STATUS OF UTILITIES BEVERLY MANOR SCHOOL SIDEWALK		AUSTIN ENGINEERING CO., INC. CIVIL ENGINEERS	
FOR: CITY OF WASHINGTON		PEORIA LICENSE No. 184-001143	ILLINOIS
DATE 12/19/13	BY: [Signature]	PROJECT NO. 12-009	SHEET NO. 4 OF 23

ROUTE NO.	SECTION	COUNTY	TOTAL SHEETS	THIS SHEET
LOCAL STREET	*	TAZEWELL	23	5
FED. RD. DIST. NO. 7 ILLINOIS PROJECT				
12-00112-00-SW				
CONTRACT NO. 89623				

**SEEDING SCHEDULE**

LOCATION	(25000100) SEEDING CLASS 1 (ACRE)	(25000400) NITROGEN FERTILIZER NUTRIENT (LB)**	(25000500) PHOSPHOROUS FERTILIZER NUTRIENT (LB)**	(25000600) POTASSIUM FERTILIZER NUTRIENT (LB)**	(25100115) MULCH METHOD 2 (ACRE)***
LT. STA. 11+20.38 TO LT. STA. 18+99.35	0.30	27.0	27.0	27.0	0.30
<b>PROJECT TOTAL</b>	0.30 ACRE	27.0 LB.	27.0 LB.	27.0 LB.	0.30 ACRE

\*\* FERTILIZER TO BE APPLIED AT 270 LBS. PER ACRE AT 1-1-1 RATIO  
 \*\*\* PROCEDURE 1 TO BE APPLIED AT 2 TONS PER ACRE

**EARTHWORK SUMMARY (FOR INFORMATION ONLY)**

EARTH EXCAVATION	94 C.Y.*
EARTH EXCAVATION (20200100)	SUB-TOTAL 94 C.Y.
EMBANKMENT	547 C.Y.**
WASTE	SUB-TOTAL (453) C.Y.
WASTE FROM STORM SEWER TRENCH	149 C.Y.***
FURNISHED EXCAVATION (20400800)	TOTAL (304) C.Y.

\* EARTH EXCAVATION QUANTITIES FROM CROSS SECTIONS DO NOT INCLUDE AREAS OF EXISTING BITUMINOUS AND CONCRETE DRIVEWAYS. THE EXISTING DRIVEWAY AND CURB & GUTTER REMOVAL ARE PAID FOR UNDER A SEPARATE PAY ITEM  
 \*\* INCLUDES 15% SHRINKAGE FACTOR.  
 \*\*\* BASED ON PAY WIDTH FOR TRENCH BACKFILL AS DETAILED IN THE PLANS FOR STORM SEWER ITEMS.

**PAVING SCHEDULE**

LOCATION	PAVING AREA (SQ.YD.)	(35400300) PORTLAND CEMENT CONCRETE BASE COURSE WIDENING, 8" (SQ.YD.)	(40600100) BITUMINOUS MATERIALS (PRIME COAT) (GALLON)	(40603310) * HOT-MIX ASPHALT SURF. CSE. MIX "C", N50 (TON)
LT. STA. 10+55.24 TO LT. STA. 11+17.76	33	0	8 (1)	8
LT. STA. 11+17.76 TO LT. STA. 12+40.06	35	35	3.5 (2)	4
LT. STA. 12+46.05 TO LT. STA. 15+05.60	76	76	7.5 (2)	9
LT. STA. 15+05.60 TO LT. STA. 17+65.86	60	60	6 (2)	7
<b>PROJECT TOTAL</b>	204 SQ.YD.	171 SQ.YD.	25 GAL.	28 TON

(1) PRIME ESTIMATED @ 0.25 GAL./SQ.YD. ON AGGREGATE BASE  
 (2) PRIME ESTIMATED @ 0.10 GAL./SQ.YD. ON CONCRETE BASE COURSE WIDENING  
 \* HMA BITUMINOUS SURFACE ESTIMATED AT 112 POUNDS/SQ.YD./IN. THICKNESS

**60603800 COMBINATION CONCRETE CURB & GUTTER, TYPE B-6.12**

LOCATION	QUANTITY
LT. STA. 11+19.64 TO LT. STA. 17+65.86	599 FT.
<b>PROJECT TOTAL</b>	599 FT.

CURB & GUTTER QUANTITY INCLUDES:  
 1) DEDUCTION THROUGH INLETS (5 @ 10' EACH)  
 2) INCLUDES TRANSITION CURB & GUTTER  
 LT. STA. 17+45.86 TO LT. STA. 17+65.86

**42300300 PORTLAND CEMENT CONCRETE DRIVEWAY PAVEMENT, 7 INCH**

LOCATION	QUANTITY
LT. STA. 11+39.63 TO LT. STA. 11+79.55	33 SQ.YD.
LT. STA. 11+93.67 TO LT. STA. 12+35.80	35
LT. STA. 13+05.21 TO LT. STA. 13+39.56	28
LT. STA. 14+61.16 TO LT. STA. 15+06.61	38
LT. STA. 15+81.67 TO LT. STA. 16+24.97	36
LT. STA. 11+50.62 TO LT. STA. 11+68.55	19
LT. STA. 12+04.66 TO LT. STA. 12+24.79	22
LT. STA. 13+16.20 TO LT. STA. 13+28.55	14
LT. STA. 14+72.16 TO LT. STA. 14+95.61	26
LT. STA. 15+92.89 TO LT. STA. 16+14.21	45
<b>PROJECT TOTAL</b>	296 SQ.YD.

**42400100 PORTLAND CEMENT CONCRETE SIDEWALK 4 INCH**

LOCATION	QUANTITY
LT. STA. 11+20.38 TO LT. STA. 11+39.63	109 SQ.FT.
LT. STA. 11+79.55 TO LT. STA. 11+93.67	71
LT. STA. 12+35.80 TO LT. STA. 13+05.21	347
LT. STA. 13+39.56 TO LT. STA. 14+61.16	608
LT. STA. 15+06.61 TO LT. STA. 15+81.67	376
LT. STA. 16+24.97 TO LT. STA. 17+65.71	698
LT. STA. 18+21.71 TO LT. STA. 18+99.35	440
<b>PROJECT TOTAL</b>	2,649 SQ.FT.

**PROPOSED EDGE OF PAVEMENT AND TOP OF CURB GRADES**

STATION	EDGE OF PAVEMENT	TOP OF CURB
11+39.63	747.86	747.30
DRIVE APPROACH	---	---
11+79.55	746.61	747.05
11+93.66	746.52	746.96
DRIVE APPROACH	---	---
12+43.05 (INLET)	746.32	746.76
12+50.00	746.35	746.79
12+75.00	746.44	746.88
13+00.00	746.54	746.98
13+05.20	746.56	747.00
DRIVE APPROACH	---	---
13+39.55	746.69	747.13
13+51.75 (INLET)	746.73	747.17
13+75.58 (INLET)	746.82	747.26
14+00.00	746.98	747.42
14+25.00	747.14	747.58
14+25.00	747.30	747.74
14+61.16	747.37	747.81
DRIVE APPROACH	---	---
15+06.61	747.89	748.33
15+13.00 (INLET)	747.94	748.38
15+25.00	748.05	748.49
15+50.00	748.29	748.73
15+75.00	748.66	749.10
15+81.81	748.78	749.22
DRIVE APPROACH	---	---
16+25.12	749.48	749.92
16+31.57 (INLET)	749.56	750.00
16+50.00	749.82	750.26
16+75.00	750.03	750.47
17+00.00	750.21	750.65
17+25.00	750.48	750.92
17+50.00	750.75	751.19

**QUANTITIES NOT OTHERWISE SHOWN**

67100100	MOBILIZATION	1 L.SUM
X7010216	TRAFFIC CONTROL AND PROTECTION (SPECIAL)	1 L.SUM
	EXISTING SCHOOL SPEED LIMIT FLASHER RELOCATION	1 L.SUM

**STORM SEWER STRUCTURE SCHEDULE**

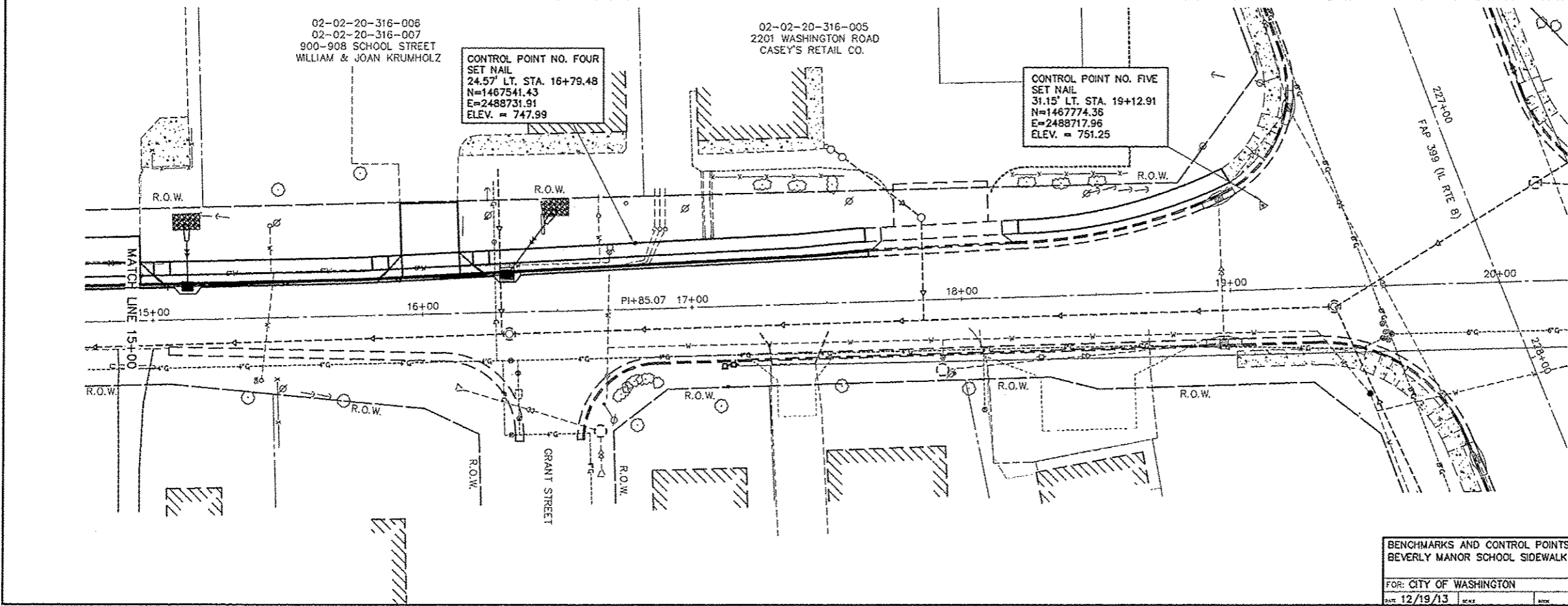
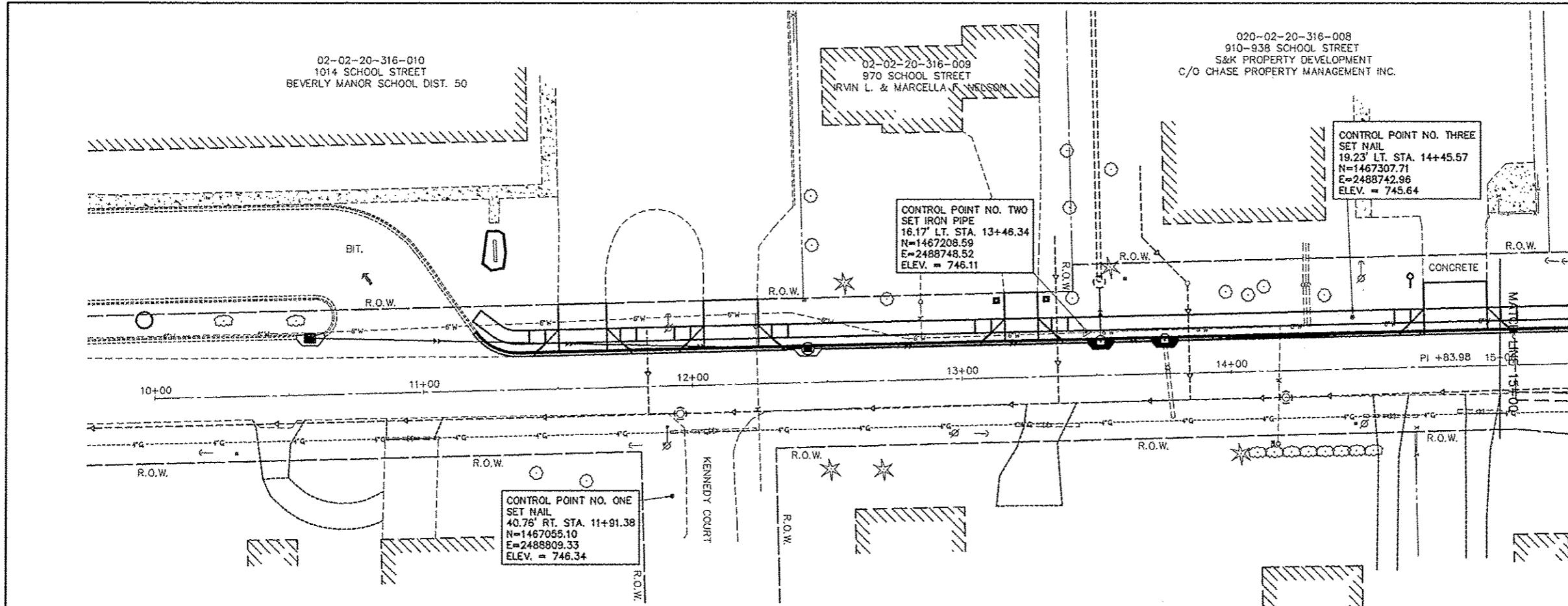
STRUCTURE NUMBER	STATION	X6021814 INLET MANHOLE, TY G-1, 4' DIA.	X6020082 INLETS, TYPE G-1	54213657 PRECAST REINFORCED CONCRETE FLARED END SECTION, 12"	60257900 MANHOLES TO BE RECONSTRUCTED
EX.	49.43' LT. STA. 13+52.72				X
1	12.48' LT. STA. 13+51.75	X			
2	12.59' LT. STA. 12+43.05	X			
3	21.04' LT. STA. 10+58.24		X		
4	12.46' LT. STA. 13+75.58	X			
5	12.35' LT. STA. 15+13.00	X			
6	35.3' LT. STA. 15+13.00			X	
7	13.93' LT. STA. 16+31.57		X		
8	37.4' LT. STA. 16+50.00			X	
<b>TOTAL</b>		4	2	2	1

**STORM SEWER PIPE SCHEDULE**

FROM STRUCTURE	INVERT ELEVATION	TO STRUCTURE	INVERT ELEVATION	PIPE SLOPE %	550A0340 STORM SEWERS, CLASS A, TYPE 2, 12" (FT.)	550A0360 STORM SEWERS, CLASS A, TYPE 2, 15" (FT.)	550A0380 STORM SEWERS, CLASS A, TYPE 2, 18" (FT.)	20800150 TRENCH BACKFILL (C.Y.)
EX. STRUCT	738.82	1	738.75	2.75			34	14
1	741.79	2	742.85	1.00		106		27
2	742.95	3	744.77	1.00	182			28
1	741.60	4	741.97	1.75		21		8
4	742.07	5	744.37	1.70		135		35
5	744.47	6	745.20	3.25	16			3
5	744.47	7	746.46	1.70	117			30
7	746.58	8	747.10	1.80	23			4
<b>TOTAL</b>					338	262	34	149

ROUTE NO.	SECTION	COUNTY	TOTAL SHEETS	THIS SHEET
LOCAL STREET	*	TAZEWELL	23	6

FED. RD. DIST. NO. 7 ILLINOIS PROJECT  
 12-00112-00-SW  
 CONTRACT NO. 89623



02-02-20-316-010  
 1014 SCHOOL STREET  
 BEVERLY MANOR SCHOOL DIST. 50

02-02-20-316-009  
 970 SCHOOL STREET  
 IRVIN L. & MARCELLA WILSON

020-02-20-316-008  
 910-938 SCHOOL STREET  
 S&K PROPERTY DEVELOPMENT  
 C/O CHASE PROPERTY MANAGEMENT INC.

CONTROL POINT NO. THREE  
 SET NAIL  
 19.23' LT. STA. 14+45.57  
 N=1467307.71  
 E=2488742.96  
 ELEV. = 745.64

CONTROL POINT NO. TWO  
 SET IRON PIPE  
 16.17' LT. STA. 13+46.34  
 N=1467208.59  
 E=2488748.52  
 ELEV. = 746.11

CONTROL POINT NO. ONE  
 SET NAIL  
 40.76' RT. STA. 11+91.38  
 N=1467055.10  
 E=2488809.33  
 ELEV. = 746.34

CONTROL POINT NO. FOUR  
 SET NAIL  
 24.57' LT. STA. 16+79.48  
 N=1467541.43  
 E=2488731.91  
 ELEV. = 747.99

CONTROL POINT NO. FIVE  
 SET NAIL  
 31.15' LT. STA. 19+12.91  
 N=1467774.36  
 E=2488717.96  
 ELEV. = 751.25

02-02-20-316-006  
 02-02-20-316-007  
 900-908 SCHOOL STREET  
 WILLIAM & JOAN KRUMHOLZ

02-02-20-316-005  
 2201 WASHINGTON ROAD  
 CASEY'S RETAIL CO.

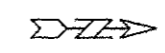
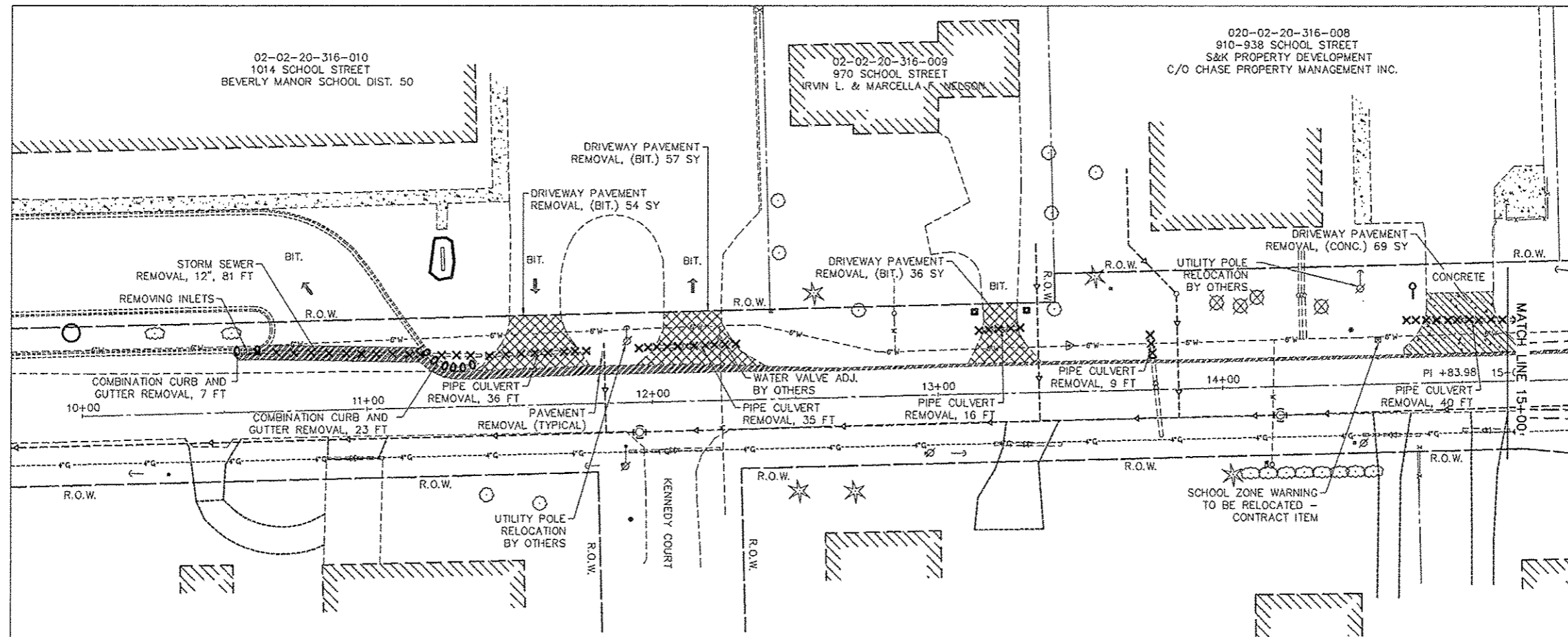
BENCHMARKS AND CONTROL POINTS  
 BEVERLY MANOR SCHOOL SIDEWALK  
 FOR: CITY OF WASHINGTON  
 DATE 12/19/13

AUSTIN ENGINEERING CO., INC.  
 CIVIL ENGINEERS  
 PEORIA ILLINOIS  
 LICENSE No. 104-001142  
 SHEET NO. 6 OF 23


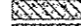






ROUTE NO	SECTION	COUNTY	TOTAL SHEETS	THIS SHEET
LOCAL STREET	*	TAZEWELL	23	8

FED. RD. DIST. NO. 7 ILLINOIS PROJECT  
 12-00112-00-SW  
 CONTRACT NO. 89623



LEGEND

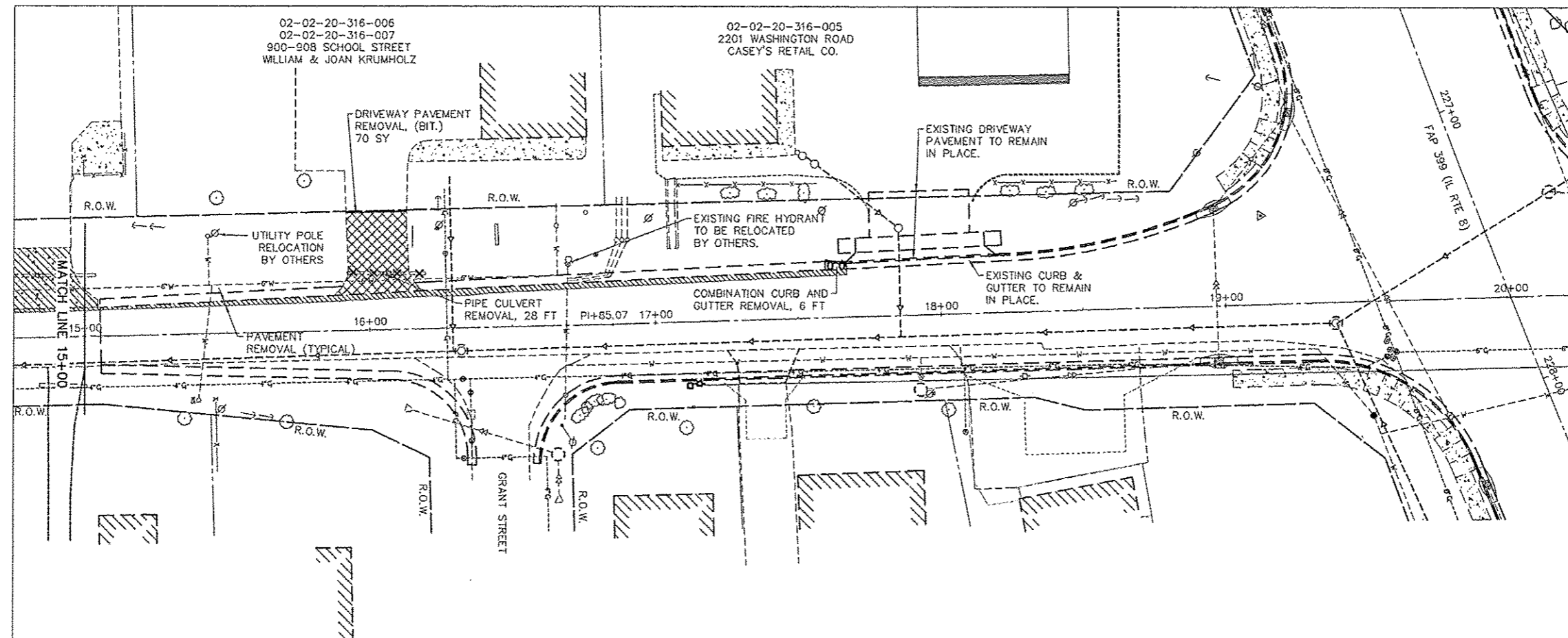
-  DRIVEWAY PAVEMENT REMOVAL - BITUMINOUS
-  DRIVEWAY PAVEMENT REMOVAL - CONCRETE
-  BITUMINOUS PAVEMENT REMOVAL
-  CULVERT OR STORM SEWER REMOVAL
-  COMB. CURB AND GUTTER REMOVAL
-  TREE REMOVAL

REMOVAL PLAN 10+00 TO 15+00 BEVERLY MANOR SCHOOL SIDEWALK		AUSTIN ENGINEERING CO., INC. CIVIL ENGINEERS	
FOR: CITY OF WASHINGTON	DESIGNED BY	ILLINOIS LICENSE NO. 104-001143	PROJECT NO. 20-12-009
DATE 12/19/13	SCALE	BOOK	SHEET NO. 8 OF 23



ROUTE NO	SECTION	COUNTY	TOTAL SHEETS	THIS SHEET
LOCAL STREET	*	TAZEWELL	23	9

FED. RD. DIST. NO. 7 ILLINOIS PROJECT  
12-00112-00-SW  
CONTRACT NO. 89623



**44000100 PAVEMENT REMOVAL**

LOCATION	QUANTITY
LT. STA. 10+55.2 TO LT. STA. 11+17.8	33 SQ.YD.
LT. STA. 11+17.8 TO LT. STA. 12+40.1	40 SQ.YD.
LT. STA. 12+40.1 TO LT. STA. 15+05.6	31 SQ.YD.
LT. STA. 15+05.6 TO LT. STA. 17+65.9	54 SQ.YD.
<b>PROJECT TOTAL</b>	<b>158 SQ.YD.</b>

**44000200 DRIVEWAY PAVEMENT REMOVAL**

LOCATION	QUANTITY
LT. STA. 11+38.0 TO LT. STA. 11+78.4 (BIT.)	54 SQ.YD.
LT. STA. 11+91.5 TO LT. STA. 12+39.8 (BIT.)	57 SQ.YD.
LT. STA. 13+10.7 TO LT. STA. 13+36.4 (BIT.)	36 SQ.YD.
LT. STA. 14+63.9 TO LT. STA. 15+04.9 (CONC.)	69 SQ.YD.
LT. STA. 15+87.5 TO LT. STA. 16+18.3 (BIT.)	70 SQ.YD.
<b>PROJECT TOTAL</b>	<b>286 SQ.YD.</b>

**50105220 PIPE CULVERT REMOVAL**

LOCATION	QUANTITY
LT. STA. 11+42.0 TO LT. STA. 11+78.4	36 FT
LT. STA. 11+94.9 TO LT. STA. 12+30.2	35
LT. STA. 13+14.3 TO LT. STA. 13+30.0	16
LT. STA. 13+75.2	9
LT. STA. 14+64.2 TO LT. STA. 15+04.3	40
LT. STA. 15+92.5 TO LT. STA. 16+19.9	28
<b>PROJECT TOTAL</b>	<b>164 FT</b>

**55100500 STORM SEWER REMOVAL, 12"**

LOCATION	QUANTITY
LT. STA. 10+60.0 TO LT. STA. 11+41.0	81 FT
<b>PROJECT TOTAL</b>	<b>81 FT</b>

**60500060 REMOVING INLETS**

LOCATION	QUANTITY
LT. STA. 10+58.2	1 EA
<b>PROJECT TOTAL</b>	<b>1 EA</b>

**44000500 COMBINATION CURB & GUTTER REMOVAL**

LOCATION	QUANTITY
LT. STA. 10+53.2 TO LT. STA. 10+63.2	7 FT
LT. STA. 11+19.6 TO LT. STA. 11+38.7	23
LT. STA. 17+60.0 TO LT. STA. 17+65.9	6
<b>PROJECT TOTAL</b>	<b>36 FT</b>

**20100110 TREE REMOVAL (8 TO 15 UNITS DIAMETER)**


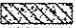

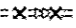
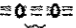

LOCATION	QUANTITY
31.4' LT. STA. 14+12.8	12 UNITS
<b>PROJECT TOTAL</b>	<b>12 UNITS</b>

**20100210 TREE REMOVAL (OVER 15 UNITS DIAMETER)**

LOCATION	QUANTITY
29.8' LT. STA. 13+98.6	36 UNITS
28.5' LT. STA. 14+06.9	24
27.6' LT. STA. 14+35.3	18
<b>PROJECT TOTAL</b>	<b>78 UNITS</b>



**LEGEND**

-  DRIVEWAY PAVEMENT REMOVAL - BITUMINOUS
-  DRIVEWAY PAVEMENT REMOVAL - CONCRETE
-  BITUMINOUS PAVEMENT REMOVAL
-  CULVERT OR STORM SEWER REMOVAL
-  COMB. CURB AND GUTTER REMOVAL
-  TREE REMOVAL

REMOVAL PLAN - 15+00 TO 20+00  
BEVERLY MANOR SCHOOL SIDEWALK

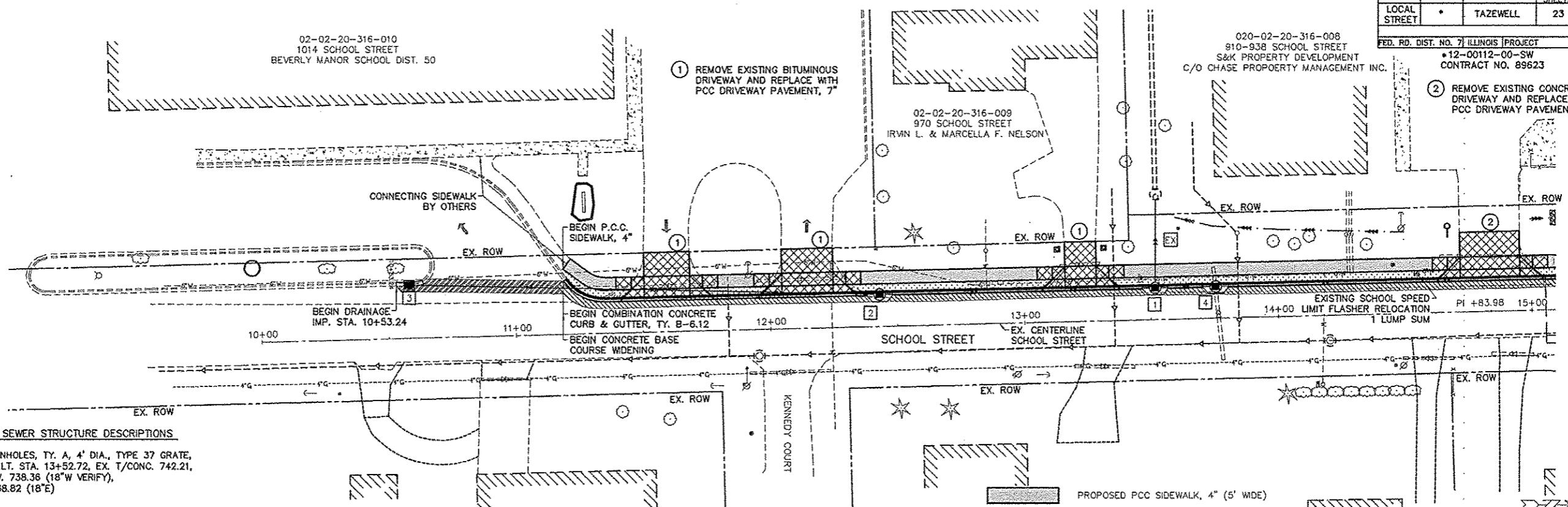
AUSTIN ENGINEERING CO., INC.  
CIVIL ENGINEERS

FOR: CITY OF WASHINGTON  
DATE: 12/19/13

PERIOD: 12/19/13  
PROJECT NO. 12-00112-00-SW  
SHEET NO. 9 OF 23

ROUTE NO	SECTION	COUNTY	TOTAL SHEETS	THIS SHEET
LOCAL STREET	*	TAZEWELL	23	10

FED. RD. DIST. NO. 7 ILLINOIS PROJECT  
 \*12-00112-00-SW  
 CONTRACT NO. 89623



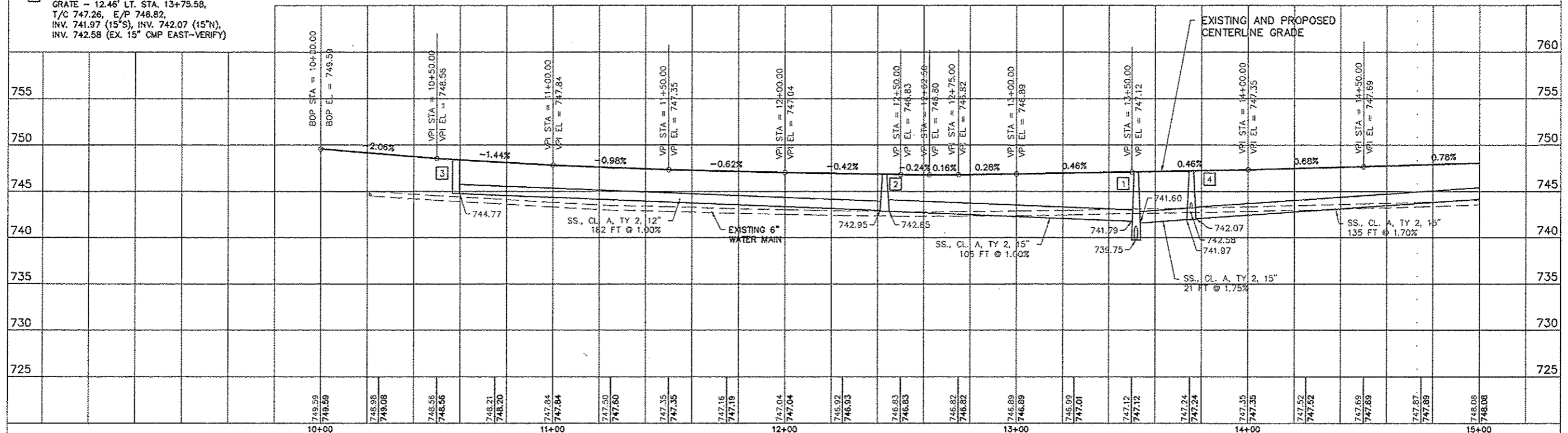
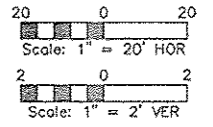
**STORM SEWER STRUCTURE DESCRIPTIONS**

- EX EX. MANHOLES, TY. A, 4' DIA., TYPE 37 GRATE, 49.43' LT. STA. 13+52.72, EX. T/CONC. 742.21, EX. INV. 738.36 (18"W VERIFY), INV. 738.82 (18"E)
- 1 INLET MANHOLE, TY. A, 4' DIA., TY. G-1 FRAME & GRATE - 12.48' LT. STA. 13+51.75, T/C 747.17, E/P 746.73, INV. 739.75 (18"W), INV. 741.60 (15"N), INV. 741.79 (15"S)
- 2 INLET MANHOLE, TY. A, 4' DIA., TY. G-1 FRAME & GRATE - 12.59' LT. STA. 12+43.05, T/C 746.76, E/P 746.32, INV. 742.85 (15"N), INV. 742.95 (12"S)
- 3 INLETS, TYPE G-1, 21.04' LT. STA. 10+58.24, T/C 748.27, E/P 747.83, INV. 744.77 (12"N)
- 4 INLET MANHOLE, TY. A, 4' DIA., TY. G-1 FRAME & GRATE - 12.46' LT. STA. 13+75.58, T/C 747.26, E/P 746.82, INV. 741.97 (15"S), INV. 742.07 (15"N), INV. 742.59 (EX. 15" CMP EAST-VERIFY)

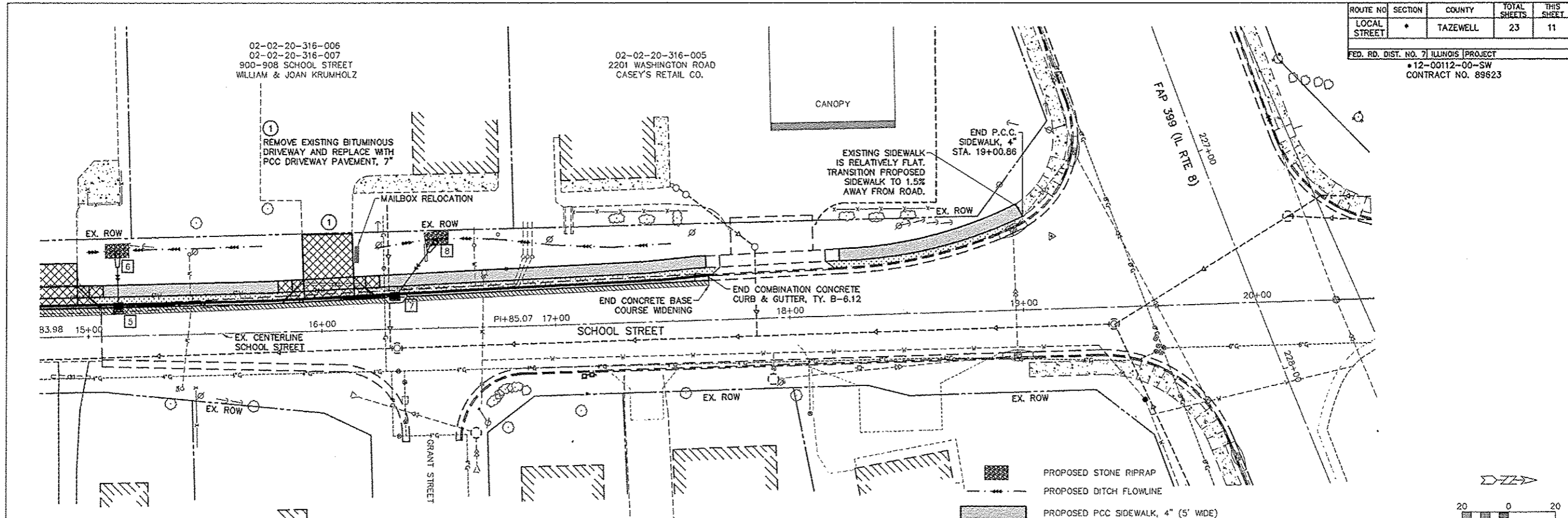
**STORM SEWER PIPE SCHEDULE**

- EX - 1 STORM SEWERS, CLASS A, TYPE 2, 18" 34 FT. @ 2.75%, T.B.(ST.S.) = 14 C.Y.
- 1 - 2 STORM SEWERS, CLASS A, TYPE 2, 15" 106 FT. @ 1.00%, T.B.(ST.S.) = 27 C.Y.
- 2 - 3 STORM SEWERS, CLASS A, TYPE 2, 12" 182 FT. @ 1.00%, T.B.(ST.S.) = 28 C.Y.
- 1 - 4 STORM SEWERS, CLASS A, TYPE 2, 15" 21 FT. @ 1.75%, T.B.(ST.S.) = 8 C.Y.

- PROPOSED PCC SIDEWALK, 4" (5' WIDE)
- PROPOSED GRASS BUFFER STRIP (3' WIDE)
- PROPOSED PCC DRIVEWAY PAVEMENT
- PROPOSED PAVEMENT WIDENING
- PROPOSED UTILITY PATCH
- PROPOSED DITCH FLOWLINE



ROUTE NO	SECTION	COUNTY	TOTAL SHEETS	THIS SHEET
LOCAL STREET	*	TAZEWELL	23	11
FED. RD. DIST. NO. 7 ILLINOIS PROJECT				
*12-00112-00-SW				
CONTRACT NO. 89623				



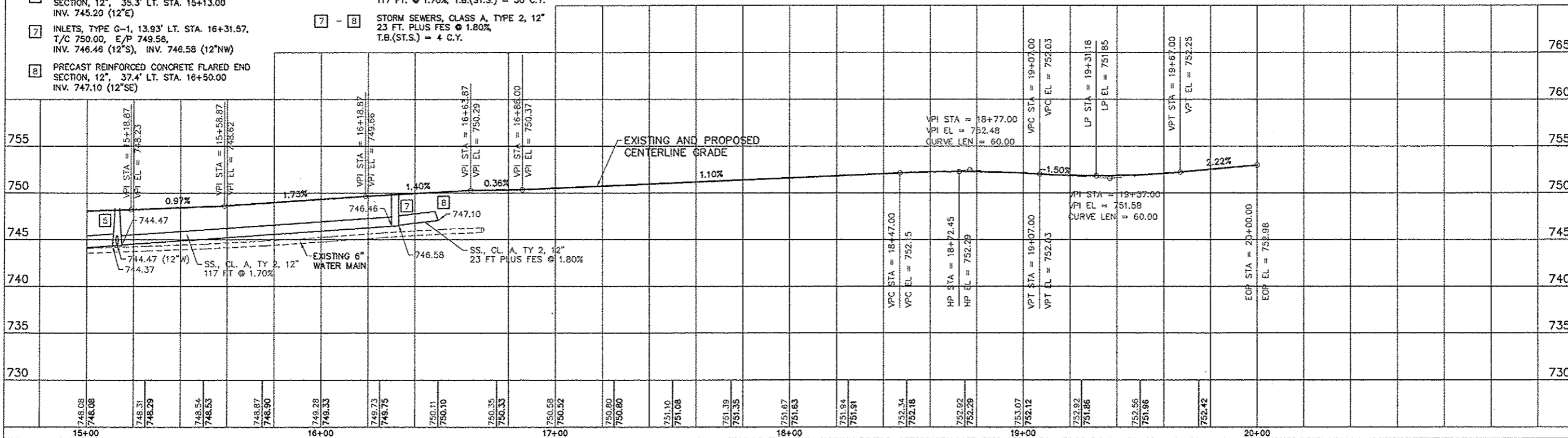
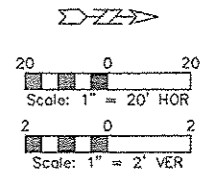
**STORM SEWER STRUCTURE DESCRIPTIONS**

- 5 INLET MANHOLE, TY. A, 4' DIA., TY. G-1 FRAME & GRATE - 12.35' LT. STA. 15+13.00, T/C 748.38, E/P 747.94, INV. 744.37 (15"S), INV. 744.47 (12"N), INV. 744.49 (12"W)
- 6 PRECAST REINFORCED CONCRETE FLARED END SECTION, 12", 35.3' LT. STA. 15+13.00 INV. 745.20 (12"E)
- 7 INLETS, TYPE G-1, 13.93' LT. STA. 16+31.57, T/C 750.00, E/P 749.58, INV. 746.46 (12"S), INV. 746.58 (12"NW)
- 8 PRECAST REINFORCED CONCRETE FLARED END SECTION, 12", 37.4' LT. STA. 16+50.00 INV. 747.10 (12"SE)

**STORM SEWER PIPE SCHEDULE**

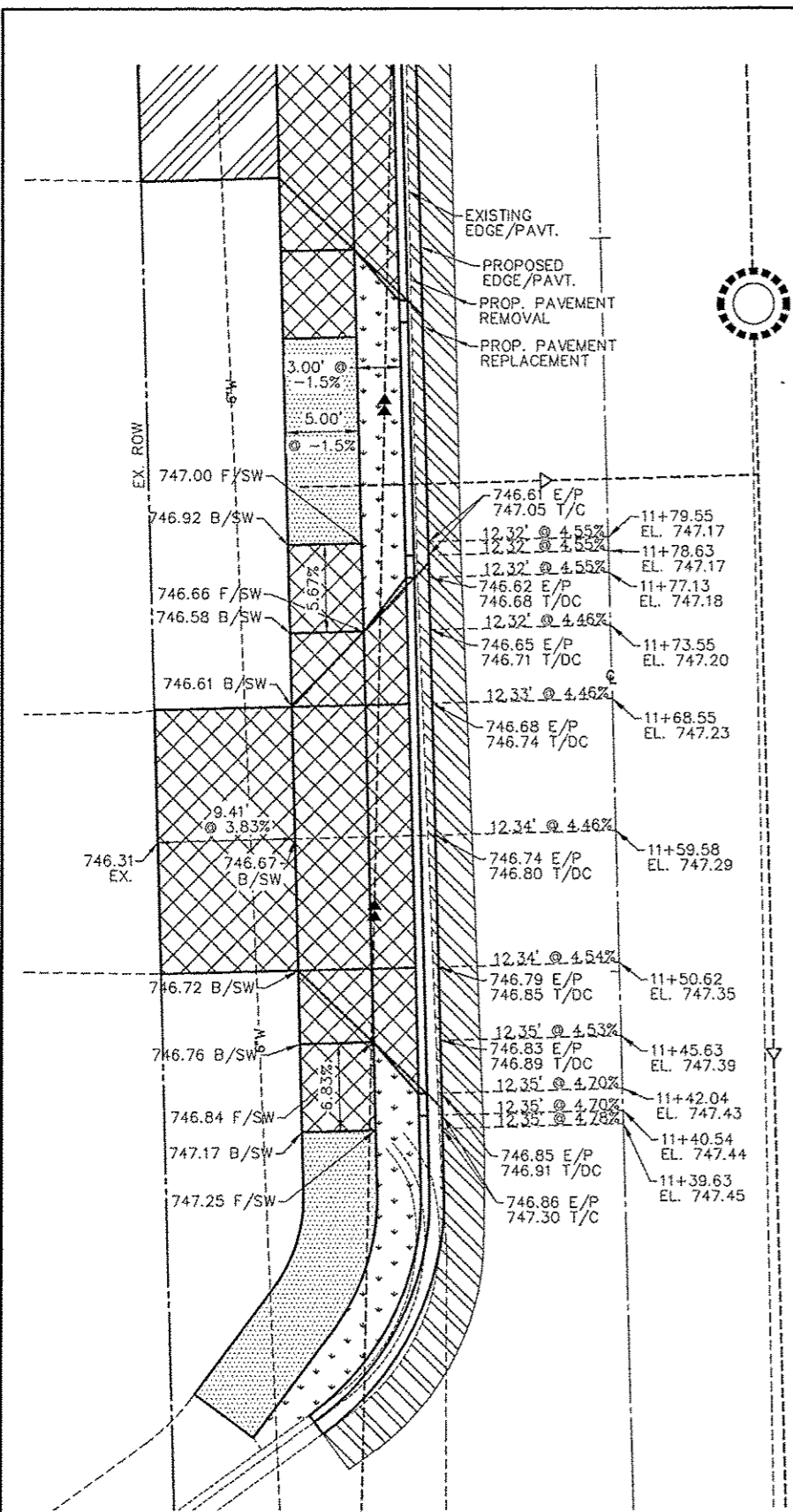
- 4 - 5 STORM SEWERS, CLASS A, TYPE 2, 15" 135 FT. @ 1.70%, T.B.(ST.S.) = 35 C.Y.
- 5 - 6 STORM SEWERS, CLASS A, TYPE 2, 12" 16 FT. PLUS FES @ 3.25%, T.B.(ST.S.) = 3 C.Y.
- 5 - 7 STORM SEWERS, CLASS A, TYPE 2, 12" 117 FT. @ 1.70%, T.B.(ST.S.) = 30 C.Y.
- 7 - 8 STORM SEWERS, CLASS A, TYPE 2, 12" 23 FT. PLUS FES @ 1.80%, T.B.(ST.S.) = 4 C.Y.

- PROPOSED STONE RIPRAP
- PROPOSED DITCH FLOWLINE
- PROPOSED PCC SIDEWALK, 4" (5' WIDE)
- PROPOSED GRASS BUFFER STRIP (3' WIDE)
- PROPOSED PCC DRIVEWAY PAVEMENT
- PROPOSED PAVEMENT WIDENING
- PROPOSED UTILITY PATCH

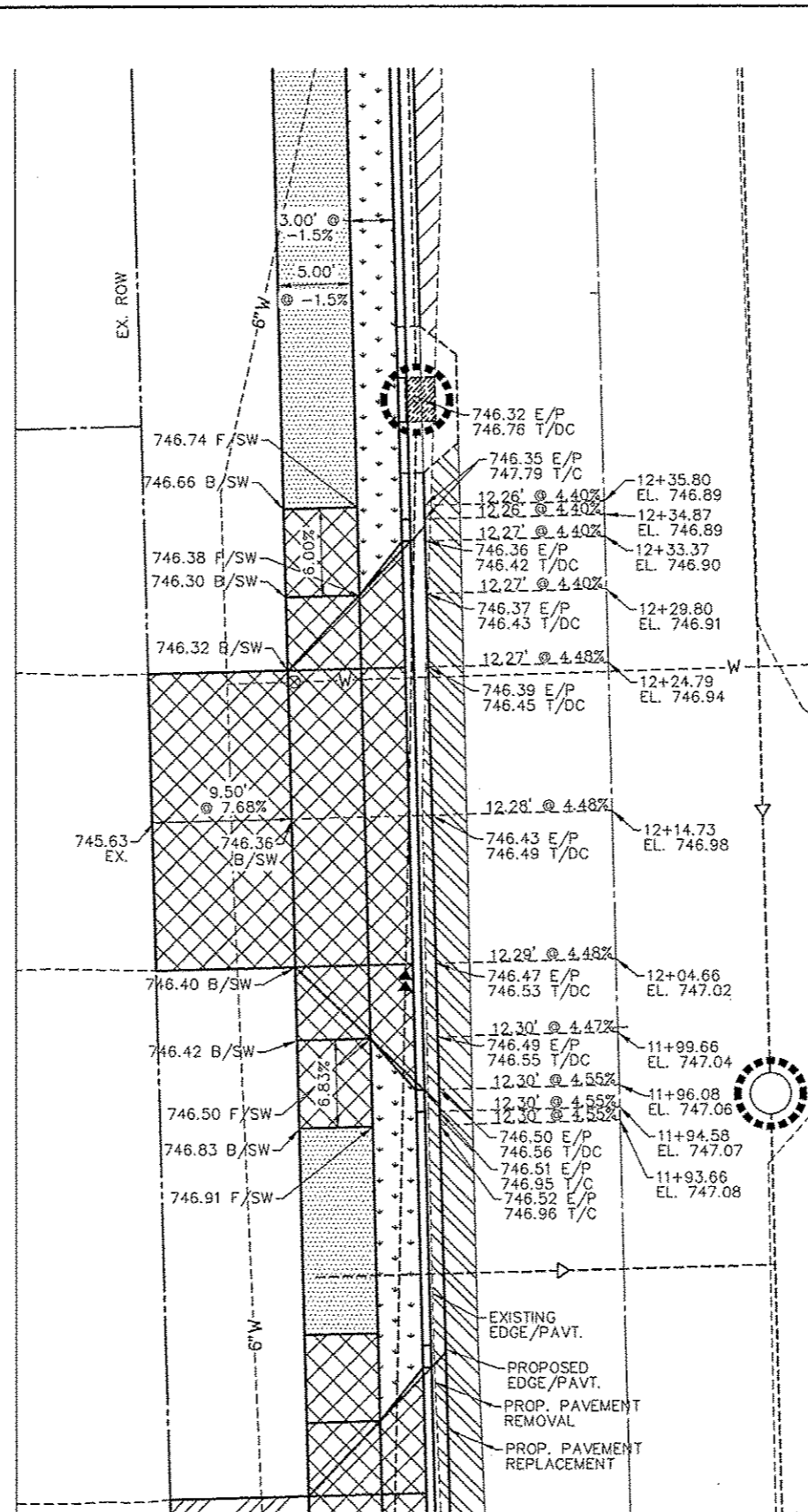


ROUTE NO	SECTION	COUNTY	TOTAL SHEETS	THIS SHEET
LOCAL STREET	*	TAZEWELL	23	12

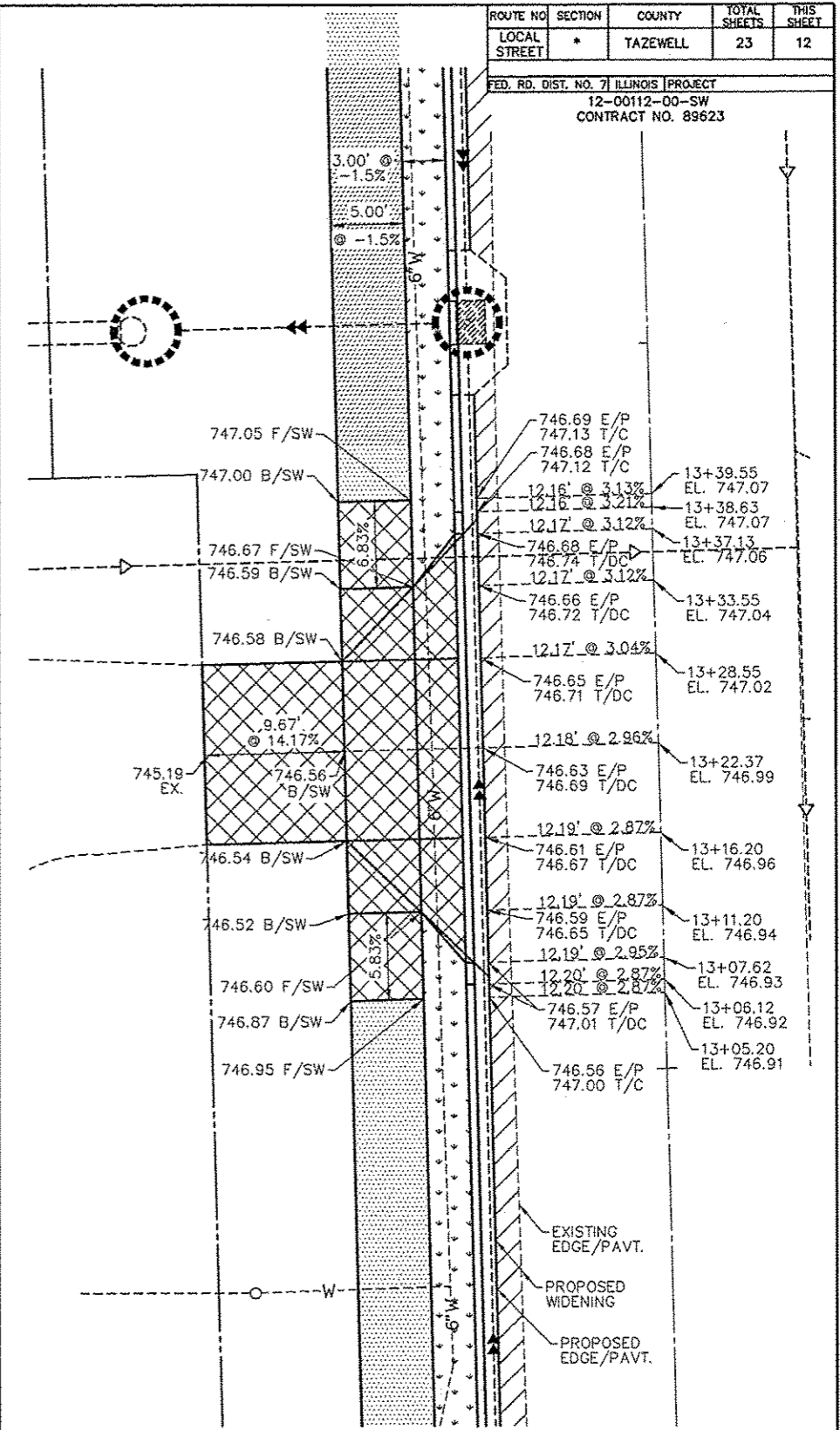
FED. RD. DIST. NO. 7 ILLINOIS PROJECT  
 12-00112-00-SW  
 CONTRACT NO. 89623




PROPOSED DRIVEWAY  
 CL STA. 11+59.58  
 1014 SCHOOL STREET  
 BEVERLY MANOR SCHOOL (SOUTH EXIT)



PROPOSED DRIVEWAY  
 CL STA. 12+14.73  
 1014 SCHOOL STREET  
 BEVERLY MANOR SCHOOL (NORTH ENTRANCE)

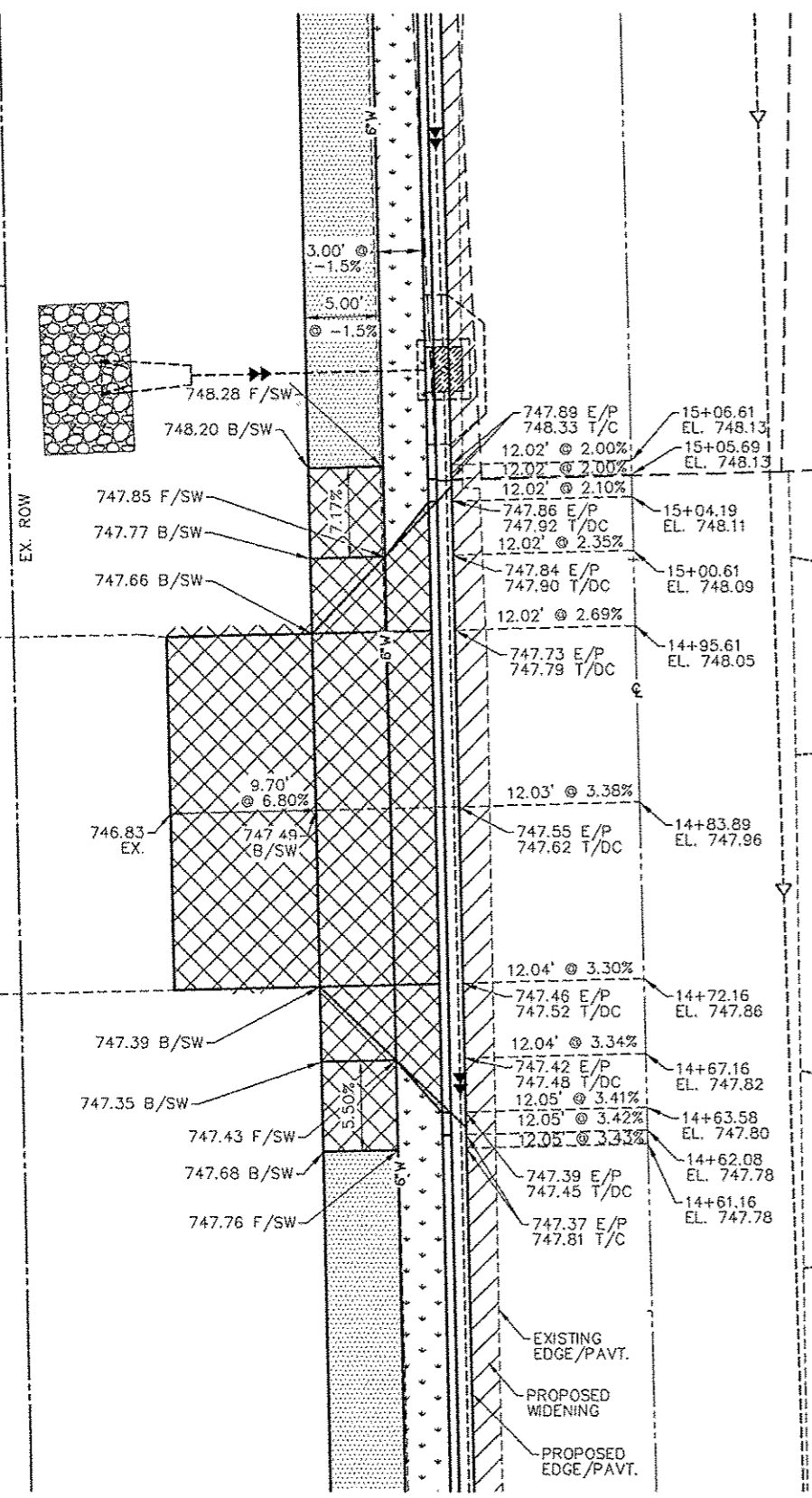


PROPOSED DRIVEWAY  
 CL STA. 13+22.37  
 1014 SCHOOL STREET

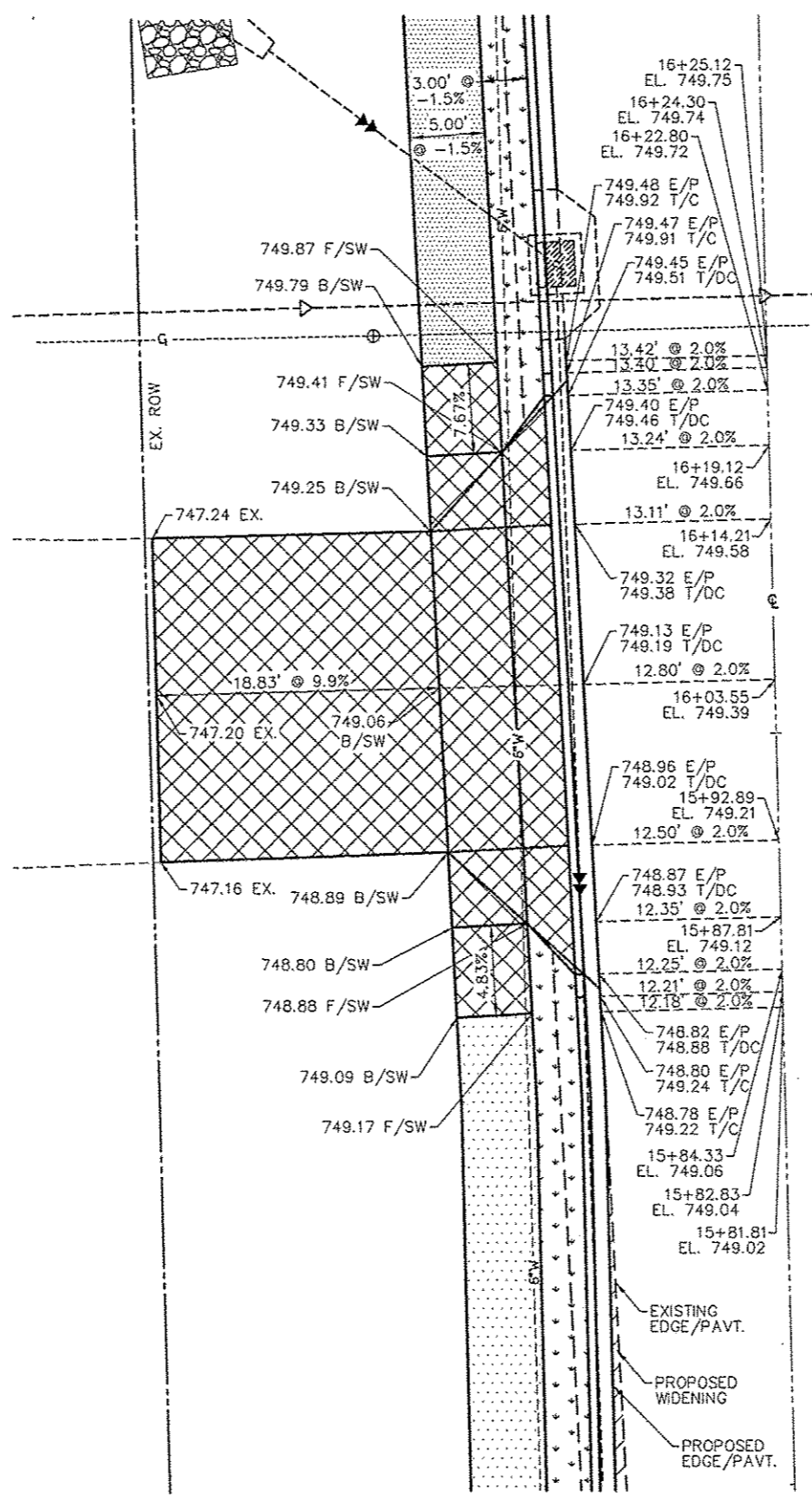
BEVERLY MANOR SCHOOL SIDEWALK ENTRANCE DETAILS		 <b>AUSTIN ENGINEERING CO., INC.</b> Consulting Engineers / Surveyors 8100 North University Street Peoria, Illinois 61615-1879 License No. 184-001143	DATE 02/25/13	PROJECT NO. 20-12-009
FOR: CITY OF WASHINGTON	SCALE 1" = 5'		SHEET NO. 12 OF 23	

ROUTE NO.	SECTION	COUNTY	TOTAL SHEETS	THIS SHEET
LOCAL STREET	*	TAZEWELL	23	13

FED. RD. DIST. NO. 7 ILLINOIS PROJECT  
 12-00112-00-SW  
 CONTRACT NO. 89623



PROPOSED DRIVEWAY  
 CL STA. 14+83.89  
 910-938 SCHOOL STREET



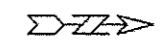
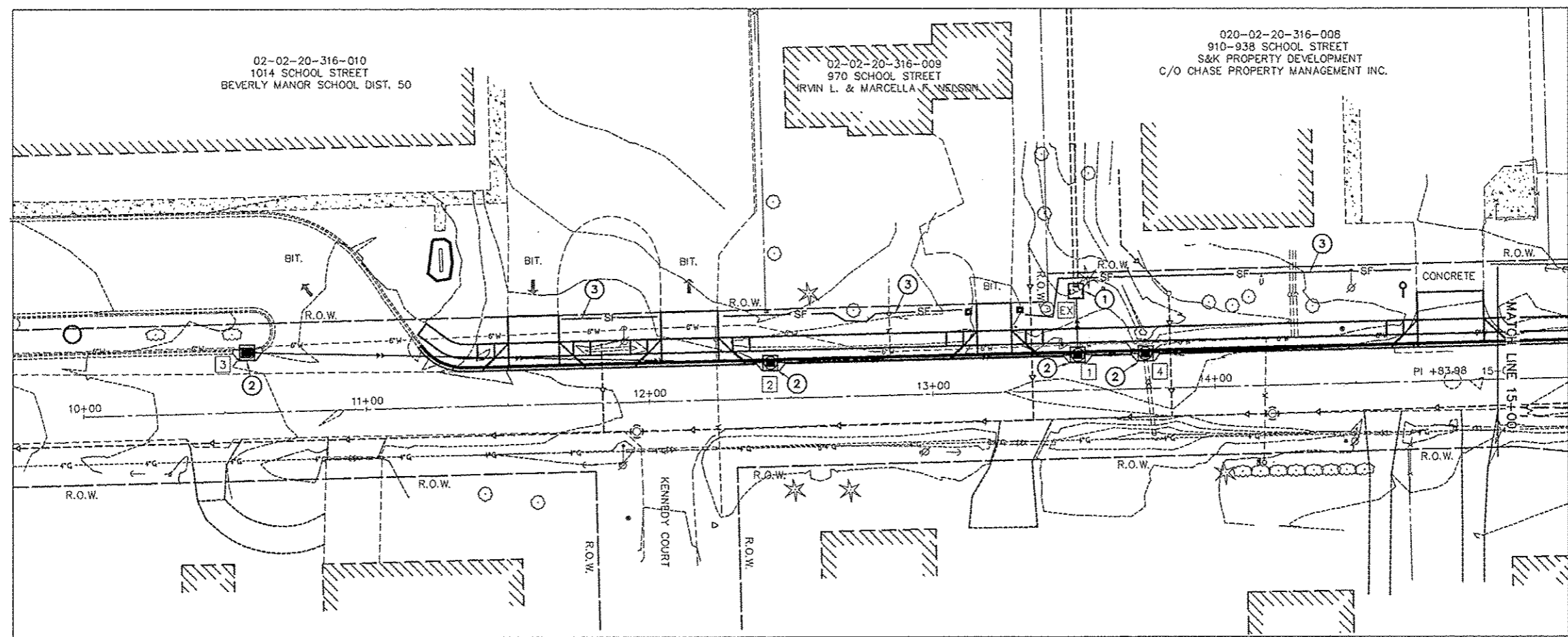
PROPOSED DRIVEWAY  
 CL STA. 16+03.55  
 900-908 SCHOOL STREET

- PROPOSED PCC SIDEWALK, 4" (5' WIDE)
- PROPOSED GRASS BUFFER STRIP (3' WIDE)
- PROPOSED PCC DRIVEWAY PAVEMENT
- PROPOSED PAVEMENT WIDENING

BEVERLY MANOR SCHOOL SIDEWALK ENTRANCE DETAILS			AUSTIN ENGINEERING, CO., INC. Consulting Engineers / Surveyors 8100 North University Street Peoria, Illinois 61615-1879 License No. 134-001143	
FOR: CITY OF WASHINGTON	DATE 02/25/13		SCALE 1" = 5'	REVISED 05/21/13

ROUTE NO.	SECTION	COUNTY	TOTAL SHEETS	THIS SHEET
LOCAL STREET	*	TAZEWELL	23	14

FED. RD. DIST. NO. 7 ILLINOIS PROJECT  
 12-00112-00-SW  
 CONTRACT NO. 89623



**EROSION CONTROL LEGEND**

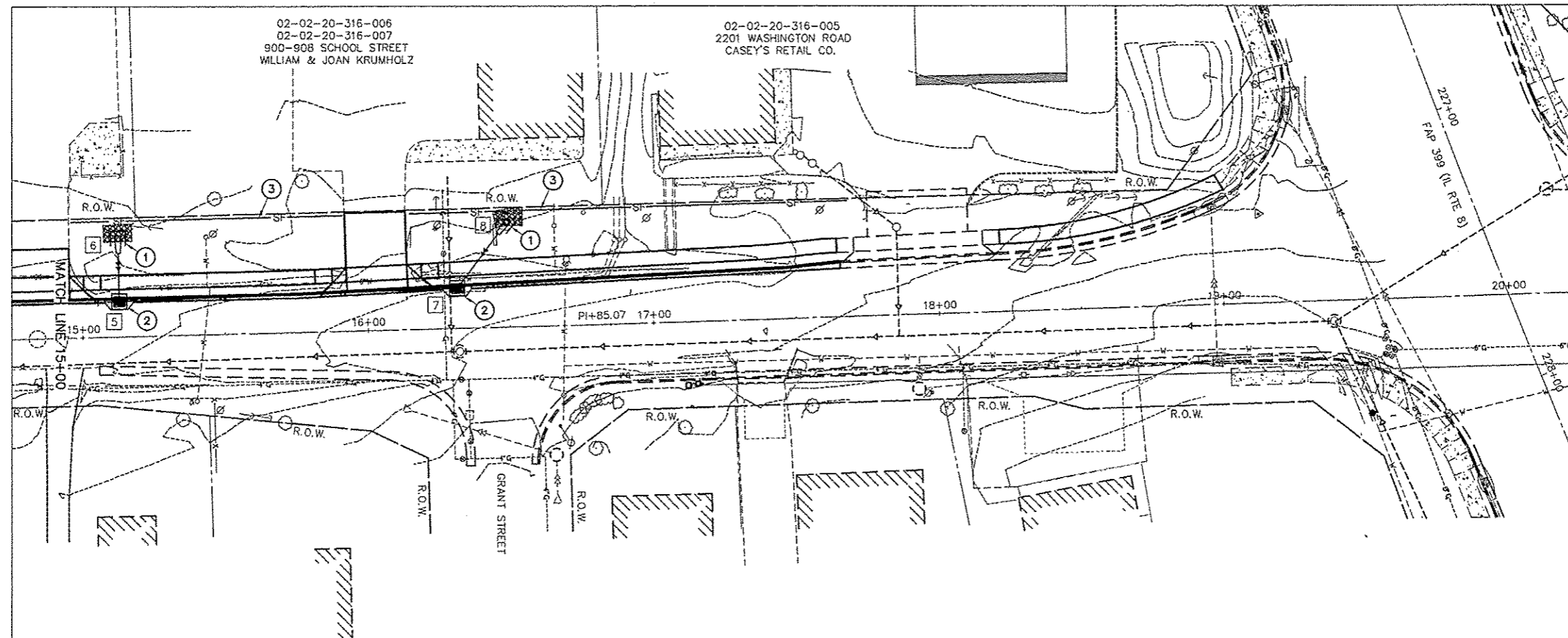
- ① INLET AND PIPE PROTECTION
- ② INLET FILTERS
- SF — ③ PERIMETER EROSION BARRIER
- ④ STORM SEWER STRUCTURE NUMBER
- STONE RIPRAP, CLASS B3

ALL TEMPORARY EROSION CONTROL MEASURES SHALL BE CONSTRUCTED IN ACCORDANCE WITH I.D.O.T. HIGHWAY STANDARD 280001-07

EROSION CONTROL PLAN 10+00 TO 15+00 BEVERLY MANOR SCHOOL SIDEWALK		AUSTIN ENGINEERING CO., INC. CIVIL ENGINEERS	
FOR: CITY OF WASHINGTON	DATE: 12/19/13	PROJ: 12-00112-00-SW	SHEET NO. 14 OF 23

ROUTE NO.	SECTION	COUNTY	TOTAL SHEETS	THIS SHEET
LOCAL STREET	*	TAZEWELL	23	15

FED. RD. DIST. NO. 7 ILLINOIS PROJECT  
 12-00112-00-SW  
 CONTRACT NO. 89623



**28000500 INLET & PIPE PROTECTION**

LOCATION	QUANTITY
STORM STRUCTURE EX.	1 EA.
STORM STRUCTURE 6	1 EA.
STORM STRUCTURE 8	1 EA.
<b>PROJECT TOTAL</b>	<b>3 EA.</b>

**28000400 PERIMETER EROSION BARRIER**

LOCATION	QUANTITY
LT. STA. 11+69.5 TO LT. STA. 12+03.5	34 FT
LT. STA. 12+26.9 TO LT. STA. 13+11.1	86
LT. STA. 13+33.5 TO LT. STA. 14+70.4	149
LT. STA. 14+96.7 TO LT. STA. 15+91.7	95
LT. STA. 16+15.3 TO LT. STA. 17+68.3	153
<b>PROJECT TOTAL</b>	<b>517 FT</b>

**28000510 INLET FILTERS**

LOCATION	QUANTITY
STORM STRUCTURE 1	1 EA.
STORM STRUCTURE 2	1
STORM STRUCTURE 3	1
STORM STRUCTURE 4	1
STORM STRUCTURE 5	1
STORM STRUCTURE 7	1
<b>PROJECT TOTAL</b>	<b>6 EA.</b>

**28100125 STONE RIPRAP, CLASS B3**

LOCATION	QUANTITY
LT. STA. 15+08.0 TO LT. STA. 15+18.0	7 SQ.YD.
LT. STA. 16+45.0 TO LT. STA. 16+55.0	7
<b>PROJECT TOTAL</b>	<b>14 SQ.YD.</b>

**EROSION CONTROL LEGEND**

- ① INLET AND PIPE PROTECTION
- ② INLET FILTERS
- SF — ③ PERIMETER EROSION BARRIER
- ⑤ STORM SEWER STRUCTURE NUMBER
- [Hatched Box] STONE RIPRAP, CLASS B3

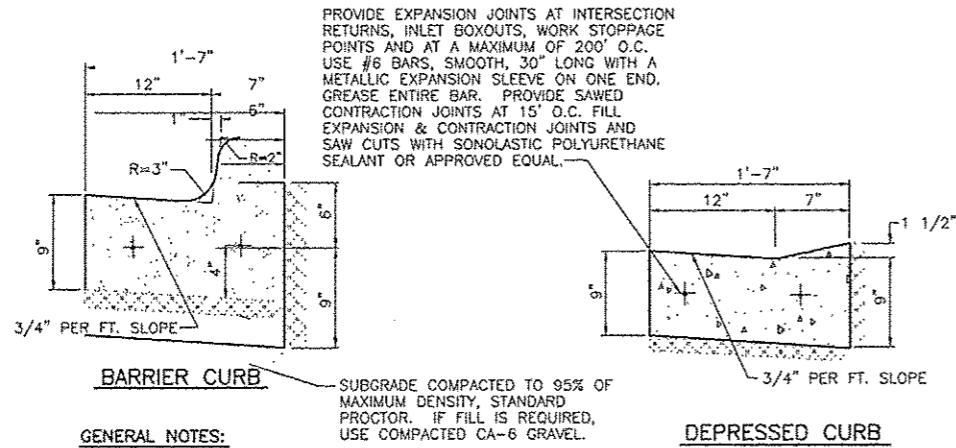
ALL TEMPORARY EROSION CONTROL MEASURES SHALL BE CONSTRUCTED IN ACCORDANCE WITH I.D.O.T. HIGHWAY STANDARD 280001-07

EROSION CONTROL PLAN-15+00 TO 20+00 BEVERLY MANOR SCHOOL SIDEWALK		AUSTIN ENGINEERING CO., INC. CIVIL ENGINEERS	
FOR: CITY OF WASHINGTON	DATE: 12/19/13	PROJECT: 12-00112-00-SW	SHEET NO: 15 OF 23

ROUTE NO.	SECTION	COUNTY	TOTAL SHEETS	THIS SHEET
LOCAL STREET	*	TAZEWELL	23	16

FED. RD. DIST. NO. 7 ILLINOIS PROJECT  
 12-00112-00-SW  
 CONTRACT NO. 89623

**COMBINATION CONCRETE CURB AND GUTTER  
 CITY STANDARD TYPE B-6.12**



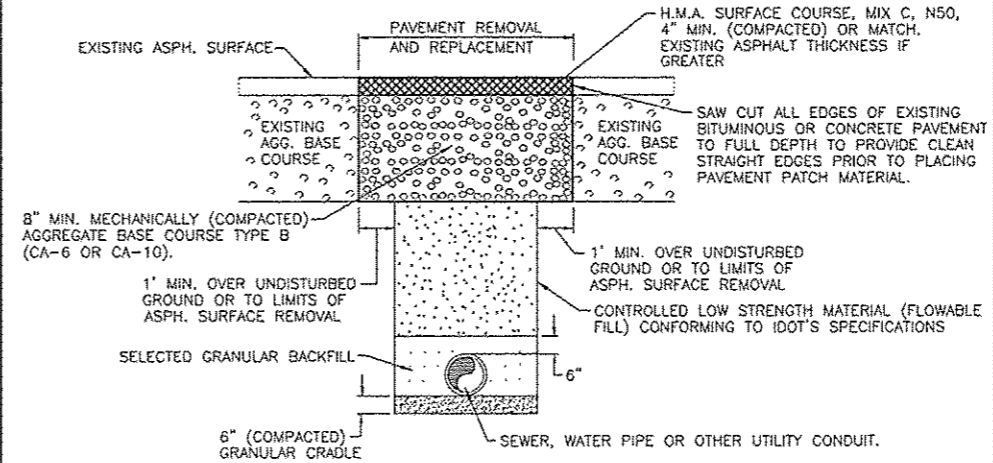
PROVIDE EXPANSION JOINTS AT INTERSECTION RETURNS, INLET BOXOUTS, WORK STOPPAGE POINTS AND AT A MAXIMUM OF 200' O.C. USE #6 BARS, SMOOTH, 30" LONG WITH A METALLIC EXPANSION SLEEVE ON ONE END. GREASE ENTIRE BAR. PROVIDE SAWED CONTRACTION JOINTS AT 15' O.C. FILL EXPANSION & CONTRACTION JOINTS AND SAW CUTS WITH SONOLASTIC POLYURETHANE SEALANT OR APPROVED EQUAL.

**GENERAL NOTES:**

- CONSTRUCTION SHALL BE IN ACCORDANCE WITH THE STATE OF ILLINOIS "STANDARD SPECIFICATIONS FOR ROAD AND BRIDGE CONSTRUCTION" CURRENT EDITION AND SUPPLEMENTAL SPECIFICATIONS, UNLESS OTHERWISE DIRECTED BY THE CITY ENGINEER.
- REFER TO SECTION 420 OF THE STANDARD SPECIFICATIONS.

City Of Washington	CONSTRUCTION STANDARD	DATE:	STANDARD NO.
		FEB. 2008	012

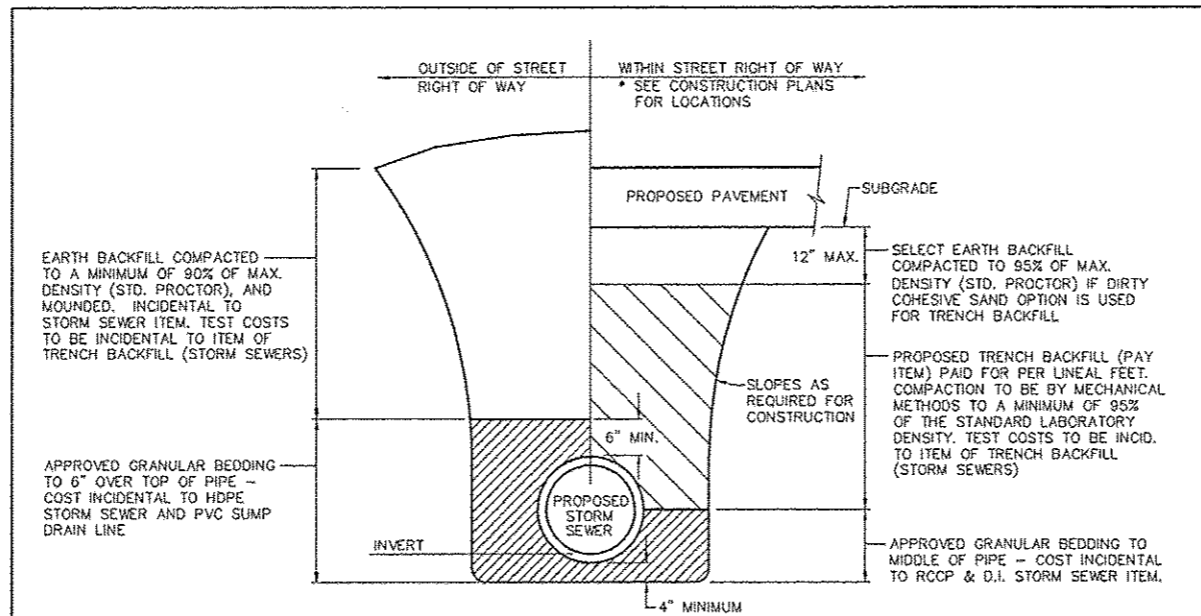
**TYPICAL STREET REPAIR FOR UNDERGROUND UTILITY INSTALLATION  
 STA. 10+55.24 TO STA. 11+17.76**



**GENERAL NOTES:**

- FOR CONCRETE OR BRICK PAVEMENTS, THE SURFACE SHALL BE REPLACED TO MATCH THE EXISTING PAVEMENT.
- PRIOR TO PLACING THE H.M.A., CONCRETE OR BRICK PAVEMENT, THE BASE COURSE SHALL BE INSPECTED BY THE CITY ENGINEER. THE FLOWABLE FILL AND BASE COURSE SHALL BE ALLOWED TO SET IN PLACE A MINIMUM OF 24 HOURS PRIOR TO PLACING THE PAVEMENT SURFACE.
- IF THE BITUMINOUS CONCRETE MATERIAL IS NOT AVAILABLE DUE TO SEASONAL CLOSING OF THE BATCH PLANTS, THEN A TEMPORARY SURFACE CONSISTING OF COLD MIX ASPHALT SHALL BE APPLIED UNTIL THE "HOT MIX" ASPHALT MATERIAL IS AVAILABLE.

City Of Washington	CONSTRUCTION STANDARD	DATE:	STANDARD NO.
		FEB. 2008	025



CA-6 OR DIRTY COHESIVE SAND IS THE WASHINGTON APPROVED GRANULAR BACKFILL MATERIAL TO BE USED.

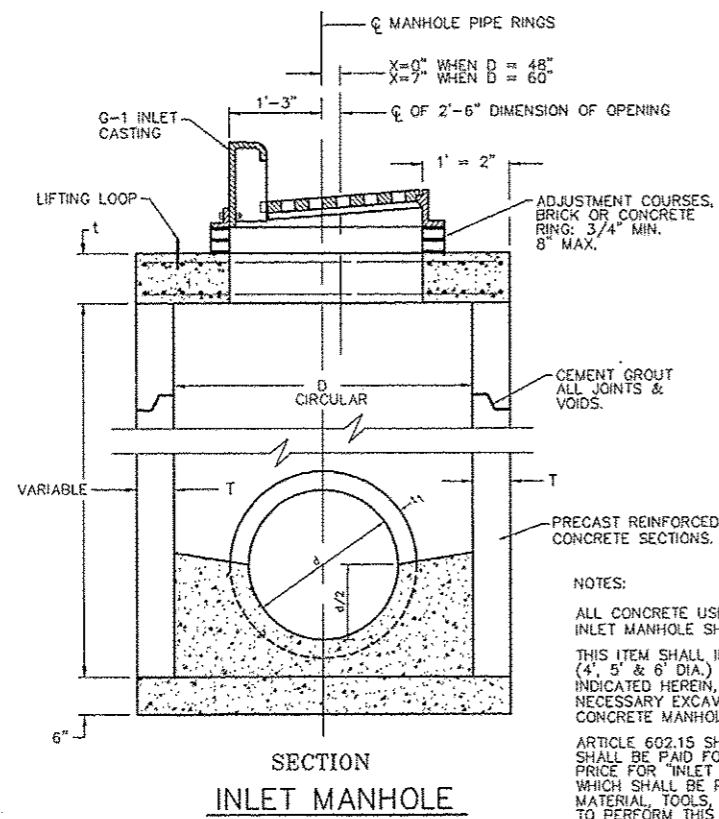
CA-7 OR CA-11 IS THE WASHINGTON APPROVED GRANULAR PIPE BEDDING MATERIAL; HOWEVER, WHITE FRACTURED CA-11 SHALL BE USED TO BED HDPE STORM SEWER PIPE.

**STORM SEWER & SUMP DRAIN LINE TRENCH DETAILS**

City Of Washington	CONSTRUCTION STANDARD	DATE:	STANDARD NO.
		FEB. 2008	023

MISCELLANEOUS CONSTRUCTION DETAILS BEVERLY MANOR SCHOOL SIDEWALK CITY OF WASHINGTON CONSTRUCTION STDS	AUSTIN ENGINEERING CO., INC. CIVIL ENGINEERS
FOR: CITY OF WASHINGTON	PROJECT: 12-00112-00-SW
DATE: 12/19/13	SHEET NO. 16 OF 23



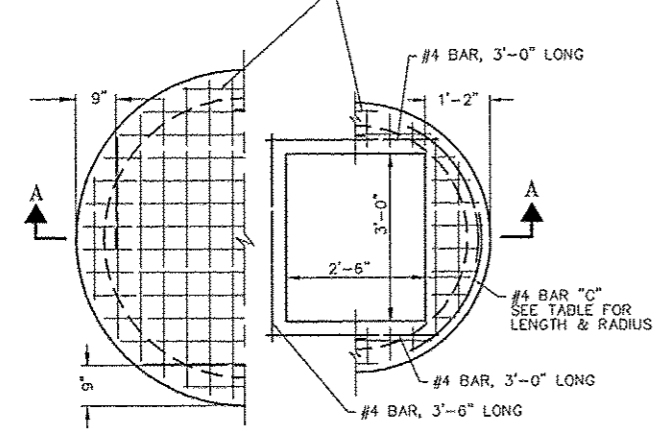


NOTES:  
 ALL CONCRETE USED FOR CONSTRUCTION OF THE INLET MANHOLE SHALL BE CLASS "SI" CONCRETE.  
 THIS ITEM SHALL INCLUDE THE INLET MANHOLE (4', 5' & 6' DIA.) COMPLETE IN PLACE AS INDICATED HEREIN, INCLUDING INLET CASTINGS, NECESSARY EXCAVATION, PRECAST REINFORCED CONCRETE MANHOLE PIPE RINGS.  
 ARTICLE 602.15 SHALL NOT APPLY, THIS ITEM SHALL BE PAID FOR AT THE CONTRACT UNIT PRICE FOR "INLET MANHOLE" AS SPECIFIED WHICH SHALL BE PAYMENT FOR ALL LABOR, MATERIAL, TOOLS, AND EQUIPMENT NECESSARY TO PERFORM THIS ITEM OF WORK, AS INDICATED.

TABLE

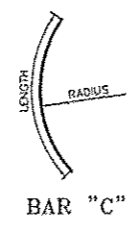
X	D	T	Do	t	REINFORCEMENT "As" WELDED WIRE FABRICS EACH DIRECTION		BAR "C"	
					BAR SIZE	LENGTH	RADIUS	
0'-0"	4'-0"	5"	4'-10"	6"	.70 SQ.IN./LIN.FT.	#5	4'-6"	2'-2"
0'-7"	5'-0"	6"	6'-0"	8"	.70 SQ.IN./LIN.FT.	#5	5'-0"	2'-8"

WELDED WIRE FABRIC TOP & BOTTOM SEE TABLE FOR "As" IN EACH DIRECTION

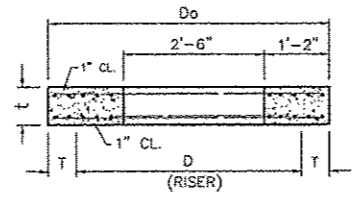


PLAN

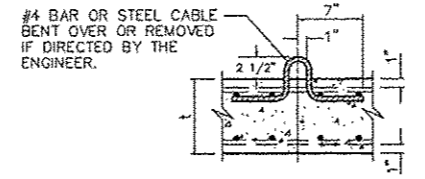
PRECAST REINFORCED CONCRETE FLAT SLAB TOP



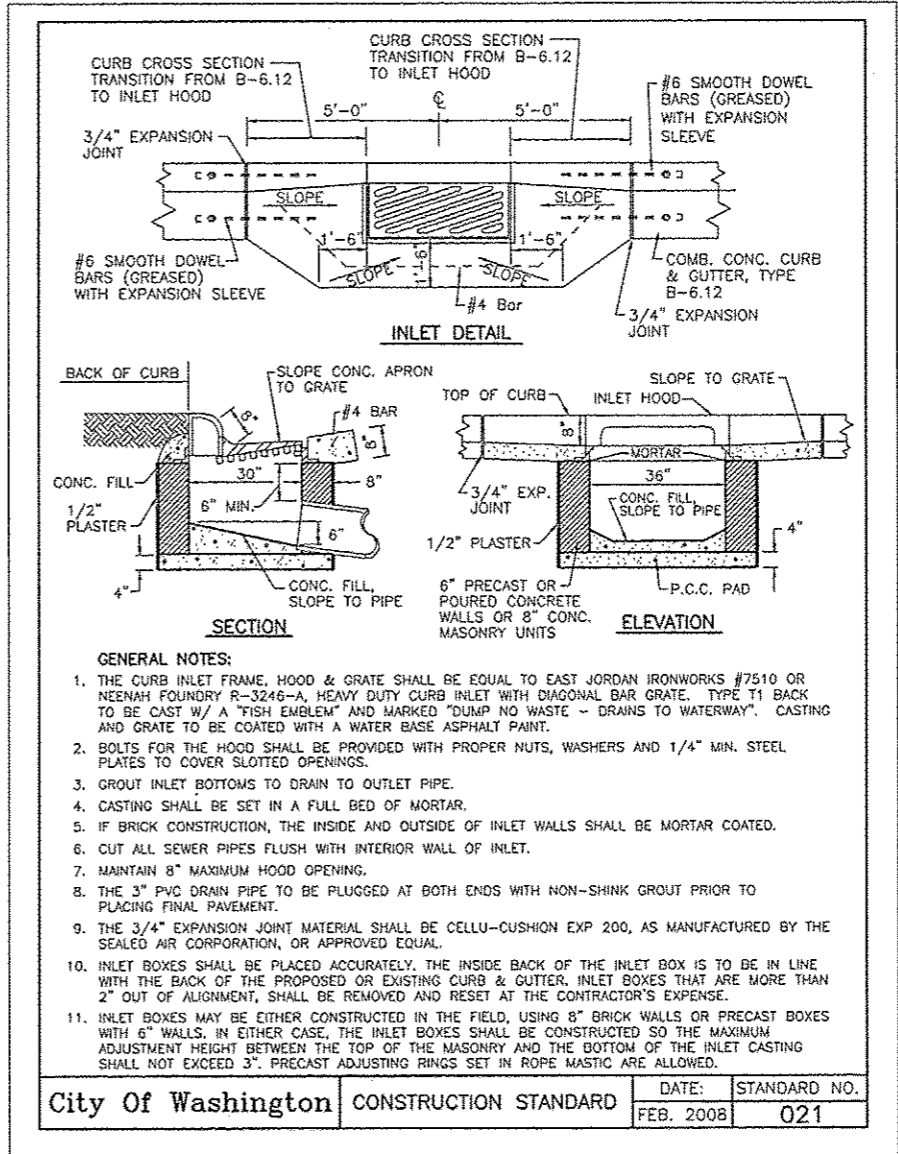
BAR "C"



SECTION A-A



LIFTING LOOP -TYPICAL- (3 REQUIRED PER SLAB)

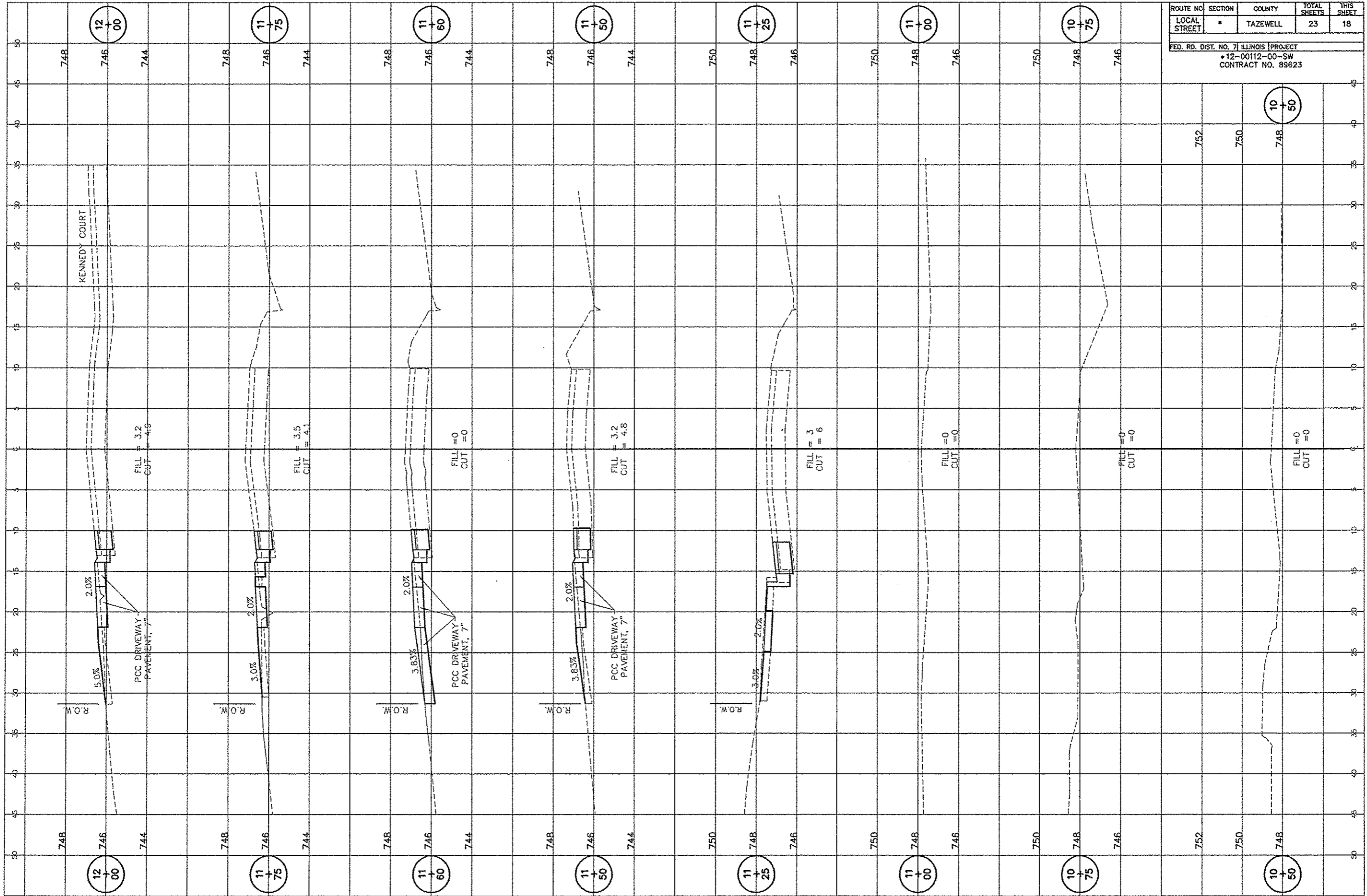


GENERAL NOTES:

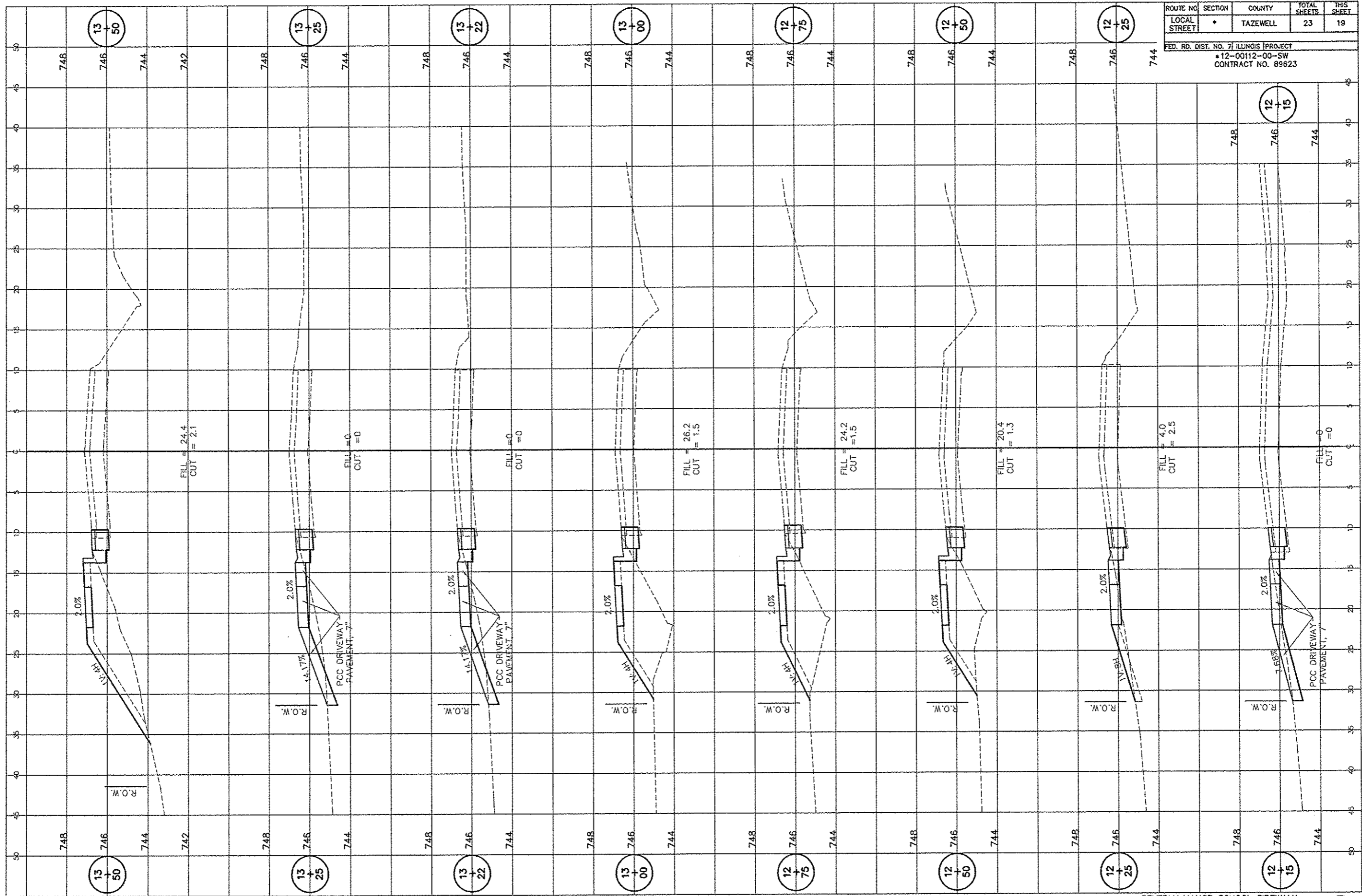
1. THE CURB INLET FRAME, HOOD & GRATE SHALL BE EQUAL TO EAST JORDAN IRONWORKS #7510 OR NEENAH FOUNDRY R-3246-A, HEAVY DUTY CURB INLET WITH DIAGONAL BAR GRATE. TYPE T1 BACK TO BE CAST W/ A "FISH EMBLEM" AND MARKED "DUMP NO WASTE - DRAINS TO WATERWAY". CASTING AND GRATE TO BE COATED WITH A WATER BASE ASPHALT PAINT.
2. BOLTS FOR THE HOOD SHALL BE PROVIDED WITH PROPER NUTS, WASHERS AND 1/4" MIN. STEEL PLATES TO COVER SLOTTED OPENINGS.
3. GROUT INLET BOTTOMS TO DRAIN TO OUTLET PIPE.
4. CASTING SHALL BE SET IN A FULL BED OF MORTAR.
5. IF BRICK CONSTRUCTION, THE INSIDE AND OUTSIDE OF INLET WALLS SHALL BE MORTAR COATED.
6. CUT ALL SEWER PIPES FLUSH WITH INTERIOR WALL OF INLET.
7. MAINTAIN 8" MAXIMUM HOOD OPENING.
8. THE 3" PVC DRAIN PIPE TO BE PLUGGED AT BOTH ENDS WITH NON-SHINK GROUT PRIOR TO PLACING FINAL PAVEMENT.
9. THE 3/4" EXPANSION JOINT MATERIAL SHALL BE CELLU-CUSHION EXP 200, AS MANUFACTURED BY THE SEALED AIR CORPORATION, OR APPROVED EQUAL.
10. INLET BOXES SHALL BE PLACED ACCURATELY, THE INSIDE BACK OF THE INLET BOX IS TO BE IN LINE WITH THE BACK OF THE PROPOSED OR EXISTING CURB & GUTTER, INLET BOXES THAT ARE MORE THAN 2" OUT OF ALIGNMENT, SHALL BE REMOVED AND RESET AT THE CONTRACTOR'S EXPENSE.
11. INLET BOXES MAY BE EITHER CONSTRUCTED IN THE FIELD, USING 8" BRICK WALLS OR PRECAST BOXES WITH 6" WALLS, IN EITHER CASE, THE INLET BOXES SHALL BE CONSTRUCTED SO THE MAXIMUM ADJUSTMENT HEIGHT BETWEEN THE TOP OF THE MASONRY AND THE BOTTOM OF THE INLET CASTING SHALL NOT EXCEED 3". PRECAST ADJUSTING RINGS SET IN ROPE MASTIC ARE ALLOWED.

City of Washington	CONSTRUCTION STANDARD	DATE:	STANDARD NO.
		FEB. 2008	021

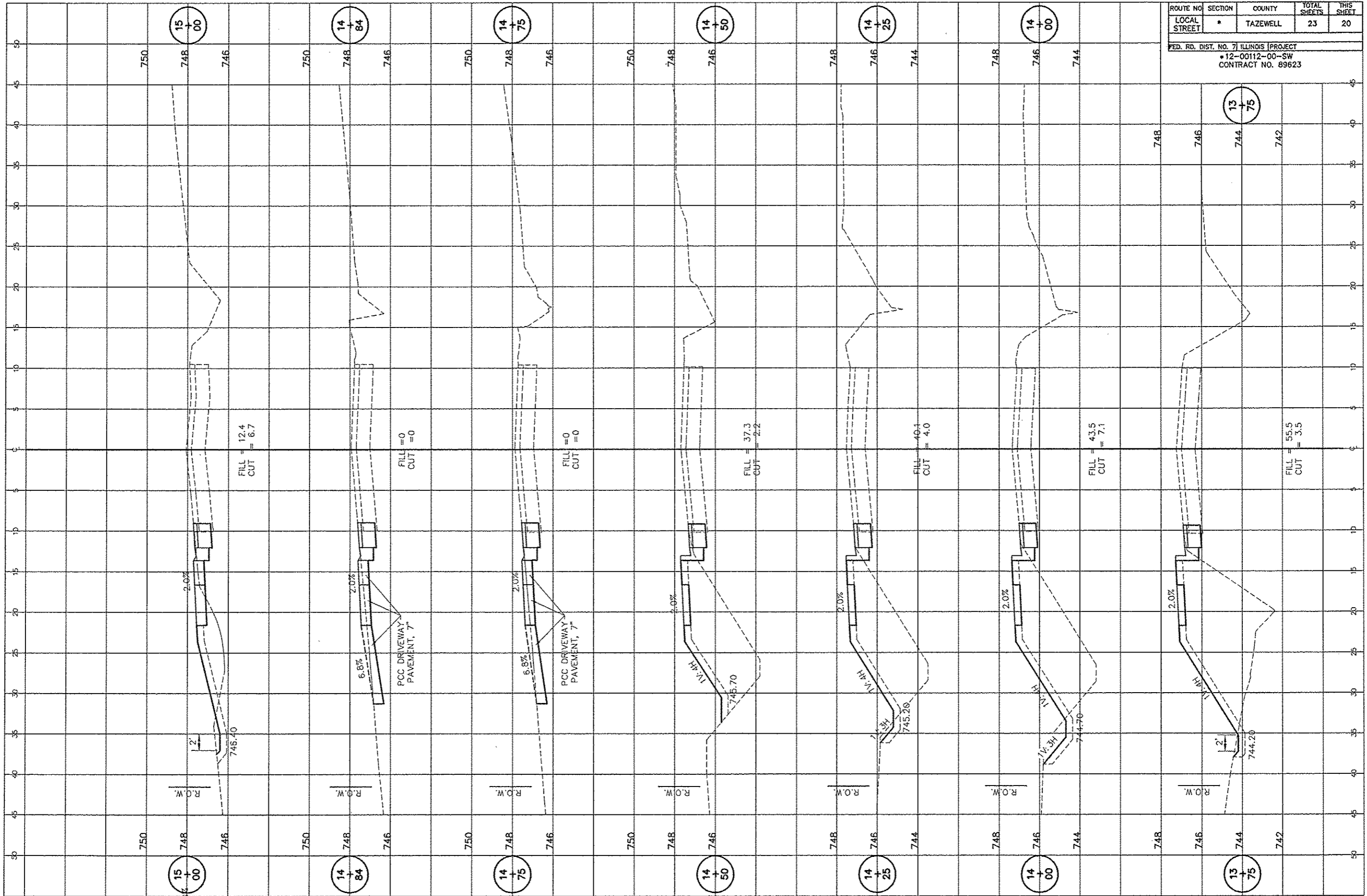
ROUTE NO.	SECTION	COUNTY	TOTAL SHEETS	THIS SHEET
LOCAL STREET	*	TAZEWELL	23	18
FED. RD. DIST. NO. 7 ILLINOIS PROJECT				
*12-00112-00-SW				
CONTRACT NO. 89623				



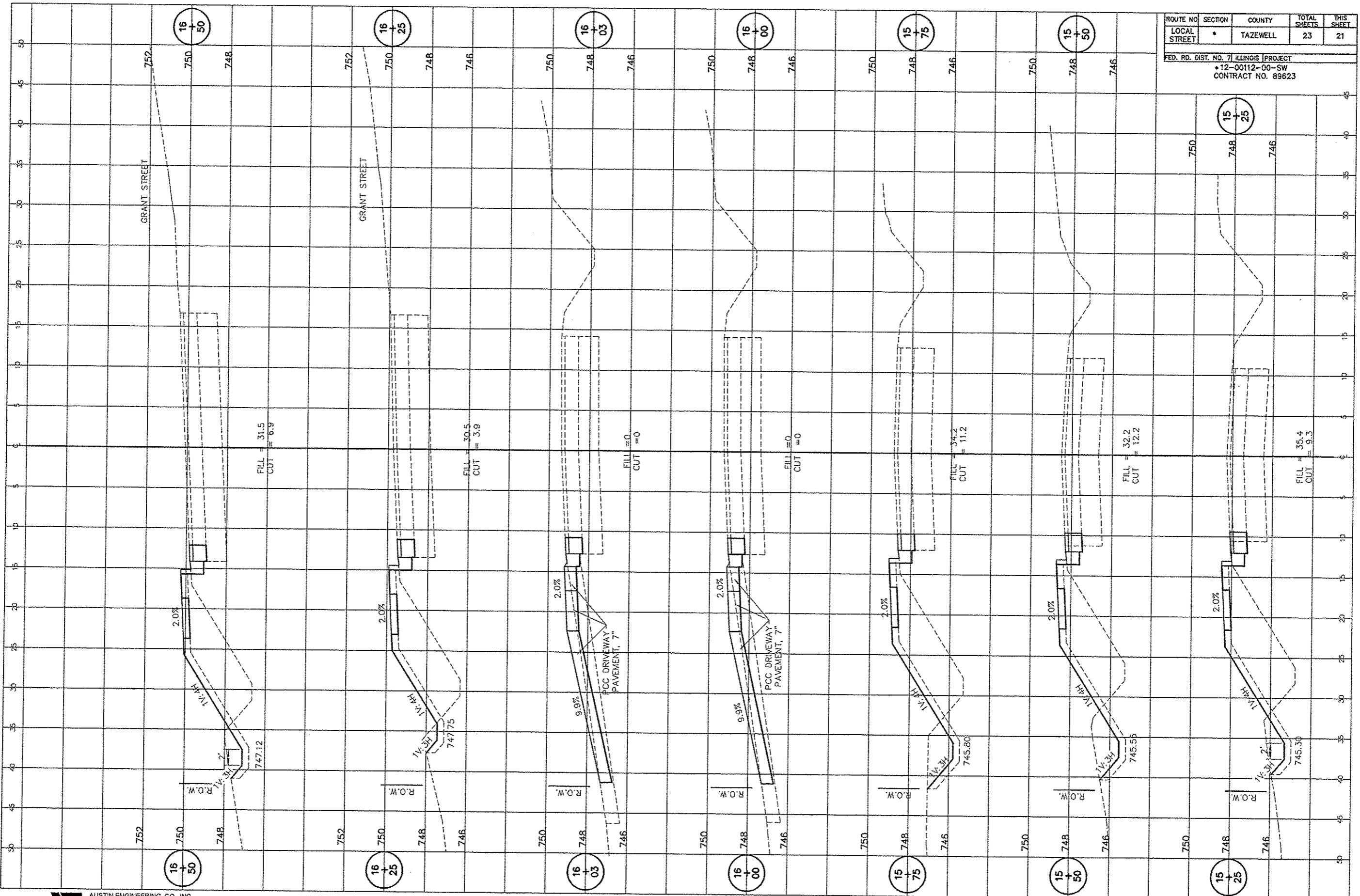
ROUTE NO.	SECTION	COUNTY	TOTAL SHEETS	THIS SHEET
LOCAL STREET	*	TAZEWELL	23	19
FED. RD. DIST. NO. 71 ILLINOIS PROJECT				
*12-00112-00-SW				
CONTRACT NO. 89623				



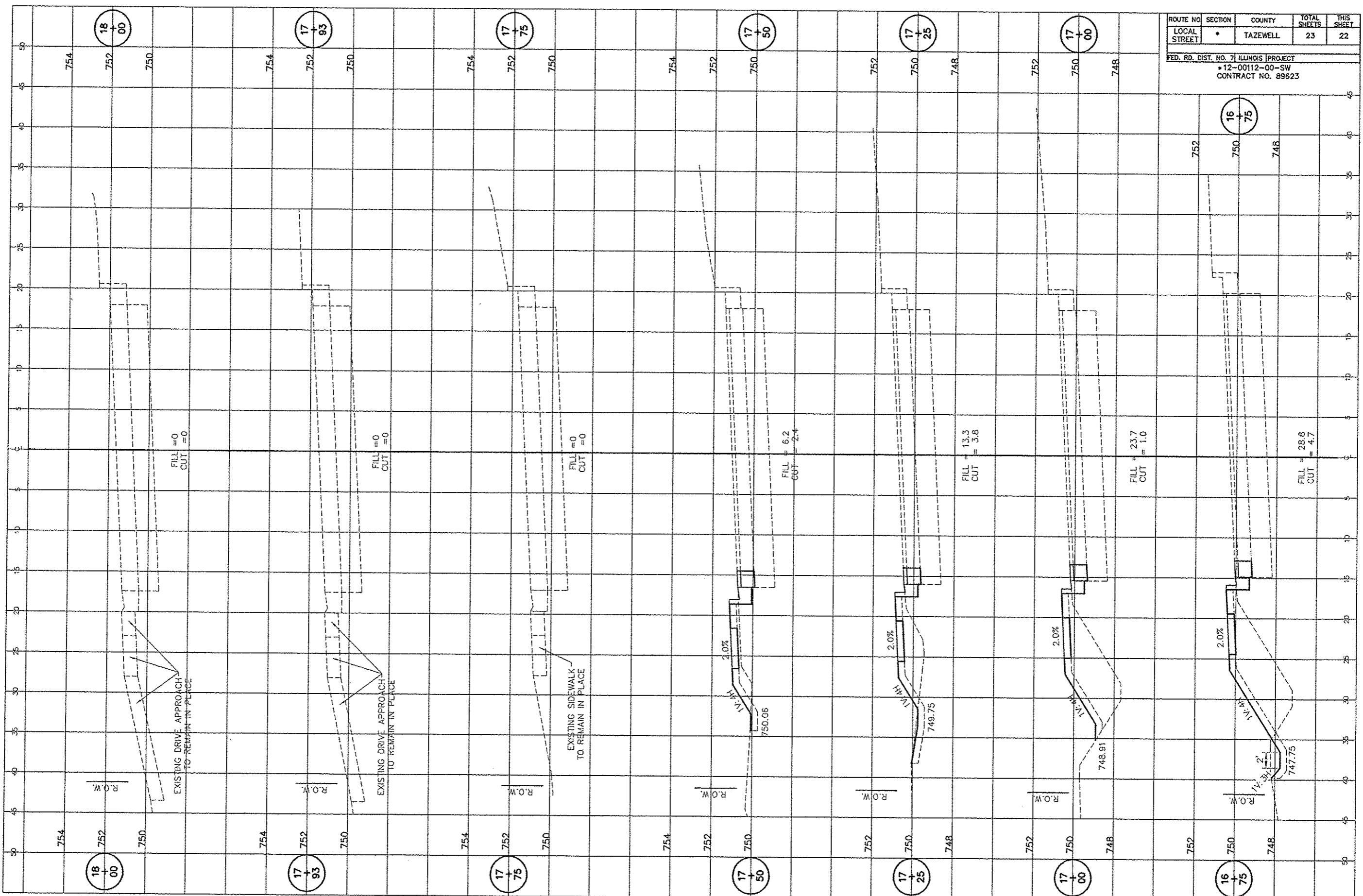
ROUTE NO.	SECTION	COUNTY	TOTAL SHEETS	THIS SHEET
LOCAL STREET	*	TAZEWELL	23	20
FED. RD. DIST. NO. 7 ILLINOIS PROJECT				
*12-00112-00-SW				
CONTRACT NO. 89623				



ROUTE NO.	SECTION	COUNTY	TOTAL SHEETS	THIS SHEET
12	00112-00-SW	TAZEWELL	23	21
FED. RD. DIST. NO. 7 ILLINOIS PROJECT				
*12-00112-00-SW				
CONTRACT NO. 89623				



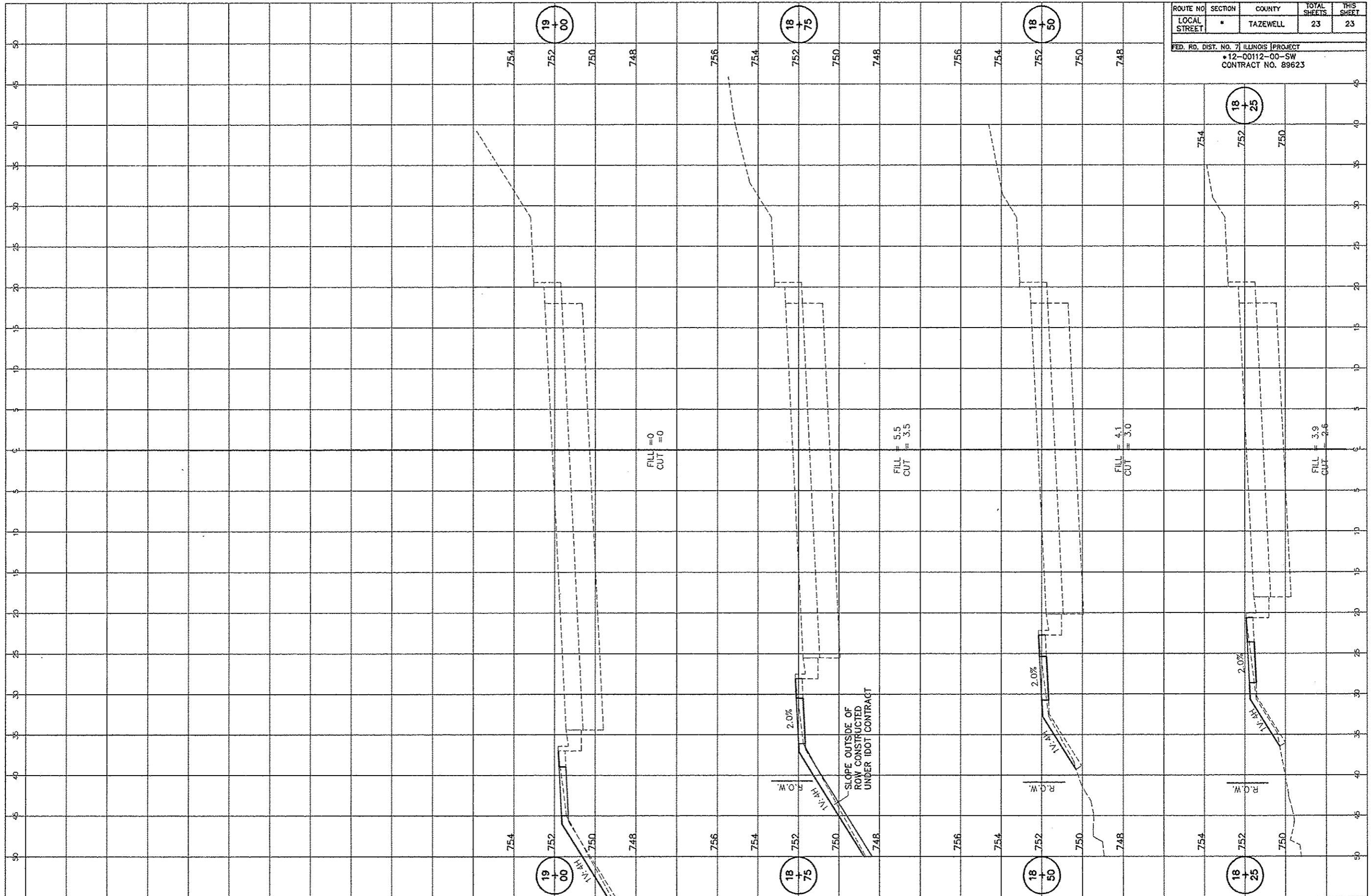
ROUTE NO	SECTION	COUNTY	TOTAL SHEETS	THIS SHEET
17	00	TAZEWELL	23	22
FED. RD. DIST. NO. 7 ILLINOIS PROJECT				
• 12-00112-00-SW				
CONTRACT NO. 89623				



**AE** AUSTIN ENGINEERING, CO., INC.  
 Consulting Engineers & Surveyors  
 8100 North University Street  
 Peoria, Illinois 61614-5279  
 License No. 124-001148

BEVERLY MANOR SCHOOL SIDEWALK  
 WASHINGTON, ILLINOIS

ROUTE NO	SECTION	COUNTY	TOTAL SHEETS	THIS SHEET
18	50	TAZEWELL	23	23
FED. RD. DIST. NO. 7 ILLINOIS PROJECT				
*12-00112-00-SW				
CONTRACT NO. 89623				



FILL = 0  
CUT = 0

FILL = 5.5  
CUT = 3.5

FILL = 4.1  
CUT = 3.0

FILL = 3.9  
CUT = 2.6

2.0%  
R.O.W.  
SLOPE OUTSIDE OF ROW CONSTRUCTED UNDER IDOT CONTRACT

2.0%  
R.O.W.

2.0%  
R.O.W.