

F.A. ROUTE	SECTION	COUNTY	TOTAL SHEETS	SHEET NO.
	12-00003-00-SW	PEORIA	16	1
FEDERAL NO. SRTS - 4009(266) ILLINOIS		CONTRACT NO. 89651		

STATE OF ILLINOIS  
DEPARTMENT OF TRANSPORTATION  
DIVISION OF HIGHWAYS  
**PLANS FOR  
SAFE ROUTE TO SCHOOLS  
CITY OF ELMWOOD, IL**

MAIN ST., ALTHEA ST., MORGAN ST.,  
ASH ST., MAGNOLIA ST., FREMONT ST., AND BUTTERNUT ST.

COUNTY OF PEORIA, ILLINOIS  
SECTION 12-00003-00-SW  
FEDERAL PROJECT NO. SRTS-4009(266)  
JOB NO. C-94-013-14  
CITY OF ELMWOOD

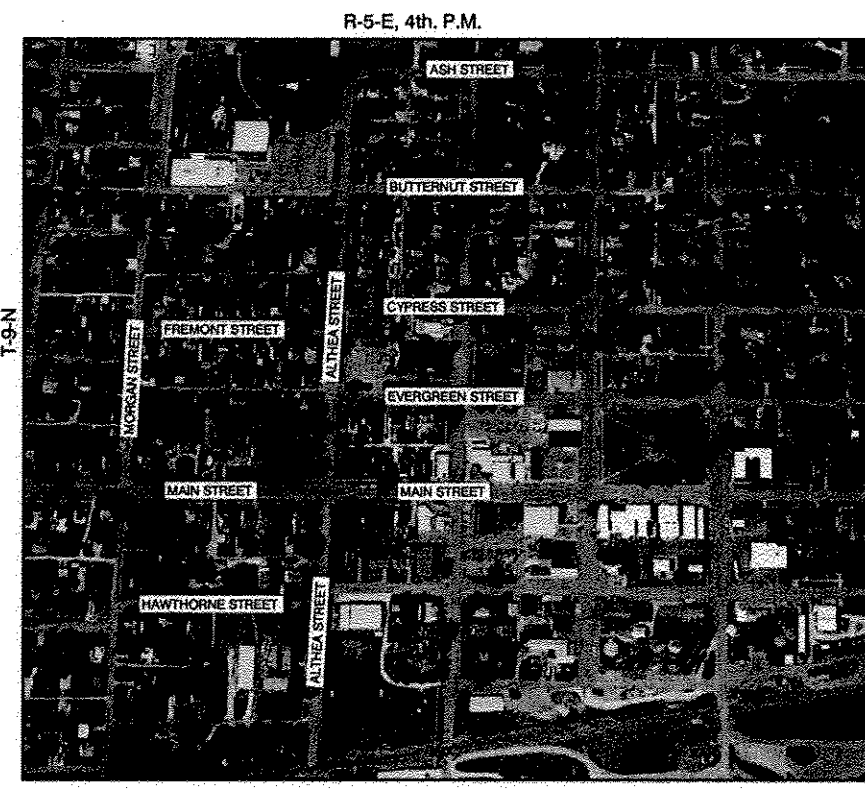
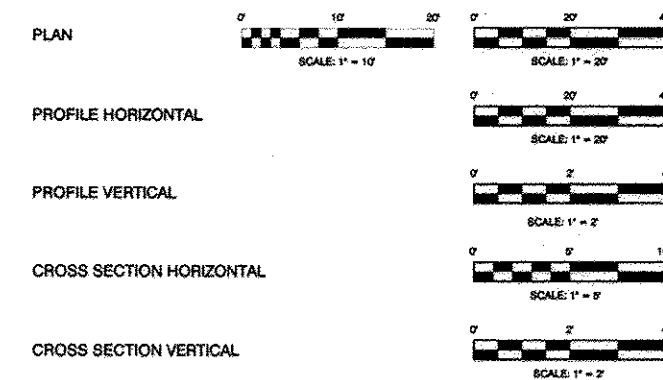
**INDEX OF SHEETS**

- 1 COVER SHEET
- 2 TYPICAL SECTIONS
- 3 SCHEDULES OF QUANTITIES
- 4 SUMMARY OF QUANTITIES AND GENERAL NOTES
- 5 PLAN VIEW - ALTHEA ST. STA. 24+50 TO STA. 36+00
- 6 PLAN VIEW - ALTHEA ST. STA. 36+00 TO STA. 43+00
- 7 ALTHEA ST. INTERSECTION DETAILS
- 8 PLAN VIEW AND INTERSECTION DETAIL - MORGAN ST.
- 9 PLAN VIEW AND INTERSECTION DETAIL - MAIN ST.
- 10 PLAN VIEW AND INTERSECTION DETAIL - ASH ST.
- 11 **URBAN ENTRANCES, ACCESSIBLE TO THE DISABLED FOR CURBLINE SIDEWALKS**
- 13 **URBAN ENTRANCES, ACCESSIBLE TO THE DISABLED FOR SEPARATED SIDEWALKS**
- 15 **TYPICAL PAVEMENT MARKINGS**

- 000001-06 STANDARD SYMBOLS, ABBREVIATIONS AND PATTERNS
- 424001-07 PERPENDICULAR CURB RAMPS FOR SIDEWALKS
- 424006-01 DIAGONAL CURB RAMPS FOR SIDEWALKS
- 424011-01 CORNER PARALLEL CURB RAMPS FOR SIDEWALKS
- 424016-01 MID-BLOCK CURB RAMPS FOR SIDEWALKS
- 606001-05 COMB. CURB TYPE B & COMB. CONCRETE CURB AND GUTTER
- 701301-04 LANE CLOSURE, 2L, 2W, SHORT TIME OPERATIONS
- 701501-06 URBAN LANE CLOSURE, 2L, 2W, UNDIVIDED
- 701801-05 SIDEWALK, CORNER OR CROSSWALK CLOSURE
- 701901-03 TRAFFIC CONTROL DEVICES
- 720006-04 SIGN PANEL ERECTION DETAILS
- 720011-01 METAL POST FOR SIGNS, MARKERS AND DELINEATORS
- 728001-01 TELESCOPING STEEL SIGN SUPPORT
- 729001-01 APPLICATIONS OF TYPES A & B METAL POSTS

B.L.R. 18-5 DAY LABOR MAINTENANCE

**SCALES**

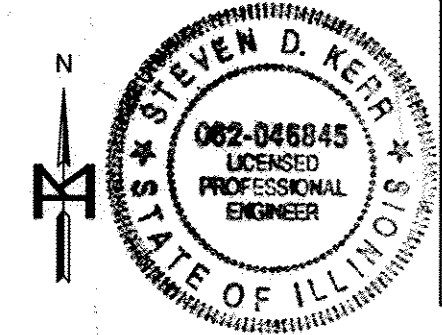


LOCATION SKETCH  
N.T.S.  
CITY OF ELMWOOD

APPROVED 2/5/14 2014  
*[Signature]*  
LOCAL AGENCY OFFICIAL

PASSED 02-27 2014  
*[Signature]*  
DISTRICT 4 ENGINEER OF  
LOCAL ROADS & STREETS

RELEASING FOR  
BID BASED ON  
LIMITED REVIEW  
FEB 24 2014  
*[Signature]*  
DEPUTY DIRECTOR OF HIGHWAY  
REGION THREE ENGINEER  
STATE OF ILLINOIS  
DEPARTMENT OF TRANSPORTATION



*[Signature]* 2/5/14  
DATE: 2/5/14  
STEVEN D KERR, P.E.  
ILLINOIS REGISTRATION 062-046845  
EXPIRES 11/30/15

NEW IMPROVEMENT CONSISTS OF CONSTRUCTING P.C.C. SIDEWALK, 4", P.C.C. DRIVEWAY PAVEMENT, PATCHING AND SEEDING.

**JULIE LOCATION**

CALL JULIE 1-800-892-0123 48 HOURS BEFORE YOU DIG  
EXCLUDING SATURDAYS, SUNDAYS, AND HOLIDAYS

GROSS LENGTH OF PROJECT: = 1,850 FOOT  
ALTERNATE GROSS LENGTH OF PROJECT: 142 FOOT

**M MOHR & KERR ENGINEERING & LAND SURVEYING, P.C.**  
7336 N. University Ave. Office: (309) 692-8500  
Peoria, Illinois 61614 Fax: (309) 692-8501  
www.mohrandkerr.com Professional Design Firm #184.005091

PROJECT NO. 12-168  
SHEET 1 OF 16  
DRAWING NO. 1