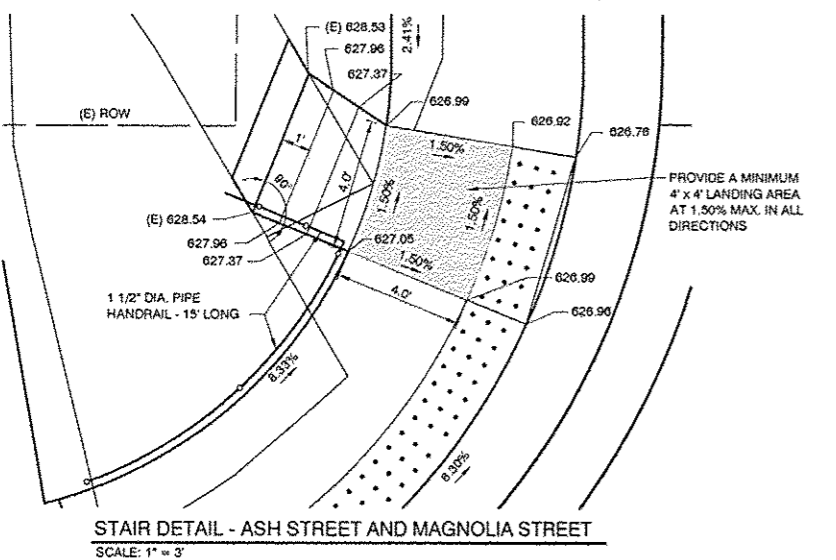
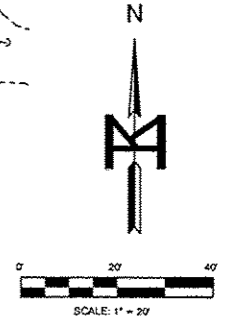


BENCH MARK: BM-5  
RAILROAD SPIKE IN POWER POLE  
WEST END OF ASH STREET  
ELEV. = 628.03

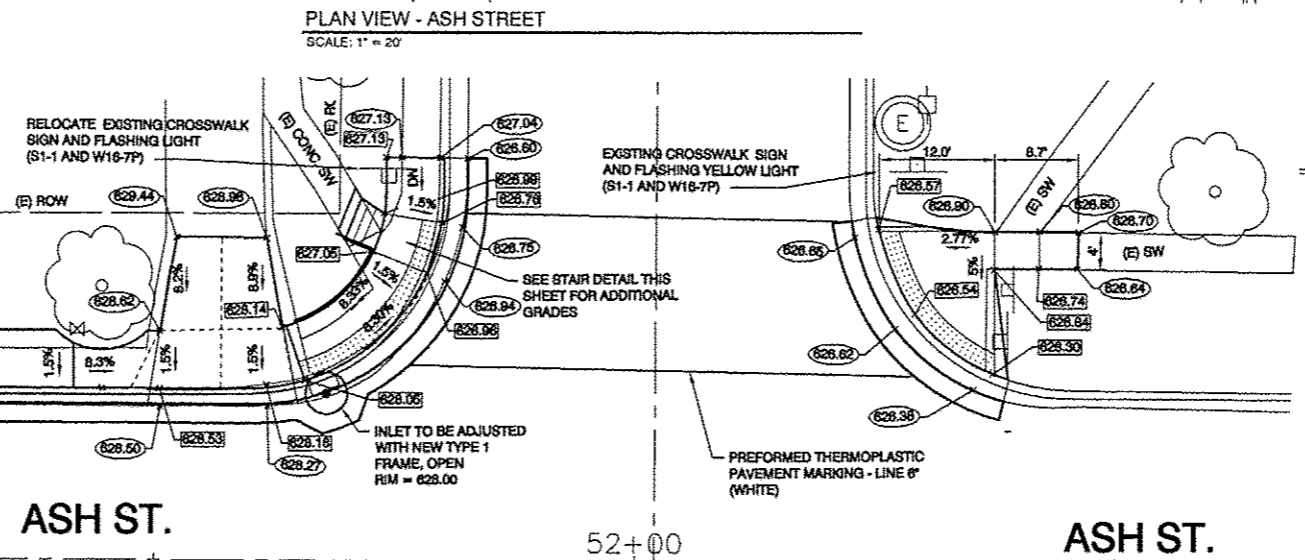
NOTE:  
ALL SIDEWALK TO BE CONSTRUCTED  
WITH 1.50% CROSS SLOPE OR FLATTER

S1-1 SIGN PANEL, TYPE 1, 4.7 S.F.  
W16-7P SIGN PANEL, TYPE 1, 2.2 S.F.  
METAL POST, TYPE A, 14.5 FT.

S1-1 SIGN PANEL, TYPE 1, 4.7 S.F.  
W16-7P SIGN PANEL, TYPE 1, 2.2 S.F.  
METAL POST, TYPE A, 14.5 FT.



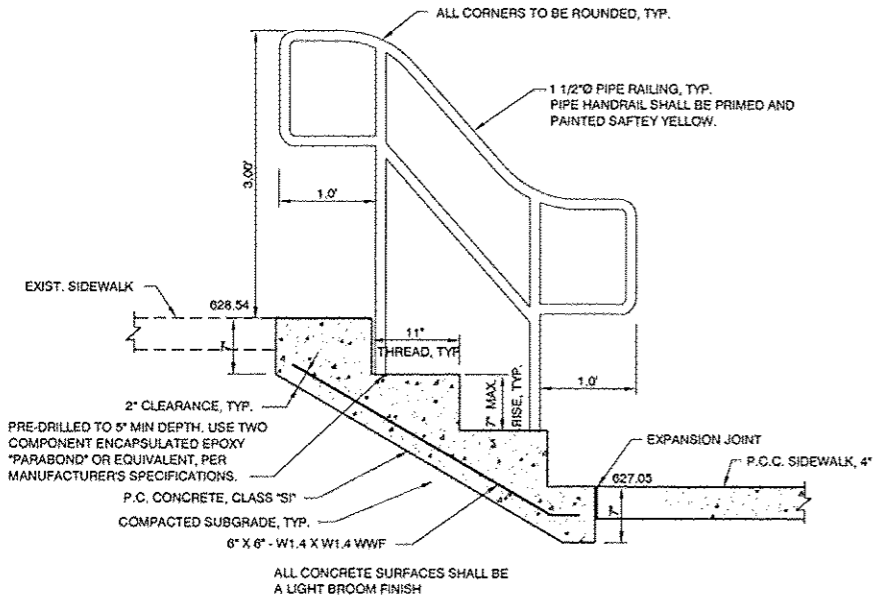
STAIR DETAIL - ASH STREET AND MAGNOLIA STREET  
SCALE: 1" = 3'



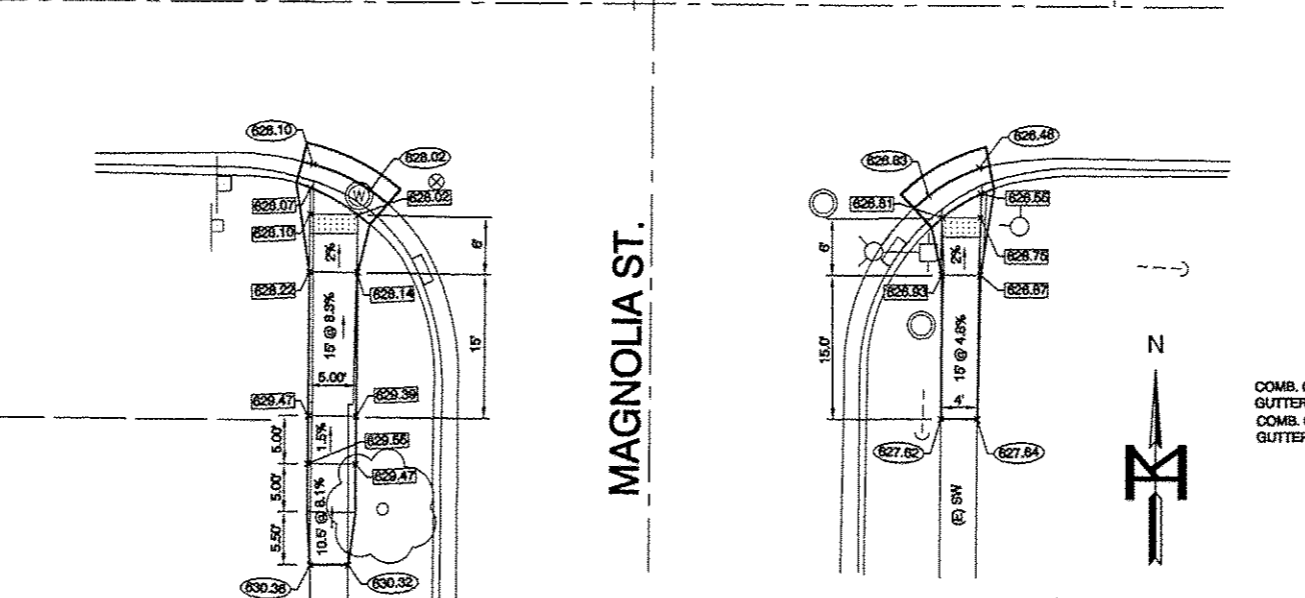
ASH ST. 52+00 ASH ST.

LEGEND

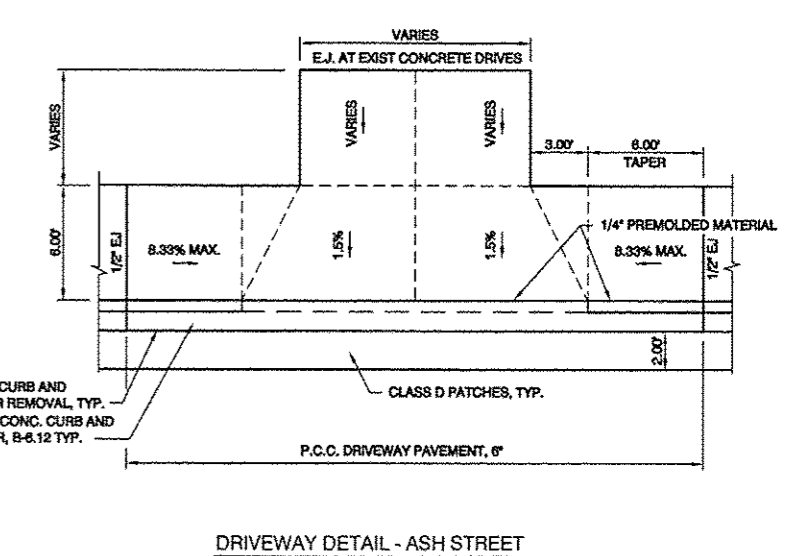
---	EXIST. RIGHT OF WAY LINE	⊗	EXIST. HAND HOLE
---	ADJACENT PROPERTY LINE	⊠	EXIST. SIGN
---	CENTERLINE OF ROAD	⊕	EXIST. TELEPHONE PEDESTAL
---	EXIST. FENCE	⊙	EXIST. WATER METER
---	EXIST. ELECTRIC METER	⊛	EXIST. WATER VALVE
---	EXIST. GAS VALVE	⊘	EXIST. CONIFER TREE
---	EXIST. GAS METER	⊙	EXIST. DECIDUOUS TREE
---	EXIST. FIRE HYDRANT	⊙	EXIST. SHRUB / BUSH
---	EXIST. STORM INLET	LS	LANDSCAPE
---	EXIST. LIGHT	CONC	CONCRETE
---	EXIST. MAILBOX	BIT	BITUMINOUS
---	EXIST. MANHOLE		



STAIR DETAIL - ELEVATION  
SCALE: 1" = 1'



INTERSECTION DETAIL - ASH STREET AND MAGNOLIA STREET  
SCALE: 1" = 10'



DRIVEWAY DETAIL - ASH STREET  
SCALE: 1" = 5'

P:\12-1008\DWG\10-ASH\_PP\_1\_12-1008.dwg, Feb 24, 2014

**M** MOHR & KERR ENGINEERING & LAND SURVEYING, P.C.  
7308 N. University Ave.  
Peoria, Illinois 61614  
Office: (309) 692-8900  
Fax: (309) 692-8901  
www.mohr-kerr.com  
#154 000001

P:\12-1008\DWG\10-ASH\_PP\_1\_12-1008.dwg  
DESIGNED SDK  
DRAWN MH/DK  
CHECKED SO/K  
DATE 02-24-14  
FEB 24, 2014

REVISIONS  
REVISED  
REVISED  
REVISED  
REVISED

STATE OF ILLINOIS  
DEPARTMENT OF TRANSPORTATION

SAFE ROUTE TO SCHOOL - CITY OF ELMWOOD, IL  
PLAN VIEW AND INTERSECTION DETAIL  
ASH STREET  
SCALE: AS NOTED SHEET NO. 10 OF 10 SHEETS STA. 48+00 TO STA. 52+50

F.A. ROUTE	SECTION	COUNTY	TOTAL SHEETS	SHEET NO.
---	12-00003-00-SW	PEORIA	16	10
FED PROJ. NO. SRTS-4009(266)		CONTRACT NO. 89651		
ILLINOIS FEDERAL ROAD DIST NO. 4				