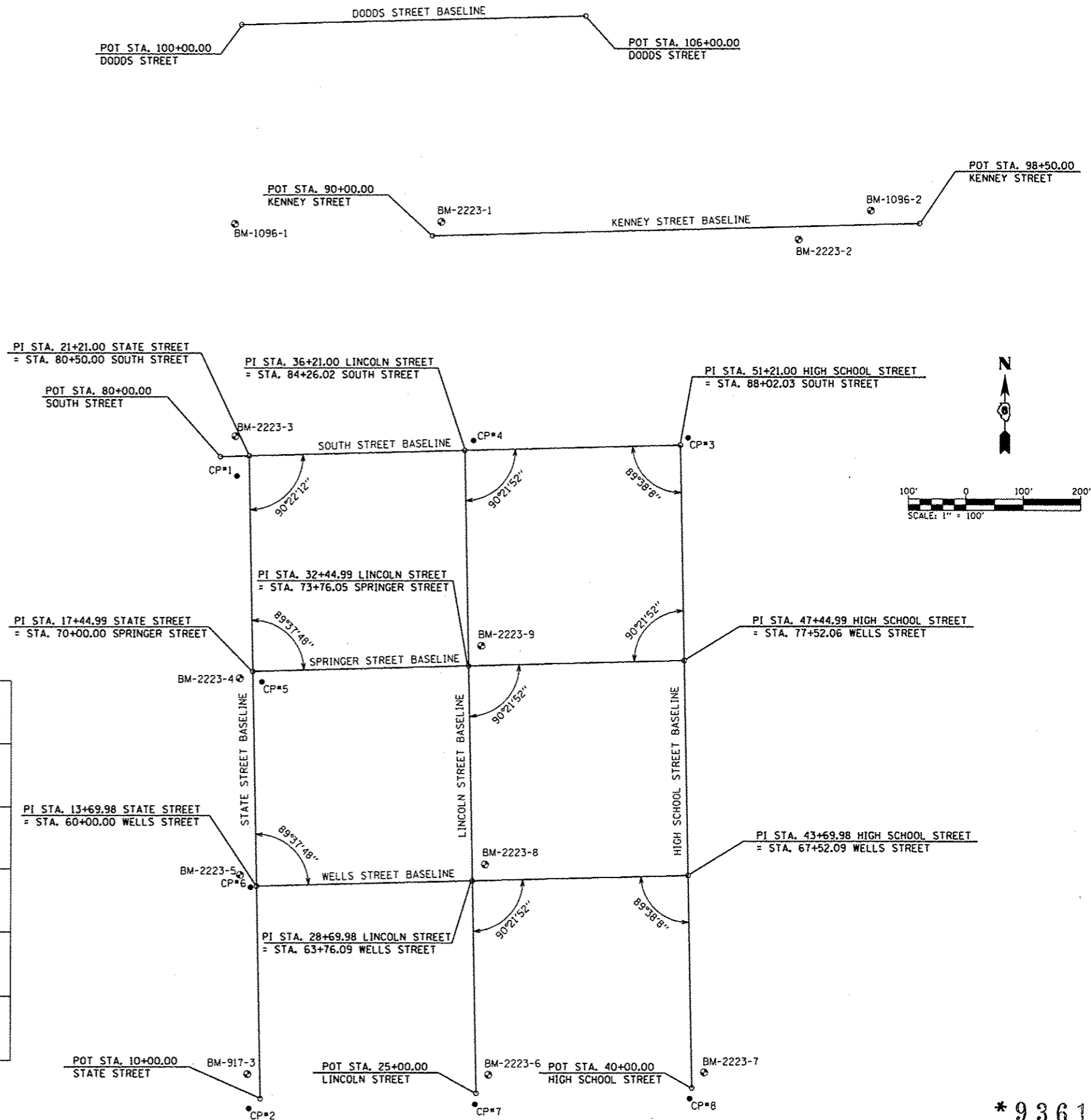


GROUND COORDINATES			
DESCRIPTION	POINT NO.	NORTHING	EASTING
CONTROL POINT			
	1	1055329.971	2440926.796
	2	1054227.455	2440949.971
	3	1055397.738	2441712.961
	4	1055392.351	2441338.698
	5	1054971.074	2440970.759
	6	1054612.606	2440952.199
	7	1054234.969	2441343.902
	8	1054245.517	2441717.776
STATE STREET			
POT STA. 10+00		1054244.459	2440969.675
PI STA. 13+69.98		1054614.373	2440962.442
PI STA. 17+44.99		1054989.309	2440955.111
PI STA. 21+21.00		1055365.245	2440947.761
LINCOLN STREET			
POT STA. 25+00.00		1054254.239	2441345.670
PI STA. 28+69.98		1054264.152	2441338.402
PI STA. 32+44.99		1054999.088	2441331.036
PI STA. 36+21.00		1055375.023	2441323.651
HIGH SCHOOL STREET			
POT STA. 40+00.00		1054264.016	2441721.550
PI STA. 43+69.98		1054633.930	2441714.283
PI STA. 47+44.99		1055008.865	2441706.917
PI STA. 51+21.00		1055384.800	2441699.531
SOUTH STREET			
POT STA. 80+00.00		1055363.945	2440897.777
KENNEY STREET			
POT STA. 90+00.00		1055749.658	2441266.282
POT STA. 98+50.00		1055771.760	2442115.995
DODDS STREET			
POT STA. 100+00.00		1056117.117	2440933.060
POT STA. 106+00.00		1056132.719	2441532.857



BM-1096-1 "M" IN MUELLER, TOP OF F. HYDRANT, N.W. COR. OF STATE STREET AND KENNEY STREET ELEVATION 616.49
BM-2223-1 "M" IN MUELLER, TOP OF F. HYDRANT, N.W. COR. OF LINCOLN STREET AND KENNEY STREET ELEVATION 617.33
BM-2223-2 "M" IN MUELLER, TOP OF F. HYDRANT, S. SIDE OF KENNEY STREET BETWEEN HIGH SCHOOL STREET AND HENRIETTA STREET ELEVATION 617.96
BM-1096-2 "M" IN MUELLER, TOP OF F. HYDRANT, N.W. COR. OF KENNEY STREET AND HENRIETTA STREET ELEVATION 617.03
BM-2223-3 "M" IN MUELLER, TOP OF F. HYDRANT, N.W. COR. OF STATE STREET AND SOUTH STREET ELEVATION 618.61
BM-2223-4 "M" IN MUELLER, TOP OF F. HYDRANT, S.W. COR. OF STATE STREET AND SPRINGER STREET ELEVATION 618.30

BM-2223-5 "M" IN MUELLER, TOP OF F. HYDRANT, W. SIDE OF STATE STREET AT INTERSECTION OF WELLS STREET ELEVATION 617.83
BM-917-3 "M" IN MUELLER, TOP OF F. HYDRANT, N.W. COR. OF STATE STREET AND MADISON STREET ELEVATION 618.42
BM-2223-6 "M" IN MUELLER, TOP OF F. HYDRANT, N.E. COR. OF LINCOLN STREET AND MADISON STREET ELEVATION 620.85
BM-2223-7 SINGLE BARN SPIKE IN PP, N.E. COR. OF MADISON STREET AND HIGH SCHOOL STREET ELEVATION 620.42
BM-2223-8 "M" IN MUELLER, TOP OF F. HYDRANT, N.E. COR. OF LINCOLN STREET AND WELLS STREET ELEVATION 618.19
BM-2223-9 "M" IN MUELLER, TOP OF F. HYDRANT, N.E. COR. OF LINCOLN STREET AND SPRINGER STREET ELEVATION 619.48