



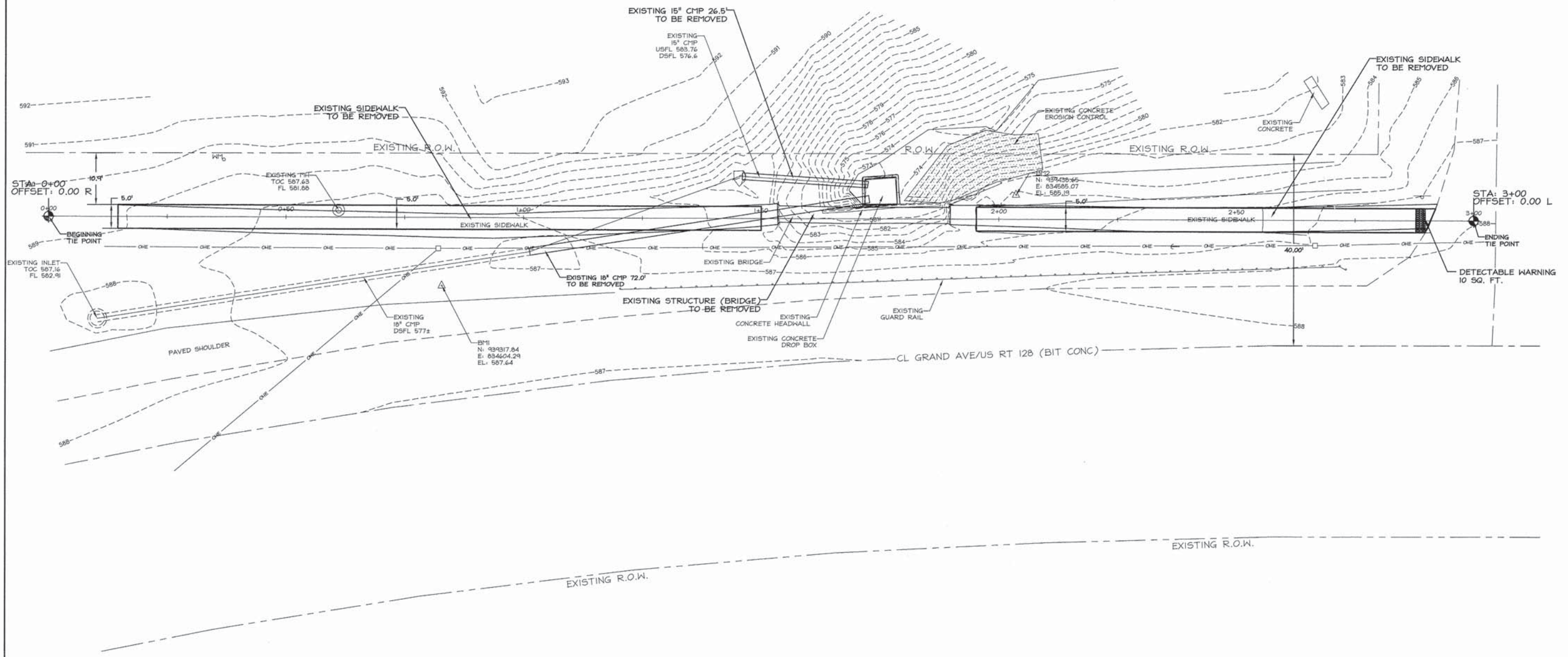


|                   |                |        |             |
|-------------------|----------------|--------|-------------|
| F.A. RTE.         | SECTION        | COUNTY | TOTAL SHEET |
| HWY 128 & CHRISTY | 10-00002-00-SH | SHELBY | 13          |
|                   |                |        | SHEETS NO.  |
|                   |                |        | 3           |

SCALE: 1" = 10' (24 X36)

LEGEND

- IRON PIN FOUND
- △ STONE FOUND
- 1/2" IRON PIN SET
- CONCRETE MONUMENT SET
- ⊥ POWER POLE
- ⊥ GUY WIRE
- ⊥ SIGN
- ⊥ WATER METER
- O/E — OVERHEAD ELECTRIC



| NO. | DESCRIPTION | BY | DATE | NO. | DESCRIPTION | BY  | DATE     |
|-----|-------------|----|------|-----|-------------|-----|----------|
|     |             |    |      |     | DESIGNED    |     |          |
|     |             |    |      |     | DRAWN       | WFL | 10/15/12 |
|     |             |    |      |     | CHECKED     | JHC | 10/15/12 |

VILLAGE OF COWDEN  
 SHELBY COUNTY, IL  
 SAFE ROUTES TO SCHOOL  
 PLAN SHEET - DEMOLITION

**JOHN H. CRAWFORD & ASSOCIATES, P.C.**  
 CIVIL ENGINEERS, LAND SURVEYORS  
 201 SOUTH DIVISION STREET, CARTERSVILLE, ILLINOIS 62918  
 PHONE (618) 985-6370 FAX (618) 985-4992  
 PROFESSIONAL DESIGN FIRM # 184-022885

|           |          |
|-----------|----------|
| SHEET NO. |          |
| 3         |          |
| ISSUE     | DATE     |
| A         | 10/15/12 |

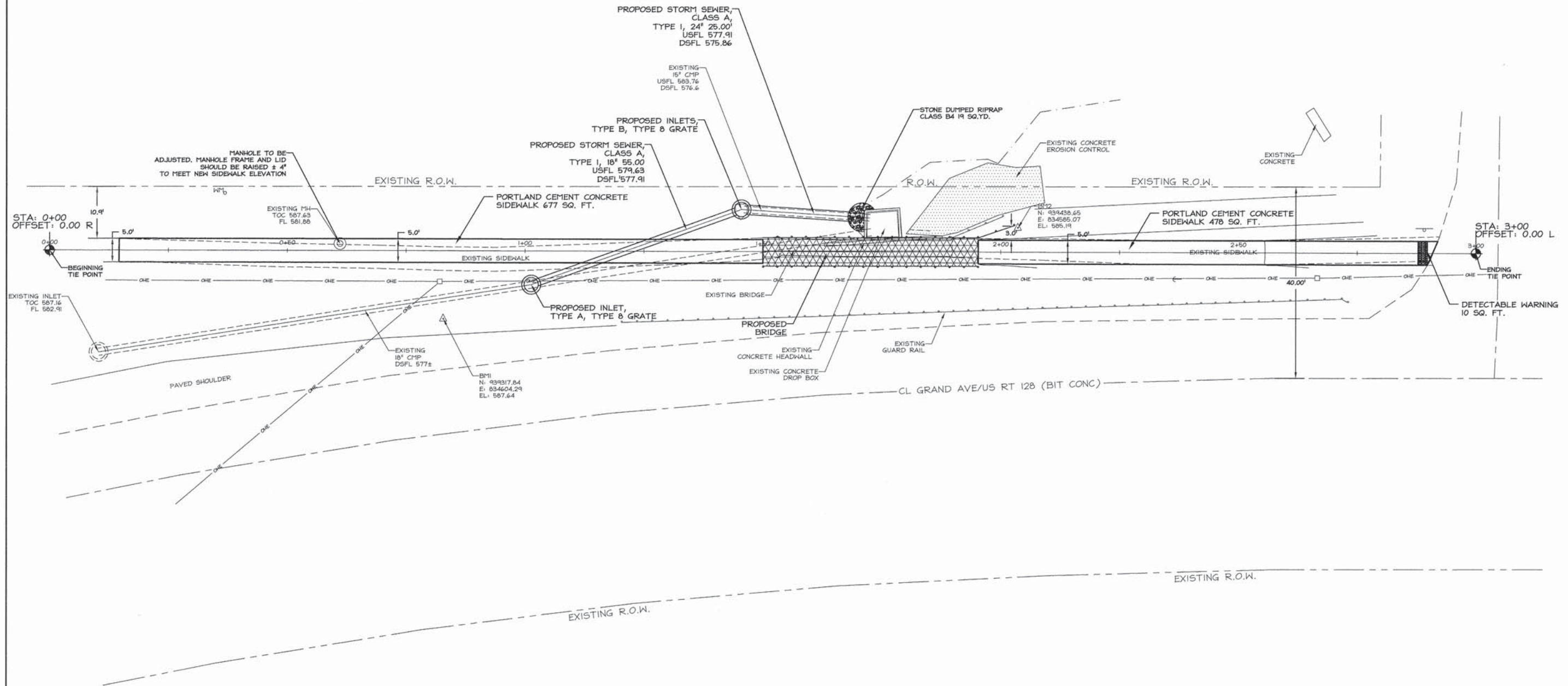
C:\Users\johncrawford\Documents\10-00002-00-SH\10-00002-00-SH-13.dwg 10/15/12 2:44:09 PM

|                   |                |        |              |           |
|-------------------|----------------|--------|--------------|-----------|
| F.A. RTE.         | SECTION        | COUNTY | TOTAL SHEETS | SHEET NO. |
| HWY 128 & CHRISTY | 10-00002-00-SW | SHELBY | 13           | 4         |

SCALE: 1" = 10' (24 X 36)

LEGEND

- IRON PIN FOUND
- ▲ STONE FOUND
- 1/2" IRON PIN SET
- CONCRETE MONUMENT SET
- ⊕ POWER POLE
- ⊖ GUY WIRE
- ⊙ SIGN
- ⊙ WATER METER
- OHE — OVERHEAD ELECTRIC
- BICYCLE RAILING



| NO. | DESCRIPTION | BY | DATE | NO. | DESCRIPTION | BY  | DATE     |
|-----|-------------|----|------|-----|-------------|-----|----------|
|     |             |    |      |     | DESIGNED    |     |          |
|     |             |    |      |     | DRAWN       | WFL | 10/15/12 |
|     |             |    |      |     | CHECKED     | JHC | 10/15/12 |

VILLAGE OF COWDEN  
 SHELBY COUNTY, IL  
 SAFE ROUTES TO SCHOOL  
 PLAN SHEET - IMPROVEMENT

**JOHN H. CRAWFORD & ASSOCIATES, P.C.**  
 CIVIL ENGINEERS, LAND SURVEYORS  
 201 SOUTH DIVISION STREET, CARTERSVILLE, ILLINOIS 62918  
 PHONE (618) 985-8370 FAX (618) 985-4892  
 PROFESSIONAL DESIGN FIRM # 184-002885

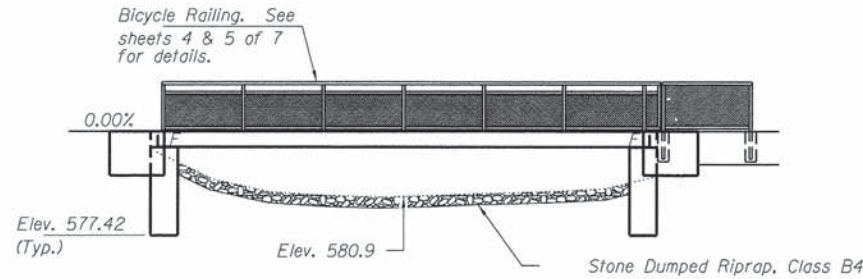
|           |          |
|-----------|----------|
| SHEET NO. |          |
| 4         |          |
| ISSUE     | DATE     |
| A         | 10/15/12 |

C:\Users\jhcrawford\Documents\Projects\10-00002-00-SW\10-00002-00-SW.dwg 10/15/12 1:47:03 PM

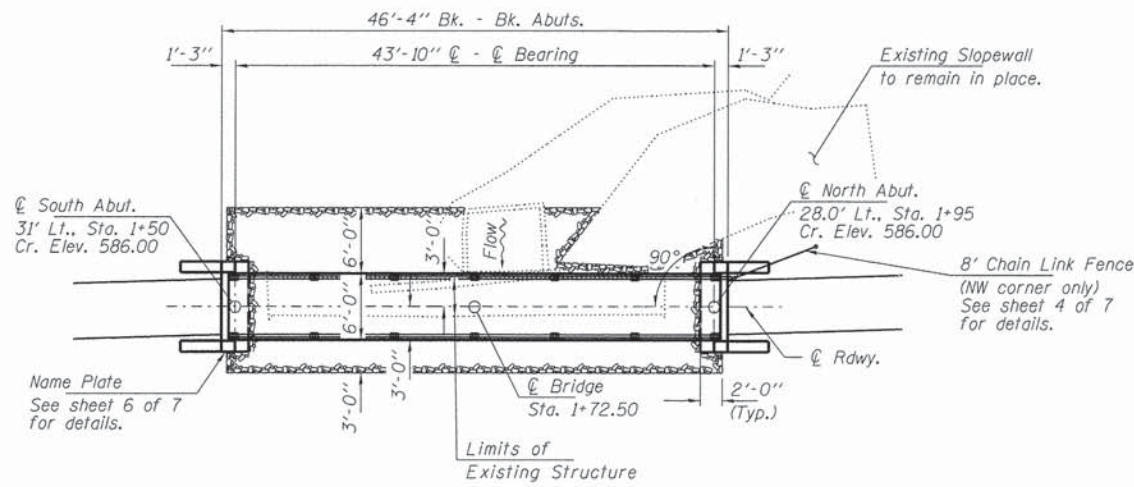
**BENCHMARK:**

**EXISTING STRUCTURE:** Single span steel I-beam pedestrian bridge with timber deck and steel pipe railing on timber abutments. 41' bk.-bk. abutms., 4' wide.

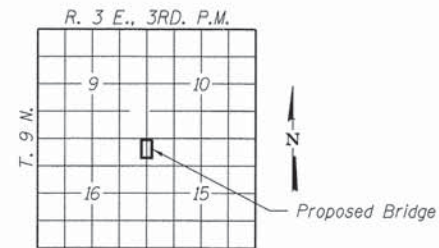
No Salvage



**ELEVATION**



**PLAN**



**LOCATION SKETCH**

**GENERAL NOTES**

- Layout of the slope protection system may be varied to suit ground conditions in the field as directed by the Engineer.
- Reinforcement bars shall conform to the requirements of ASTM A 706 Gr 60. See Special Provisions.
- Excavation required to construct the abutments shall be included in the cost of Concrete Structures. No additional compensation will be allowed for Structure Excavation.
- The Contractor shall use such construction methods and precautions as are necessary to protect the existing highway embankment and roadway.
- Overhead power lines are located above the structure.

**INDEX OF STRUCTURE SHEETS**

1. General Plan & Elevation
2. 17"x36" PPC Deck Beam
3. 17"x36" PPC Deck Beam Details
4. Superstructure Details
5. Bicycle Railing
6. Abutments
7. Borings

BUILT 2011 BY  
VILLAGE OF COWDEN  
SEC. 10-00002-00-SW  
STR. NO. 087-6005  
LOADING-2009 LRFD PEDESTRIAN

**NAME PLATE**  
See Std. 515001

**DESIGN STRESSES**

**FIELD UNITS**

$f'_c = 3,500$  psi  
 $f_y = 60,000$  psi (Reinf.)

**PRECAST PRESTRESSED UNITS**

$f'_c = 6,000$  psi  
 $f'_{ci} = 5,000$  psi  
 $f_{pu} = 270,000$  psi ( $\frac{1}{2}$ "  $\phi$  low lax. strands)  
 $f_{pbt} = 201,960$  psi ( $\frac{1}{2}$ "  $\phi$  low lax. strands)  
 $f_y = 60,000$  psi (Reinf.)

**DESIGN SPECIFICATIONS**

2009 LRFD Guide Specifications for the Design of Pedestrian Bridges with all applicable interims.  
90 psf Pedestrian Loading and 10,000 lb. Emergency Vehicle.

**SEISMIC DATA**

Seismic Performance Zone (SPZ) = 1  
Design Spectral Acceleration at 1.0 sec. ( $S_{D1}$ ) = 0.141g  
Design Spectral Acceleration at 0.2 sec. ( $S_{D5}$ ) = 0.328g  
Soil Site Class = C

I certify that to the best of my knowledge, information and belief, this bridge design is structurally adequate for the design loading shown on the plans. The design is an economical one for the style of structure and complies with requirements of the current "AASHTO LRFD Specifications."

*Michael G. Berry* 01/13/2014  
ILLINOIS STRUCTURAL NO. 081-4622



Expires 11-30-2014

**TOTAL BILL OF MATERIAL**

| ITEM  | UNIT    | SUPER | SUB   | TOTAL |
|---|---------|-------|-------|-------|
| Stone Dumped Riprap, Class B4                       | Sq. Yd. |       |       | 65    |
| Removal of Existing Structures                      | Each    |       |       | 1     |
| Concrete Structures                                 | Cu. Yd. |       | 13.7  | 13.7  |
| Precast Prestressed Concrete Deck Beams (17" Depth) | Sq. Ft. | 270   |       | 270   |
| Reinforcement Bars                                  | Pound   |       | 1,290 | 1,290 |
| Bicycle Railing                                     | Foot    | 90    |       | 90    |
| Name Plates   | Each    |       | 1     | 1     |
| Chain Link Fence, 4'                                | Foot    | 8     |       | 8     |

FILE NAME = 110254-sht-brdgn.dgn  
HAMPTON, LENZINI AND RENWICK, INC.  
3040 STEVENSON DRIVE, SUITE 201  
SPRINGFIELD, ILLINOIS 62703  
ILLINOIS PROFESSIONAL DESIGN FIRM  
L.E./P.E./S.E. CORP. 184.00599

JOHN H. CRAWFORD & ASSOCIATES, P.C.  
CIVIL ENGINEERS, LAND SURVEYORS  
200 NORTH WASHINGTON, CHICAGO, ILLINOIS 60610  
PHONE (312) 980-4370 FAX (312) 980-4492  
WWW.JHCRAWFORD.COM

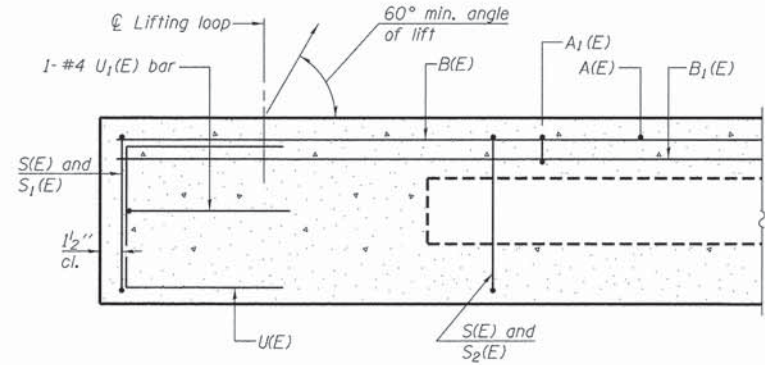
|                   |           |
|-------------------|-----------|
| DESIGNED - M.G.B. | REVISED - |
| CHECKED - S.W.M.  | REVISED - |
| DRAWN - D.A.B.    | REVISED - |
| CHECKED - S.W.M.  | REVISED - |

STATE OF ILLINOIS  
VILLAGE OF COWDEN

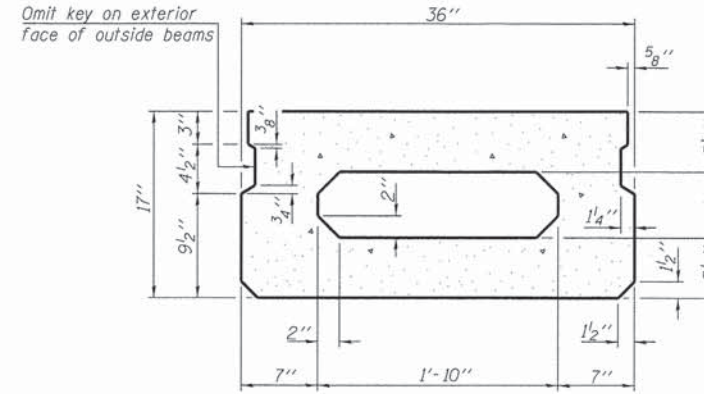
GENERAL PLAN & ELEVATION  
STRUCTURE NO. 087-6005

SHEET NO. 1 OF 7 SHEETS

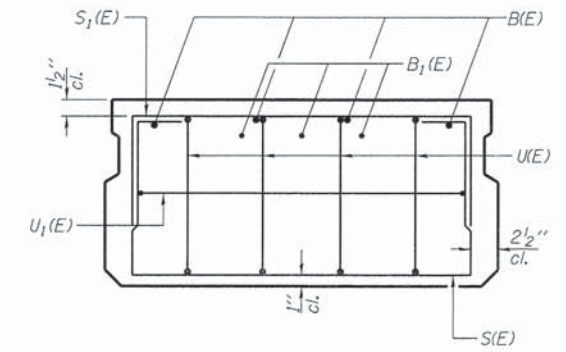
| IL                        | SECTION        | COUNTY | TOTAL SHEETS | SHEET NO. |
|---------------------------|----------------|--------|--------------|-----------|
| 128                       | 10-00002-00-SW | SHELBY | 13           | 5         |
| SAFE ROUTES TO SCHOOL     |                |        | CONTRACT NO. |           |
| ILLINOIS FED. AID PROJECT |                |        |              |           |



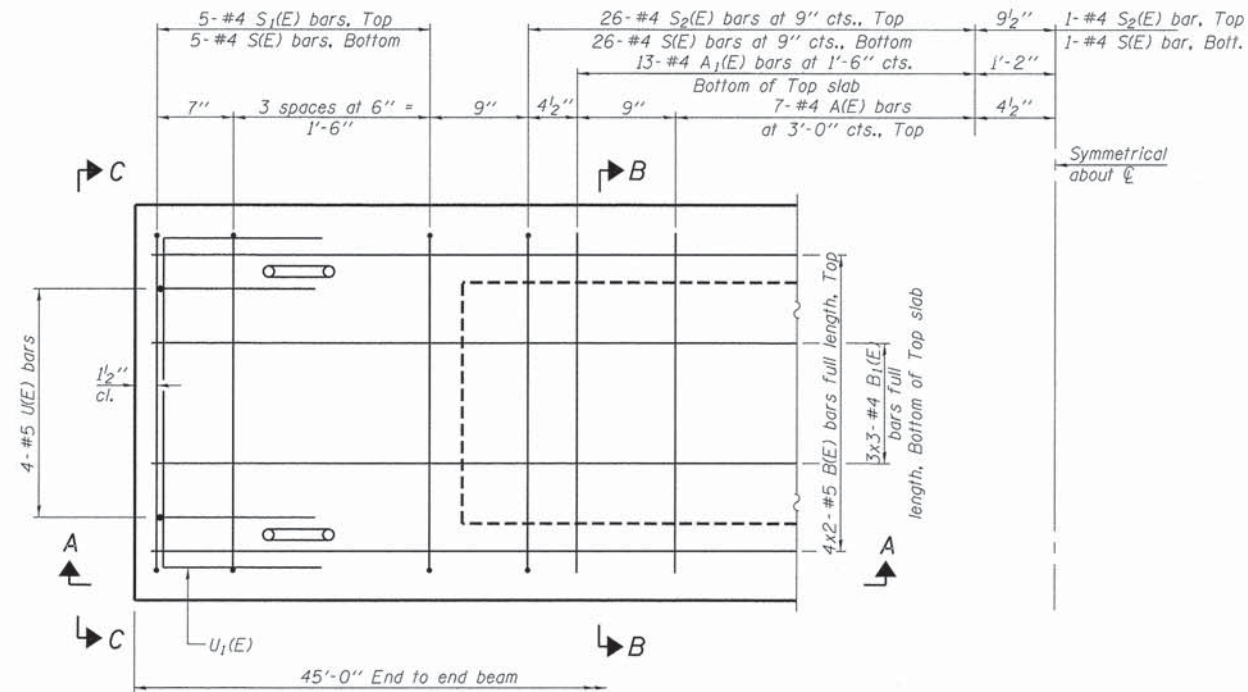
SECTION A-A



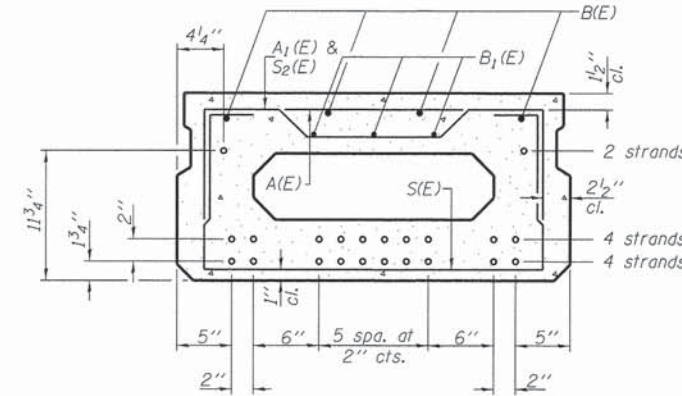
SECTION B-B  
(Showing dimensions)



VIEW C-C



PLAN VIEW



SECTION B-B  
(Showing reinforcement and permissible strand locations)

Note: Place the number of strands specified in each row symmetrically about the centerline of beam in the permissible strand locations shown.

BAR LIST  
ONE BEAM ONLY  
(For information only)

| Bar   | No. | Size | Length | Shape |
|-------|-----|------|--------|-------|
| A(E)  | 13  | #4   | 2'-7"  | —     |
| A1(E) | 26  | #4   | 2'-10" | —     |
| B(E)  | 8   | #5   | 23'-8" | —     |
| B1(E) | 9   | #4   | 16'-3" | —     |
| S(E)  | 63  | #4   | 5'-9"  | □     |
| S1(E) | 10  | #4   | 4'-3"  | □     |
| S2(E) | 53  | #4   | 4'-6"  | □     |
| U(E)  | 8   | #5   | 3'-8"  | □     |
| U1(E) | 2   | #4   | 5'-0"  | □     |

Note: See sheets 3 & 4 of 7 for additional details and Bill of Material.

Notes:  
Spacing of S(E) and S2(E) bars may be adjusted up to 4" in the immediate area of the transverse tie diaphragms to miss the block outs for the transverse ties.  
Bars indicated thus 4x2-#5 etc. indicates 4 lines of bars with 2 lengths per line.

MINIMUM BAR LAP  
#4 bar = 2'-0"  
#5 bar = 2'-6"

PD-1736-0

7-1-10

FILE NAME = 110854-sht-brIDGE.dgn  
HAMPTON, LENZINI AND RENWICK, INC.  
300 STEVENSON DRIVE, SUITE 301  
SPRINGFIELD, ILLINOIS 62703  
ILLINOIS PROFESSIONAL DESIGN FIRM  
L.S. / P.E. / S.E. COMP. 184.000669



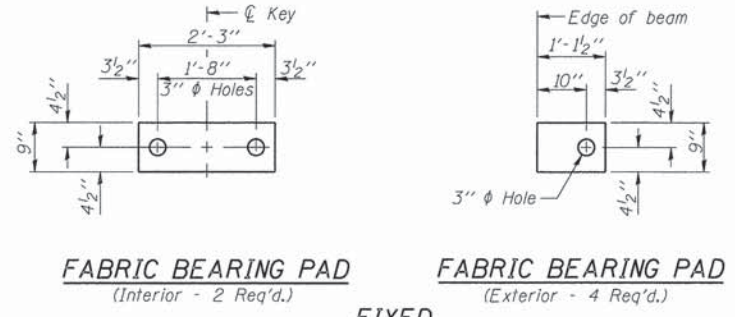
JOHN H. CRAWFORD & ASSOCIATES, P.C.  
CIVIL ENGINEERS, LAND SURVEYORS  
301 SOUTH SPRING, CARLETON, ILLINOIS 62010  
PHONE (618) 462-8170 FAX (618) 462-4922  
MARKING STRUCTURES AND UTILITIES SINCE 1970

|            |        |           |  |
|------------|--------|-----------|--|
| DESIGNED - | M.G.B. | REVISED - |  |
| CHECKED -  | S.W.M. | REVISED - |  |
| DRAWN -    | D.A.B. | REVISED - |  |
| CHECKED -  | S.W.M. | REVISED - |  |

STATE OF ILLINOIS  
VILLAGE OF COWDEN

17" x 36" PPC DECK BEAM  
STRUCTURE NO. 087-6005  
SHEET NO. 2 OF 7 SHEETS

| IL                        | SECTION        | COUNTY | TOTAL SHEETS | SHEET NO. |
|---------------------------|----------------|--------|--------------|-----------|
| 128                       | 10-00002-00-SW | SHELBY | 13           | 6         |
| SAFE ROUTES TO SCHOOL     |                |        | CONTRACT NO. |           |
| ILLINOIS FED. AID PROJECT |                |        |              |           |

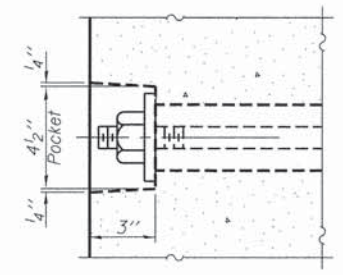


**FABRIC BEARING PAD**  
(Interior - 2 Req'd.)

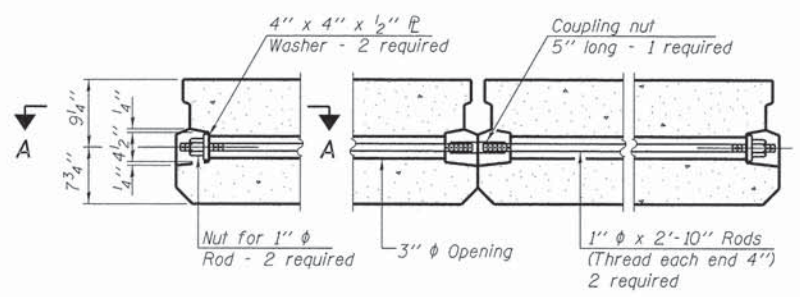
**FABRIC BEARING PAD**  
(Exterior - 4 Req'd.)

**FIXED**

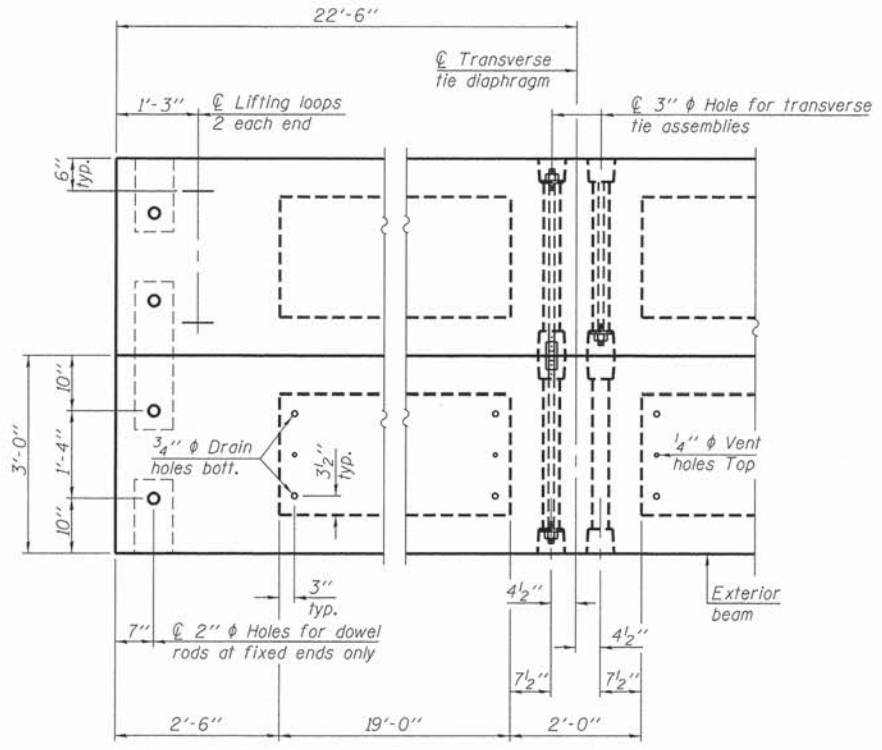
Notes:  
All bearing pads shall be 1" thick.  
Omit holes when using expansion bearings.  
Expansion bearing pad shall be bonded to the substructure.



**SECTION A-A**

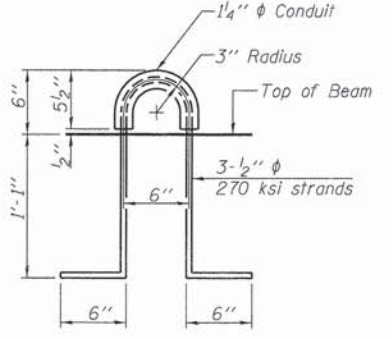
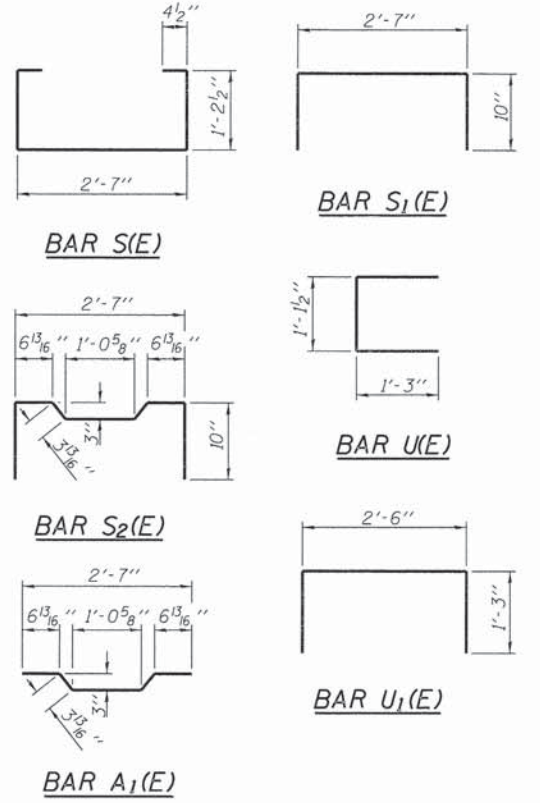


**TYPICAL TRANSVERSE TIE ASSEMBLY**



**PLAN VIEW**

Note: Connect beams in pairs with the transverse tie configuration shown.



**LIFTING LOOP DETAIL**

**NOTES**

Prestressing steel shall be uncoated high strength, low relaxation 7-wire strand, Grade 270. The nominal diameter shall be 1/2" and the nominal cross-sectional area shall be 0.153 sq. in. The 1" rods in the transverse tie assembly shall be tightened to a snug fit and the threads set. Pockets on exterior faces of bridge shall be filled with grout after transverse tie assembly is in place.  
Reinforcement bars shall conform to ASTM A 706, Grade 60. (See Special Provisions).  
Two 1/8" fabric adjusting shims of the dimensions of the exterior bearing pad shall be provided for each bearing pad location.  
A minimum 2 1/2" lifting pin shall be used to engage the lifting loops during handling.  
Corrosion inhibitor, per Article 1020.05(b)(12) and 1021.06 of the Standard Specifications, shall be used in the concrete for precast prestressed concrete deck beams.  
Compressive strength of prestressed concrete, f'c, shall be 6000 psi.  
Compressive strength of prestressed concrete at release, f'ci, shall be 5000 psi.  
All bars shall be epoxy coated.

**BILL OF MATERIAL**

|   |         |     |
|---|---------|-----|
| Precast Prestressed Conc. Deck Bms. (17" depth) | Sq. Ft. | 270 |
|---|---------|-----|

PD-1736-OD 7-1-10

FILE NAME: 110054-sht-bridge.dgn  
**HAMPTON, LENZINI AND RENWICK, INC.**  
 3000 STEVENSON DRIVE, SUITE 201  
 SPRINGFIELD, ILLINOIS 62773  
 ILLINOIS PROFESSIONAL DESIGN FIRM  
 L.S. / P.E. / S.E. CORP. 194 020959

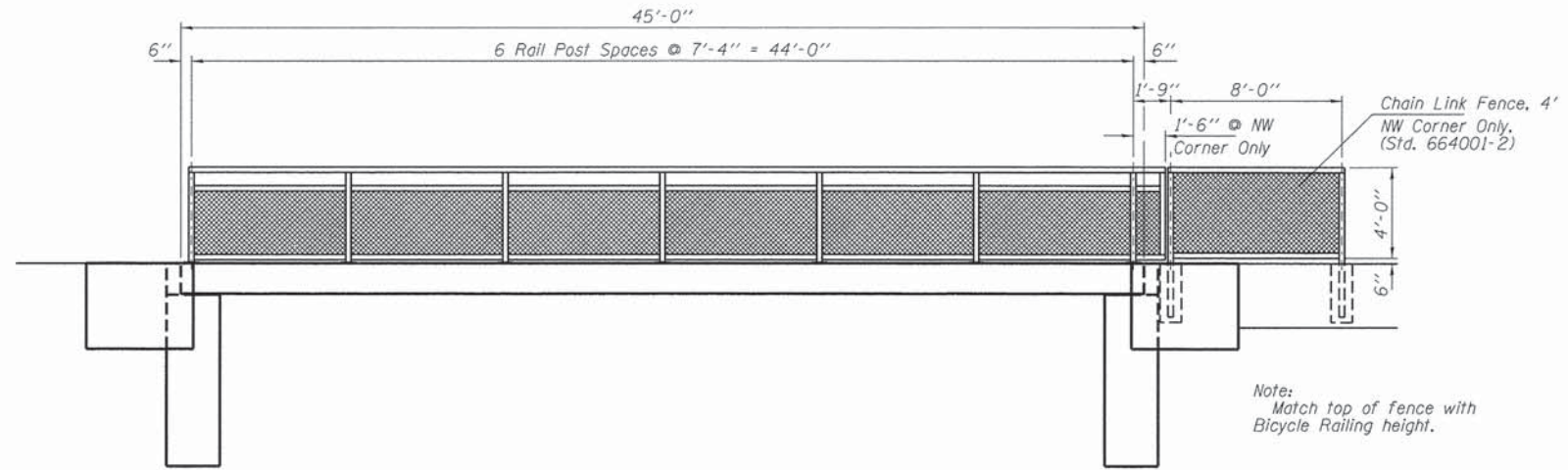
**JOHN H. CRAWFORD & ASSOCIATES, P.C.**  
 CIVIL ENGINEERS, LAND SURVEYORS  
 200 SOUTH WASHINGTON, CHICAGO, ILLINOIS 60604  
 PHONE (312) 980-0270 FAX (312) 980-4162  
 WWW.JHCRAWFORD.COM

|                   |           |
|-------------------|-----------|
| DESIGNED - M.G.B. | REVISED - |
| CHECKED - S.W.M.  | REVISED - |
| DRAWN - D.A.B.    | REVISED - |
| CHECKED - S.W.M.  | REVISED - |

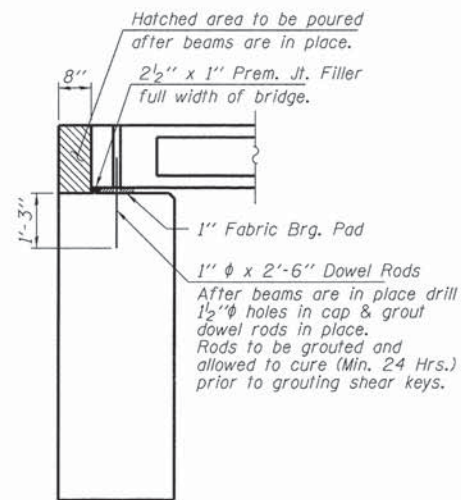
**STATE OF ILLINOIS**  
**VILLAGE OF COWDEN**

**17" x 36" PPC DECK BEAM DETAILS**  
**STRUCTURE NO. 087-6005**  
 SHEET NO. 3 OF 7 SHEETS

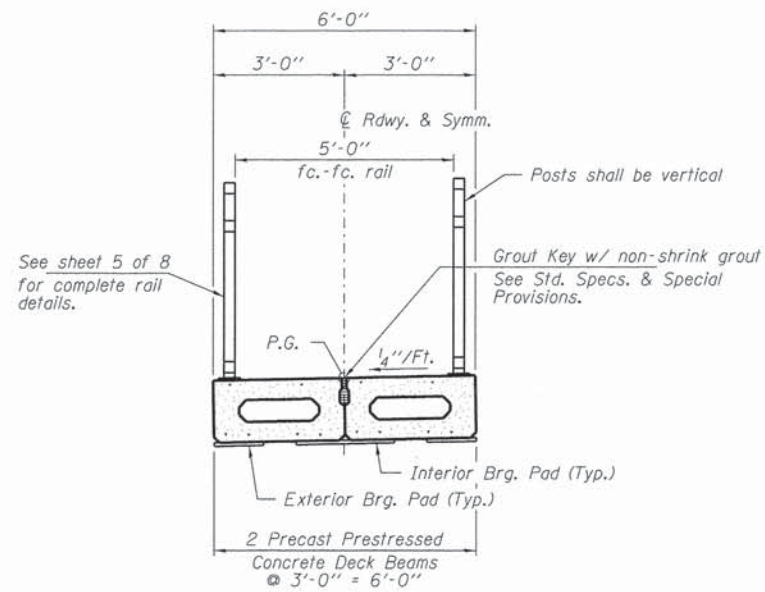
|                           |                |        |              |           |
|---------------------------|----------------|--------|--------------|-----------|
| IL                        | SECTION        | COUNTY | TOTAL SHEETS | SHEET NO. |
| 128                       | 10-00002-00-SW | SHELBY | 13           | 7         |
| SAFE ROUTES TO SCHOOL     |                |        | CONTRACT NO. |           |
| ILLINOIS FED. AID PROJECT |                |        |              |           |



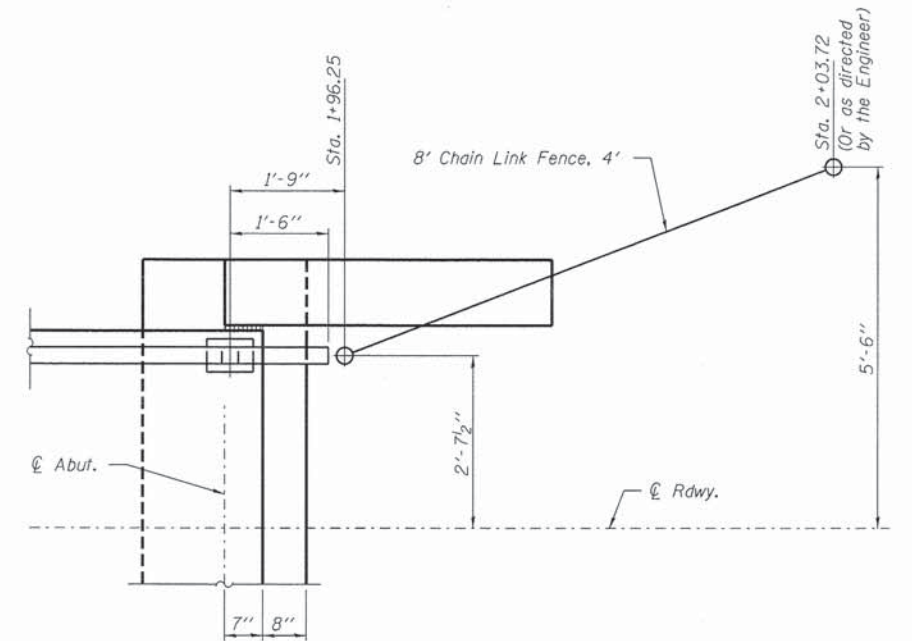
**ELEVATION**  
Showing Rail Post Spaces  
See sheet 5 of 8 for Railing Details.



**SECTION AT ABUTMENTS**  
@ Rt. L's



**CROSS SECTION**  
See sheets 2 & 3 of 8 for Superstructure.  
(Looking North)



**PLAN**  
(@ NW corner only)

FILE NAME = 110954-shr-bridge.dgn  
HAMPTON, LENZINI AND RENWICK, INC.  
3035 STEVENSON DRIVE, SUITE 707  
SPRINGFIELD, ILLINOIS 62703  
ILLINOIS PROFESSIONAL DESIGN FIRM  
L2 1 PE 1 SE CORP. 184-000999



JOHN H. CRAWFORD  
& ASSOCIATES, P.C.  
CIVIL ENGINEERS, LAND SURVEYORS  
201 SOUTH OGDON, CARROLLVILLE, ILLINOIS 62930  
PHONE: (618) 945-6375 FAX: (618) 945-6922  
SERVING CUSTOMERS ACROSS CENTRAL ILLINOIS SINCE 1973

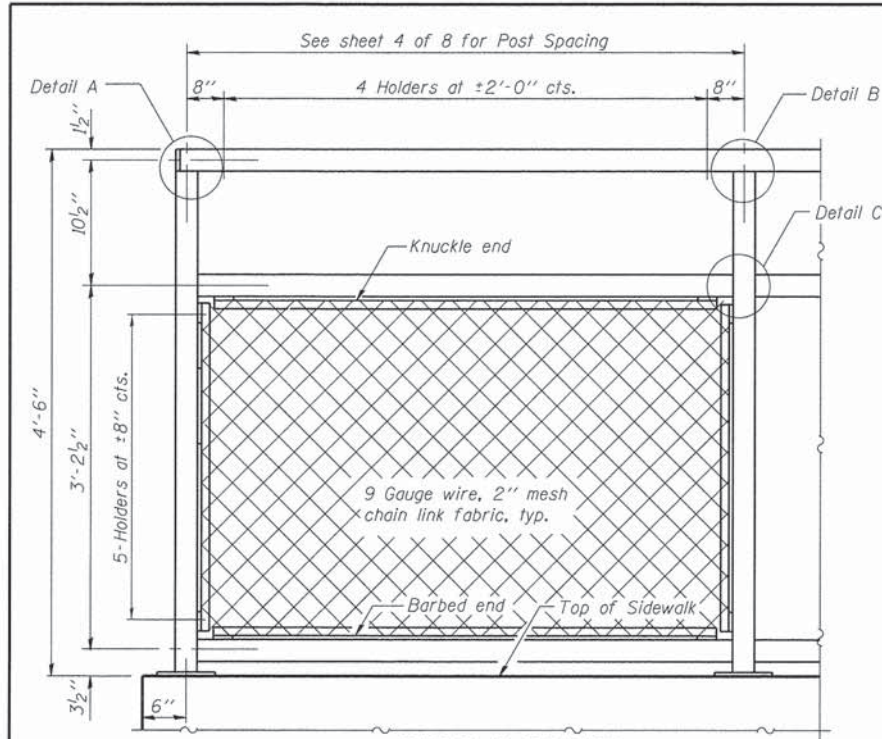
|                   |           |
|-------------------|-----------|
| DESIGNED - M.G.B. | REVISED - |
| CHECKED - S.W.M.  | REVISED - |
| DRAWN - D.A.B.    | REVISED - |
| CHECKED - S.W.M.  | REVISED - |

STATE OF ILLINOIS  
VILLAGE OF COWDEN

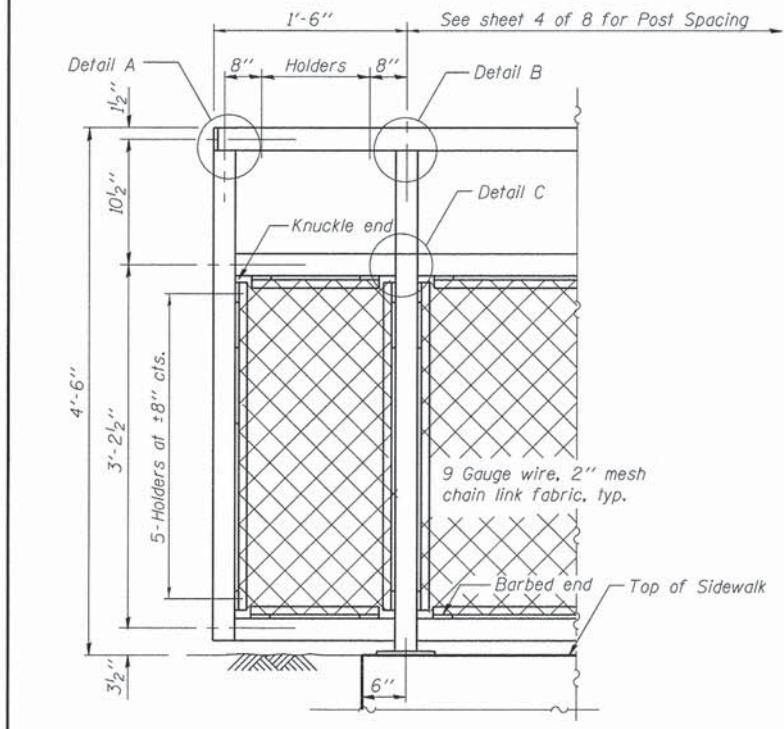
SUPERSTRUCTURE DETAILS  
STRUCTURE NO. 087-6005  
SHEET NO. 4 OF 7 SHEETS

| IL                        | SECTION        | COUNTY | TOTAL SHEETS | SHEET NO. |
|---------------------------|----------------|--------|--------------|-----------|
| 128                       | 10-00002-00-SW | SHELBY | 13           | 8         |
| SAFE ROUTES TO SCHOOL     |                |        | CONTRACT NO. |           |
| ILLINOIS FED. AID PROJECT |                |        |              |           |

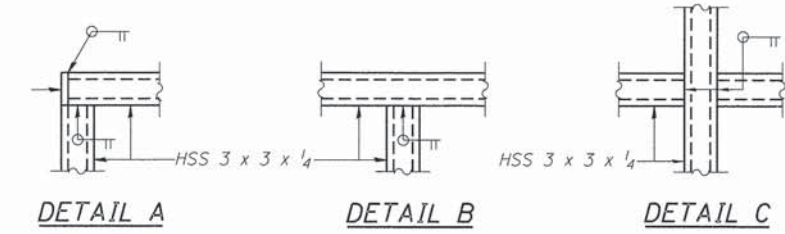




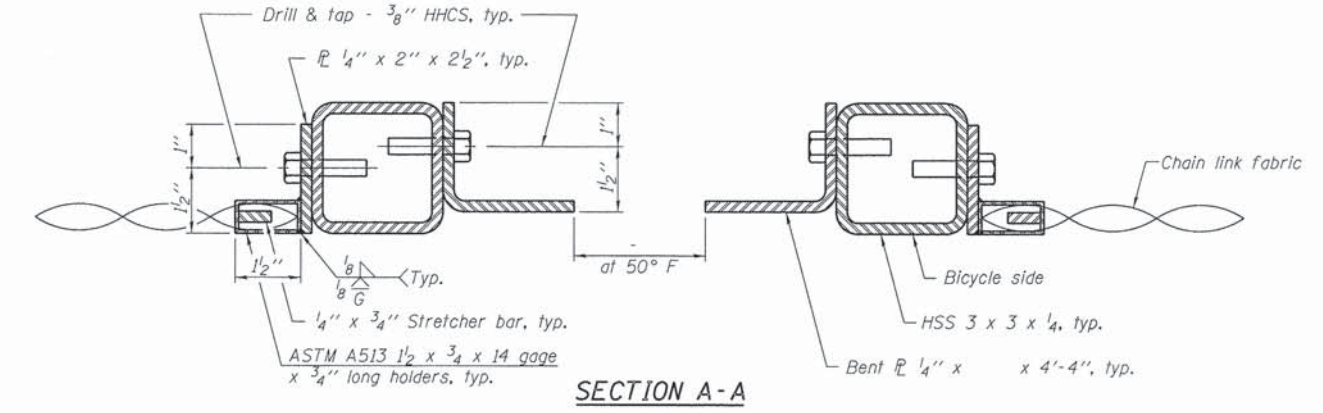
**BICYCLE RAILING**  
(SW, SE & NE corners)



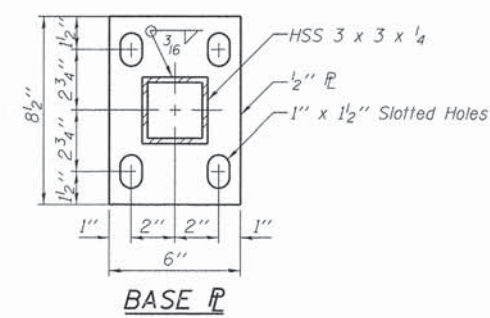
**BICYCLE RAILING**  
(NW corner)



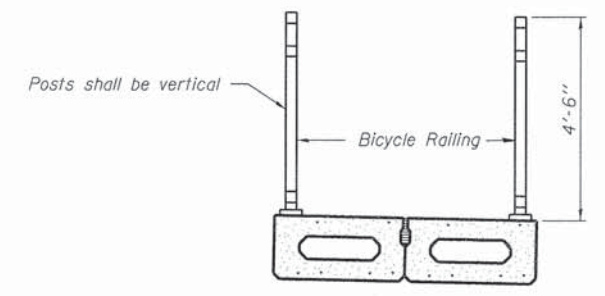
Note:  
All steel rail elements shall be galvanized according to Article 509.05 of the Standard Specifications.



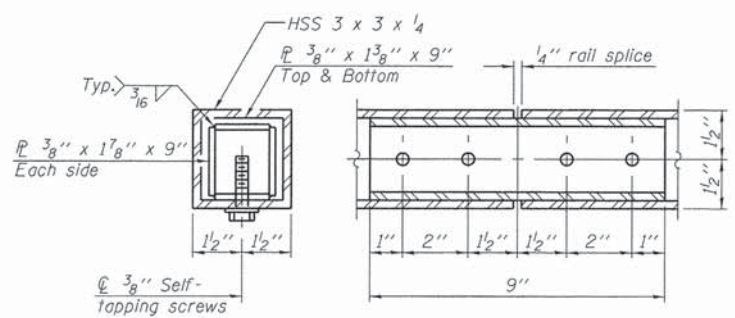
**SECTION A-A**



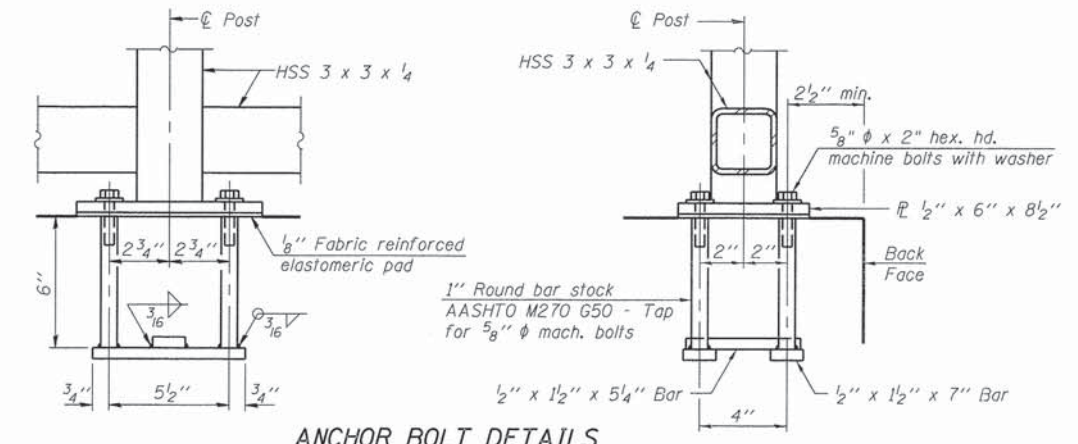
**BASE PL**



**SECTION THRU DECK**



**RAIL SPLICE**



**ANCHOR BOLT DETAILS**

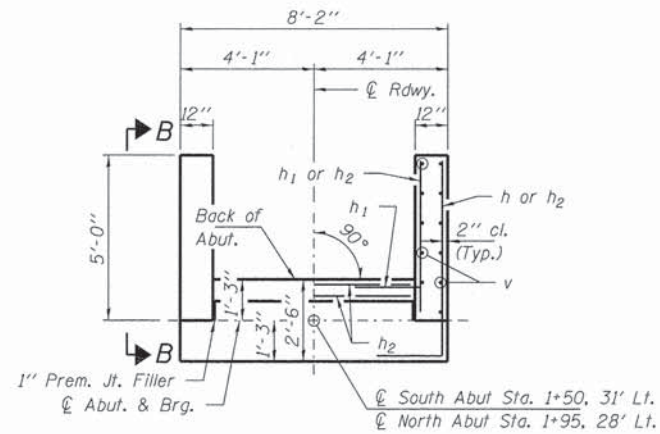
In lieu of the cast-in-place anchor device shown, the Contractor has the option of drilling and setting 5/8" anchor rods according to Article 509.06 of the Standard Specifications. Embedment shall be according to the manufacturer's specifications.

**BILL OF MATERIAL**

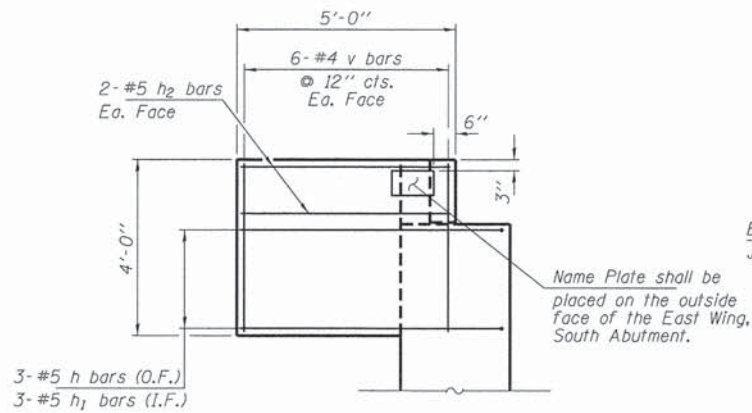
| Item            | Unit | Quantity |
|-----------------|------|----------|
| Bicycle Railing | Foot | 90       |

(10'-0" Maximum Post Spacing)

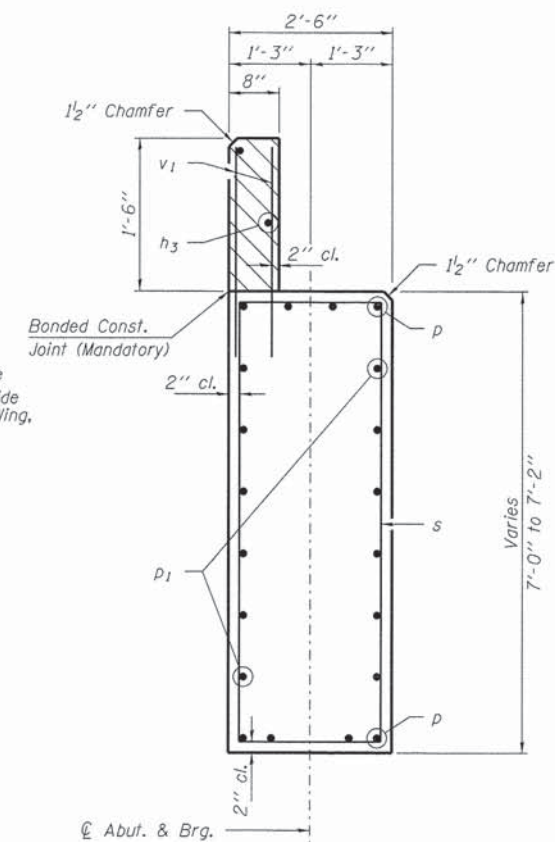
|   |   |                   |           |  |  |                                    |                |        |              |           |
|---|---|-------------------|-----------|--|--|------------------------------------|----------------|--------|--------------|-----------|
| FILE NAME: 110854-sht-bridge.dgn<br><b>HAMPTON, LENZINI AND RENWICK, INC.</b><br>206 STEVENSON DRIVE, SUITE 201<br>SPRINGFIELD, ILLINOIS 62703<br>ILLINOIS PROFESSIONAL DESIGN FIRM<br>L.L. / S.E. CORP. 184.020509 | <b>JOHN H. CRAWFORD &amp; ASSOCIATES, P.C.</b><br>CIVIL ENGINEERING AND SURVEYORS<br>501 SOUTH OGDEN, CARLETON, ILLINOIS 62426<br>PHONE: 618-399-9275 FAX: 618-399-4582<br>SERVING NORTHERN AND CENTRAL ILLINOIS SINCE 1973 | DESIGNED - M.G.B. | REVISED - | <b>STATE OF ILLINOIS</b><br><b>VILLAGE OF COWDEN</b> | <b>BICYCLE RAILING</b><br><b>STRUCTURE NO. 087-6005</b><br>SHEET NO. 5 OF 7 SHEETS | IL                                 | SECTION        | COUNTY | TOTAL SHEETS | SHEET NO. |
|   |   | CHECKED - S.W.M.  | REVISED - |  |  | 128                                | 10-00002-00-SW | SHELBY | 13           | 9         |
|   |   | DRAWN - D.A.B.    | REVISED - |  |  | SAFE ROUTES TO SCHOOL CONTRACT NO. |                |        |              |           |
|   |   | CHECKED - S.W.M.  | REVISED - |  |  | ILLINOIS FED. AID PROJECT          |                |        |              |           |



PLAN

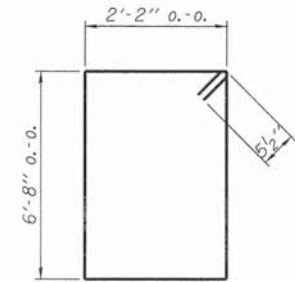


SECTION B-B

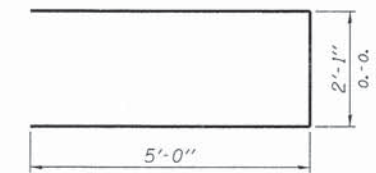


SECTION A-A

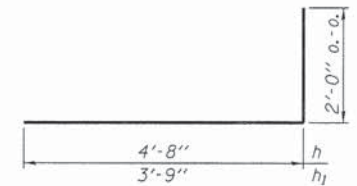
Hatched area to be poured after beams are in place.  
Maximum Soil Pressure under footing = 2.0 T.S.F.



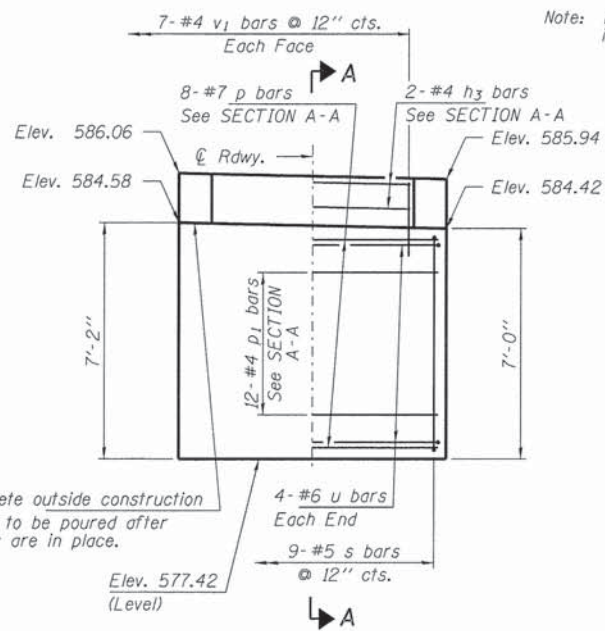
BAR s



BAR u

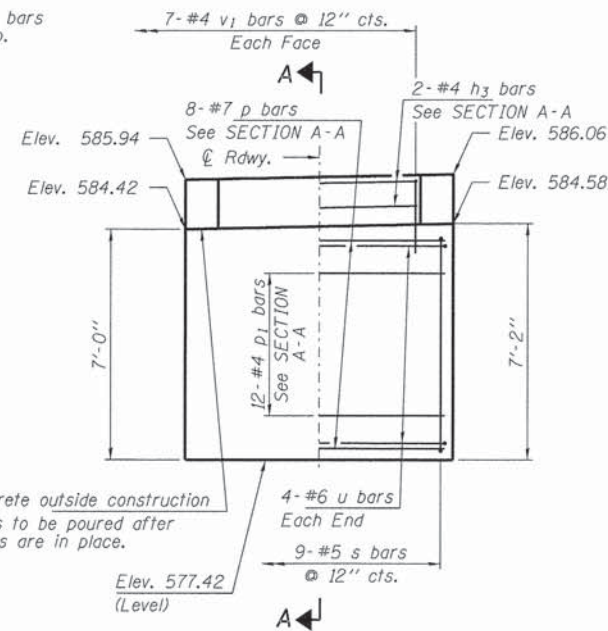


BARS h & h1



ELEVATION - S. ABUT.  
(Looking South)

Note: Extend h and h1 bars into abutment cap.



ELEVATION - N. ABUT.  
(Looking North)

BILL OF MATERIAL - 2 ABUTS.

| BAR                 | NO. | SIZE | LENGTH  | SHAPE |
|---------------------|-----|------|---------|-------|
| h                   | 12  | #4   | 6'-8"   | —     |
| h1                  | 12  | #4   | 5'-9"   | —     |
| h2                  | 16  | #4   | 4'-8"   | —     |
| h3                  | 4   | #4   | 7'-10"  | —     |
| p                   | 16  | #7   | 7'-10"  | —     |
| p1                  | 24  | #4   | 7'-10"  | —     |
| s                   | 18  | #5   | 18'-7"  | □     |
| u                   | 16  | #6   | 12'-1"  | —     |
| v                   | 48  | #4   | 3'-8"   | —     |
| Concrete Structures |     |      | Cu. Yd. | 13.7  |
| Reinforcement Bars  |     |      | Pound   | 1,290 |
| Name Plates         |     |      | Each    | 1     |

FILE NAME = 110054-sht-bridge.dgn  
HAMPTON, LENZINI AND RENWICK, INC.  
3805 STEVENSON DRIVE, SUITE 201  
SPRINGFIELD, ILLINOIS 62703  
ILLINOIS PROFESSIONAL DESIGN FIRM  
L.S. 1/18/15 COMP. 184.000000



JOHN H. CRAWFORD & ASSOCIATES, P.C.  
2001 ENGINEERS LANE, SUITE 200  
301 SOUTH WASHINGTON, CARLEVILLE, ILLINOIS 62630  
PHONE: (618) 995-6170 FAX: (618) 995-6162  
SERVING SOUTHERN AND CENTRAL ILLINOIS SINCE 1970

|            |        |           |  |
|------------|--------|-----------|--|
| DESIGNED - | M.G.B. | REVISED - |  |
| CHECKED -  | S.W.M. | REVISED - |  |
| DRAWN -    | D.A.B. | REVISED - |  |
| CHECKED -  | S.W.M. | REVISED - |  |

STATE OF ILLINOIS  
VILLAGE OF COWDEN

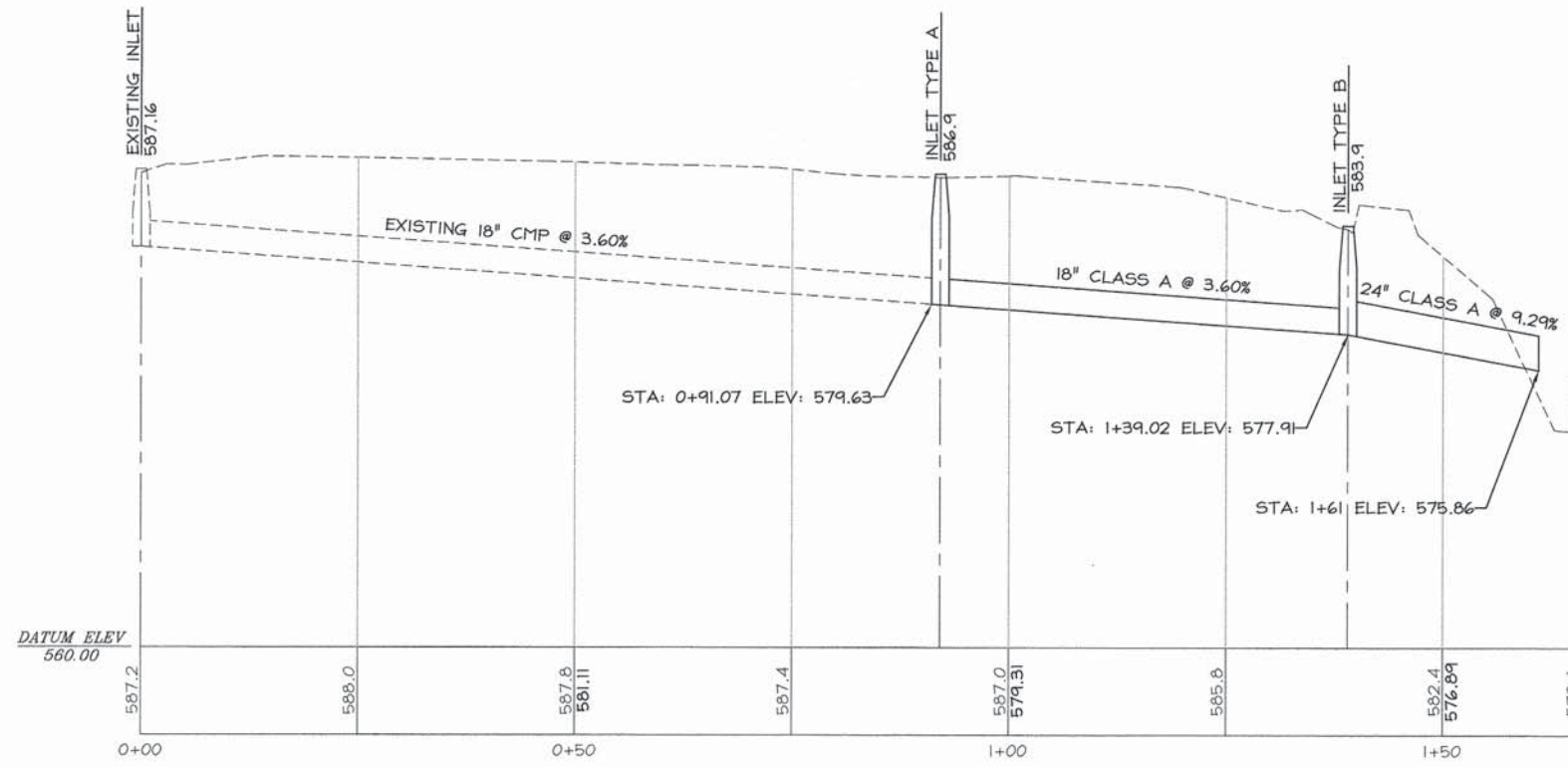
ABUTMENTS  
STRUCTURE NO. 087-6005

SHEET NO. 6 OF 7 SHEETS

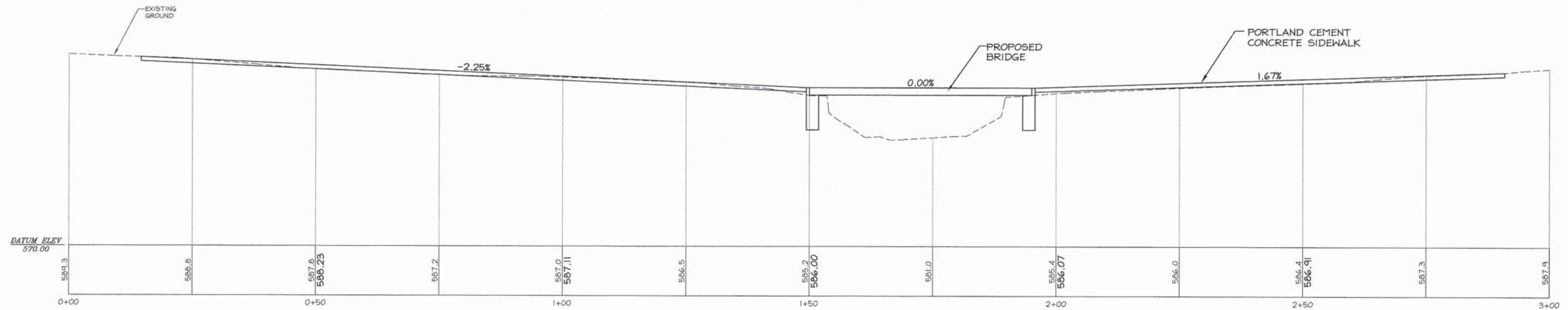
|                           |                |        |              |           |
|---------------------------|----------------|--------|--------------|-----------|
| IL                        | SECTION        | COUNTY | TOTAL SHEETS | SHEET NO. |
| 128                       | 10-00002-00-SW | SHELBY | 13           | 10        |
| SAFE ROUTES TO SCHOOL     |                |        | CONTRACT NO. |           |
| ILLINOIS FED. AID PROJECT |                |        |              |           |



|                   |               |        |              |           |
|-------------------|---------------|--------|--------------|-----------|
| F.A. RTE.         | SECTION       | COUNTY | TOTAL SHEETS | SHEET NO. |
| Hwy 128 # Christy | 10-0002-00-SW | SHELBY | 13           | 12        |



STORM SEWER PROFILE



SIDEWALK PROFILE

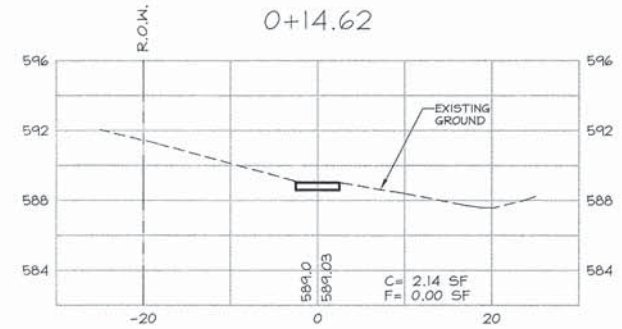
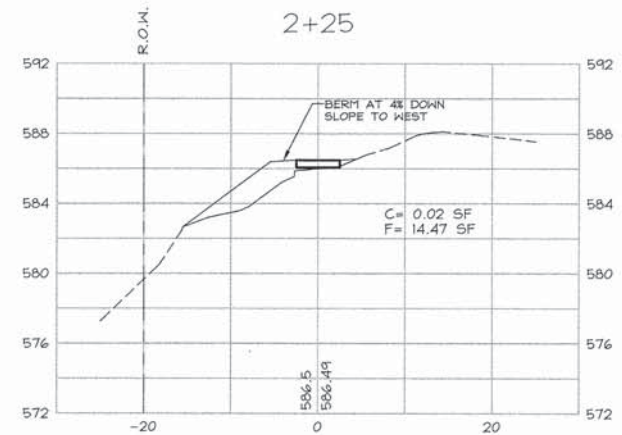
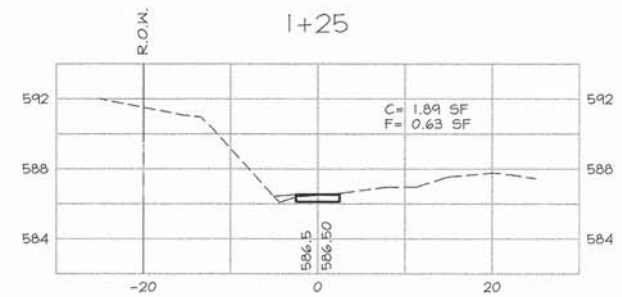
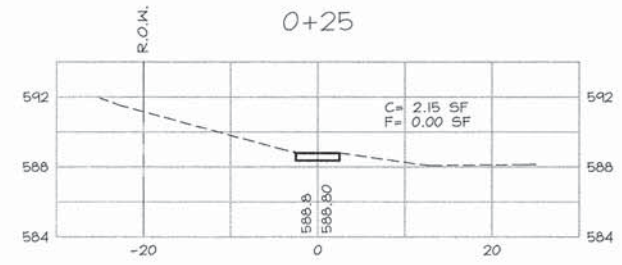
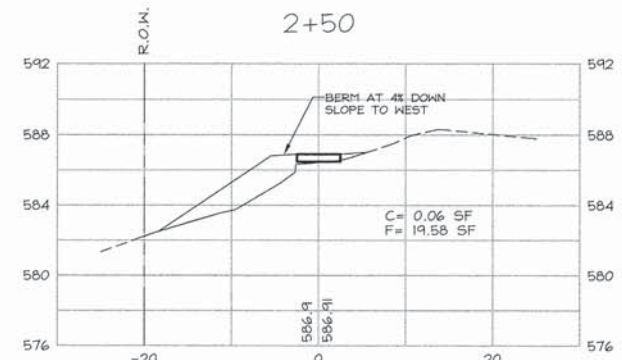
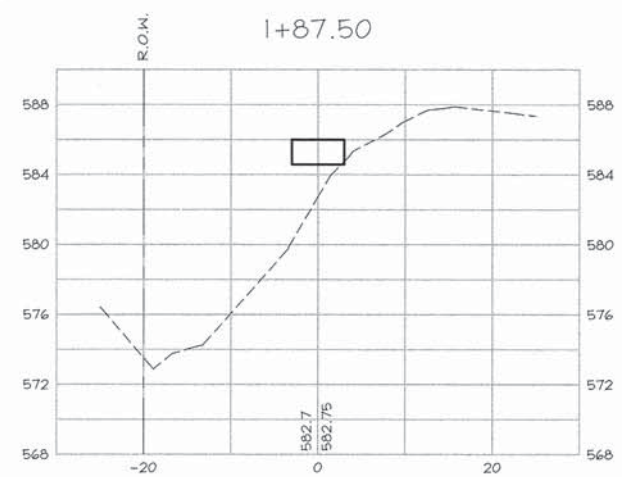
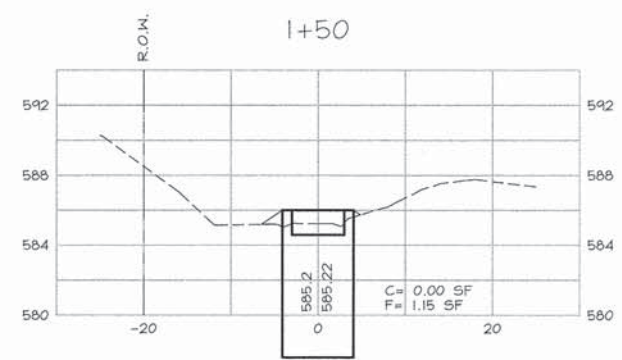
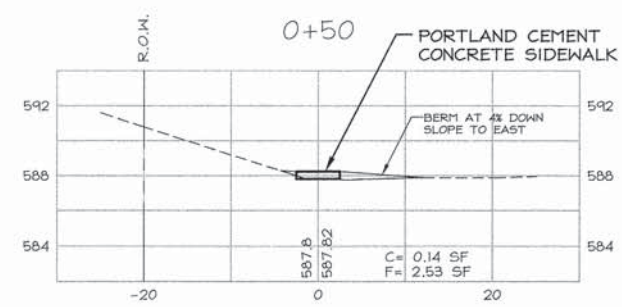
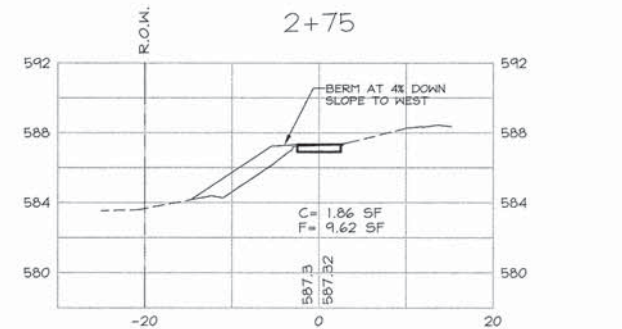
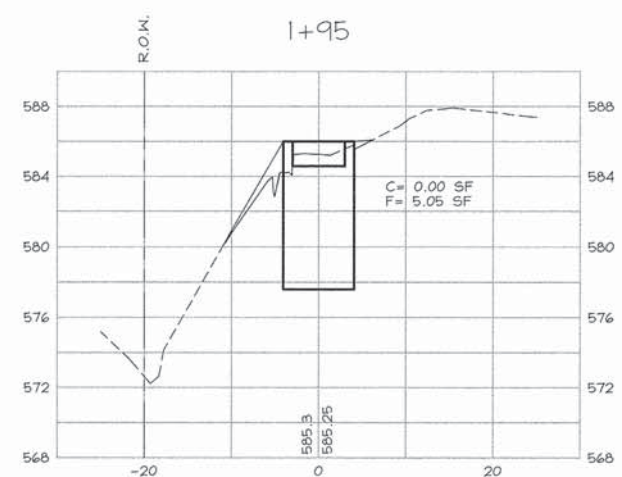
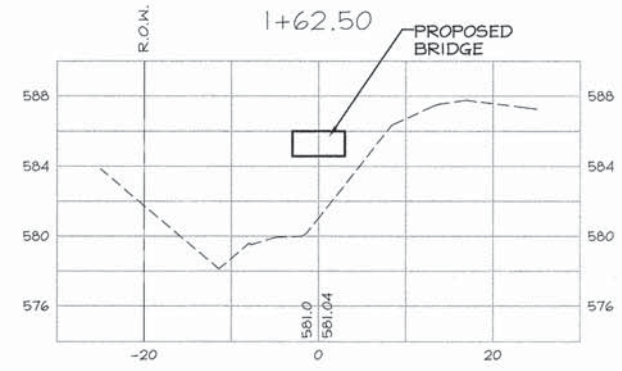
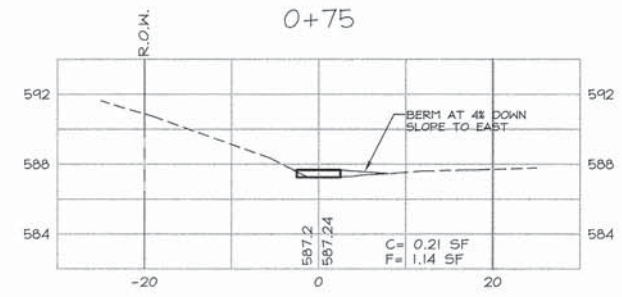
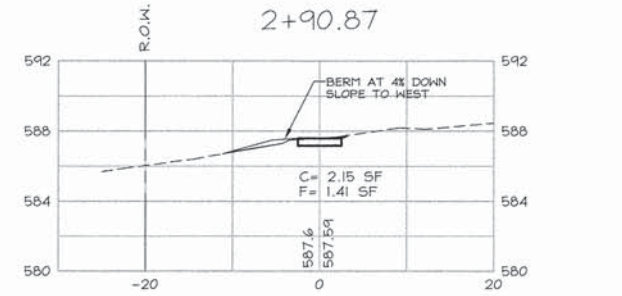
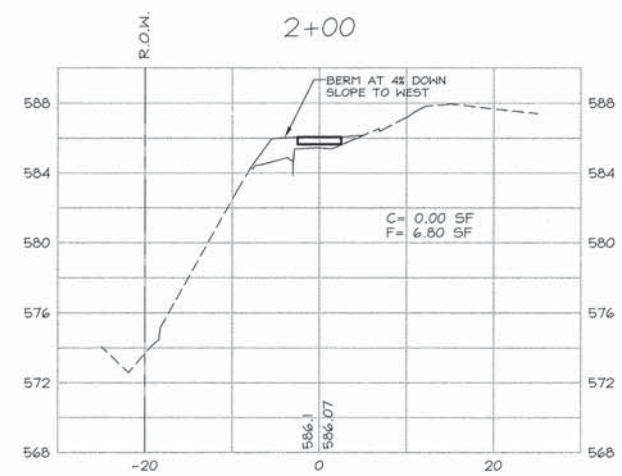
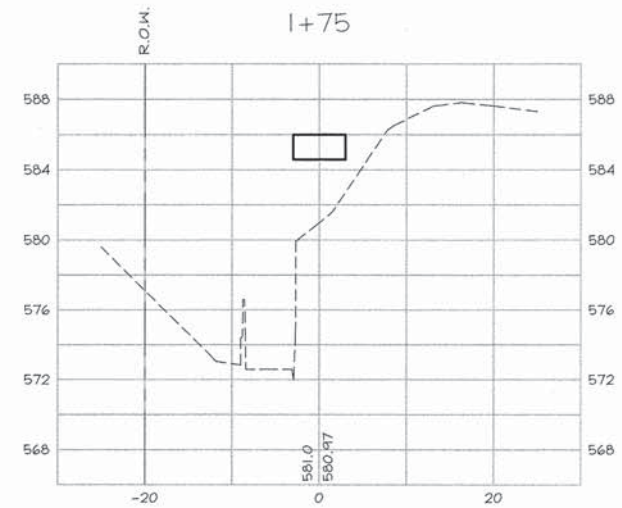
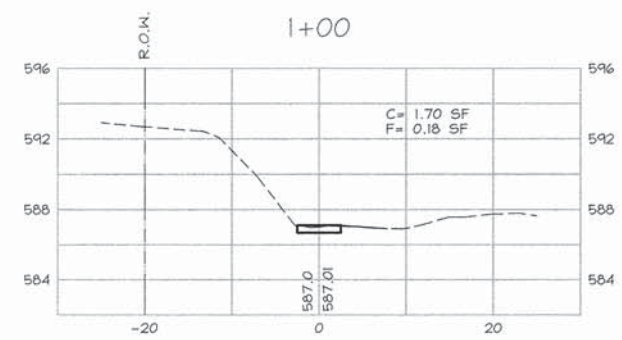
| NO. | DESCRIPTION | BY | DATE | NO. | DESCRIPTION | BY  | DATE     |
|-----|-------------|----|------|-----|-------------|-----|----------|
|     |             |    |      |     | DESIGNED    |     |          |
|     |             |    |      |     | DRAWN       | WFL | 10/15/12 |
|     |             |    |      |     | CHECKED     | JHC | 10/15/12 |

VILLAGE OF COWDEN  
SHELBY COUNTY, IL  
SAFE ROUTES TO SCHOOL  
PROFILES



**JOHN H. CRAWFORD & ASSOCIATES, P.C.**  
CIVIL ENGINEERS, LAND SURVEYORS  
201 SOUTH DIVISION STREET, CARTERSVILLE, ILLINOIS 62919  
PHONE (618) 985-6370 FAX (618) 985-4692  
PROFESSIONAL DESIGN FIRM # 184-002855

|           |          |
|-----------|----------|
| SHEET NO. |          |
| 12        |          |
| ISSUE     | DATE     |
| A         | 10/15/12 |



TOTAL:  
C= 7.60 CY  
F= 48.16 CY

| NO. | DESCRIPTION | BY | DATE | NO. | DESCRIPTION | BY | DATE | NO. | DESCRIPTION | BY  | DATE     |
|-----|-------------|----|------|-----|-------------|----|------|-----|-------------|-----|----------|
|     |             |    |      |     |             |    |      |     | DESIGNED    |     |          |
|     |             |    |      |     |             |    |      |     | DRAWN       | WFL | 10/15/12 |
|     |             |    |      |     |             |    |      |     | CHECKED     | JHC | 10/15/12 |

VILLAGE OF COWDEN  
SHELBY COUNTY, IL  
SAFE ROUTES TO SCHOOL  
SIDEWALK SECTIONS

**JOHN H. CRAWFORD & ASSOCIATES, P.C.**  
CIVIL ENGINEERS, LAND SURVEYORS  
201 SOUTH DIVISION STREET, CARTERVILLE, ILLINOIS 62918  
PHONE (618) 965-6370 FAX (618) 965-4692  
PROFESSIONAL DESIGN FIRM # 184-002885

|           |          |
|-----------|----------|
| SHEET NO. |          |
| 13        |          |
| ISSUE     | DATE     |
| A         | 10/15/12 |