

04-25-14 LETTING ITEM 097

STATE OF ILLINOIS
 DEPARTMENT OF TRANSPORTATION
 DIVISION OF HIGHWAYS
 PLANS FOR PROPOSED
 SURFACE TRANSPORTATION RURAL PROJECT

ROUTE	SECTION	COUNTY	TOTAL SHEETS	SHEET NO.
C.H. 11	12-00122-00-FP	JASPER	2	1
CONTRACT NO. 95732		ILLINOIS	PROJECT: RS-0079(149)	

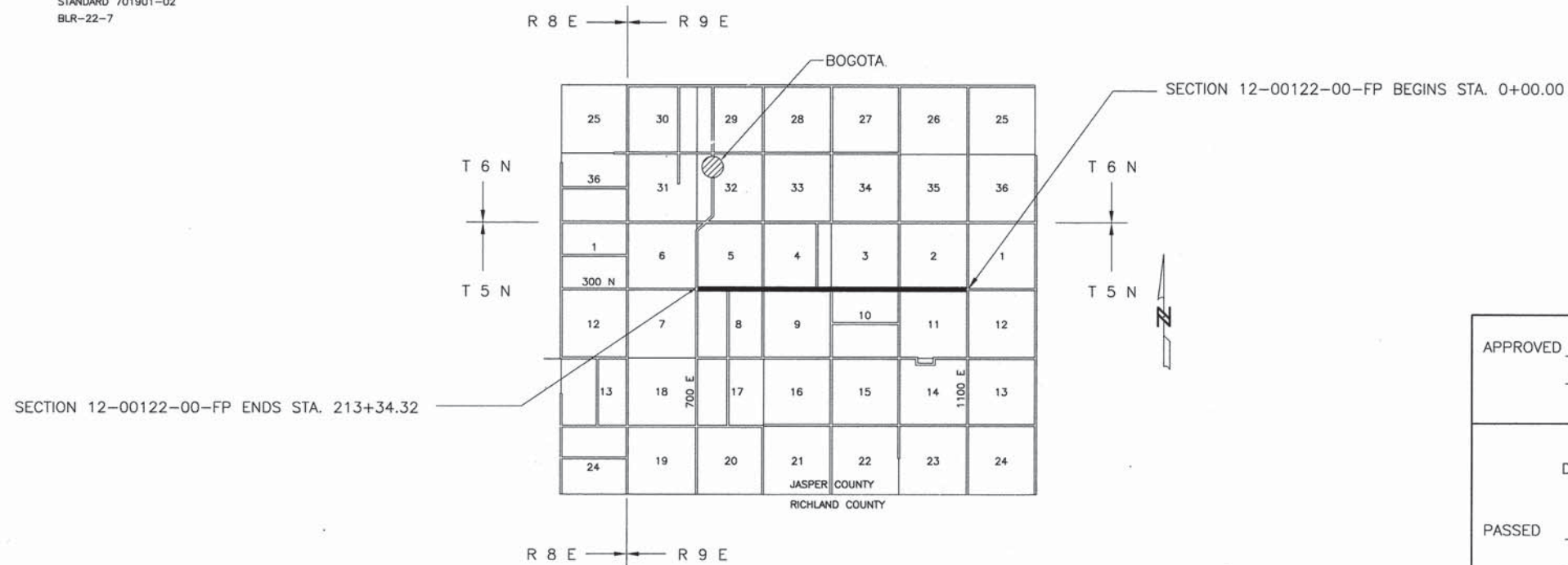
JASPER COUNTY
 SECTION 12-00122-00-FP
 COUNTY HIGHWAY 11
 JOB NO. C-97-041-13
 PROJECT NO. RS-0079(149)

THESE PLANS WERE PREPARED BY ME, OR A FULL TIME MEMBER OF MY STAFF, WORKING UNDER MY PERSONAL SUPERVISION.

Robala Patten
 ILLINOIS REG. PROF. ENG. 38893
 LICENSE EXPIRES 11/30/15
 12871 EAST STATE HWY 33
 NEWTON, ILLINOIS 62448
 PHONE 618-783-2915



INDEX OF SHEETS	
SHEET	ITEM
1	COVER SHEET
2	SUMMARY OF QUANTITIES STANDARD 00001-06 STANDARD 701901-02 BLR-22-7



RURAL MINOR COLLECTOR
 ADT = 250
 DESIGN SPEED = 40 MPH

CONTRACT NO. 95732

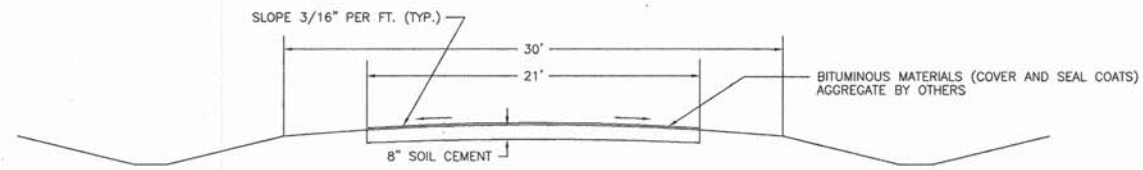
Joint Utility Locating Information for Excavators
 JULIE 1-800-892-0123

NET LENGTH SECTION 12-00122-00-FP = 21,334.32 Ft. = 4.041 Mi.

APPROVED	<u>1-30</u> 20 <u>14</u>
	<i>Robala Patten</i> COUNTY ENGINEER
PASSED	<u>2-19</u> 20 <u>14</u>
	<i>Manuel Cortez</i> DISTRICT SEVEN ENGINEER OF LOCAL ROADS AND STREETS
Releasing For Bid Based on Limited Review	<u>2-19</u> 20 <u>14</u>
	<i>Robert L. Anshel</i> DEPUTY DIRECTOR OF HIGHWAYS REGION FOUR ENGINEER

ROUTE	SECTION	COUNTY	TOTAL SHEETS	SHEET NO.
C.H. 11	12-00122-00-FP	JASPER	2	2
CONTRACT NO. 95732		ILLINOIS	PROJECT RS-0079(149)	

TYPICAL SECTION OF PROPOSED IMPROVEMENT

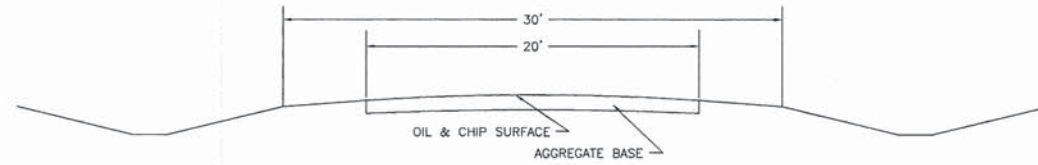


STA. 0+00.0 TO STA. 213+34.32

PAVEMENT DESIGN DATA

CLASS IV ROAD
 STRUCTURAL DESIGN TRAFFIC (S.D.T.) 2034 PC = 210
 SU = 20
 MU = 20
 MINIMUM SOIL SUPPORT: I.B.U. = 3
 PERCENT OF S.D.T. IN TRAFFIC LANE: P = 50%
 S = 50%
 M = 50%
 TRAFFIC FACTOR = 0.018
 STRUCTURAL NUMBER = 2.40
 PAVEMENT STRUCTURE MATERIALS:
 STAGE 1 - 8" SOIL-CEMENT BASE COURSE (500 PSI MIN.)
 A-2 SEAL COAT (AGGREGATE BY OTHERS)
 STAGE 2 - 2" H.M.A. 21' WIDE (FUTURE)

TYPICAL SECTION OF EXISTING ROAD



STA. 0+00.0 TO STA. 213+34.32

SECTION 12-00122-00-FP
 SUMMARY OF QUANTITIES

QUANTITY	UNIT	ITEM	CODE NUMBER
49,780	SQ. YD.	PROCESSING SOIL-CEMENT BASE COURSE 8"	35200300
31,989	100 WT.	CEMENT	35200500
29,868	GALLON	BITUMINOUS MATERIALS (COVER AND SEAL COATS)	40300300
1	LUMP SUM	MOBILIZATION	67100100