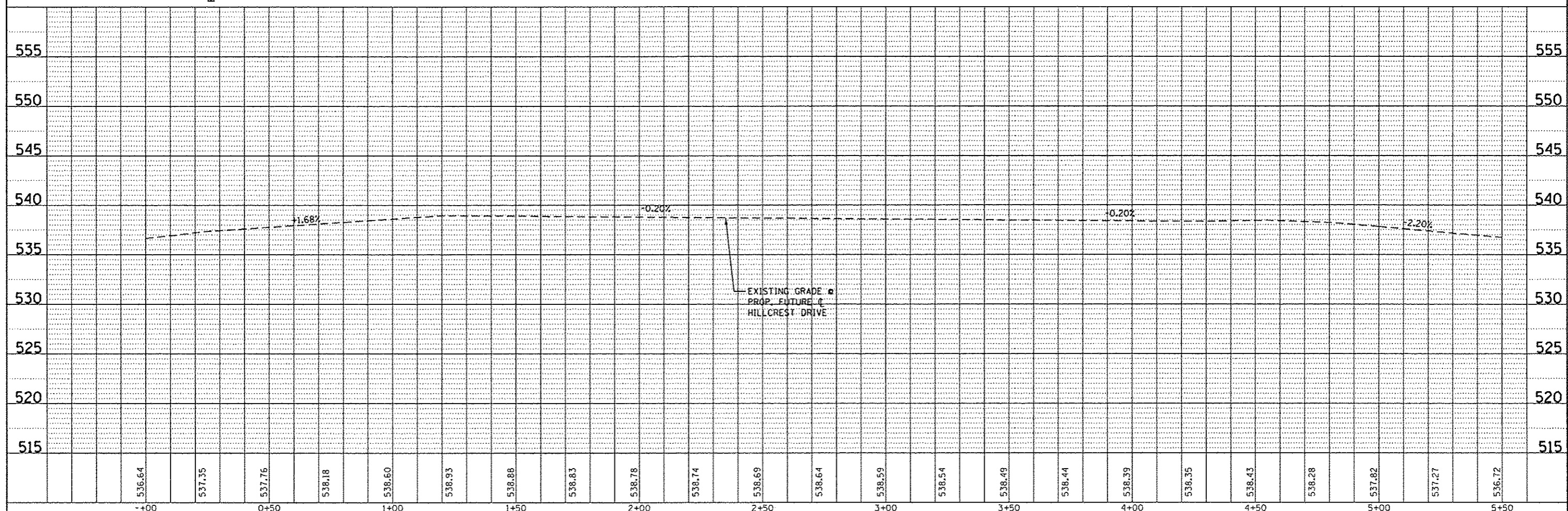
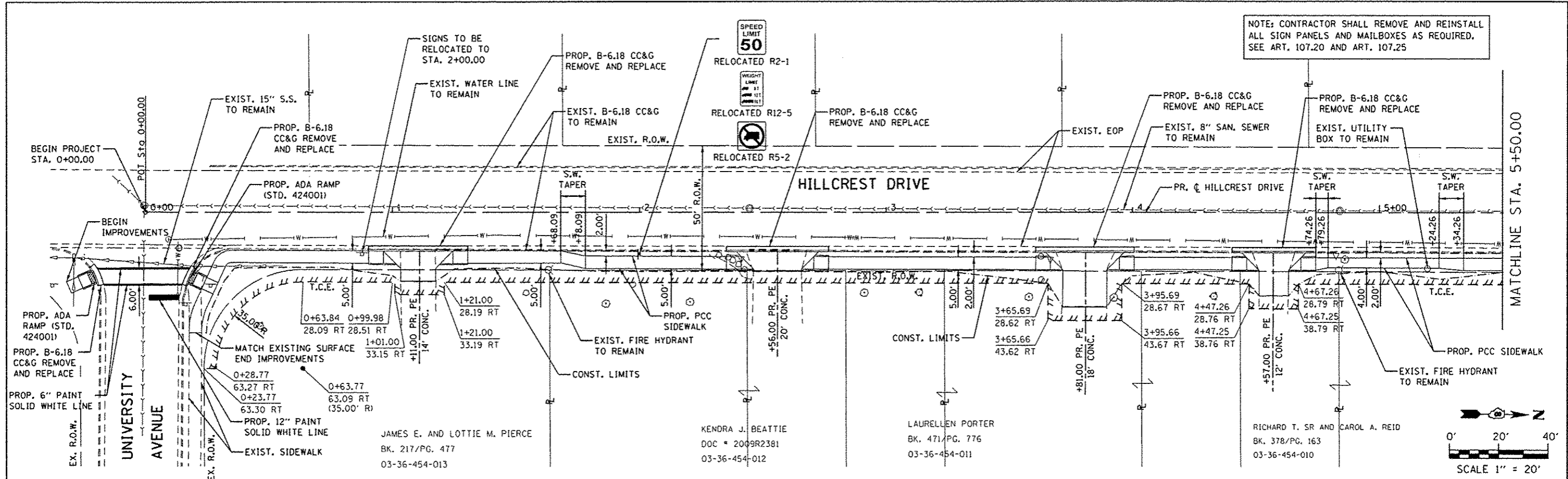


| | |
|-----------|--|
| DATE | |
| BY | |
| PLANNED | |
| NOTED | |
| REVISIONS | |
| NO. | |
| DATE | |
| BY | |
| PLANNED | |
| NOTED | |
| REVISIONS | |
| NO. | |
| DATE | |
| BY | |

| | |
|-----------|--|
| DATE | |
| BY | |
| PLANNED | |
| NOTED | |
| REVISIONS | |
| NO. | |
| DATE | |
| BY | |
| PLANNED | |
| NOTED | |
| REVISIONS | |
| NO. | |
| DATE | |
| BY | |



| | | | | | | | | | | |
|----------------------------------|--------------------------|----------------|-----------|---|--|---------------------------|----------|--------|--------------|-----------|
| FILE NAME : 180379A-PLANPRF1.dgn | USER NAME : hostermiller | DESIGNED - KMO | REVISED - | STATE OF ILLINOIS DEPARTMENT OF TRANSPORTATION | HILLCREST DRIVE SIDEWALK PLAN AND PROFILE | F.A. RTE. | SECTION | COUNTY | TOTAL SHEETS | SHEET NO. |
| | | DRAWN - KMO | REVISED - | | | 10-00036-00-SW | RANDOLPH | 52 | 11 | |
| | | CHECKED - | REVISED - | | | CONTRACT NO. #97517 | | | | |
| | | DATE - | REVISED - | | | ILLINOIS FED. AID PROJECT | | | | |

NOTE: CONTRACTOR SHALL REMOVE AND REINSTALL ALL SIGN PANELS AND MAILBOXES AS REQUIRED, SEE ART. 107.20 AND ART. 107.25

