

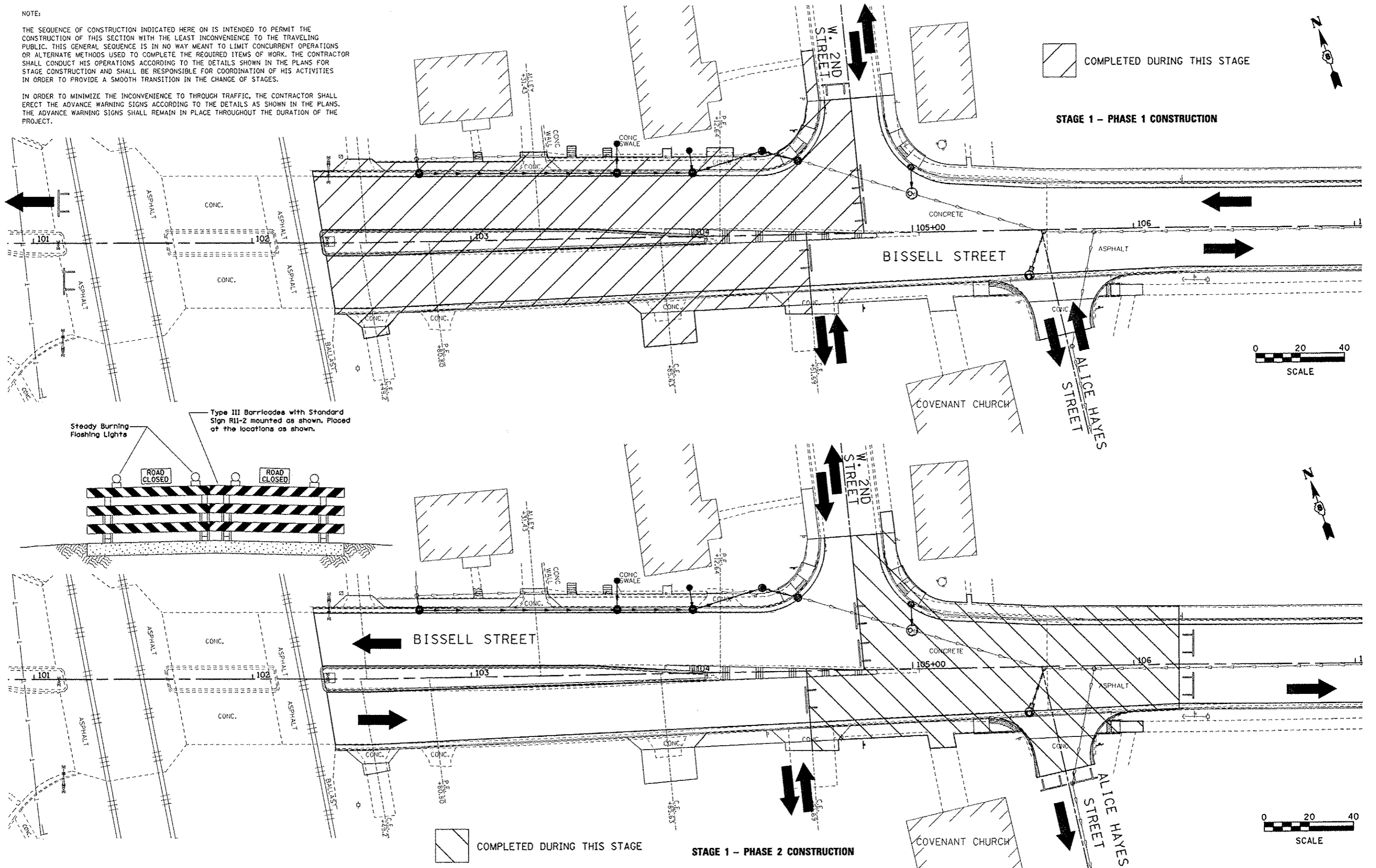
NOTE:

THE SEQUENCE OF CONSTRUCTION INDICATED HERE ON IS INTENDED TO PERMIT THE CONSTRUCTION OF THIS SECTION WITH THE LEAST INCONVENIENCE TO THE TRAVELING PUBLIC. THIS GENERAL SEQUENCE IS IN NO WAY MEANT TO LIMIT CONCURRENT OPERATIONS OR ALTERNATE METHODS USED TO COMPLETE THE REQUIRED ITEMS OF WORK. THE CONTRACTOR SHALL CONDUCT HIS OPERATIONS ACCORDING TO THE DETAILS SHOWN IN THE PLANS FOR STAGE CONSTRUCTION AND SHALL BE RESPONSIBLE FOR COORDINATION OF HIS ACTIVITIES IN ORDER TO PROVIDE A SMOOTH TRANSITION IN THE CHANGE OF STAGES.

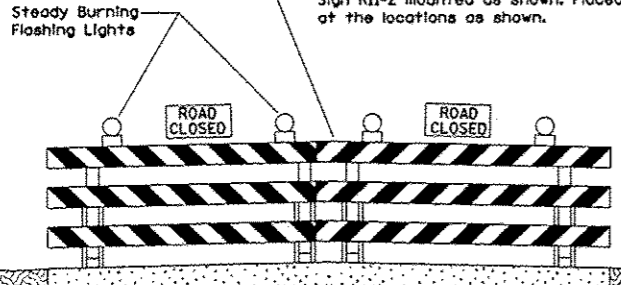
IN ORDER TO MINIMIZE THE INCONVENIENCE TO THROUGH TRAFFIC, THE CONTRACTOR SHALL ERECT THE ADVANCE WARNING SIGNS ACCORDING TO THE DETAILS AS SHOWN IN THE PLANS. THE ADVANCE WARNING SIGNS SHALL REMAIN IN PLACE THROUGHOUT THE DURATION OF THE PROJECT.

PLAN	DATE
REVISED	
NOTED	
NO. OF SHEETS	
NO. OF THIS SHEET	
NO.	

PROFILE	DATE
REVISED	
NOTED	
NO. OF SHEETS	
NO. OF THIS SHEET	
NO.	



Type III Barricades with Standard Sign R11-2 mounted as shown. Placed at the locations as shown.



FILE NAME	stage 01.dgn
-----------	--------------

USER NAME	romash
DESIGNED	SAS
DRAWN	SAS
CHECKED	BFK
DATE	12/20/13

REVISED	
REVISED	
REVISED	
REVISED	

**CITY OF MADISON
BISSELL STREET**

STAGE 1 CONSTRUCTION

SCALE: 1"=20' SHEET NO. 2 OF 5 SHEETS STA. 102+32.57 TO STA. 106+50.00

F.A.U. RTE.	SECTION	COUNTY	TOTAL SHEETS	SHEET NO.
9104	10-00058-00-PV	MADISON	53	27
CONTRACT NO. 97530				
ILLINOIS FED. AID PROJECT				