

ROAD CLASSIFICATION: **MAJOR COLLECTOR**
 DESIGN SPEED: 50 M.P.H.

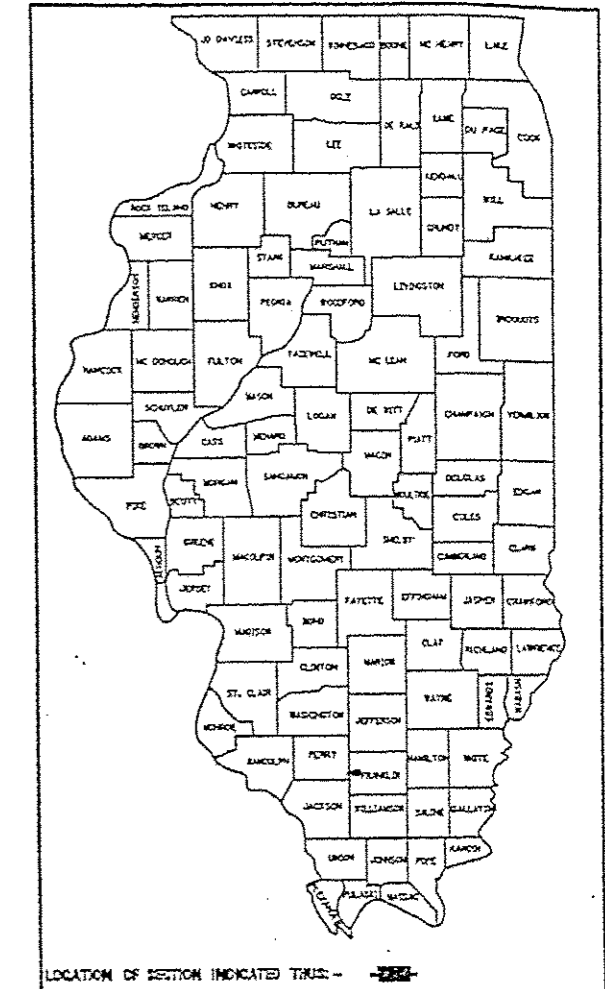
ADT:
 (2013) = 1000
 (2033) = 1350
 PC = 1188
 SU = 95
 MU = 67
 DHV 20 = 135

JOINT UTILITY LOCATING INFORMATION
 FOR EXCAVATIONS (J.U.L.I.E.)
 PHONE 1-800-892-0123

STATE OF ILLINOIS
 DEPARTMENT OF TRANSPORTATION
 DIVISION OF HIGHWAYS
PLANS FOR PROPOSED ROADWAY IMPROVEMENTS

FA.S. 1881
 Franklin County, Illinois
 Section 10-00179-00-RS
 Project RS-1881(115)
 JOB C-99-534-11

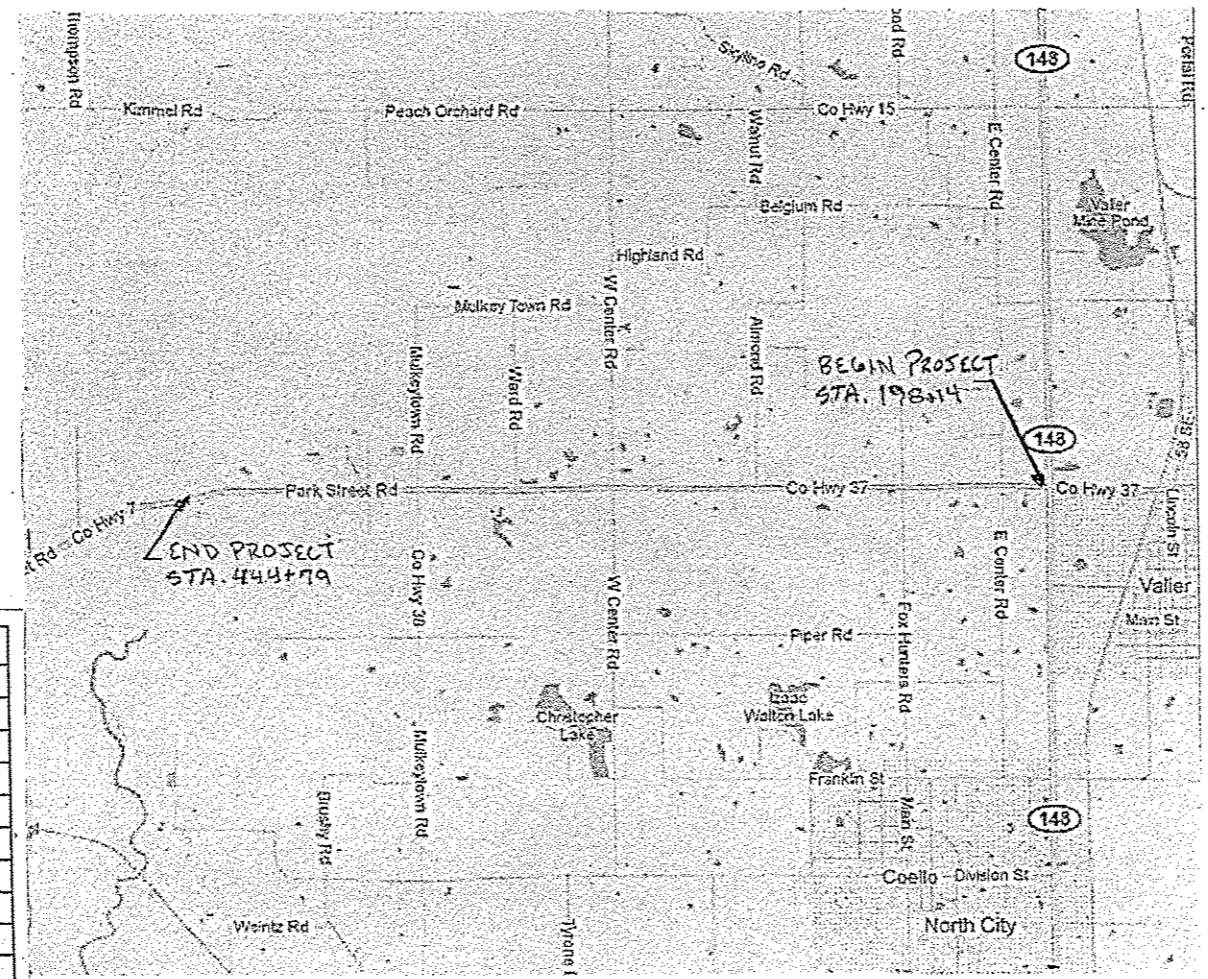
RTE.	SECTION	COUNTY	TOTAL SHEETS	SHEET NO
FAS 1881	10-00179-00-RS	FRANKLIN	8	1



SHEET NO.	TITLE
1	COVER SHEET AND SUMMARY OF QUANTITIES
2	MISCELLANEOUS DETAILS AND TYPICAL SECTIONS
3	MISCELLANEOUS DETAILS
4-8	PLAN

STANDARDS

- 701006-05
- 701201-04
- 701301-04
- 701306-03
- 701311-03
- 701901-03
- 780001-04
- BLR 24-2



LOCATION MAP

NET LENGTH = 4.67 MILES (24,499 FEET)

SUMMARY OF QUANTITIES			
CODE NO.	PAY ITEM	UNIT	TOTAL
40200800	AGGREGATE SURFACE COURSE, TYPE B	TON	76
40600100	BITUMINOUS MATERIALS (PRIME COAT)	GALLON	1108
40600982	HOT-MIX ASPHALT SURFACE REMOVAL - BUTT JOINT	SQ YD	216
40603090	HOT-MIX ASPHALT BINDER COURSE, IL 19.0, N90	TON	7,167
40603320	HOT-MIX ASPHALT SURFACE COURSE, MIX "C", N90	TON	5,617
48100100	AGGREGATE SHOULDERS, TYPE A	TON	3,461
67100100	MOBILIZATION	L SUM	1
70300100	SHORT-TERM PAVEMENT MARKING	FOOT	4,933
Δ78001110	PAINT PAVEMENT MARKING - LINE 4"	FOOT	70,673
X4401198	HOT-MIX ASPHALT SURFACE REMOVAL - VARIABLE DEPTH	SQ YD	1,039

Δ SPECIALTY ITEMS

CONTRACT NO. 99612



STATE OF ILLINOIS
 DEPARTMENT OF TRANSPORTATION

APPROVED 2/3/2014
[Signature]
 FRANKLIN COUNTY HIGHWAY ENGINEER

PASSED 2/5/2014
[Signature]
 DISTRICT 9 ENGINEER OF LOCAL ROADS & STREETS

RELEASING FOR BID
 BASED ON LIMITED REVIEW 2/5/2014
[Signature]
 DEPUTY DIRECTOR OF HIGHWAYS, REGION 5 ENGINEER

[Signature]
 MICHAEL A. ROLLA
 ILLINOIS REGISTERED PROFESSIONAL ENGINEER
 #062-056332
 LIC. EXPIRES NOVEMBER 30,