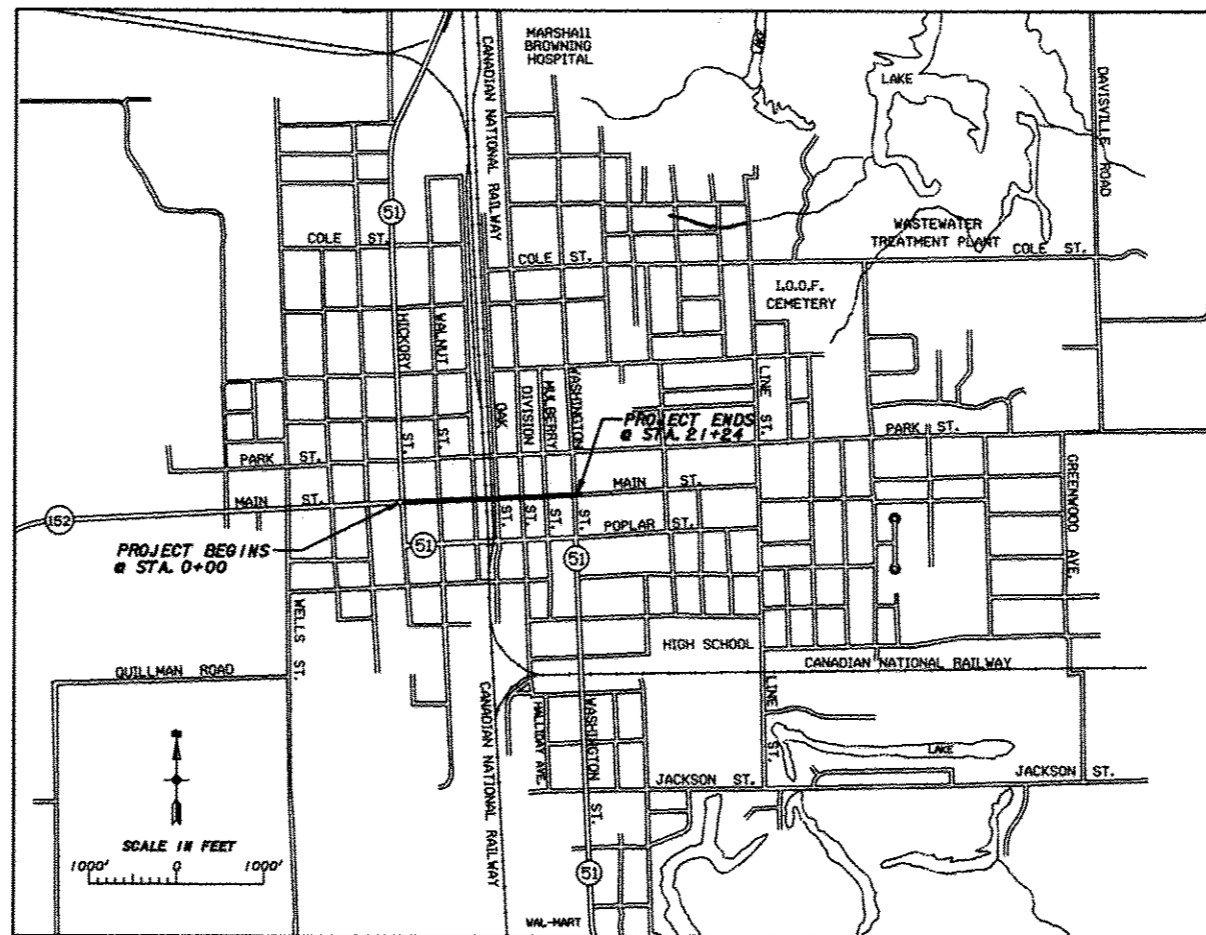


STATE OF ILLINOIS
 DEPARTMENT OF TRANSPORTATION
 DIVISION OF HIGHWAYS
 PLANS FOR PROPOSED
 FAU PROJECT
 CITY OF DU QUOIN
 F.A.U. ROUTE 9521 SECTION 12-00052-00-RS
 PERRY COUNTY
 JOB NO. C-99-506-13
 PROJECT NO. M-5019(009) CONTRACT NO. 99527
 MAIN STREET REHABILITATION

F.A.U. ROUTE	SECTION	COUNTY	TOTAL SHEETS	SHEET NUMBER
9521	12-00052-00-RS	PERRY	10	1
CITY OF DU QUOIN		PROJECT NO. M-5019(009)		
CONTRACT NO. 99527		JOB NO. C-99-506-13		

LIST OF HIGHWAY STANDARDS

HIGHWAY STANDARD NO.	TITLE
701501-06	URBAN LANE CLOSURE 2L, 2W, UNDIVIDED
701901-03	TRAFFIC CONTROL DEVICES
780001-04	TYPICAL PAVEMENT MARKING



INDEX OF SHEETS

SHEET NO	DESCRIPTION
1	TITLE SHEET, LIST OF STANDARDS, INDEX OF SHEETS AND PROJECT LOCATION MAP
2	SUMMARY OF QUANTITIES, TYPICAL SECTIONS AND CROSSWALK PAVEMENT IMPRINTING DETAIL
3	PLAN FOR PROPOSED IMPROVEMENTS STA. 0+00 TO STA. 4+00
4	PLAN FOR PROPOSED IMPROVEMENTS STA. 4+00 TO STA. 10+00
5	PLAN FOR PROPOSED IMPROVEMENTS STA. 10+00 TO STA. 16+00
6	PLAN FOR PROPOSED IMPROVEMENTS STA. 16+00 TO STA. 21+18
7	PAVEMENT MARKING PLAN - STA. 0+00 TO STA. 5+50
8	PAVEMENT MARKING PLAN - STA. 5+50 TO STA. 10+50
9	PAVEMENT MARKING PLAN - STA. 10+50 TO STA. 17+00
10	PAVEMENT MARKING PLAN - STA. 17+00 TO STA. 21+24

FIELD BOOK NO. 425-S

SCALE AS SHOWN	J. T. BLANKINSHIP, INC. CONSULTING ENGINEERS & LAND SURVEYORS ILLINOIS PROFESSIONAL ENGINEER FIRM NO. 1584 405 S. 17TH STREET SUITE 200, QUINCY, ILLINOIS 62450	FILE NO. E-9677
DATE JAN. 2014		SHEET NO. 1 OF 10

JULIE - 1-800-892-0123

UTILITIES ON PROJECT

CITY OF DU QUOIN	- WATER, SEWER
AMEREN ILLINOIS COMPANY, MARION, IL.	- ELECTRIC, GAS
FRONTIER, MARION, IL.	- TELEPHONE
CLEAR WAVE	- FIBER OPTIC
CONCAST	- CABLE TV



TED R. BRIGGS
 REG. NO. 002-053736
 DATE 02/19/14
 EXPIRES 11-30-15

STATE OF ILLINOIS
 DEPARTMENT OF TRANSPORTATION

APPROVED *Feb 12* 20 *14*

REX DUNCAN - MAYOR CITY OF DU QUOIN

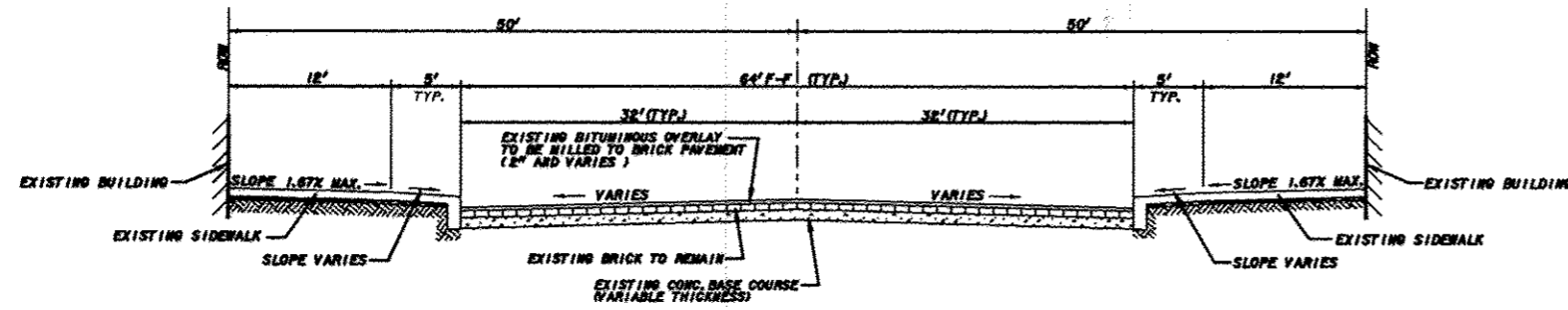
PASSED *2/19* 20 *14*

Dennis Hillebrand - DISTRICT 3 ENGINEER OF LOCAL ROADS & STREETS

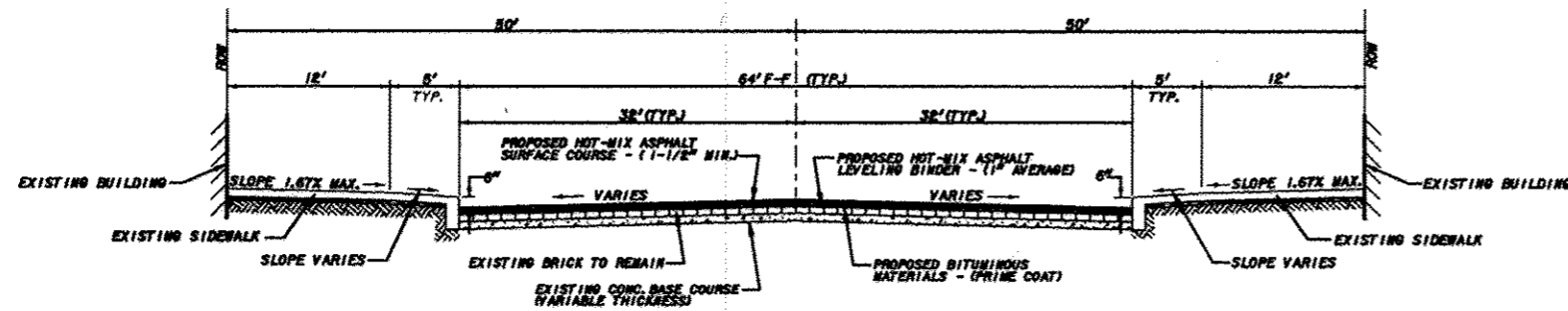
RELEASING FOR BID
 BASED ON LIMITED
 REVIEW

FEB. 19th 20 *14*

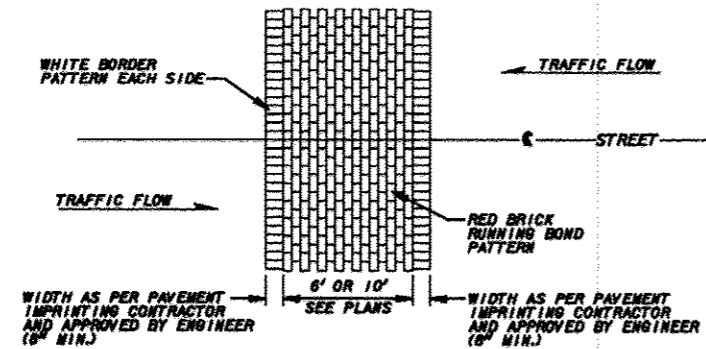
Jeffrey L. Keim
 DEPT. DIRECTOR OF HIGHWAYS, REGION 5 ENGINEER



EXISTING TYPICAL SECTION
NOT TO SCALE



PROPOSED TYPICAL SECTION
NOT TO SCALE



CROSSWALK PAVEMENT IMPRINTING DETAIL
NOT TO SCALE

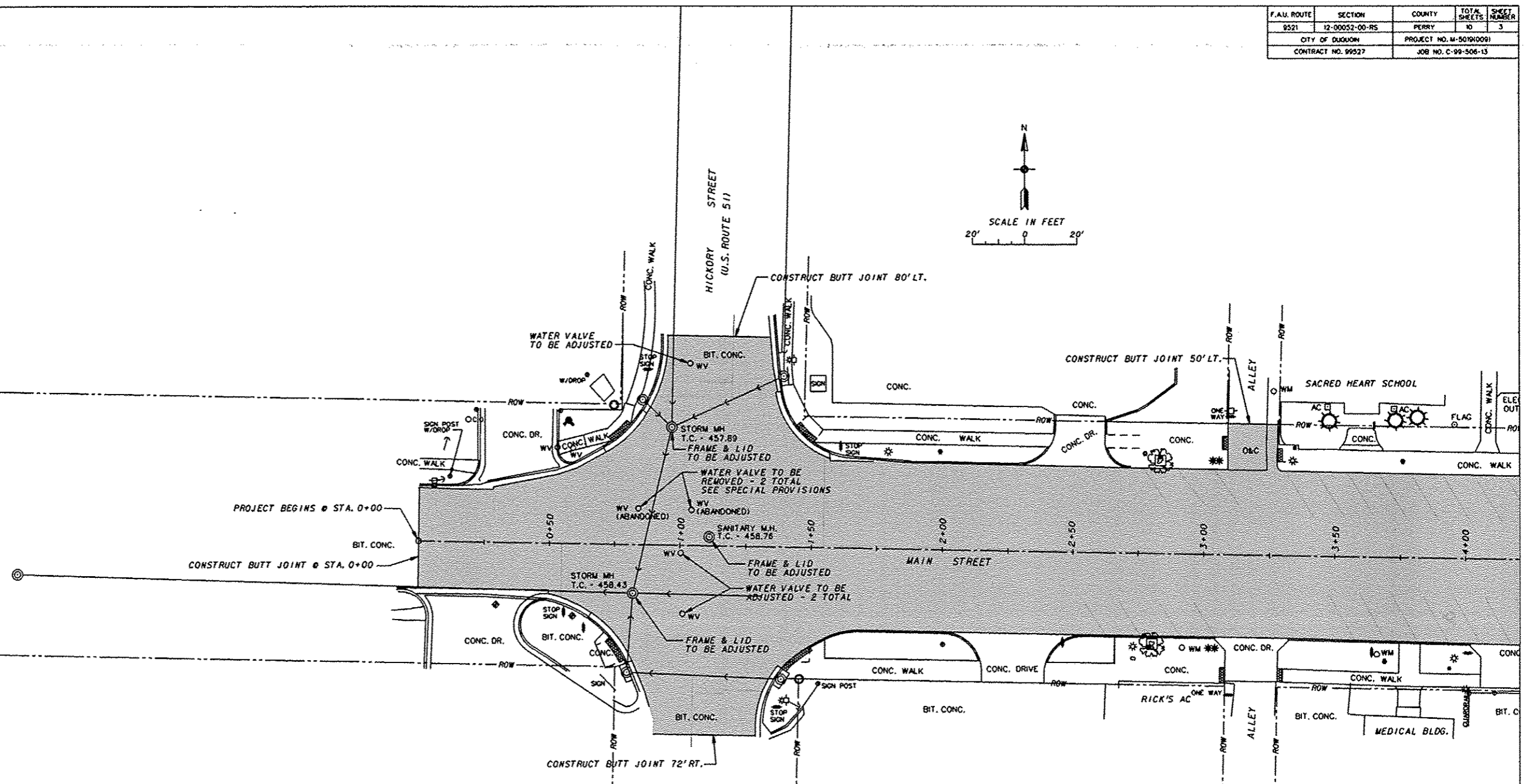
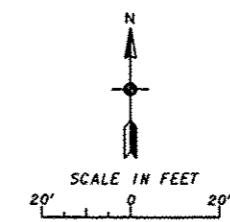
SUMMARY OF QUANTITIES

CONSTRUCTION TYPE CODE 0005

CODE NUMBER	ITEM	OF UNIT MEASURE	QUANTITY	AS-BUILT
X008945	WATER VALVES TO BE REMOVED	EACH	10	
X0326859	PAVEMENT IMPRINTING	SQ YD	1,100	
X440198	HOT-MIX ASPHALT SURFACE REMOVAL, VARIABLE DEPTH	SQ YD	16,700	
X6024503	INLETS TO BE ADJUSTED WITH NEW FRAME AND GRATE (SPECIAL)	EACH	8	
X6025800	MANHOLES TO BE ADJUSTED (SPECIAL)	EACH	9	
X7010216	TRAFFIC CONTROL AND PROTECTION, (SPECIAL)	L SUM	1	
Z0048685	RAILROAD PROTECTIVE LIABILITY INSURANCE	L SUM	1	
40600100	BITUMINOUS MATERIALS (PRIME COAT)	GALLON	1,550	
40600300	AGGREGATE (PRIME COAT)	TON	50	
40600845	LEVELING BINDER (MACHINE METHOD), N90	TON	1,150	
40603345	HOT-MIX ASPHALT SURFACE COURSE, MIX "D", N90	TON	1,550	
56109210	WATER VALVES TO BE ADJUSTED	EACH	38	
60300305	FRAMES AND LIDS TO BE ADJUSTED	EACH	3	
67100100	MOBILIZATION	L SUM	1	
Δ 78000200	THERMOPLASTIC PAVEMENT MARKING-LINE 4"	FOOT	120	
Δ 78000600	THERMOPLASTIC PAVEMENT MARKING-LINE 12"	FOOT	560	
Δ 78000650	THERMOPLASTIC PAVEMENT MARKING-LINE 24"	FOOT	110	
Δ 78001100	PAINT PAVEMENT MARKING-LETTERS AND SYMBOLS	SQ FT	123	
Δ 78001110	PAINT PAVEMENT MARKING-LINE 4"	FOOT	6,830	
Δ 78001150	PAINT PAVEMENT MARKING-LINE 12"	FOOT	390	
Δ 78001180	PAINT PAVEMENT MARKING-LINE 24"	FOOT	340	

Δ SPECIALTY ITEMS

F.A.U. ROUTE	SECTION	COUNTY	TOTAL SHEETS	SHEET NUMBER
9521	12-00052-00-RS	PERRY	10	3
CITY OF DUQUOIN		PROJECT NO. M-501910091		
CONTRACT NO. 99527		JOB NO. C-99-506-13		



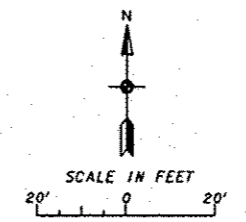
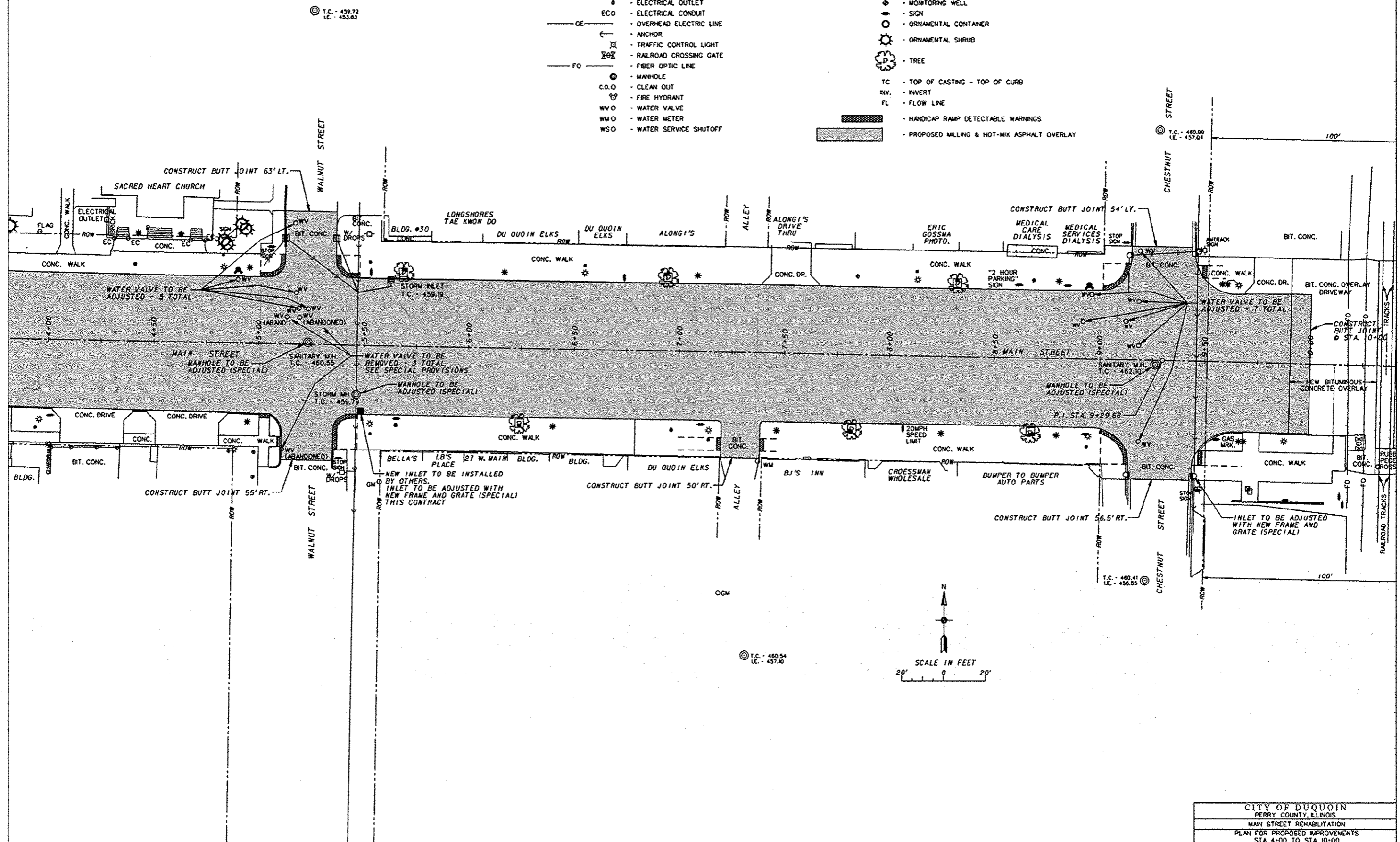
LEGEND

- | | |
|---|--|
| <ul style="list-style-type: none"> ⊠ - POWER POLE ⊠ - POWER / TELEPHONE POLE ⊠ - POWER / TELEPHONE POLE W/ LIGHT ⊠ - STREET LIGHT POLE * * - SINGLE / DOUBLE FIXTURE PEDESTRIAN LIGHT ⊠ - ELECTRICAL JUNCTION BOX ● - ELECTRICAL OUTLET ECO - ELECTRICAL CONDUIT OE - OVERHEAD ELECTRIC LINE ← - ANCHOR ⊠ - TRAFFIC CONTROL LIGHT ⊠ - RAILROAD CROSSING GATE FO - FIBER OPTIC LINE ⊠ - MANHOLE CO.O - CLEAN OUT ⊠ - FIRE HYDRANT WVO - WATER VALVE WMO - WATER METER WSO - WATER SERVICE SHUTOFF | <ul style="list-style-type: none"> ⊠ - STORM SEWER & MANHOLE ⊠ - STORM SEWER & INLET GVO - GAS VALVE GM.O - GAS METER --- ROW --- - RIGHT-OF-WAY LINE ● - POST ⊠ - MONITORING WELL ⊠ - SIGN ⊠ - ORNAMENTAL CONTAINER ⊠ - ORNAMENTAL SHRUB ⊠ - TREE TC - TOP OF CASTING - TOP OF CURB INV. - INVERT FL - FLOW LINE ▨ - HANDICAP RAMP DETECTABLE WARNINGS ▨ - PROPOSED MILLING & HOT-MIX ASPHALT OVERLAY |
|---|--|

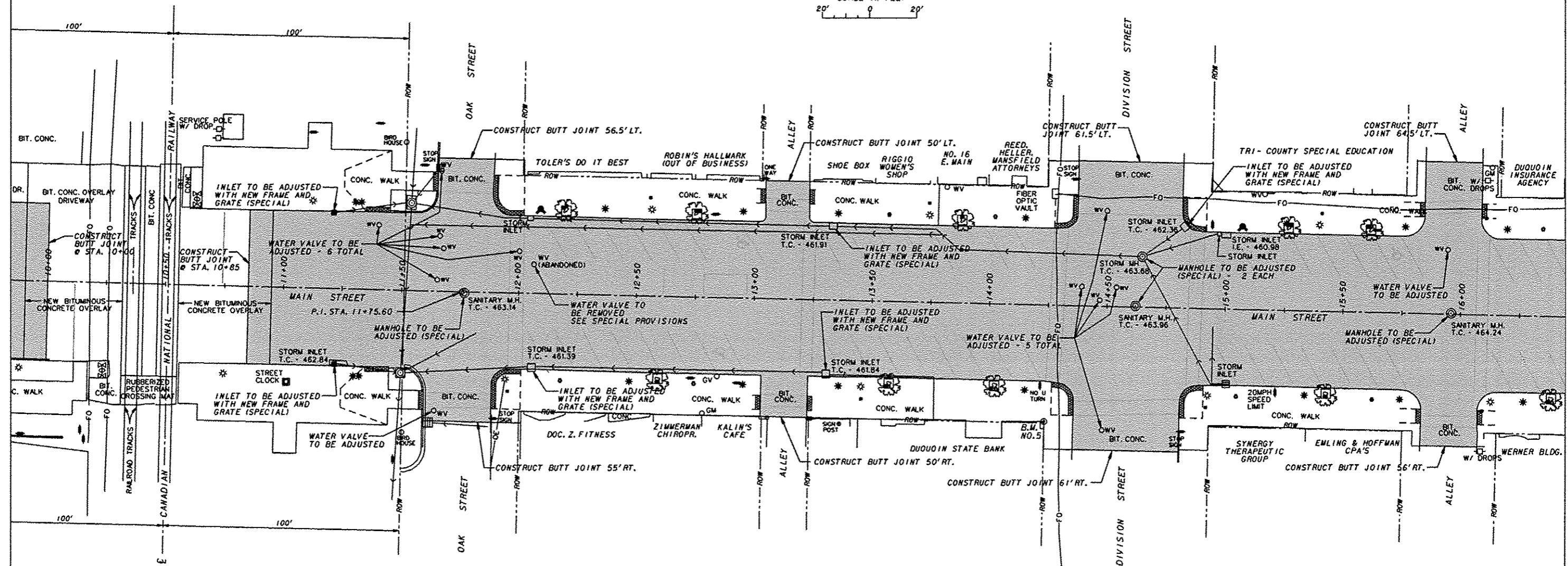
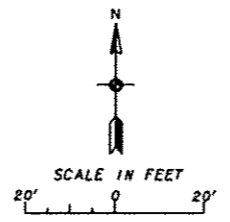
F.A.U. ROUTE	SECTION	COUNTY	TOTAL SHEETS	SHEET NUMBER
9521	12-00052-00-RS	PERRY	10	4
CITY OF DUQUOIN		PROJECT NO. W-5019(009)		
CONTRACT NO. 99527		JOB NO. C-99-506-13		

LEGEND

- ☐ - POWER POLE
- ☐ - POWER / TELEPHONE POLE
- ☐ - POWER / TELEPHONE POLE W/ LIGHT
- ☐ - STREET LIGHT POLE
- * * * - SINGLE / DOUBLE FIXTURE PEDESTRIAN LIGHT
- ☐ - ELECTRICAL JUNCTION BOX
- - ELECTRICAL OUTLET
- ECO - ELECTRICAL CONDUIT
- OE - OVERHEAD ELECTRIC LINE
- - ANCHOR
- ⊗ - TRAFFIC CONTROL LIGHT
- ⊗ - RAILROAD CROSSING GATE
- FO - FIBER OPTIC LINE
- - MANHOLE
- C.O.O - CLEAN OUT
- ⊕ - FIRE HYDRANT
- WV ○ - WATER VALVE
- WM ○ - WATER METER
- WSO - WATER SERVICE SHUTOFF
- ☉ - STORM SEWER & MANHOLE
- ☉ - STORM SEWER & INLET
- GV ○ - GAS VALVE
- GM ○ - GAS METER
- ROW --- - RIGHT-OF-WAY LINE
- - POST
- ⊕ - MONITORING WELL
- ⊕ - SIGN
- - ORNAMENTAL CONTAINER
- ☼ - ORNAMENTAL SHRUB
- ☼ - TREE
- TC - TOP OF CASTING - TOP OF CURB
- INV. - INVERT
- FL - FLOW LINE
- ▨ - HANDICAP RAMP DETECTABLE WARNINGS
- ▨ - PROPOSED MILLING & HOT-MIX ASPHALT OVERLAY



F.A.U. ROUTE	SECTION	COUNTY	TOTAL SHEETS	SHEET NUMBER
9521	12-00052-00-RS	PERRY	10	5
CITY OF DUQUOIN		PROJECT NO. M-5019(009)		
CONTRACT NO. 99527		JOB NO. C-99-506-13		

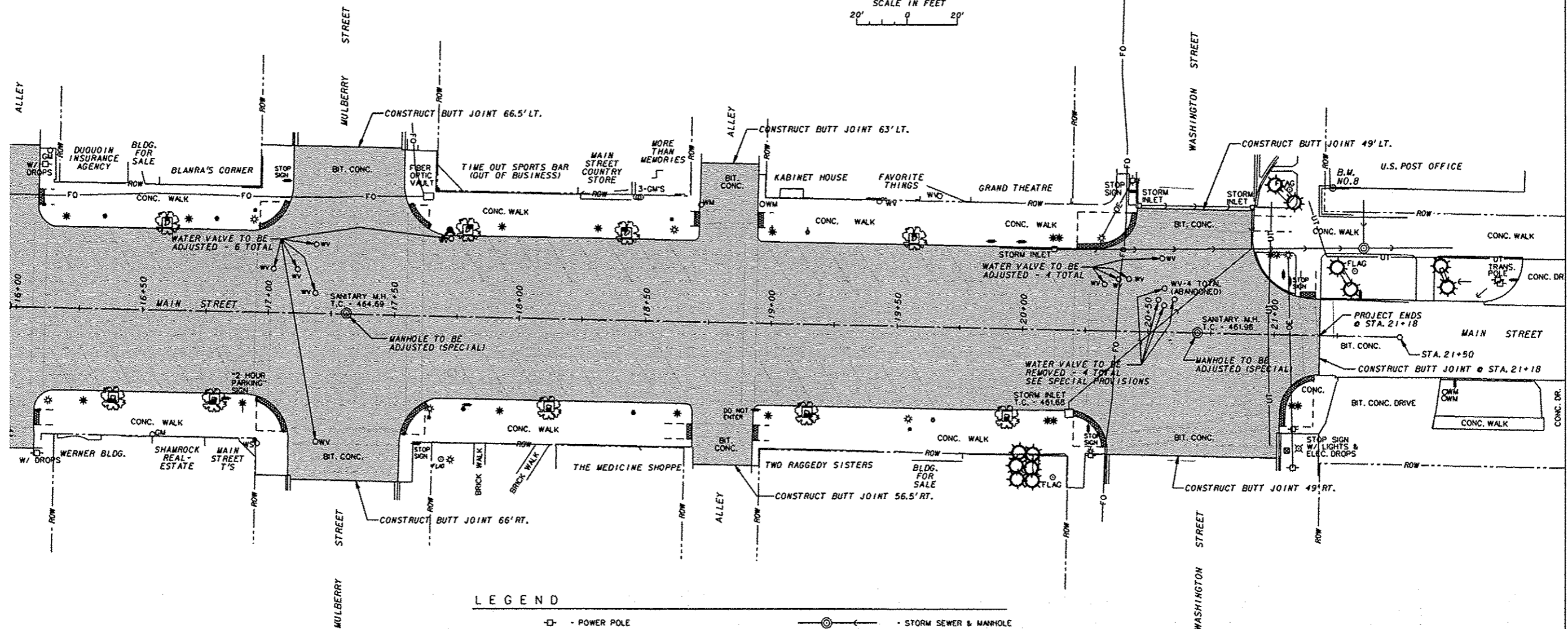
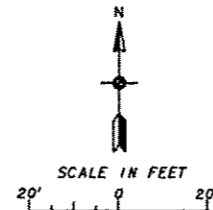


LEGEND

- POWER POLE
- POWER / TELEPHONE POLE
- POWER / TELEPHONE POLE W/ LIGHT
- STREET LIGHT POLE
- SINGLE / DOUBLE FIXTURE PEDESTRIAN LIGHT
- ELECTRICAL JUNCTION BOX
- ELECTRICAL OUTLET
- ELECTRICAL CONDUIT
- OVERHEAD ELECTRIC LINE
- ANCHOR
- TRAFFIC CONTROL LIGHT
- RAILROAD CROSSING GATE
- FIBER OPTIC LINE
- MANHOLE
- CLEAN OUT
- FIRE HYDRANT
- WATER VALVE
- WATER METER
- WATER SERVICE SHUTOFF
- STORM SEWER & MANHOLE
- STORM SEWER & INLET
- GAS VALVE
- GAS METER
- RIGHT-OF-WAY LINE
- POST
- MONITORING WELL
- SIGN
- ORNAMENTAL CONTAINER
- ORNAMENTAL SHRUB
- TREE
- TOP OF CASTING - TOP OF CURB
- INVERT
- FLOW LINE
- HANDICAP RAMP DETECTABLE WARNINGS
- PROPOSED MILLING & HOT-MIX ASPHALT OVERLAY

CITY OF DUQUOIN
 PERRY COUNTY, ILLINOIS
 MAIN STREET REHABILITATION
 PLAN FOR PROPOSED IMPROVEMENTS
 STA. 10+00 TO STA. 16+00

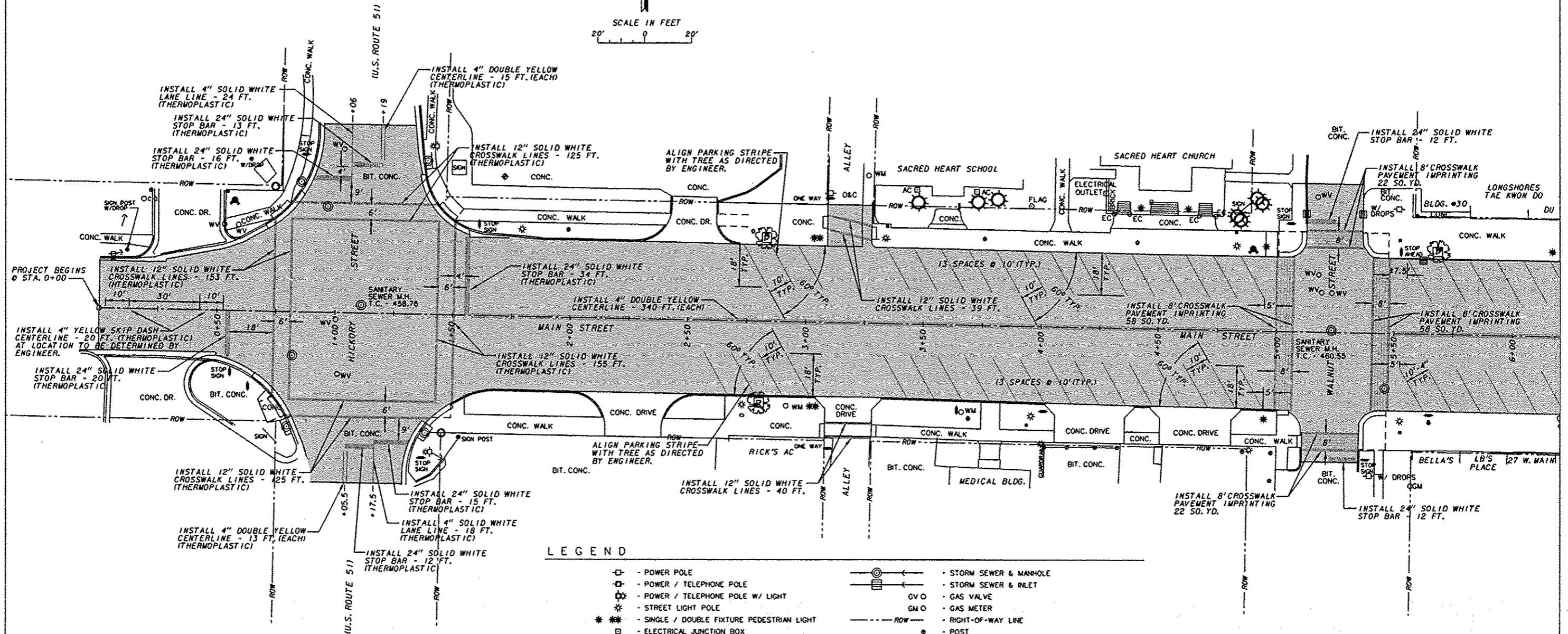
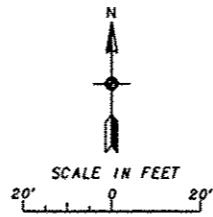
F.A.U. ROUTE	SECTION	COUNTY	TOTAL SHEETS	SHEET NUMBER
9521	12-00052-00-RS	PERRY	10	6
CITY OF DUQUOIN		PROJECT NO. W-5019(009)		
CONTRACT NO. 99527		JOB NO. C-99-506-13		



LEGEND

- | | |
|--|---|
| <ul style="list-style-type: none"> □ - POWER POLE ⊕ - POWER / TELEPHONE POLE ⊕ - POWER / TELEPHONE POLE W/ LIGHT ⊕ - STREET LIGHT POLE * - SINGLE / DOUBLE FIXTURE PEDESTRIAN LIGHT □ - ELECTRICAL JUNCTION BOX ● - ELECTRICAL OUTLET ECO - ELECTRICAL CONDUIT OE - OVERHEAD ELECTRIC LINE ← - ANCHOR ⊕ - TRAFFIC CONTROL LIGHT ⊕ - RAILROAD CROSSING GATE FO - FIBER OPTIC LINE ⊕ - MANHOLE C.O.O - CLEAN OUT ⊕ - FIRE HYDRANT WV - WATER VALVE WM - WATER METER WSO - WATER SERVICE SHUTOFF | <ul style="list-style-type: none"> ⊕ - STORM SEWER & MANHOLE ⊕ - STORM SEWER & INLET GVO - GAS VALVE GMO - GAS METER --- ROW - RIGHT-OF-WAY LINE ● - POST ⊕ - MONITORING WELL ⊕ - SIGN ⊕ - ORNAMENTAL CONTAINER ⊕ - ORNAMENTAL SHRUB ⊕ - TREE TC - TOP OF CASTING - TOP OF CURB INV. - INVERT FL - FLOW LINE ▨ - HANDICAP RAMP DETECTABLE WARNINGS ▨ - PROPOSED MILLING & HOT-MIX ASPHALT OVERLAY |
|--|---|

CITY OF DUQUOIN
PERRY COUNTY, ILLINOIS
MAIN STREET REHABILITATION
PLAY FOR PROPOSED IMPROVEMENTS
STA. 18+00 TO STA. 21+18



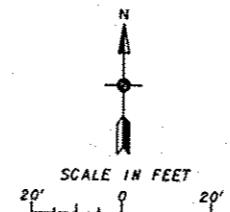
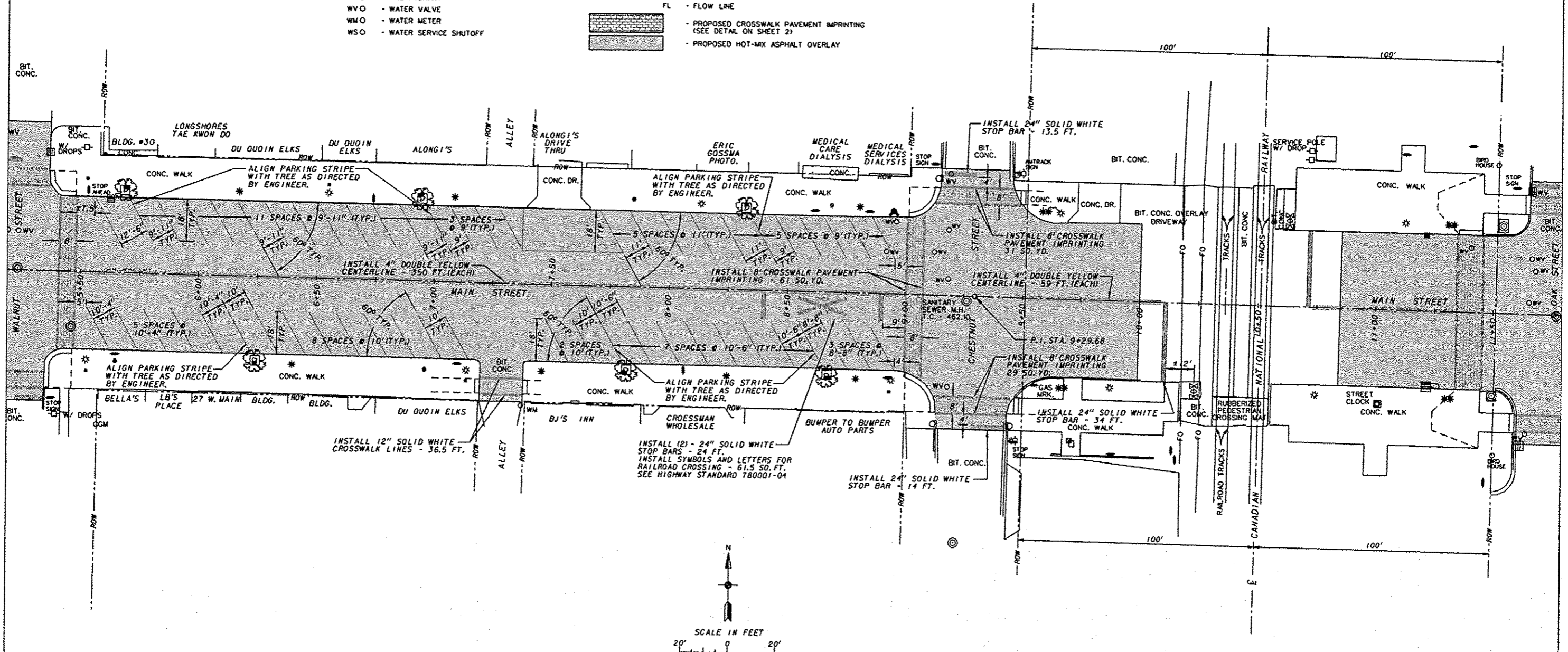
LEGEND

- - POWER POLE
- ⊕ - POWER / TELEPHONE POLE
- ⊕ - POWER / TELEPHONE POLE W/ LIGHT
- ⊙ - STREET LIGHT POLE
- ⊙ - SINGLE / DOUBLE FIXTURE PEDESTRIAN LIGHT
- ⊙ - ELECTRICAL JUNCTION BOX
- ⊙ - ELECTRICAL OUTLET
- ECO - ELECTRICAL CONDUIT
- OE - OVERHEAD ELECTRIC LINE
- ← - ANCHOR
- ⊗ - TRAFFIC CONTROL LIGHT
- ⊗ - RAILROAD CROSSING GATE
- FO - FIBER OPTIC LINE
- ⊙ - MANHOLE
- C.O.O - CLEAN OUT
- ⊕ - FIRE HYDRANT
- WVO - WATER VALVE
- WMO - WATER METER
- WSO - WATER SERVICE SHUTOFF
- ⊙ - STORM SEWER & MANHOLE
- ⊙ - STORM SEWER & RILET
- GV - GAS VALVE
- GM - GAS METER
- ROW --- - RIGHT-OF-WAY LINE
- ⊙ - POST
- ⊙ - MONITORING WELL
- ⊙ - SIGN
- ⊙ - ORNAMENTAL CONTAINER
- ⊙ - ORNAMENTAL SHRUB
- ⊙ - TREE
- TC - TOP OF CASTING - TOP OF CURB
- INV. - INVERT
- FL - FLOW LINE
- [Pattern] - PROPOSED CROSSWALK PAVEMENT IMPRINTING (SEE DETAIL ON SHEET 2)
- [Pattern] - PROPOSED HOT-MIX ASPHALT OVERLAY

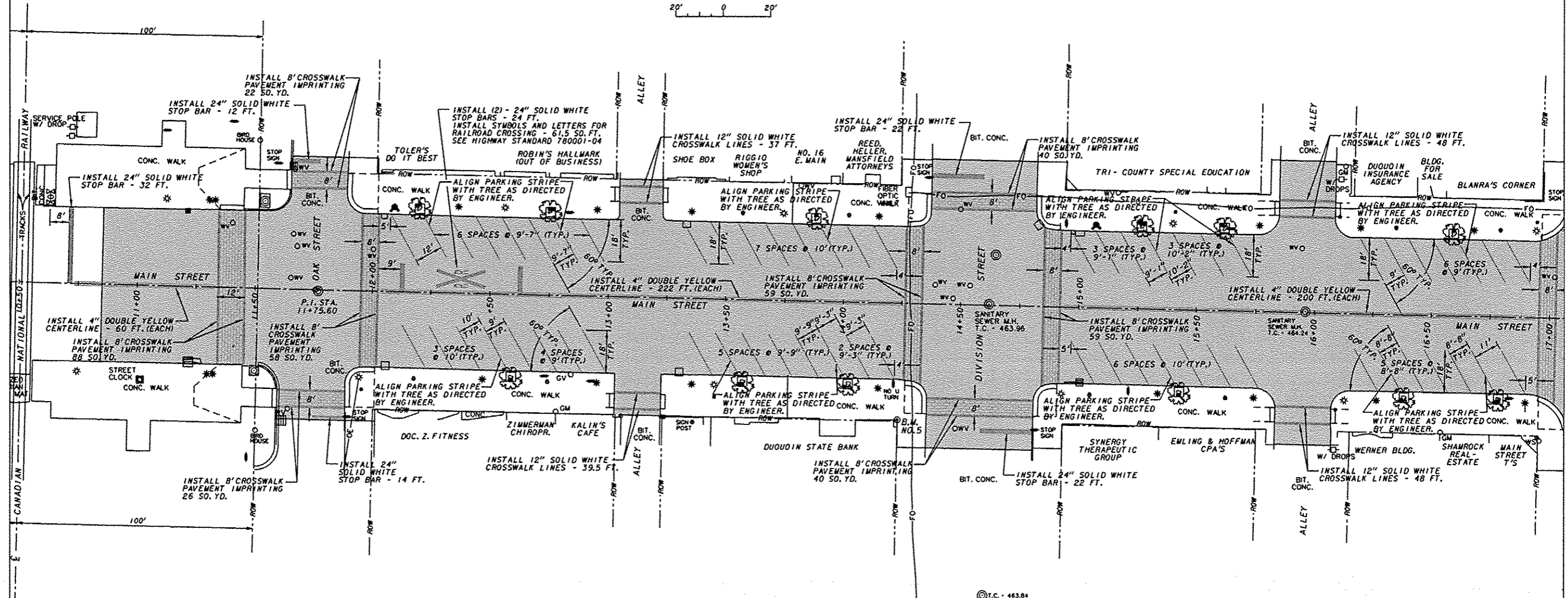
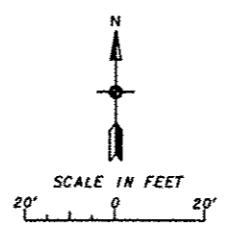
LEGEND

- ☐ - POWER POLE
- ⊕ - POWER / TELEPHONE POLE
- ⊕ - POWER / TELEPHONE POLE W/ LIGHT
- * - STREET LIGHT POLE
- * - SINGLE / DOUBLE FIXTURE PEDESTRIAN LIGHT
- ⊠ - ELECTRICAL JUNCTION BOX
- - ELECTRICAL OUTLET
- EO - ELECTRICAL CONDUIT
- OE - OVERHEAD ELECTRIC LINE
- ← - ANCHOR
- ⊠ - TRAFFIC CONTROL LIGHT
- ⊠ - RAILROAD CROSSING GATE
- FO - FIBER OPTIC LINE
- ⊙ - MANHOLE
- C.O.O. - CLEAN OUT
- ⊕ - FIRE HYDRANT
- WV - WATER VALVE
- WMO - WATER METER
- WSO - WATER SERVICE SHUTOFF
- ⊕ - STORM SEWER & MANHOLE
- ⊕ - STORM SEWER & INLET
- GV - GAS VALVE
- GM - GAS METER
- ROW --- - RIGHT-OF-WAY LINE
- - POST
- ⊕ - MONITORING WELL
- ⊕ - SIGN
- ⊕ - ORNAMENTAL CONTAINER
- ⊕ - ORNAMENTAL SHRUB
- ⊕ - TREE
- TC - TOP OF CASTING - TOP OF CURB
- INV. - INVERT
- FL - FLOW LINE
- [Pattern] - PROPOSED CROSSWALK PAVEMENT IMPRINTING (SEE DETAIL ON SHEET 2)
- [Pattern] - PROPOSED HOT-MIX ASPHALT OVERLAY

F.A.U. ROUTE	SECTION	COUNTY	TOTAL SHEETS	SHEET NUMBER
9521	12-00052-00-RS	PERRY	10	8
CITY OF DUQUOIN		PROJECT NO. M-5019(0091)		
CONTRACT NO. 99527		JOB NO. C-99-506-13		



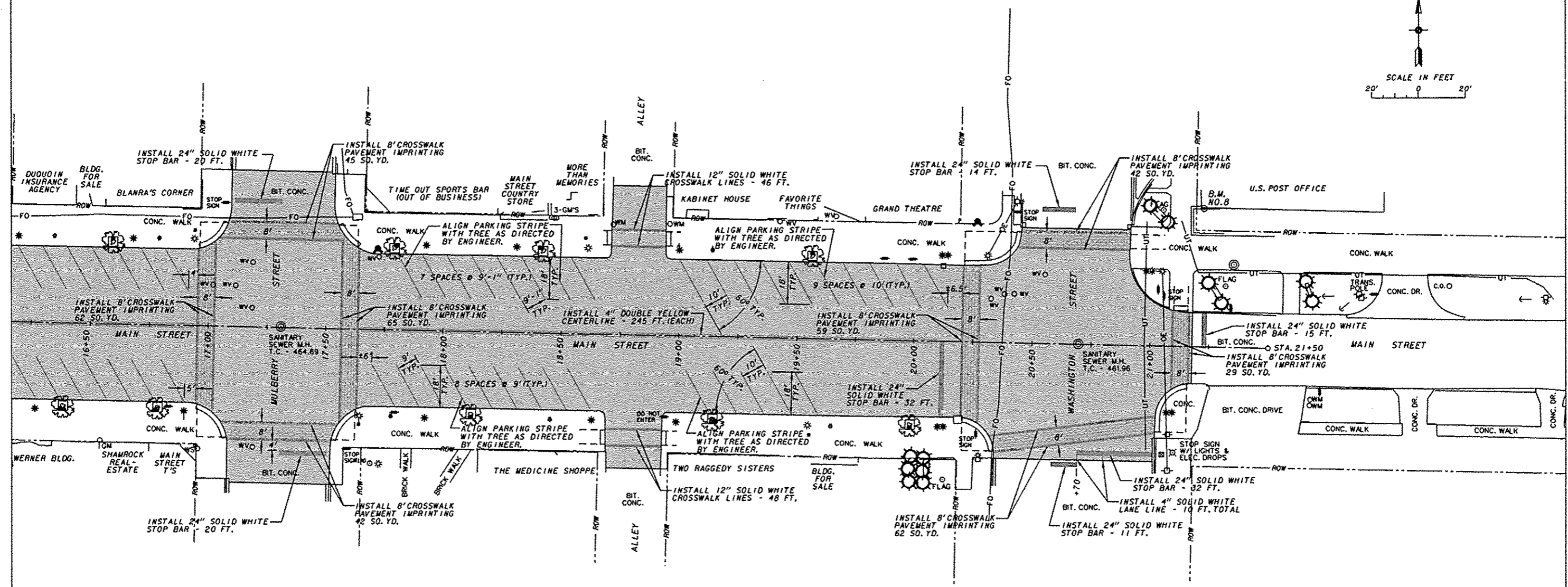
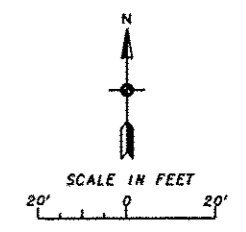
F.A.U. ROUTE	SECTION	COUNTY	TOTAL SHEETS	SHEET NUMBER
9521	12-00052-00-RS	PERRY	10	9
CITY OF DUQUOIN		PROJECT NO. M-5019(0091)		
CONTRACT NO. 99527		JOB NO. C-99-506-13		



LEGEND

- | | | | |
|-------|--|---------|--------------------------------|
| ☐ | - POWER POLE | ⊕ | - STORM SEWER & MANHOLE |
| ⊕ | - POWER / TELEPHONE POLE | ⊕ | - STORM SEWER & INLET |
| ☼ | - POWER / TELEPHONE POLE W/ LIGHT | GVO | - GAS VALVE |
| ☼ | - STREET LIGHT POLE | GMO | - GAS METER |
| * * | - SINGLE / DOUBLE FIXTURE PEDESTRIAN LIGHT | --- ROW | - RIGHT-OF-WAY LINE |
| ☐ | - ELECTRICAL JUNCTION BOX | • | - POST |
| • | - ELECTRICAL OUTLET | ⊕ | - MONITORING WELL |
| ECO | - ELECTRICAL CONDUIT | ⊕ | - SIGN |
| — DE | - OVERHEAD ELECTRIC LINE | ○ | - ORNAMENTAL CONTAINER |
| ← | - ANCHOR | ☼ | - ORNAMENTAL SHRUB |
| ⊕ | - TRAFFIC CONTROL LIGHT | ☼ | - TREE |
| ⊕ | - RAILROAD CROSSING GATE | TC | - TOP OF CASTING - TOP OF CURB |
| — FO | - FIBER OPTIC LINE | INV. | - INVERT |
| ⊕ | - MANHOLE | FL | - FLOW LINE |
| C.O.O | - CLEAN OUT | | |
| ⊕ | - FIRE HYDRANT | | |
| WVO | - WATER VALVE | | |
| WMO | - WATER METER | | |
| WSO | - WATER SERVICE SHUTOFF | | |
-
- | | |
|--|--|
| | - PROPOSED CROSSWALK PAVEMENT IMPRINTING (SEE DETAIL ON SHEET 2) |
| | - PROPOSED HOT-MIX ASPHALT OVERLAY |

F.A.U. ROUTE	SECTION	COUNTY	TOTAL SHEETS	SHEET NUMBER
9521	12-00052-00-RS	PERRY	20	10
CITY OF DUQUOIN		PROJECT NO. W-501R(009)		
CONTRACT NO. 99527		JOB NO. C-99-506-13		



LEGEND

- | | |
|--|--|
| <ul style="list-style-type: none"> □ - POWER POLE ○ - POWER / TELEPHONE POLE ⊗ - POWER / TELEPHONE POLE W/ LIGHT * - STREET LIGHT POLE * - SINGLE / DOUBLE FIXTURE PEDESTRIAN LIGHT ⊠ - ELECTRICAL JUNCTION BOX • - ELECTRICAL OUTLET ECO - ELECTRICAL CONDUIT OE - OVERHEAD ELECTRIC LINE ← - ANCHOR ⊠ - TRAFFIC CONTROL LIGHT ⊠ - RAILROAD CROSSING GATE FO - FIBER OPTIC LINE ⊙ - MANHOLE C.O.O - CLEAN OUT ⊕ - FIRE HYDRANT WVO - WATER VALVE WMO - WATER METER WSO - WATER SERVICE SHUTOFF | <ul style="list-style-type: none"> —○— - STORM SEWER & MANHOLE —□— - STORM SEWER & INLET GV - GAS VALVE GM - GAS METER --- - ROW - RIGHT-OF-WAY LINE • - POST ◇ - MONITORING WELL ○ - SIGN ○ - ORNAMENTAL CONTAINER ⊗ - ORNAMENTAL SHRUB ⊗ - TREE TC - TOP OF CASTING - TOP OF CURB INV. - INVERT FL - FLOW LINE ▨ - PROPOSED CROSSWALK PAVEMENT IMPRINTING (SEE DETAIL ON SHEET 2) ▨ - PROPOSED HOT-MIX ASPHALT OVERLAY |
|--|--|