



Illinois Department of Transportation

Division of Aeronautics

1 Langhorne Bond Drive / Capital Airport / Springfield, Illinois / 62707-8415

April 18, 2014

SUBJECT: Morris Municipal Airport
Morris, Illinois
Grundy County
Illinois Project No. C09-4089
SBG Project No. 3-17-0071-B16
Contract No. MR021
Item No. 16A, April 25, 2014 Letting
Addendum A

NOTICE TO PROSPECTIVE BIDDERS

Attached is an addendum to the plans or proposal. This addendum involves revised and/or added material.

1. Replace the original Schedule of Prices, dated 04/01/14, with the revised Schedule of Prices, dated 04/17/14.
2. Replace the original Table of Contents, Page 3, with the attached revised Table of Contents in the Special Provisions.
3. Add new Pages 19 and 20 to the Special Provisions.
4. Add new Exhibit C to the Special Provisions.
5. Replace Sheet 2 of the Plans with the revised Sheet 2, dated 4/17/14.

Prime contractors must utilize the enclosed material when preparing their bid and must include any Schedule of Prices changes in their bidding proposal.

Bidders using computer-generated bids are cautioned to reflect any and all Schedule of Prices changes, if involved, into their computer programs.

Questions on this addendum may be directed to Robert T. Schmude, P.E. of Chamlin & Associates at (815) 942-1402.

STATE JOB # - - -

ILLINOIS DEPARTMENT OF TRANSPORTATION
 SCHEDULE OF PRICES
 CONTRACT NUMBER - MR021

ECMS002 DTGECM03 ECMR003 PAGE 1
 RUN DATE - 04/17/14
 RUN TIME - 183118

COUNTY NAME	CODE	DIST	AIRPORT NAME	FED PROJECT	ILL PROJECT
GRUNDY	063	03	MORRIS MUNICIPAL	3-17-0071-B16	C0-9 -4089

ITEM NUMBER	PAY ITEM DESCRIPTION	UNIT OF MEASURE	QUANTITY	UNIT PRICE		TOTAL PRICE	
				DOLLARS	CENTS	DOLLARS	CTS
AR108158	1/C #8 5 KV UG CABLE IN UD	L.F.	4,834.000 X		=		
AR110504	4-WAY CONCRETE ENCASED DUCT	L.F.	41.000 X		=		
AR125410	MITL-STAKE MOUNTED	EACH	27.000 X		=		
AR125415	MITL-BASE MOUNTED	EACH	4.000 X		=		
AR125441	TAXI GUIDANCE SIGN, 1 CHARACTER	EACH	2.000 X		=		
AR125442	TAXI GUIDANCE SIGN, 2 CHARACTER	EACH	1.000 X		=		
AR125470	MODIFY EXISTING SIGN PANEL	EACH	3.000 X		=		
AR125505	MIRL, STAKE MOUNTED	EACH	5.000 X		=		
AR125510	MIRL, BASE MOUNTED	EACH	2.000 X		=		
AR125901	REMOVE STAKE MOUNTED LIGHT	EACH	5.000 X		=		
AR125961	RELOCATE STAKE MOUNTED LIGHT	EACH	6.000 X		=		
AR125964	RELOCATE TAXI GUIDANCE SIGN	EACH	1.000 X		=		
AR125967	RELOCATE REILS	PAIR	1.000 X		=		
AR150510	ENGINEER'S FIELD OFFICE	L.S.	1.000 X		=		
AR150560	TEMPORARY THRESHOLD	L.S.	1.000 X		=		

MORRIS MUNICIPAL
GRUNDY

ILLINOIS DEPARTMENT OF TRANSPORTATION
SCHEDULE OF PRICES
CONTRACT NUMBER - MR021

ECMS002 DTGECM03 ECMR003 PAGE 2
RUN DATE - 04/17/14
RUN TIME - 183118

ITEM NUMBER	PAY ITEM DESCRIPTION	UNIT OF MEASURE	QUANTITY	UNIT PRICE		TOTAL PRICE	
				DOLLARS	CENTS	DOLLARS	CTS
AR152410	UNCLASSIFIED EXCAVATION	C.Y.	44,867.000	X	=		
AR155540	BY-PRODUCT LIME	TON	250.000	X	=		
AR155712	LIME-MODIFIED SUBGRADE-12"	S.Y.	9,820.000	X	=		
AR156510	SILT FENCE	L.F.	500.000	X	=		
AR156511	DITCH CHECK	EACH	12.000	X	=		
AR156544	RIPRAP-GRADATION NO. 4	S.Y.	23.000	X	=		
AR162508	CLASS E FENCE 8'	L.F.	5,450.000	X	=		
AR162624	CLASS E GATE-24'	EACH	3.000	X	=		
AR201610	BITUMINOUS BASE COURSE	TON	3,769.000	X	=		
AR201630	BITUMINOUS BASE TEST SECTION	EACH	1.000	X	=		
AR209606	CRUSHED AGG. BASE COURSE - 6"	S.Y.	8,573.000	X	=		
AR401610	BITUMINOUS SURFACE COURSE	TON	804.000	X	=		
AR401650	BITUMINOUS PAVEMENT MILLING	S.Y.	1,078.000	X	=		
AR602510	BITUMINOUS PRIME COAT	GAL.	2,945.000	X	=		
AR603510	BITUMINOUS TACK COAT	GAL.	932.000	X	=		

MORRIS MUNICIPAL
GRUNDY

ILLINOIS DEPARTMENT OF TRANSPORTATION
SCHEDULE OF PRICES
CONTRACT NUMBER - MR021

ECMS002 DTGECM03 ECMR003 PAGE 3
RUN DATE - 04/17/14
RUN TIME - 183118

ITEM NUMBER	PAY ITEM DESCRIPTION	UNIT OF MEASURE	QUANTITY	UNIT PRICE		TOTAL PRICE	
				DOLLARS	CENTS	DOLLARS	CTS
AR620520	PAVEMENT MARKING-WATERBORNE	S.F.	16,970.000 X		=		
AR620900	PAVEMENT MARKING REMOVAL	S.F.	10,716.000 X		=		
AR625510	TAR EMULSION SEAL COAT	S.Y.	1,111.000 X		=		
AR701524	24" RCP, CLASS IV	L.F.	97.000 X		=		
AR705526	6" PERFORATED UNDERDRAIN W/SOCK	L.F.	2,880.000 X		=		
AR705630	UNDERDRAIN INSPECTION HOLE	EACH	15.000 X		=		
AR751550	MANHOLE 5'	EACH	1.000 X		=		
AR752424	PRECAST REINFORCED CONC. FES 24"	EACH	2.000 X		=		
AR801302	NEENAH R4341-A GRATE	EACH	1.000 X		=		
AR801308	EROSION CONTROL BLANKET	S.Y.	7,259.000 X		=		
AR801338	8" ORIFICE RESTRICTOR PLATE	EACH	1.000 X		=		
AR901510	SEEDING	ACRE	24.000 X		=		
AR908510	MULCHING	ACRE	24.000 X		=		

TOTAL \$

--	--

NOTE:
*** PLEASE TURN PAGE FOR IMPORTANT NOTES ***

MORRIS MUNICIPAL
GRUNDY

ILLINOIS DEPARTMENT OF TRANSPORTATION
SCHEDULE OF PRICES
CONTRACT NUMBER - MR021

ECMS002 DTGECM03 ECMR003 PAGE 4
RUN DATE - 04/17/14
RUN TIME - 183118

NOTE:

1. EACH PAY ITEM SHOULD HAVE A UNIT PRICE AND A TOTAL PRICE.
2. THE UNIT PRICE SHALL GOVERN IF NO TOTAL PRICE IS SHOWN OR IF THERE IS A DISCREPANCY BETWEEN THE PRODUCT OF THE UNIT PRICE MULTIPLIED BY THE QUANTITY.
3. IF A UNIT PRICE IS OMITTED, THE TOTAL PRICE WILL BE DIVIDED BY THE QUANTITY IN ORDER TO ESTABLISH A UNIT PRICE.
4. A BID MAY BE DECLARED UNACCEPTABLE IF NEITHER A UNIT PRICE NOR A TOTAL PRICE IS SHOWN.

INDEX TO SPECIAL PROVISIONS

<u>ITEM</u>	<u>DESCRIPTION</u>	<u>PAGE NUMBER</u>
<u>DIVISION I</u>	<u>GENERAL PROVISIONS</u>	4
<u>DIVISION II</u>	<u>SPECIAL PROVISIONS</u>	9
AR 150510	ENGINEER'S FIELD OFFICE	9
AR 150560	TEMPORARY THRESHOLD	9
AR 152410	UNCLASSIFIED EXCAVATION	10
AR 156510	SILT FENCE	11
AR 156511	DITCH CHECK	12
AR 156544	RIPRAP – GRADATION NO. 4	13
AR 209606	CRUSHED AGG. BASE COURSE - 6"	14
AR 751550	MANHOLE, 5'	15
AR 801308	EROSION CONTROL BLANKET	15
AR801338	8" ORIFICE RESTRICTOR PLATE	17
AR 125441*	TAXI GUIDANCE SIGN	19
AR 125964	RELOCATE REILS	20
AR 155540	BY-PRODUCT LIME	20
SUBSURFACE INVESTIGATION REPORT		EXHIBIT A
BDE SPECIAL PROVISIONS		EXHIBIT B
MORRIS AIRPORT DETAILS		EXHIBIT C

* This Special Provision also includes AR125442, AR125470 and AR125964

ITEM AR125441, AR125442, AR125470, AR125964

TAXI GUIDANCE SIGN

Item 125 is modified as outlined below:

MATERIALS

125-2.11

Add the following:

Runway and Taxiway Guidance signs and panels shall be Type L-858, Size 1 and Style 3 to match existing signage.

CONSTRUCTION METHODS

125-3.1

Add the following:

Exhibit C of the Special Provisions contains a Runway Exit and Taxiway Guidance Sign Detail which contains dimensions and a typical layout of the sign system.

METHOD OF MEASUREMENT

125-4.1

Add the following:

The quantity of modified sign panels to be paid for under Item AR125470 – MODIFY EXISTING SIGN PANEL as identified in the Legend Panels for Taxiway Guidance/Runway Exit Signs on Sheet 11 of the Plans should be the number of each individual sign panel changed (removed and replaced).

BASIS OF PAYMENT

125-5.1

Add the following:

Payment for changed sign panels will be made under:
Item AR125470 - Modify Existing Sign Panel - per EACH

ITEM AR125964

RELOCATE REILS

Item 125 is modified as outlined below:

MATERIALS

125-2.11

Add the following:

The existing REILS to be relocated are L-849 REILs Model Number 44A1161-41 manufactured by ADB Airfield Solutions.

CONSTRUCTION METHODS

125-3.1

Add the following:

Exhibit C of the Special Provisions contains a R.E.I.L.S. Detail which contains dimensions and a typical layout of the sign system that shall be relocated.

ITEM AR155540

BY-PRODUCT LIME

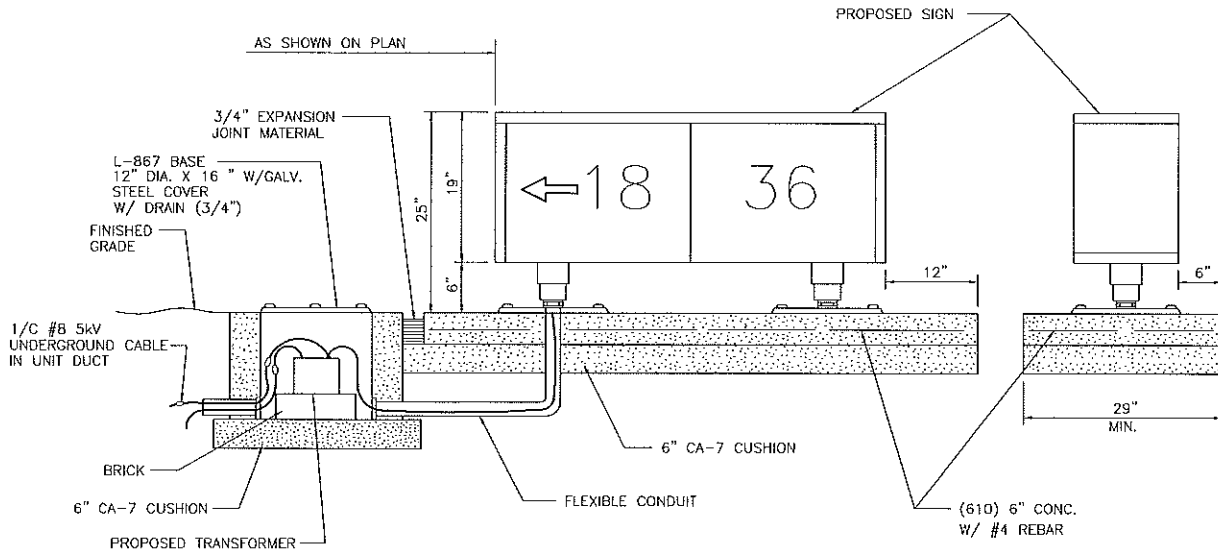
Item 155 is modified as outlined below:

MATERIALS

155-2

Add the following:

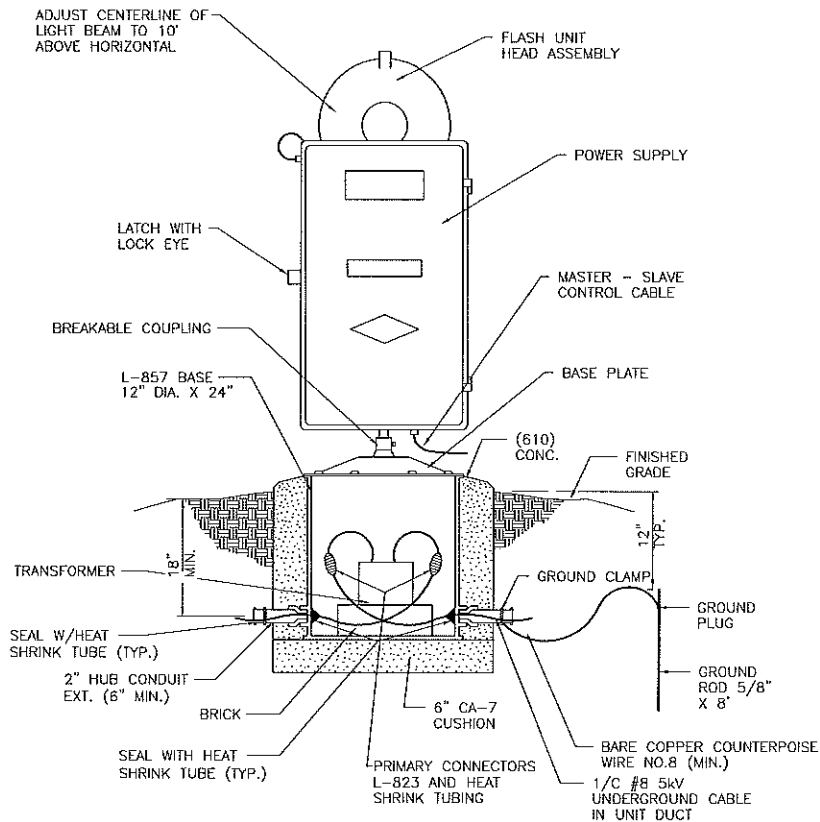
By-Product, Non-Hydrated Lime shall be used and shall comply with 155-2.3



RUNWAY EXIT AND TAXIWAY GUIDANCE SIGN DETAIL

NOT TO SCALE

NOTE: FOR TAXIWAY GUIDANCE & RUNWAY EXIT SIGN DATA SEE ELECTRICAL LIGHTING PLAN



R.E.I.L.S. DETAIL

NOT TO SCALE

CHAMLIN & ASSOCIATES, INC. CONSULTING ENGINEERS & LAND SURVEYORS PERU ILLINOIS MORRIS		
SCALE: 1"=120'		MORRIS AIRPORT DETAILS
DATE: 04/17/14	DRAWN BY: MAB	FILE NO.: EXHIBIT C

SUMMARY OF QUANTITIES				
ITEM	DESCRIPTION	UNIT	ESTIMATED QUANTITY	RECORD QUANTITY
AR 108158	1/C #8 5 KV UG CABLE IN UD	L.F.	4,834	0
AR 110504	4-WAY CONCRETE ENCASED DUCT	L.F.	41	0
AR 125410	MITL - STAKE MOUNTED	EACH	27	0
AR 125415	MITL - BASE MOUNTED	EACH	4	0
AR 125441	TAXI GUIDANCE SIGN, 1 CHARACTER	EACH	2	0
AR 125442	TAXI GUIDANCE SIGN, 2 CHARACTER	EACH	1	0
AR 125470	MODIFY EXISTING SIGN PANEL	EACH	3	0
AR 125505	MIRL, STAKE MOUNTED	EACH	5	0
AR 125510	MIRL, BASE MOUNTED	EACH	2	0
AR 125901	REMOVE STAKE MOUNTED LIGHT	EACH	5	0
AR 125961	RELOCATE STAKE MOUNTED LIGHT	EACH	6	0
AR 125964	RELOCATE TAXI GUIDANCE SIGN	EACH	1	0
AR 125967	RELOCATE REILS	PAIR	1	0
AR 150510	ENGINEER'S FIELD OFFICE	L.S.	1	0
AR 150560	TEMPORARY THRESHOLD	L.S.	1	0
AR 152410	UNCLASSIFIED EXCAVATION	C.Y.	44,867	0
AR 155540	BY-PRODUCT LIME	TON	250	0
AR 155712	LIME-MODIFIED SUBGRADE - 12"	S.Y.	9,820	0
AR 156510	SILT FENCE	L.F.	500	0
AR 156511	DITCH CHECK	EACH	12	0
AR 156544	RIPRAP - GRADATION NO. 4	S.Y.	23	0
AR 162508	CLASS E FENCE, 8'	L.F.	5,450	0
AR 162624	CLASS E GATE, 24'	EACH	3	0
AR 201610	BITUMINOUS BASE COURSE	TON	3,769	0
AR 201630	BITUMINOUS BASE TEST SECTION	EACH	1	0
AR 209606	CRUSHED AGG. BASE COURSE - 6"	S.Y.	8,573	0
AR 401610	BITUMINOUS SURFACE COURSE	TON	804	0
AR 401650	BITUMINOUS PAVEMENT MILLING	S.Y.	1,078	0
AR 602510	BITUMINOUS PRIME COAT	GAL.	2,945	0
AR 603510	BITUMINOUS TACK COAT	GAL.	932	0
AR 620520	PAVEMENT MARKING - WATERBORNE	S.F.	16,970	0
AR 620900	PAVEMENT MARKING REMOVAL	S.F.	10,716	0
AR 625510	TAR EMULSION SEAL COAT	S.Y.	1,111	0
AR 701524	24" RCP, CLASS IV	L.F.	97	0
AR 705526	6" PERFORATED UNDERDRAIN W/SOCK	L.F.	2,880	0
AR 705630	UNDERDRAIN INSPECTION HOLE	EACH	15	0
AR 751550	MANHOLE 5'	EACH	1	0
AR 752424	PRECAST REINFORCED CONC. FES 24"	EACH	2	0
AR 801302	NEENAH R4341-A GRATE	EACH	1	0
AR 801308	EROSION CONTROL BLANKET	S.Y.	7,259	0
AR 801338	8" ORIFICE RESTRICTOR PLATE	EACH	1	0
AR 901510	SEEDING	ACRE	24	0
AR 908510	MULCHING	ACRE	24	0

CHAMBLIN & ASSOCIATES, INC. © 2009
Drawing Name: H:\AUGER\1\1002-78\c3d\002-500.dwg Last Modified: Apr 17, 2014 - 2:21pm Plotted on: Apr 17, 2014 - 2:24pm by roberta

DRAWN BY: RGP	REVISIONS			
CHECKED BY: RTS	LEVEL	BY	DATE	DESCRIPTION
CREATED: 3/18/14	1	RGP	3/21/14	100% SET FOR IDA APPROVAL
	2	RTS	4/17/14	ADDENDUM A

CHAMBLIN & ASSOCIATES
PERU MORRIS ILLINOIS

MORRIS MUNICIPAL AIRPORT
MORRIS, ILLINOIS

SUMMARY OF QUANTITIES

APPROVED
FOR CONSTRUCTION

CURRENT AS OF: 4/17/14	
SCALE: 1 = 300	SHEET 2
FILE NO.: 13128	OF 25