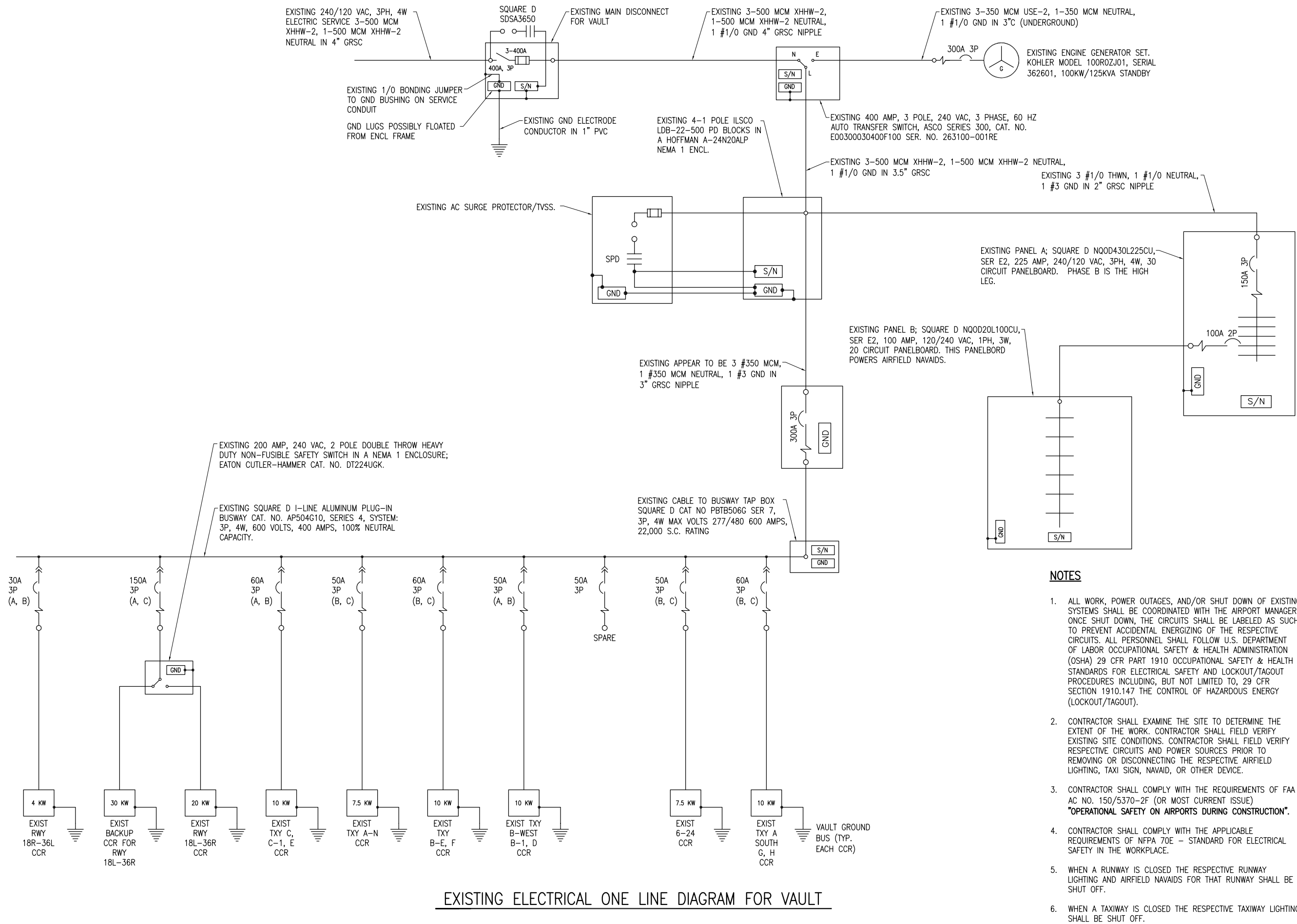


**SOUTHERN ILLINOIS
AIRPORT**

**MURPHYSBORO /
CARBONDALE,
ILLINOIS**



NOTES

- ALL WORK, POWER OUTAGES, AND/OR SHUT DOWN OF EXISTING SYSTEMS SHALL BE COORDINATED WITH THE AIRPORT MANAGER. ONCE SHUT DOWN, THE CIRCUITS SHALL BE LABELED AS SUCH TO PREVENT ACCIDENTAL ENERGIZING OF THE RESPECTIVE CIRCUITS. ALL PERSONNEL SHALL FOLLOW U.S. DEPARTMENT OF LABOR OCCUPATIONAL SAFETY & HEALTH ADMINISTRATION (OSHA) 29 CFR PART 1910 OCCUPATIONAL SAFETY & HEALTH STANDARDS FOR ELECTRICAL SAFETY AND LOCKOUT/TAGOUT PROCEDURES INCLUDING, BUT NOT LIMITED TO, 29 CFR SECTION 1910.147 THE CONTROL OF HAZARDOUS ENERGY (LOCKOUT/TAGOUT).
- CONTRACTOR SHALL EXAMINE THE SITE TO DETERMINE THE EXTENT OF THE WORK. CONTRACTOR SHALL FIELD VERIFY EXISTING SITE CONDITIONS. CONTRACTOR SHALL FIELD VERIFY RESPECTIVE CIRCUITS AND POWER SOURCES PRIOR TO REMOVING OR DISCONNECTING THE RESPECTIVE AIRFIELD LIGHTING, TAXI SIGN, NAVAID, OR OTHER DEVICE.
- CONTRACTOR SHALL COMPLY WITH THE REQUIREMENTS OF FAA AC NO. 150/5370-2F (OR MOST CURRENT ISSUE) **"OPERATIONAL SAFETY ON AIRPORTS DURING CONSTRUCTION"**.
- CONTRACTOR SHALL COMPLY WITH THE APPLICABLE REQUIREMENTS OF NFPA 70E - STANDARD FOR ELECTRICAL SAFETY IN THE WORKPLACE.
- WHEN A RUNWAY IS CLOSED THE RESPECTIVE RUNWAY LIGHTING AND AIRFIELD NAVAIDS FOR THAT RUNWAY SHALL BE SHUT OFF.
- WHEN A TAXIWAY IS CLOSED THE RESPECTIVE TAXIWAY LIGHTING SHALL BE SHUT OFF.

REMOVE TAXIWAY D

IDA No: MDH-4304

Contract No:

SBG No: SBG-TBD

NO.	DATE	DESCRIPTION		
		LAY	DWN	REV

ISSUE: MARCH 07, 2014
PROJECT NO: 13A0083D
CAD FILE: E-601-LINE.DWG
LAYOUT BY: KNL 02/27/2012
DRAWN BY: CWS 02/28/2012
REVIEWED BY: JSL 03/05/2014
© Copyright Hanson Professional Services Inc. 2014
SHEET TITLE

**EXISTING
ELECTRICAL ONE
LINE DIAGRAM FOR
VAULT**

MAR 06, 2014 3:13 PM SCHUB01446 p:\c\sp\9\3\36.hanson.com\Projects\Documents\13\0083\13A0083D\CAD\Airport\SheetE-601-LINE