



Illinois Department of Transportation

Division of Aeronautics

1 Langhorne Bond Drive / Capital Airport / Springfield, Illinois / 62707-8415

April 22, 2014

SUBJECT: St. Louis Regional Airport
East Alton, Illinois
Madison County
Illinois Project Number: ALN-4139
SBG Project Number: 3-17-0002-B48
Contract No. SR087
Item No. 12A, April 25, 2014 Letting
Addendum A

NOTICE TO PROSPECTIVE BIDDERS

Attached is an addendum to the plans or proposal. This addendum involves revised and/or added material.

Reason for Addendum:

Clarification of Plans related to Item AR151450 Clearing & Grubbing. Notes revised and added related to concrete debris removal work.

To All Plan Holders:

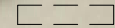
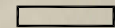
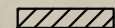
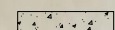
Replace Plan Sheet 6 with the Revised Plan Sheet 6, attached to this Addendum A.

Prime contractors must utilize the enclosed material when preparing their bid and must include any Schedule of Prices changes in their bidding proposal.

Bidders using computer-generated bids are cautioned to reflect any and all Schedule of Prices changes, if involved, into their computer programs.

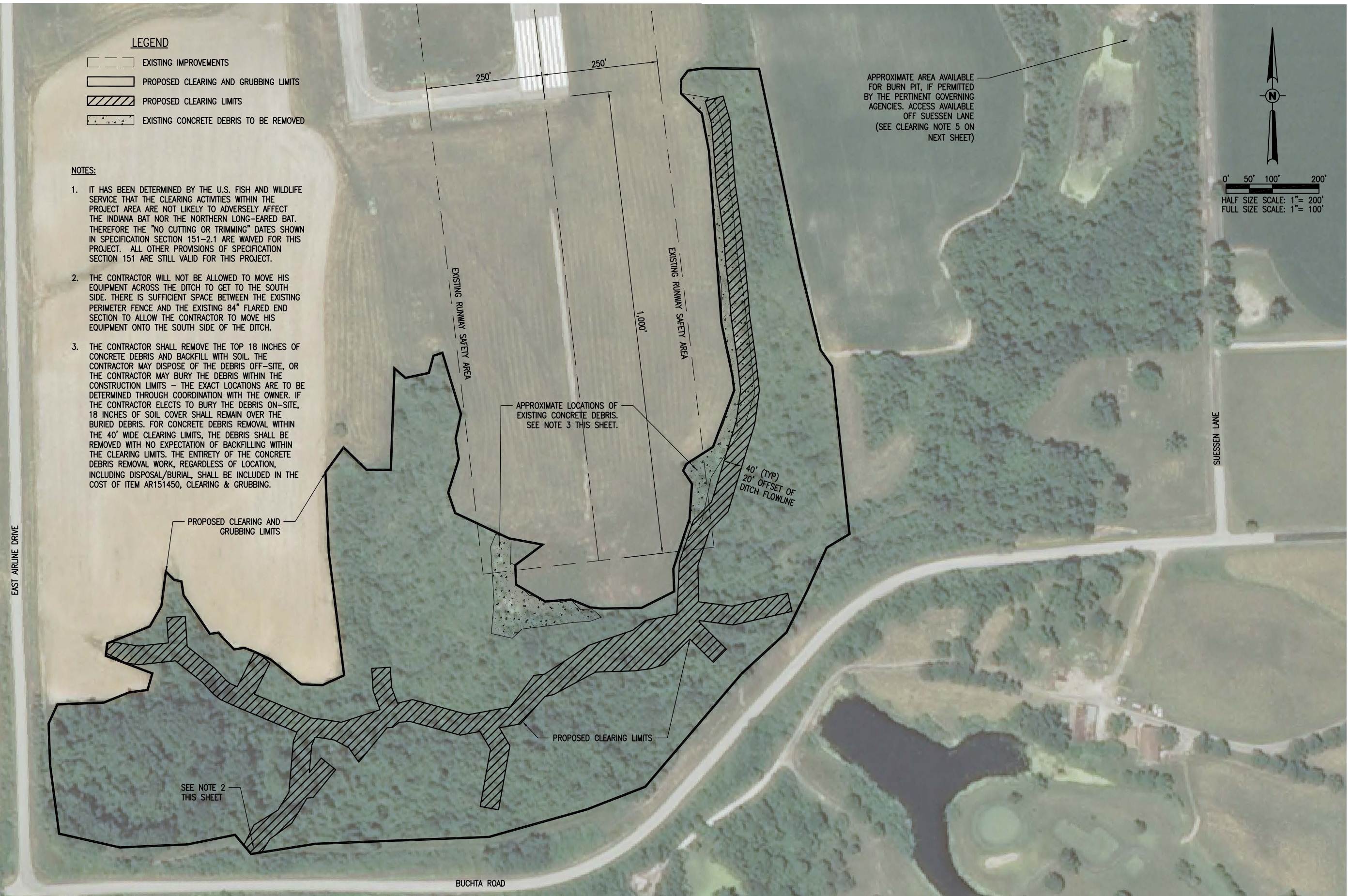
Questions on this addendum may be directed to Barry Stolz, P.E. of Hanson Professional Services, Inc. at 314-942-5288.

LEGEND

-  EXISTING IMPROVEMENTS
-  PROPOSED CLEARING AND GRUBBING LIMITS
-  PROPOSED CLEARING LIMITS
-  EXISTING CONCRETE DEBRIS TO BE REMOVED

NOTES:

1. IT HAS BEEN DETERMINED BY THE U.S. FISH AND WILDLIFE SERVICE THAT THE CLEARING ACTIVITIES WITHIN THE PROJECT AREA ARE NOT LIKELY TO ADVERSELY AFFECT THE INDIANA BAT NOR THE NORTHERN LONG-EARED BAT. THEREFORE THE "NO CUTTING OR TRIMMING" DATES SHOWN IN SPECIFICATION SECTION 151-2.1 ARE WAIVED FOR THIS PROJECT. ALL OTHER PROVISIONS OF SPECIFICATION SECTION 151 ARE STILL VALID FOR THIS PROJECT.
2. THE CONTRACTOR WILL NOT BE ALLOWED TO MOVE HIS EQUIPMENT ACROSS THE DITCH TO GET TO THE SOUTH SIDE. THERE IS SUFFICIENT SPACE BETWEEN THE EXISTING PERIMETER FENCE AND THE EXISTING 84" FLARED END SECTION TO ALLOW THE CONTRACTOR TO MOVE HIS EQUIPMENT ONTO THE SOUTH SIDE OF THE DITCH.
3. THE CONTRACTOR SHALL REMOVE THE TOP 18 INCHES OF CONCRETE DEBRIS AND BACKFILL WITH SOIL. THE CONTRACTOR MAY DISPOSE OF THE DEBRIS OFF-SITE, OR THE CONTRACTOR MAY BURY THE DEBRIS WITHIN THE CONSTRUCTION LIMITS - THE EXACT LOCATIONS ARE TO BE DETERMINED THROUGH COORDINATION WITH THE OWNER. IF THE CONTRACTOR ELECTS TO BURY THE DEBRIS ON-SITE, 18 INCHES OF SOIL COVER SHALL REMAIN OVER THE BURIED DEBRIS. FOR CONCRETE DEBRIS REMOVAL WITHIN THE 40' WIDE CLEARING LIMITS, THE DEBRIS SHALL BE REMOVED WITH NO EXPECTATION OF BACKFILLING WITHIN THE CLEARING LIMITS. THE ENTIRETY OF THE CONCRETE DEBRIS REMOVAL WORK, REGARDLESS OF LOCATION, INCLUDING DISPOSAL/BURIAL, SHALL BE INCLUDED IN THE COST OF ITEM AR151450, CLEARING & GRUBBING.



APPROXIMATE AREA AVAILABLE FOR BURN PIT, IF PERMITTED BY THE PERTINENT GOVERNING AGENCIES. ACCESS AVAILABLE OFF SUESSEN LANE (SEE CLEARING NOTE 5 ON NEXT SHEET)


APPROXIMATE LOCATIONS OF EXISTING CONCRETE DEBRIS. SEE NOTE 3 THIS SHEET.

40' (TYP) 20' OFFSET OF DITCH FLOWLINE

SEE NOTE 2 THIS SHEET

APR 22, 2014, 11:31 AM STOL201547
 p:\s\spi--svr306.hanson.dom\hanson_projects\Documents\11\11A00980\CAD\Airport\Sheet\C-191-P CLEARING

REVISION	DATE	DESCRIPTION
1	4/22/14	REVISED CONCRETE REMOVAL NOTES

ST. LOUIS REGIONAL AIRPORT

 EAST ALTON, ILLINOIS
 BLOCK GRANT PROJ.: 3-17-0002-B48
 ILL. PROJ.: ALN-4139

Hanson Project No.	11A00980
Filename	C-191-P CLEARING.dwg
Scale	1" = 100'
Date	01/31/14
LAYOUT	JRH 01/29/14
DRAWN	JRH 01/29/14
REVIEWED	BSS 01/29/14

HANSON
 © Copyright Hanson Professional Services Inc. 2014
 Hanson Professional Services Inc.
 1525 South Sixth Street
 Springfield, Illinois 62703-2886
 Ph: (217) 788-2450 Fax: (217) 788-2503
 www.hanson-inc.com
 Offices Nationwide

CLEARING, GRADING,
 AND DRAINAGE TO
 RUNWAY 35 RSA
 PROPOSED CLEARING PLAN