

**STATE OF ILLINOIS**  
**DEPARTMENT OF TRANSPORTATION**

F.A.I. RTE.	SECTION	COUNTY	TOTAL SHEETS	SHEET NO.
70	D7 PATCHING 2025-2	FAYETTE	6	1
		ILLINOIS	CONTRACT NO. 74D27	

D-97-066-24

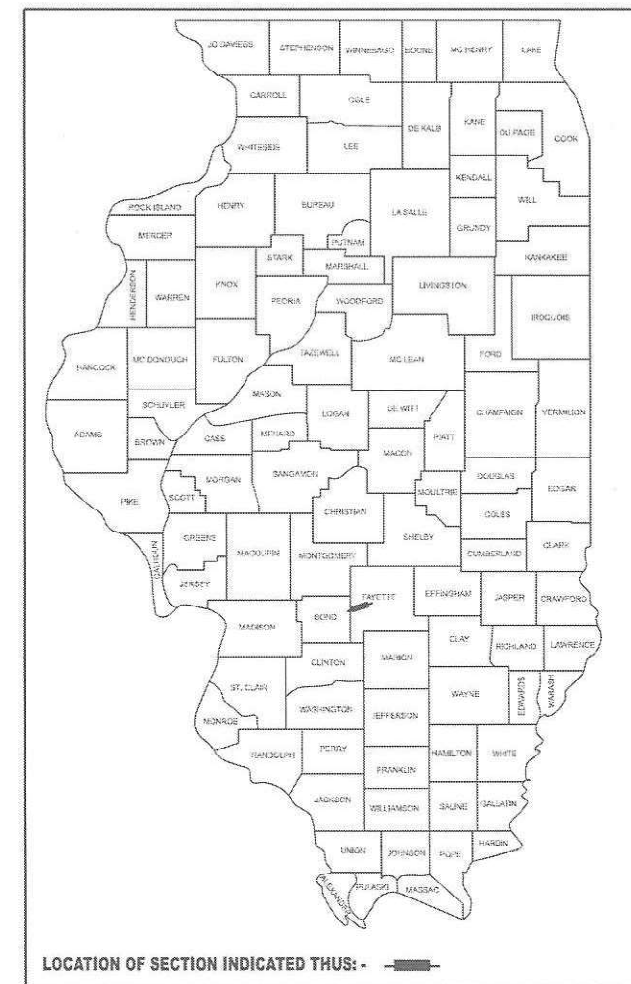
FOR INDEX OF SHEETS, SEE SHEET NO. 2

ADT (2023) = 25,800

# PROPOSED HIGHWAY PLANS

**FAI ROUTE (I 70)**  
**SECTION D7 PATCHING 2025-2**  
**PATCHING**  
**FAYETTE COUNTY**

C-97-101-24

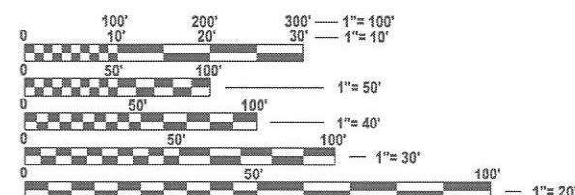


**RURAL/URBAN**  
**MP 58.9**

**BOND/FAYETTE CL**  
**CONTRACT START:**  
**MP 52.8**

**RURAL/URBAN**  
**MP 63.4**

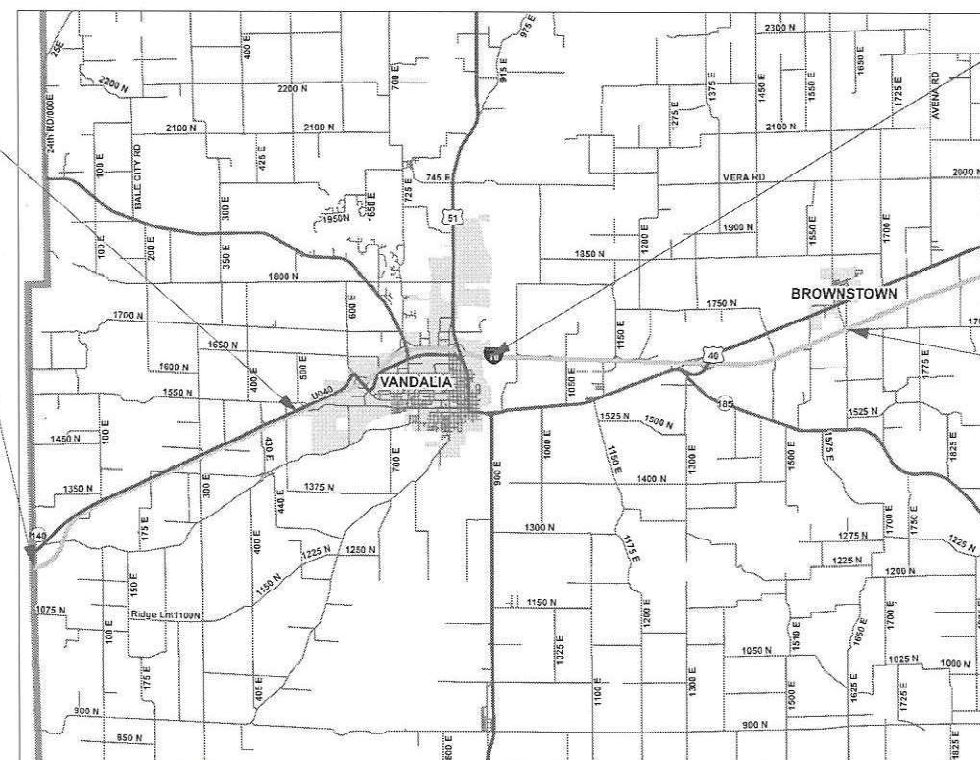
**CONTRACT END:**  
**MP 70.8**



FULL SIZE PLANS HAVE BEEN PREPARED USING STANDARD ENGINEERING SCALES. REDUCED SIZED PLANS WILL NOT CONFORM TO STANDARD SCALES. IN MAKING MEASUREMENTS ON REDUCED PLANS, THE ABOVE SCALES MAY BE USED.

**J.U.L.I.E.**  
**JOINT UTILITY LOCATION INFORMATION FOR EXCAVATION**  
1-800-392-0123  
OR 811

**PROJECT ENGINEER: BRIAN BIERMAN**  
**PROJECT MANAGER: JACQUELYN SEALS**

**CONTRACT NO. 74D27**

GROSS LENGTH = 95,040 FT. = 18 MILE

STATE OF ILLINOIS  
DEPARTMENT OF TRANSPORTATION

SUBMITTED JANUARY 10 2025  
Lora Rensing REGIONAL ENGINEER  
March 21 2025  
[Signature] ENGINEER OF DESIGN AND ENVIRONMENT  
March 21 2025  
[Signature] 5  
DIRECTOR OF HIGHWAYS PROJECT IMPLEMENTATION

**PRINTED BY THE AUTHORITY  
OF THE STATE OF ILLINOIS**

MODEL: Untitled [Sheet]  
FILE NAME: c:\pwworksp\dotill\ejd1012938\DOT74D27-ahh-index.dgn

**GENERAL NOTES**

THIS I-70 PATCHING CONTRACT CONSISTS OF CLASS A (SPECIAL) PATCHING FROM THE BOND/FAYETTE COUNTY LINE TO 0.2 MILES EAST OF US 51 AND EAST OF TR 342 (BROWNSTOWN RD) TO 1 MILE EAST AND ANY OTHER WORK NECESSARY TO COMPLETE THIS SECTION.

THE ACTUAL LOCATIONS AND QUANTITIES SHALL BE DETERMINED BY THE ENGINEER IN THE FIELD.

PATCHING REINFORCEMENT AND ALL THE TIE BARS WILL BE #6 TIE BARS.

THE CONTRACTOR SHALL NOTIFY KEITH DONOVAN (FROM IDOT CENTRAL OFFICE IN CHARGE OF WEIGH STATIONS) PRIOR TO BEGINNING WORK AT THE EAST END OF THE PROJECT. AN EXISTING WIM SENSOR IS LOCATED IN THIS AREA AND MY NEED REPLACED AFTER PATCHING.

INDEX OF SHEETS	
SHEET NO.	ITEM
1	COVER SHEET
2	GENERAL NOTES, INDEX OF SHEETS & LIST OF STANDARDS
3	SUMMARY OF QUANTITIES
4	SCHEDULE OF QUANTITIES
5-6	CLASS A PATCHES (SPECIAL) DETAILS

THE FOLLOWING STANDARDS ARE A PART OF THESE PLANS AND ARE INCLUDED FOLLOWING THE LAST NUMBERED SHEET OF THE PLANS.

STANDARD NO.	DESCRIPTION
000001-08	STANDARD SYMBOLS, ABBREVIATIONS AND PATTERNS
001001-02	AREAS OF REINFORCEMENT BARS
001006	DECIMAL OF AN INCH AND OF A FOOT
420001-10	PAVEMENT JOINTS
421001-03	BAR REINFORCEMENT FOR CRC PAVEMENT
442001-04	CLASS A PATCHES
701101-05	OFF-RD OPERATIONS, MULTILANE, 15' TO 24" FROM PAVEMENT
701106-02	EDGE OFF-ROAD OPERATIONS, MULTILANE, MORE THAN 15' AWAY
701400-12	APPROACH TO LANE CLOSURE, FREEWAY/EXPRESSWAY
701401-13	LANE CLOSURE, FREEWAY/EXPRESSWAY
701411-09	LANE CLOSURE, MULTILANE, AT ENTRANCE OR EXIT RAMP, FOR SPEEDS >= 45 MPH
701428-01	TRAFFIC CONTROL, SETUP AND REMOVAL, FREEWAY/EXPRESSWAY
701901-10	TRAFFIC CONTROL DEVICES

REV - MS

	USER NAME = Brian.Bierman	DESIGNED -	REVISED -	STATE OF ILLINOIS DEPARTMENT OF TRANSPORTATION	GENERAL NOTES, INDEX OF SHEETS & LIST OF STANDARDS		FAI RTE	SECTION	COUNTY	TOTAL SHEETS	SHEET NO.
		DRAWN -	REVISED -				70	D7 PATCHING 2025-2	FAYETTE	6	2
		CHECKED -	REVISED -				CONTRACT NO. 74D27				
	PLOT DATE = 1/3/2025	DATE -	REVISED -				ILLINOIS   FED. AID PROJECT				
SCALE:		SHEET Untitled OF SHEETS		STA.		TO STA.					

MODEL: Untitled [Sheet]  
FILE NAME: c:\p\work\pwrtoillille\p1012038\D774DZ7-ahh-ecq.dgn

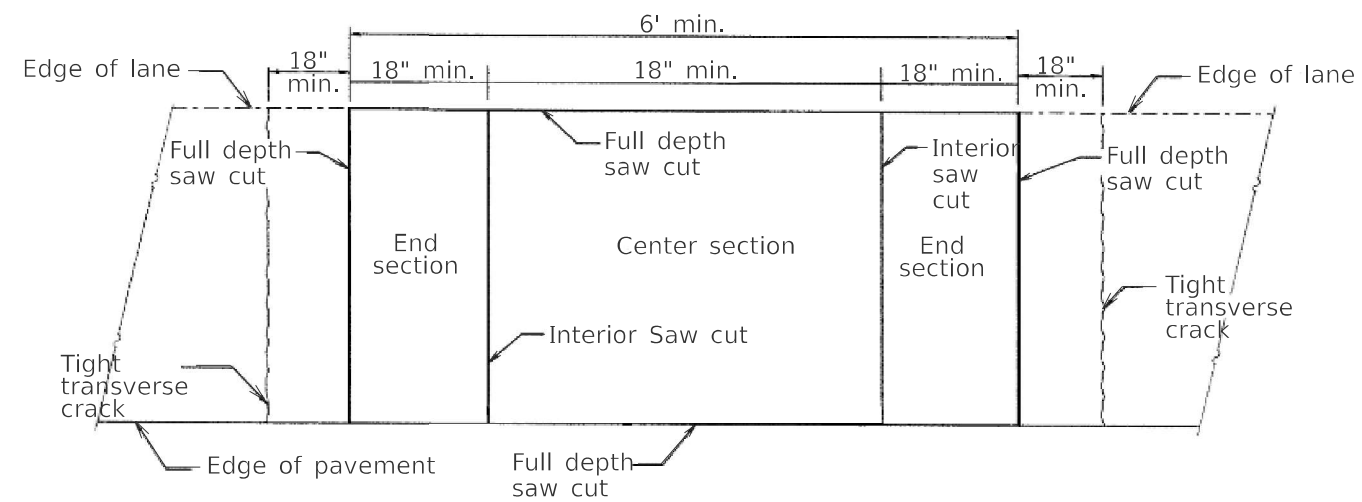
				100% STATE	
				CONSTRUCTION CODE	
CODE NO.	ITEM	UNIT	TOTAL QUANTITY	NONE	NONE
				0005	0005
				URBAN	RURAL
44213000	PATCHING REINFORCEMENT	SQ YD	867	170	697
44213200	SAW CUTS	FOOT	4386	1062	3324
44213204	TIE BARS 3/4"	EACH	127	9	118
67100100	MOBILIZATION	L SUM	1	0.5	0.5
70100420	TRAFFIC CONTROL AND PROTECTION, STANDARD 701411	EACH	3	3	0
70100800	TRAFFIC CONTROL AND PROTECTION, STANDARD 701401	L SUM	1	0.5	0.5
70103815	TRAFFIC CONTROL SURVEILLANCE	CAL DA	14	7	7
70107025	CHANGEABLE MESSAGE SIGN	CAL DA	28	14	14
X4420636	CLASS A PATCHES, TYPE I, 16 INCH (SPECIAL)	SQ YD	8	8	0
X4420638	CLASS A PATCHES, TYPE II, 16 INCH (SPECIAL)	SQ YD	492	135	357
X4420640	CLASS A PATCHES, TYPE III, 16 INCH (SPECIAL)	SQ YD	100	0	100
X4420641	CLASS A PATCHES, TYPE IV, 16 INCH (SPECIAL)	SQ YD	267	27	240

REV - MS

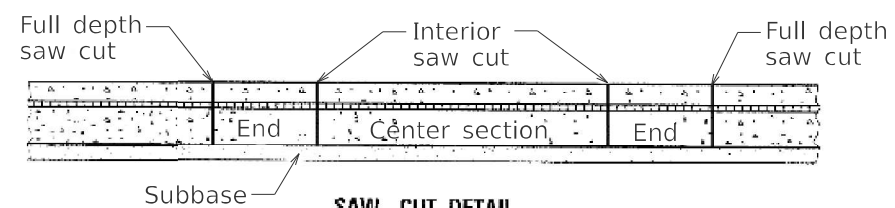
	USER NAME   = Brian.Bierman	DESIGNED   -	REVISED   -	STATE OF ILLINOIS DEPARTMENT OF TRANSPORTATION	SUMMARY OF QUANTITIES							F.A.I. RTE.	SECTION		COUNTY	TOTAL SHEETS	SHEET NO.
		DRAWN    -	REVISED   -									70	D7 PATCHING 2025-2		FAYETTE	6	3
		CHECKED   -	REVISED   -							CONTRACT NO. 74D27							
	PLOT DATE   = 1/8/2025	DATE       -	REVISED   -		SCALE:	SHEET	Untitled	OF	SHEETS	STA.	TO	STA.	ILLINOIS   FED. AID PROJECT				

MODEL: Untitled [Sheet]  
FILE NAME: c:\p\p\_work\pw\tdot\hillejad\1012538\D774DZ7-shl-schedules.dgn

I-70 MAINLINE PATCHING			URBAN/RURAL	CLASS A PATCHES, TYPE I, 16 INCH (SPECIAL)	CLASS A PATCHES, TYPE II, 16 INCH (SPECIAL)	CLASS A PATCHES, TYPE III, 16 INCH (SPECIAL)	CLASS A PATCHES, TYPE IV, 16 INCH (SPECIAL)	TIE BARS 3/4"	PATCHING REINFORCEMENT	SAW CUTS	TRAFFIC CONTROL AND PROTECTION, STANDARD 701411
				SQ YD	SQ YD	SQ YD	SQ YD	EACH	SQ YD	FOOT	EACH
EASTBOUND DRIVING LANE											
53.6	TO	55.8	RURAL	0	131	0	0	0	131	889	0
59.5	TO	62.3	URBAN	8	61	0	27	9	96	553	2
70.7	TO	70.8	RURAL	0	0	0	240	89	240	410	0
EASTBOUND PASSING LANE											
54.6	TO	55.8	RURAL	0	61	0	0	0	61	439	0
60.0	TO	62.2	URBAN	0	45	0	0	0	45	316	0
EASTBOUND TOTAL:				8	298	0	267	98	573	2607	2
WESTBOUND DRIVING LANE											
52.8	TO	58.8	RURAL	0	128	100	0	29	228	1332	0
60.5	TO	60.6	URBAN	0	21	0	0	0	21	131	1
WESTBOUND PASSING LANE											
52.8	TO	58.3	RURAL	0	37	0	0	0	37	254	0
60.5	TO	60.6	URBAN	0	8	0	0	0	8	62	0
WESTBOUND TOTAL:				0	194	100	0	29	294	1779	1
URBAN TOTALS:				8	135	0	27	9	170	1062	3
RURAL TOTALS:				0	357	100	240	118	697	3324	0
TOTALS:				8	492	100	267	127	867	4386	3



**PAVEMENT SAWING DETAIL**



**SAW CUT DETAIL**

### GENERAL NOTES

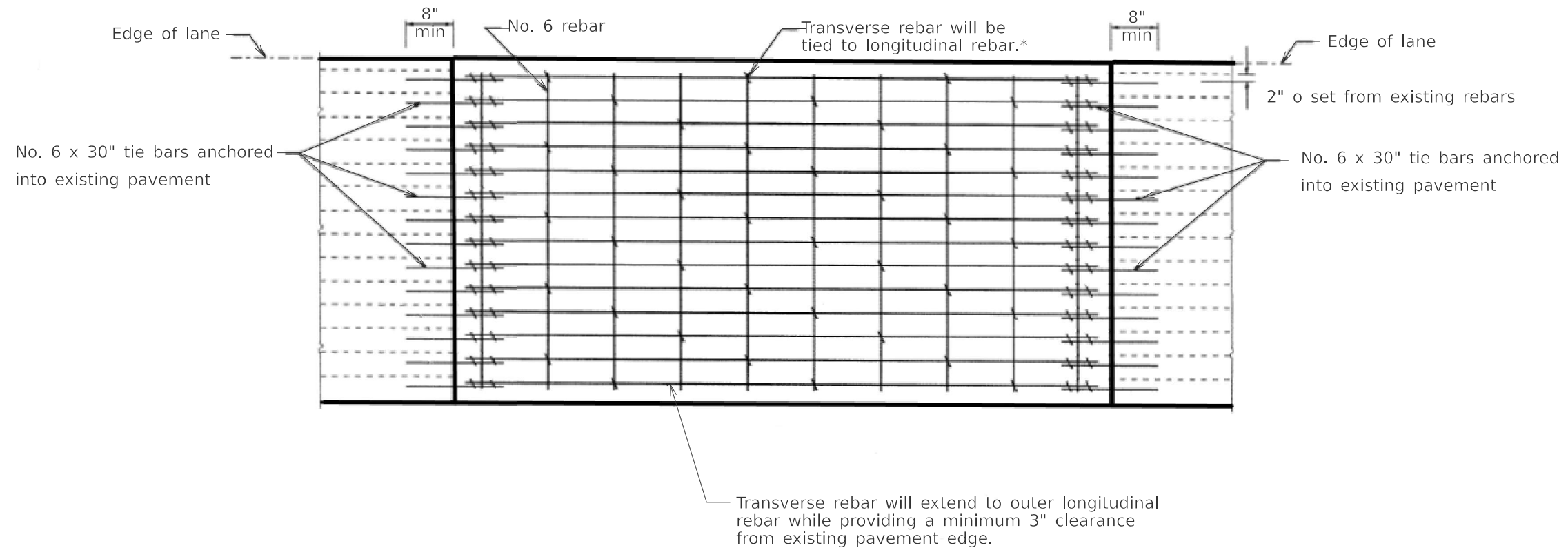
Interior saw cuts will be included in the cost of "CLASS A PATCHES (SPECIAL)."

When patching two adjacent lanes in one operation, the longitudinal joint shall be a longitudinal sawed joint as detailed on Standard 442001-04, however, the groove may be either preformed or sowed.

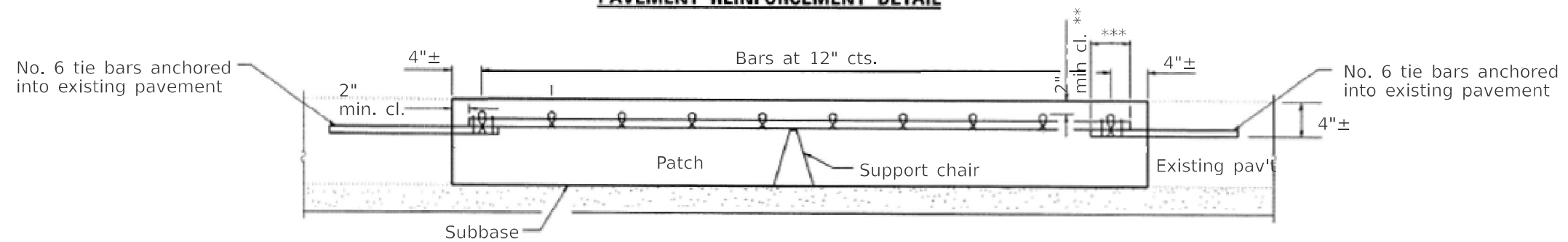
MODEL: Default  
FILE NAME: c:\p\work\p\work\hillead\101238\0774D27-shlr-patching\specialA.dgn

	USER NAME = Brian.Bierman	DESIGNED -	REVISED -	STATE OF ILLINOIS DEPARTMENT OF TRANSPORTATION	CLASS A PATCHES (SPECIAL)			F.A.I. RTE.	SECTION	COUNTY	TOTAL SHEETS	SHEET NO.
		DRAWN -	REVISED -					70	D7 PATCHING 2025-2	FAYETTE	6	5
	PLOT SCALE = \$SCALE\$	CHECKED -	REVISED -					CONTRACT NO. 74D27				
	PLOT DATE = 12/9/2024	DATE -	REVISED -		SCALE:	SHEET 1	OF 2 SHEETS	STA.	TO STA.	ILLINOIS FED. AID PROJECT		





**PAVEMENT REINFORCEMENT DETAIL**



**PATCHING DETAIL**

- \* Every 3rd intersection must be tied.
- \*\* When the minimum clearance cannot be obtained with the transverse bar on top then the transverse rebar shall be tied to the bottom of the longitudinal rebar.
- \*\*\* Minimum lap length is 18"

**GENERAL NOTES**

The #6 tie bars to be drilled & grouted into the existing pavement shall be included in the cost of "CLASS A PATCHES (SPECIAL)."

MODEL: Default  
FILE NAME: c:\p\work\pwt\hillead\101238\0774D27-shlr-patching\specialA.dgn

	USER NAME = Brian.Bierman	DESIGNED -	REVISED -	STATE OF ILLINOIS DEPARTMENT OF TRANSPORTATION	CLASS A PATCHES (SPECIAL)			F.A.I. RTE.	SECTION	COUNTY	TOTAL SHEETS	SHEET NO.
		DRAWN -	REVISED -					70	D7 PATCHING 2025-2	FAYETTE	6	6
		CHECKED -	REVISED -					CONTRACT NO. 74D27				
	PLOT DATE = 12/9/2024	DATE -	REVISED -		SCALE:	SHEET 2	OF 2	SHEETS	STA.	TO STA.	ILLINOIS FED. AID PROJECT	