

EXISTING LEGEND

- (A) HMA OVERLAY, 4"±
- (B) P.C.C. PAVEMENT, 9"±
- (C) COMBINATION CURB AND GUTTER TYPE B-6.24
- (D) CONCRETE MEDIAN
- (E) P.C.C. SIDEWALK, 5"
- (F) CONCRETE RETAINING WALL
- (G) PAVED SHOULDER
- (H) AGGREGATE SUBGRADE, 12"

REMOVAL LEGEND

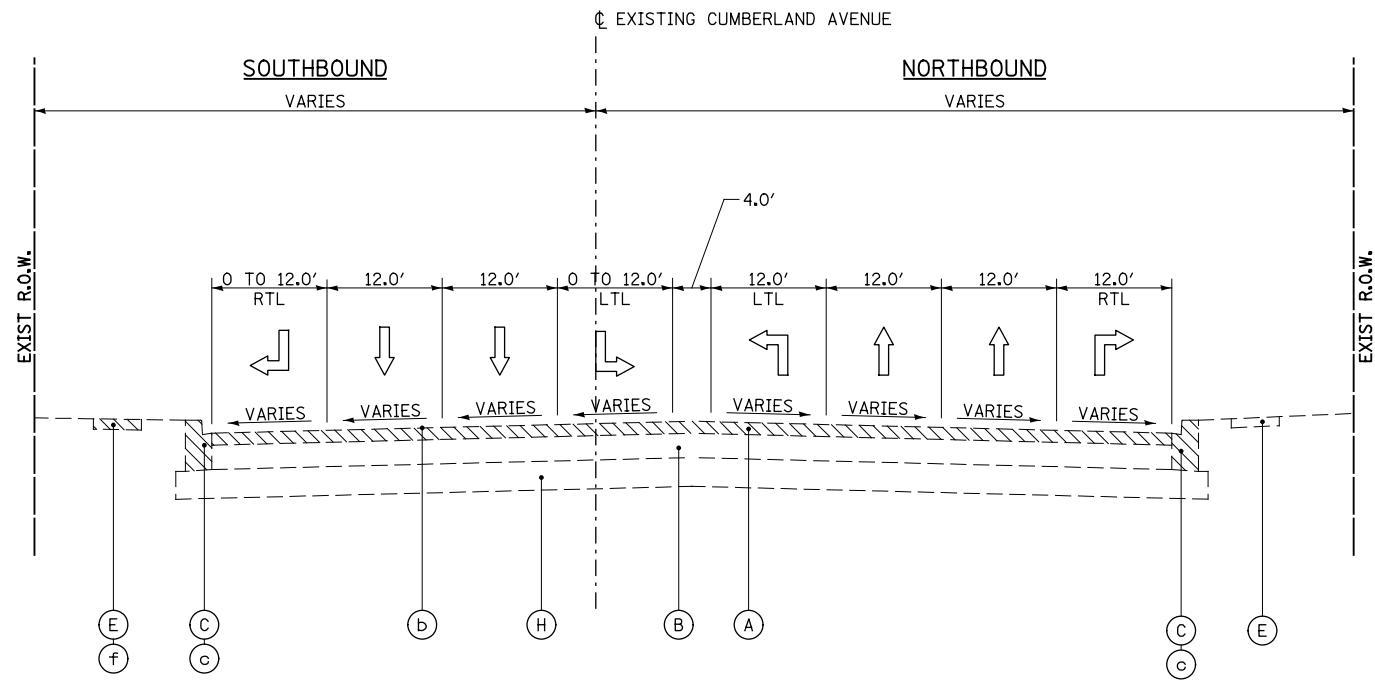
- (a) PAVEMENT REMOVAL
- (b) HOT-MIX ASPHALT REMOVAL, 2-1/2"
- (c) COMBINATION CURB AND GUTTER REMOVAL
- (d) MEDIAN REMOVAL
- (e) PAVED SHOULDER REMOVAL
- (f) SIDEWALK REMOVAL

PROPOSED LEGEND

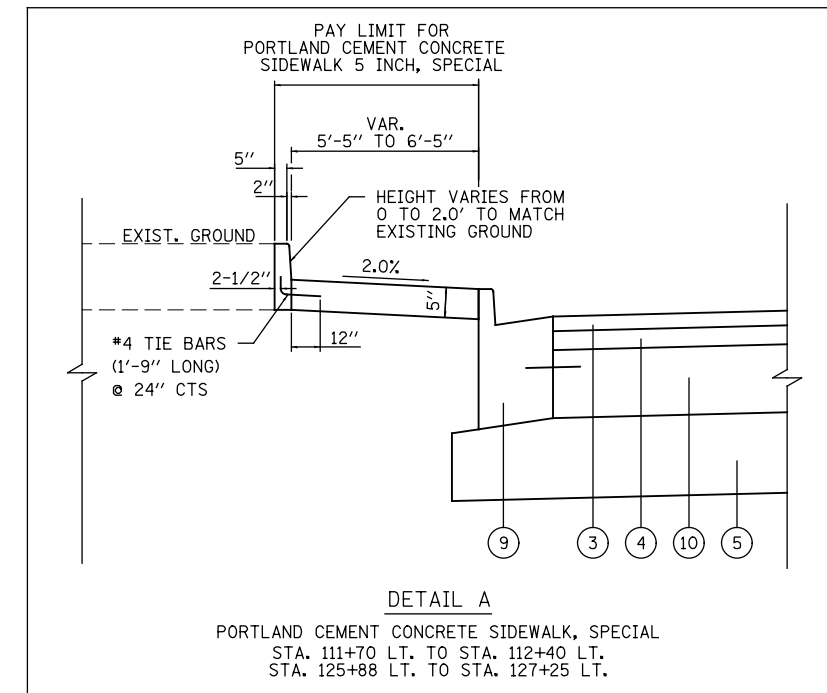
- (1) PORTLAND CEMENT CONCRETE PAVEMENT, 9 1/2" (JOINTED)
- (2) STABILIZED SUBBASE HOT-MIX ASPHALT, 4 1/2"
- (3) POLYMERIZED HOT-MIX ASPHALT SURFACE COURSE, MIX "F", N90, 1 3/4"
- (4) POLYMERIZED LEVELING BINDER (MACHINE METHOD), IL-4.75, N50, 3/4"
- (5) AGGREGATE SUBGRADE IMPROVEMENT, 12"
- (6) HOT MIX ASPHALT SHOULDERS, 6"
- (7) CONCRETE MEDIAN, TYPE SB-6.12
- (8) COMBINATION CONCRETE CURB AND GUTTER, TYPE B-6.12
- (9) COMBINATION CONCRETE CURB AND GUTTER, TYPE B-6.24
- (10) PORTLAND CEMENT CONCRETE BASE COURSE, 9 1/2"
- (11) TOPSOIL FURNISH AND PLACE, 4" EROSION CONTROL BLANKET (SEE LANDSCAPING PLAN)
- (12) CONCRETE MEDIAN SURFACE, 4"
- (13) PORTLAND CEMENT CONCRETE SIDEWALK, 5"
- (14) CONCRETE RETAINING WALL (SEE STRUCTURAL PLAN)

**STRUCTURAL PAVEMENT DESIGN INFORMATION
BLOCK FOR CUMBERLAND AVENUE**

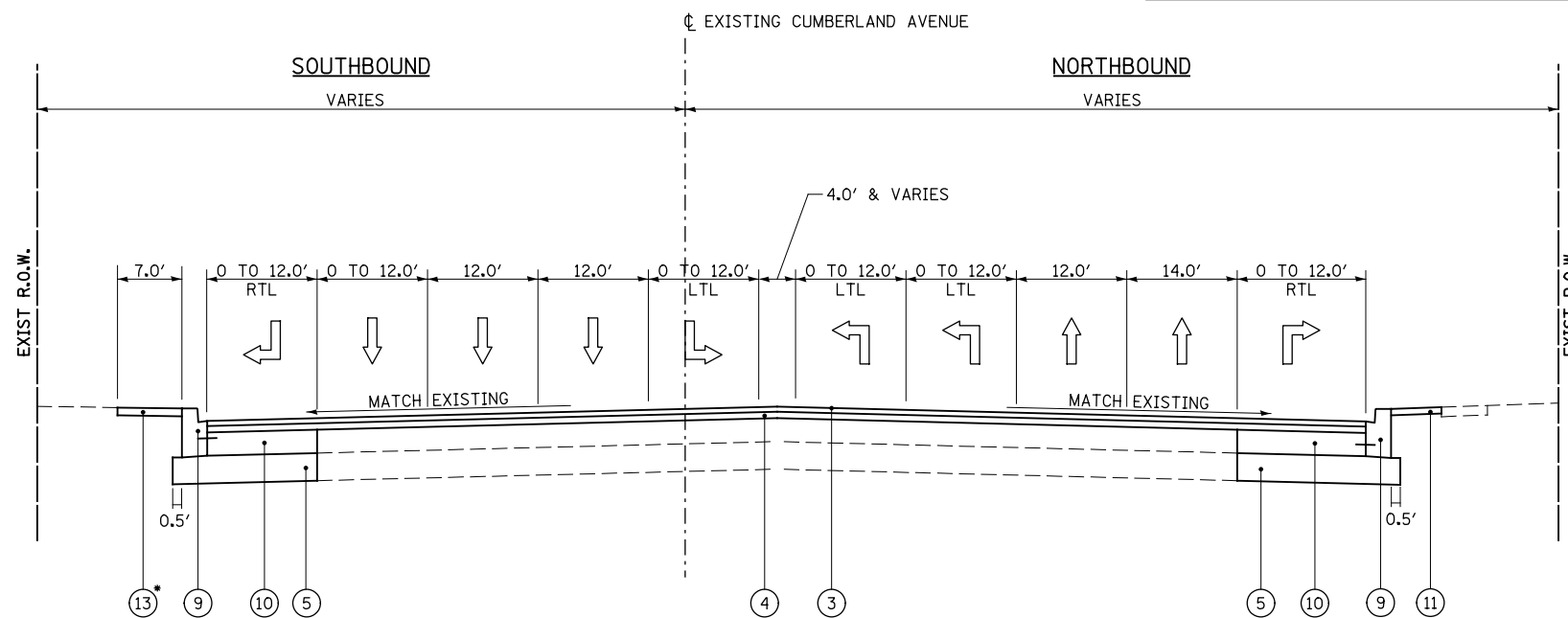
STRUCTURAL TRAFFIC:	YEAR	2030
PV=	39,480	SU= 3,760 MU= 3,760
ROAD/STREET CLASSIFICATION:	CLASS	1
P=	8%	S= 37% M= 37%
TRAFFIC FACTOR:	Actual TF=	23.39 AC Type=
	Minimum TF=	4.13
AC GRADE:	Binder=	Surface=
SUBGRADE SUPPORT RATING:		
SSR=	2.00	(Sta. _____ to _____)
SSR=		(Sta. _____ to _____)



EXISTING TYPICAL SECTION
STA. 123+54.78 TO STA. 132+00.73



DETAIL A
PORTLAND CEMENT CONCRETE SIDEWALK, SPECIAL
STA. 111+70 LT. TO STA. 112+40 LT.
STA. 125+88 LT. TO STA. 127+25 LT.



PROPOSED TYPICAL SECTION
STA. 123+54.78 TO STA. 132+00.73

*SEE DETAIL A FOR PORTLAND CEMENT CONCRETE SIDEWALK 5 INCH, SPECIAL

	PATRICK ENGINEERING INC. 4970 VARSITY DRIVE LISLE, IL 60532 patrickengineering.com	USER NAME = tkceppen(Rdwy_Lisle) PLOT CONFIG = PDF(Grey_Small).plt PLOT SCALE = 1:20 PLOT DATE = 2/18/2013 6:41:20 PM	DESIGNED - CPK DRAWN - MJP CHECKED - JAH DATE - 2/18/2013	REVISED - REVISED - REVISED - REVISED -
--	---	--	--	--

**STATE OF ILLINOIS
DEPARTMENT OF TRANSPORTATION**

TYPICAL SECTIONS	
I-90 RAMP 6 & BRYN MAWR SPUR	
SCALE: NTS	SHEET TYP-04 OF 7
STA. _____ TO STA. _____	STA. _____ TO STA. _____

F.A.U. RTE.	SECTION	COUNTY	TOTAL SHEETS	SHEET NO.
2746	1616B	COOK	404	46
				60J14
FED. ROAD DIST. NO.		ILLINOIS FED. AID PROJECT		