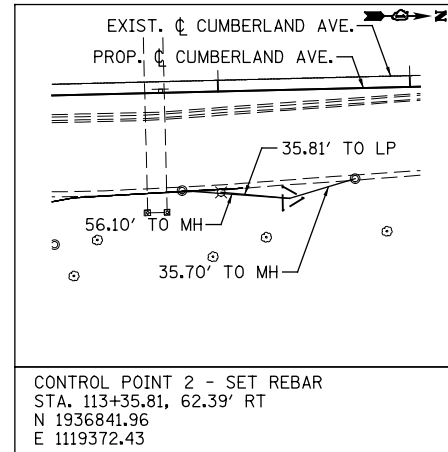
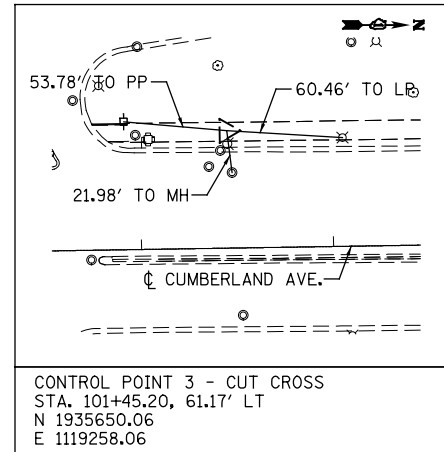


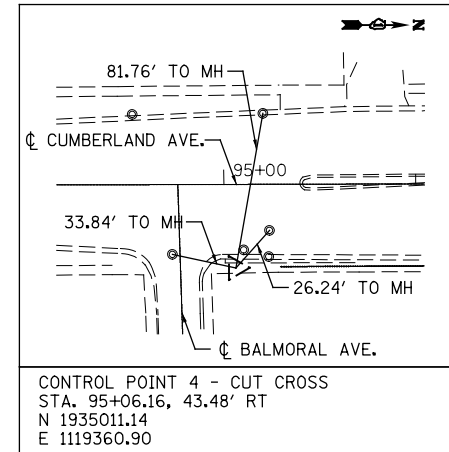
CONTROL POINT 1 - SET REBAR
 STA. 109+10.83, 3.17' RT
 N 1936416.09
 E 1119317.46



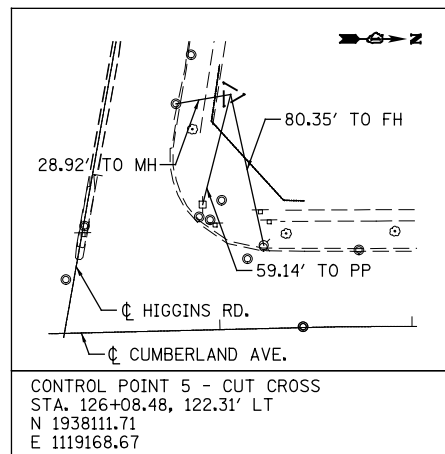
CONTROL POINT 2 - SET REBAR
 STA. 113+35.81, 62.39' RT
 N 1936841.96
 E 1119372.43



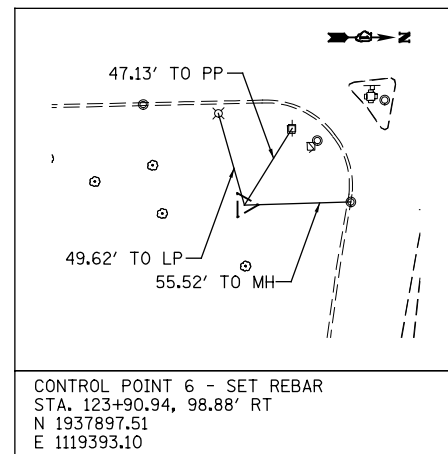
CONTROL POINT 3 - CUT CROSS
 STA. 101+45.20, 61.17' LT
 N 1935650.06
 E 1119258.06



CONTROL POINT 4 - CUT CROSS
 STA. 95+06.16, 43.48' RT
 N 1935011.14
 E 1119360.90



CONTROL POINT 5 - CUT CROSS
 STA. 126+08.48, 122.31' LT
 N 1938111.71
 E 1119168.67



CONTROL POINT 6 - SET REBAR
 STA. 123+90.94, 98.88' RT
 N 1937897.51
 E 1119393.10

BENCHMARKS

BM100: CUT CROSS IN BOLT ON FIRE HYDRANT AT SOUTHEAST CORNER OF CUMBERLAND AVENUE AND BALMORAL AVENUE. FIRE HYDRANT IS 15 FEET SOUTH OF INTERSECTION AND EAST OF CUMBERLAND.

ELEVATION - 634.42
 STA. 94+55.73, 48.35' RT
 N 1934960.68
 E 1119365.45

BM101: CUT CROSS IN BOLT ON FIRE HYDRANT AT NORTHWEST CORNER OF CUMBERLAND AVENUE AND BRYN MAWR AVENUE. FIRE HYDRANT IS 100 FEET NORTH OF INTERSECTION AND WEST OF CUMBERLAND.

ELEVATION - 635.67
 STA. 101+45.25, 54.74' LT
 N 1935650.15
 E 1119264.49

BM102: CUT CROSS ON BOLT FOR TRAFFIC SIGNAL AND NORTHWEST CORNER OF CUMBERLAND AVENUE AND THE RAMP FROM NORTHBOUND CUMBERLAND TO EASTBOUND I-90. MARK IS 40 FEET NORTH OF CENTERLINE OF INTERSECTION.

ELEVATION - 645.68
 STA. 111+92.56, 62.18' RT
 N 1936698.72
 E 1119374.37

BM103: CUT SQUARE AT SOUTHEAST CORNER OF BRIDGE AT BEGINNING OF METAL HAND RAIL.

ELEVATION - 657.65
 STA. 116+40.43, 46.16' RT
 N 1937146.30
 E 1119351.63

BM104: CUT CROSS IN BOLT ON FIRE HYDRANT AT NORTHWEST CORNER OF INTERSECTION OF CUMBERLAND AVENUE AND HIGGINS ROAD. FIRE HYDRANT IS 50 FEET NORTH OF INTERSECTION AND WEST OF CUMBERLAND.

ELEVATION - 638.62
 STA. 126+23.58, 42.94' LT
 N 1938128.00
 E 1119247.80

PATRICK ENGINEERING INC. 4970 VARSITY DRIVE LISLE, IL 60532 patrickengineering.com	USER NAME = tkcepeniRdwy_Lisle PLOT CONFIG = PDF(Grey_Small).plt PLOT SCALE = 1:100 PLOT DATE = 2/18/2013 4:47:52 PM	DESIGNED - CPK DRAWN - MJP CHECKED - JAH DATE - 2/18/2013	REVISED - REVISED - REVISED - REVISED -	STATE OF ILLINOIS DEPARTMENT OF TRANSPORTATION	ALIGNMENT, TIES & BENCHMARKS			F.A.U. RTE. 2746 SECTION 1616B COUNTY COOK TOTAL SHEETS 404 SHEET NO. 51
	SCALE: NA SHEET ALI-02 OF 2 STA. TO STA.				FED. ROAD DIST. NO. ILLINOIS FED. AID PROJECT			
					60J14			