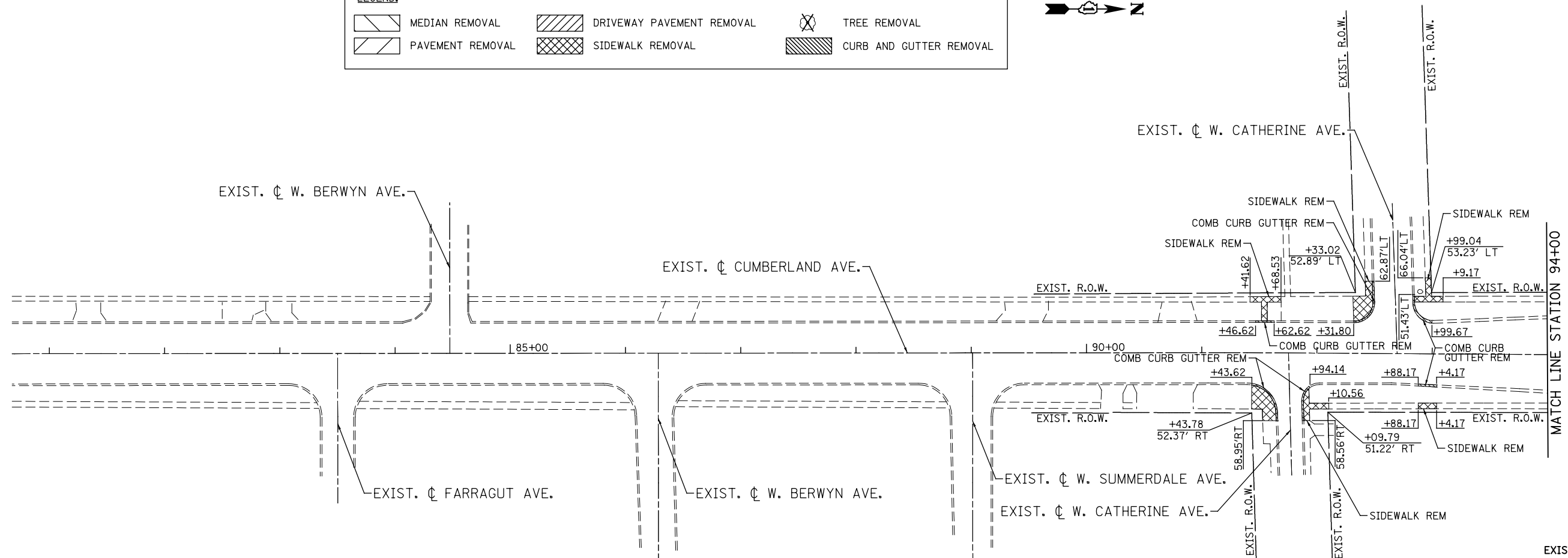
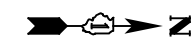
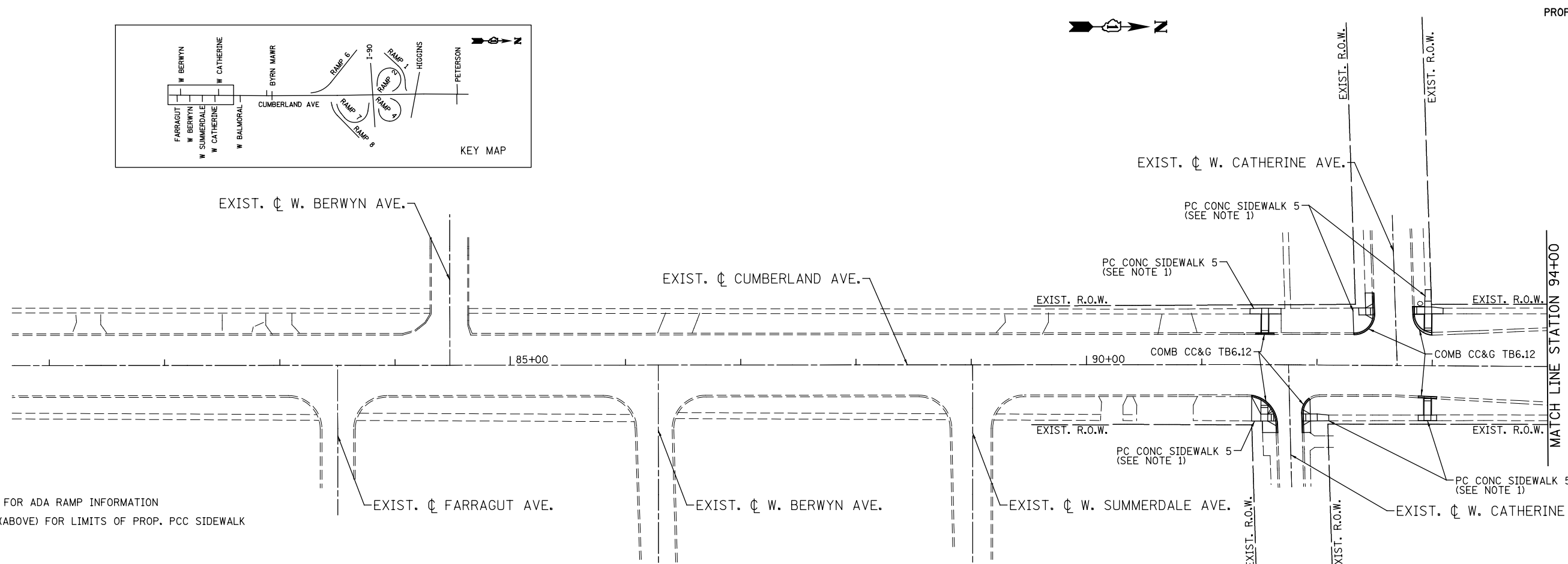
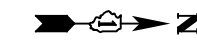
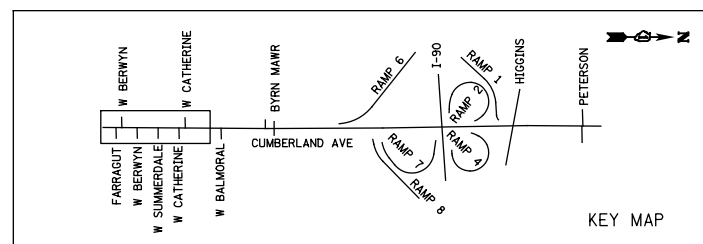


**LEGEND:**

|  |                  |  |                           |  |                         |
|--|------------------|--|---------------------------|--|-------------------------|
|  | MEDIAN REMOVAL   |  | DRIVEWAY PAVEMENT REMOVAL |  | TREE REMOVAL            |
|  | PAVEMENT REMOVAL |  | SIDEWALK REMOVAL          |  | CURB AND GUTTER REMOVAL |



EXISTING



PROPOSED

- NOTES**
- SEE ADA DETAIL SHEETS FOR ADA RAMP INFORMATION
  - SEE SIDEWALK REMOVAL (ABOVE) FOR LIMITS OF PROP. PCC SIDEWALK

|   |                                   |                  |           |
|---|-----------------------------------|------------------|-----------|
| <p>PATRICK ENGINEERING INC.<br/>4970 VARSITY DRIVE<br/>LISLE, IL 60532<br/>patrickengineering.com</p> | USER NAME = tkceppniRdwj_Lisle    | DESIGNED - JSS   | REVISED - |
|   | PLOT CONFIG = PDF(Grey_Small).plt | DRAWN - JSS      | REVISED - |
|   | PLOT SCALE = 1:100                | CHECKED - JAH    | REVISED - |
|   | PLOT DATE = 2/18/2013 4:49:42 PM  | DATE - 2/18/2013 | REVISED - |

**STATE OF ILLINOIS  
DEPARTMENT OF TRANSPORTATION**

**ROADWAY PLAN  
CUMBERLAND AVENUE**

SCALE: 1"=50' SHEET PP-01 OF 9 STA. 81+00 TO STA. 94+00

|   |         |        |              |           |
|---|---------|--------|--------------|-----------|
| F.A. RTE.                                     | SECTION | COUNTY | TOTAL SHEETS | SHEET NO. |
| 2746  | 1616B   | COOK   | 404          | 52        |
| FED. ROAD DIST. NO. ILLINOIS FED. AID PROJECT |         |        | 60J14        |           |

G:\DOT\21050\_006\_CumberlandAve\Drawings\CADD\_Sheets\160J14-sht-plan\_01B.dgn