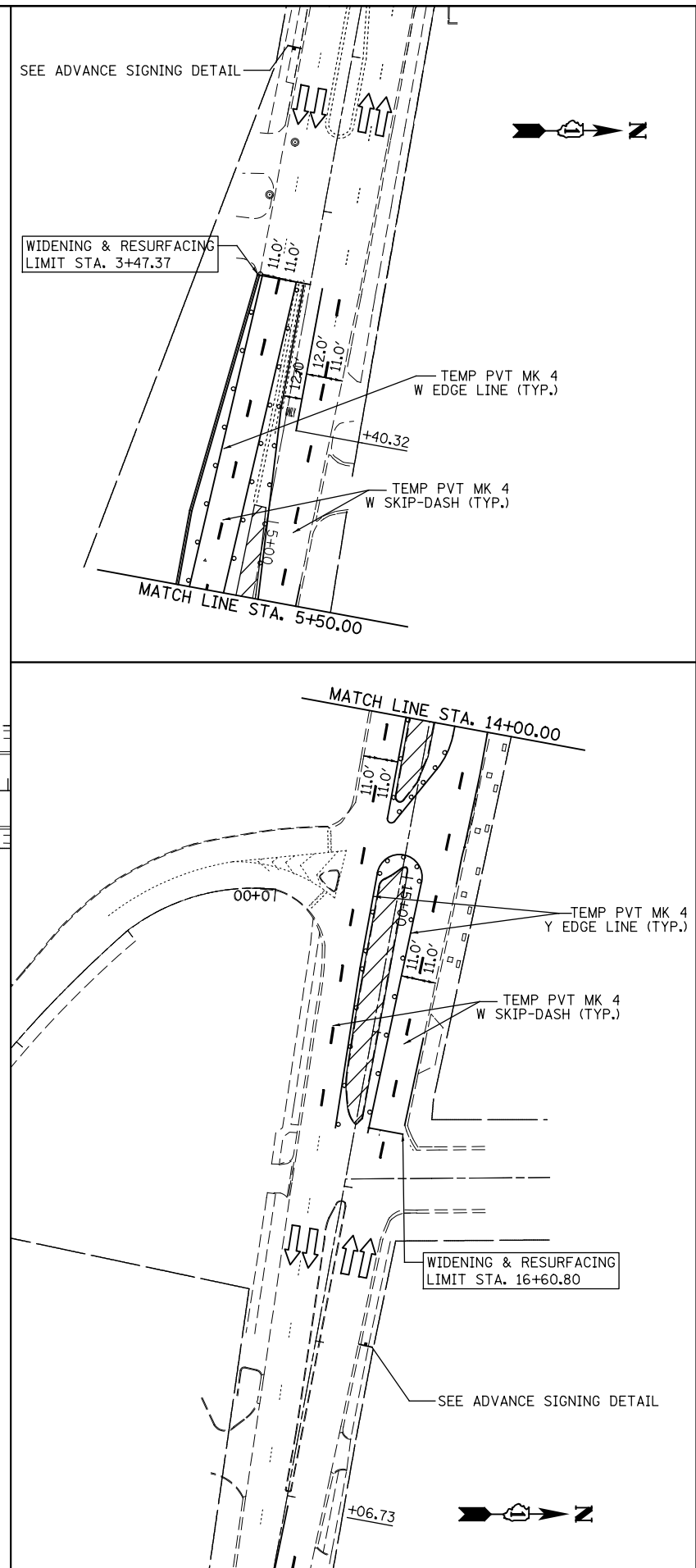
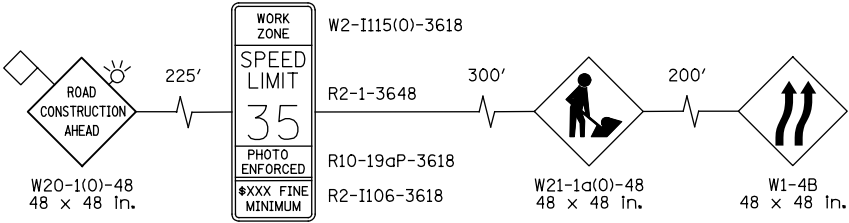


NOTES:

1. SIGN W21-1a(0)-48 SHALL BE TAKEN DOWN WHEN WORKERS ARE NOT PRESENT.
2. DO NOT USE SIGN W1-4B IN HIGGINS ROAD ADVANCE SIGNING DETAIL.



ADVANCE SIGNING DETAIL:



LEGEND	
	WORK AREA
	TEMPORARY PAVEMENT
	PROP. BASE COURSE WIDENING WITH 2 1/2" OF TEMPORARY PAVEMENT
	TYPE II BARRICADES OR DRUMS WITH STEADY BURNING LIGHTS @ 50 FT CENTERS ALONG ROADWAY (TANGENTS), 20 FT CENTERS MONO-DIRECTIONAL ALONG TAPERS, AND 12 FT CENTERS ALONG RADII.
	IMP ATTN TEMP FRN TL3
	TEMPORARY CONCRETE BARRIER
	DIRECTION OF TRAFFIC
	VERTICAL PANEL WITH STEADY BURNING LIGHT 50 FT C-C
	TYPE III BARRICADES WITH FLASHING LIGHTS

PATRICK ENGINEERING INC.
4970 VARSITY DRIVE
LISLE, IL 60532
patrickengineering.com

USER NAME = tkceppen(Rdwy_Lisle)
PLOT CONFIG = PDF(Grey_Small).plt
PLOT SCALE = 1:1000
PLOT DATE = 2/18/2013 7:08:35 PM

DESIGNED - CPK
DRAWN - CPK
CHECKED - JAH
DATE - 2/18/2013

REVISED -
REVISED -
REVISED -
REVISED -

**STATE OF ILLINOIS
DEPARTMENT OF TRANSPORTATION**

**SUGGESTED STAGES OF CONSTRUCTION & TRAFFIC CONTROL
STAGE 1 CUMBERLAND AVENUE**

SCALE: 1"=50' SHEET MOT-18 OF 42 STA. TO STA.

F.A.U. RTE.	SECTION	COUNTY	TOTAL SHEETS	SHEET NO.
2746	1616B	COOK	404	78
				60J14

C:\DOT\21050_006.CumberlandAve\Drawings\CADD Sheets\160J14-1st-staging_01_04.dgn