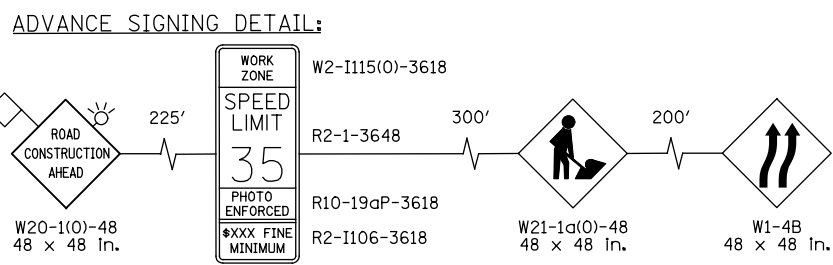
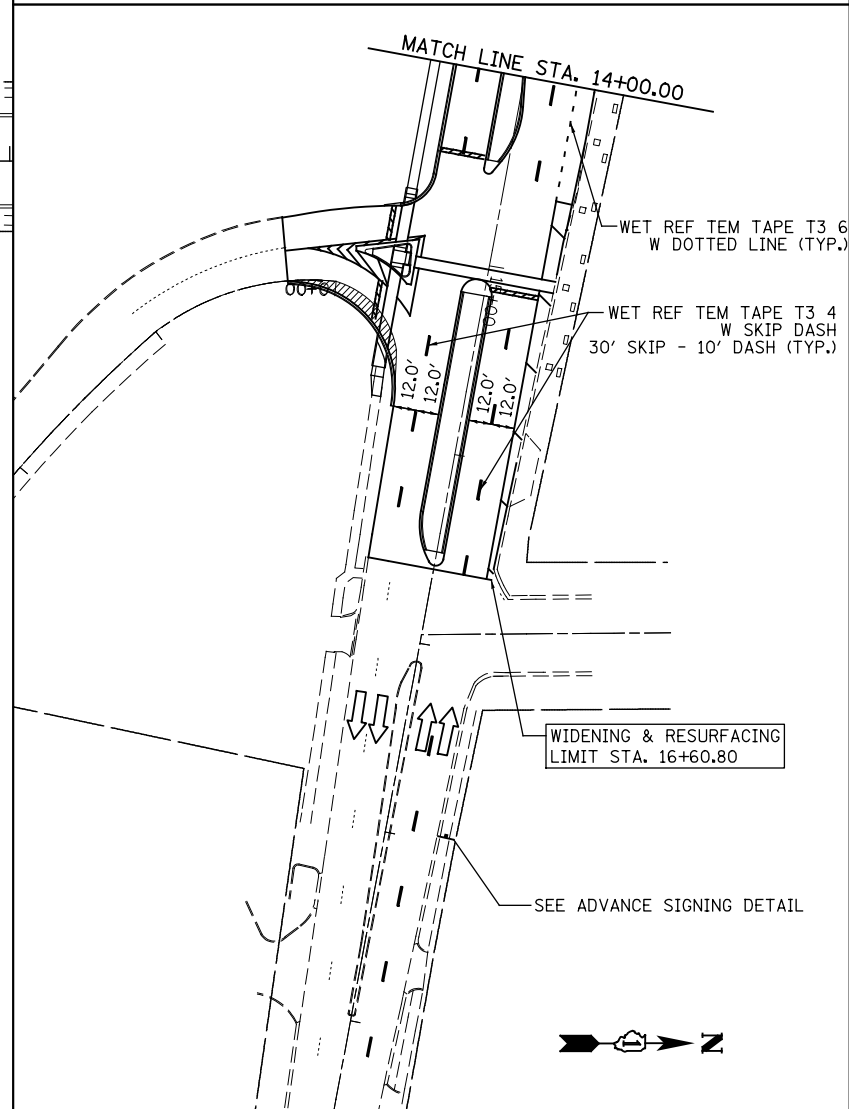
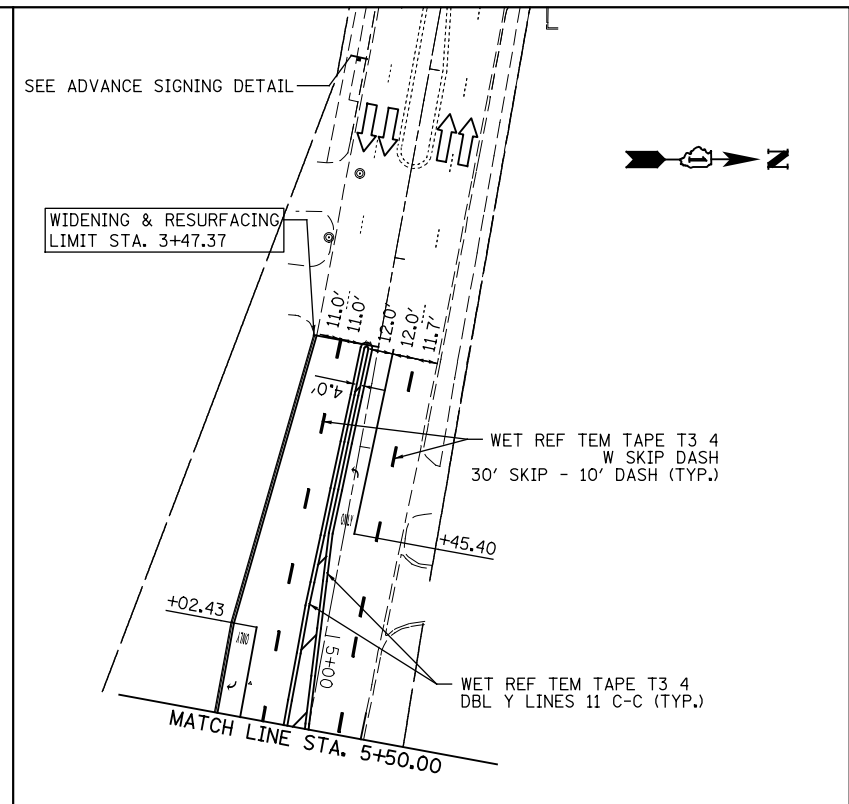


- NOTES:**
1. SIGN W21-1a(0)-48 SHALL BE TAKEN DOWN WHEN WORKERS ARE NOT PRESENT.
 2. DO NOT USE SIGN W1-4B IN HIGGINS ROAD ADVANCE SIGNING DETAIL.



LEGEND

WORK AREA	TYPE II BARRICADES OR DRUMS WITH STEADY BURNING LIGHTS @ 50 FT CENTERS ALONG ROADWAY (TANGENTS), 20 FT CENTERS MONO-DIRECTIONAL ALONG TAPERS, AND 12 FT CENTERS ALONG RADII.
TEMPORARY PAVEMENT	VERTICAL PANEL WITH STEADY BURNING LIGHT 50 FT C-C
PROP. BASE COURSE WIDENING WITH 2 1/2" OF TEMPORARY PAVEMENT	TEMPORARY CONCRETE BARRIER
DIRECTION OF TRAFFIC	TYPE III BARRICADES WITH FLASHING LIGHTS
IMP ATTN TEMP FRN TL3	

PATRICK ENGINEERING INC.
 4970 VARSITY DRIVE
 LISLE, IL 60532
 patrickengineering.com

USER NAME = tkceppen(Rdwy_Lisle)
 PLOT CONFIG = PDF(Grey_Small).plt
 PLOT SCALE = 1:1000
 PLOT DATE = 2/18/2013 7:10:11 PM

DESIGNED - CPK
 DRAWN - CPK
 CHECKED - JAH
 DATE - 2/18/2013

REVISED -
 REVISED -
 REVISED -
 REVISED -

**STATE OF ILLINOIS
 DEPARTMENT OF TRANSPORTATION**

**SUGGESTED STAGES OF CONSTRUCTION & TRAFFIC CONTROL
 STAGE 2 CUMBERLAND AVENUE**

SCALE: 1"=50' SHEET MOT-25 OF 42 STA. TO STA.

F.A.U. RTE.	SECTION	COUNTY	TOTAL SHEETS	SHEET NO.
2746	1616B	COOK	404	85
				60J14
FED. ROAD DIST. NO. ILLINOIS FED. AID PROJECT				

G:\DOT\21050_006_CumberlandAve\Drawings\CADD Sheets\160J14-ht-staging_02_04.dgn