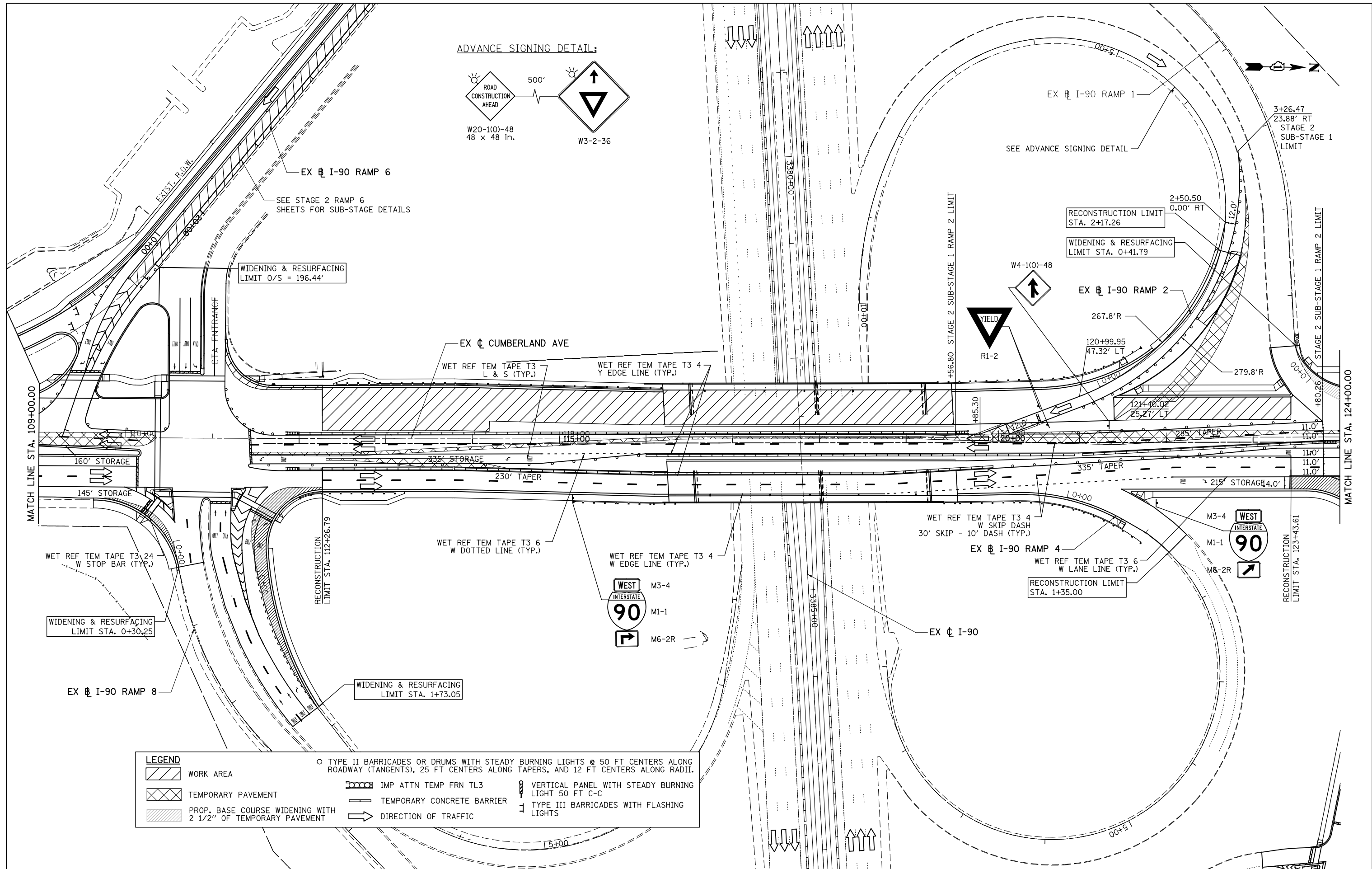
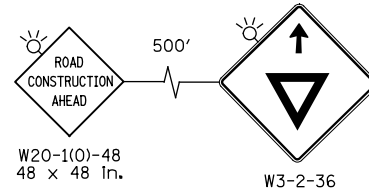


ADVANCE SIGNING DETAIL:



LEGEND	
	WORK AREA
	TEMPORARY PAVEMENT
	PROP. BASE COURSE WIDENING WITH 2 1/2" OF TEMPORARY PAVEMENT
	TYPE II BARRICADES OR DRUMS WITH STEADY BURNING LIGHTS @ 50 FT CENTERS ALONG ROADWAY (TANGENTS), 25 FT CENTERS ALONG TAPERS, AND 12 FT CENTERS ALONG RADII.
	IMP ATTN TEMP FRN TL3
	TEMPORARY CONCRETE BARRIER
	DIRECTION OF TRAFFIC
	VERTICAL PANEL WITH STEADY BURNING LIGHT 50 FT C-C
	TYPE III BARRICADES WITH FLASHING LIGHTS

PATRICK ENGINEERING INC. 4970 VARSITY DRIVE LISLE, IL 60532 patrickengineering.com	USER NAME = tkoeppen(Rdwy_Lisle)	DESIGNED - CPK	REVISED -
	PLOT CONFIG = PDF(Grey_Small).plt	DRAWN - CPK	REVISED -
	PLOT SCALE = 1:1100	CHECKED - JAH	REVISED -
	PLOT DATE = 2/18/2013 7:10:39 PM	DATE - 2/18/2013	REVISED -

**STATE OF ILLINOIS  
DEPARTMENT OF TRANSPORTATION**

**SUGGESTED STAGES OF CONSTRUCTION & TRAFFIC CONTROL**  
**STAGE 2 SUB-STAGE 1 FOR I-90 RAMP 2**

SCALE: 1"=50'    SHEET MOT-27 OF 42    STA. TO STA.

F.A.U. RTE.	SECTION	COUNTY	TOTAL SHEETS	SHEET NO.
2746	1616B	COOK	404	87
FED. ROAD DIST. NO.				ILLINOIS FED. AID PROJECT
				60J14

G:\DOT\21050\_006\_CumberlandAve\Drawings\CADD Sheets\160J14-ht-staging\_02.06.sub1.dgn