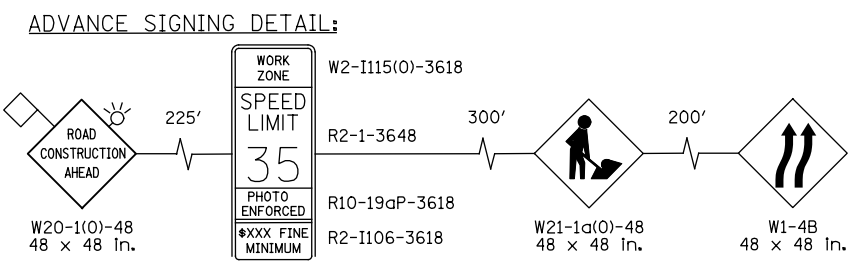
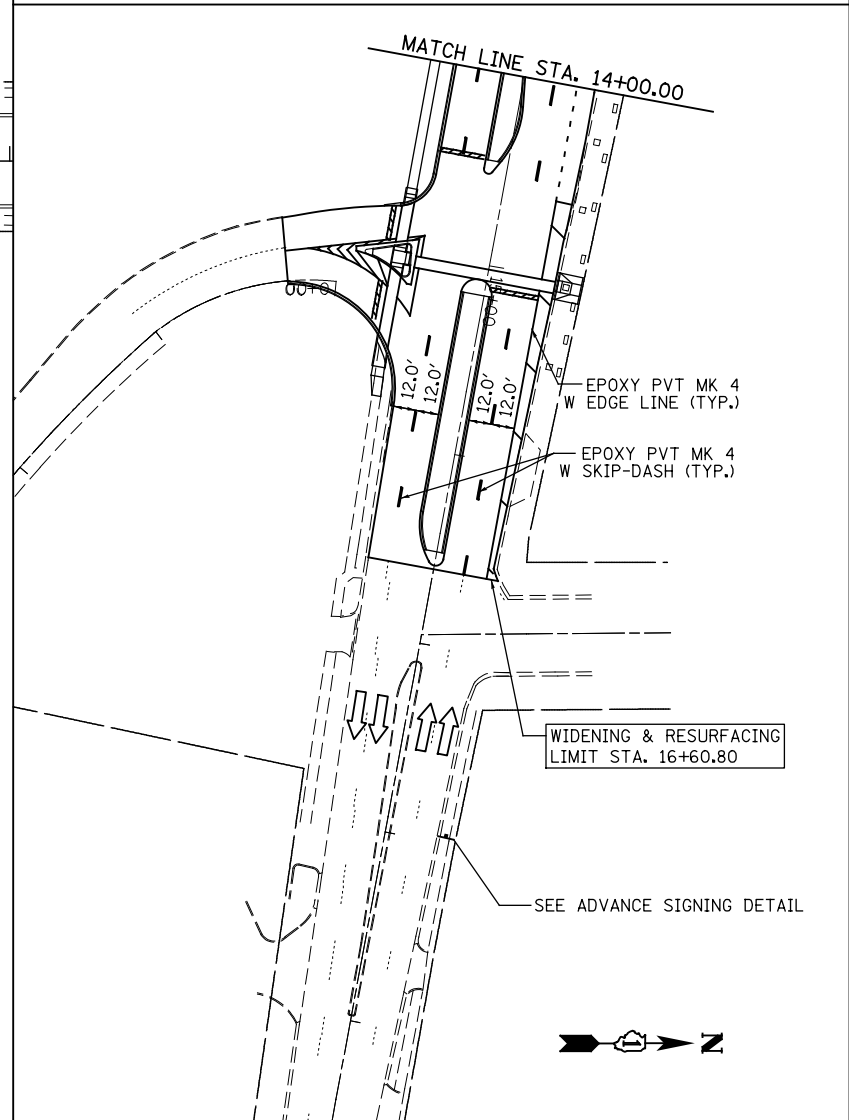
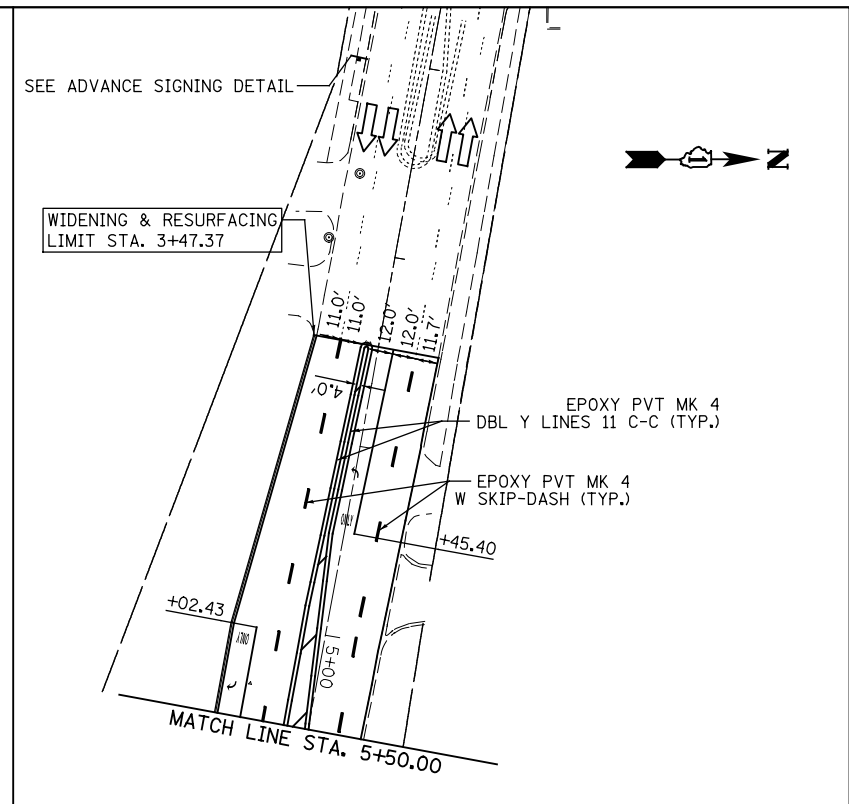


- NOTES:**
- SIGN W21-1a(0)-48 SHALL BE TAKEN DOWN WHEN WORKERS ARE NOT PRESENT.
 - DO NOT USE SIGN W1-4B IN HIGGINS ROAD ADVANCE SIGNING DETAIL.



| LEGEND | | TYPE II BARRICADES OR DRUMS WITH STEADY BURNING LIGHTS @ 50 FT CENTERS ALONG ROADWAY (TANGENTS), 25 FT CENTERS ALONG TAPERS, AND 12 FT CENTERS ALONG RADII. | |
|--------|--|---|--|
| | WORK AREA | | IMP ATTN TEMP FRN TL3 |
| | TEMPORARY PAVEMENT | | TEMPORARY CONCRETE BARRIER |
| | PROP. BASE COURSE WIDENING WITH 2 1/2" OF TEMPORARY PAVEMENT | | DIRECTION OF TRAFFIC |
| | | | VERTICAL PANEL WITH STEADY BURNING LIGHT 50 FT C-C |
| | | | TYPE III BARRICADES WITH FLASHING LIGHTS |

G:\DOT\21050_006_CumberlandAve\Drawings\CADD Sheets\160J14-ht-staging_03_04.dgn