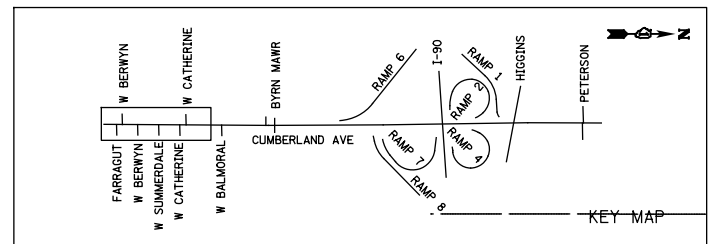
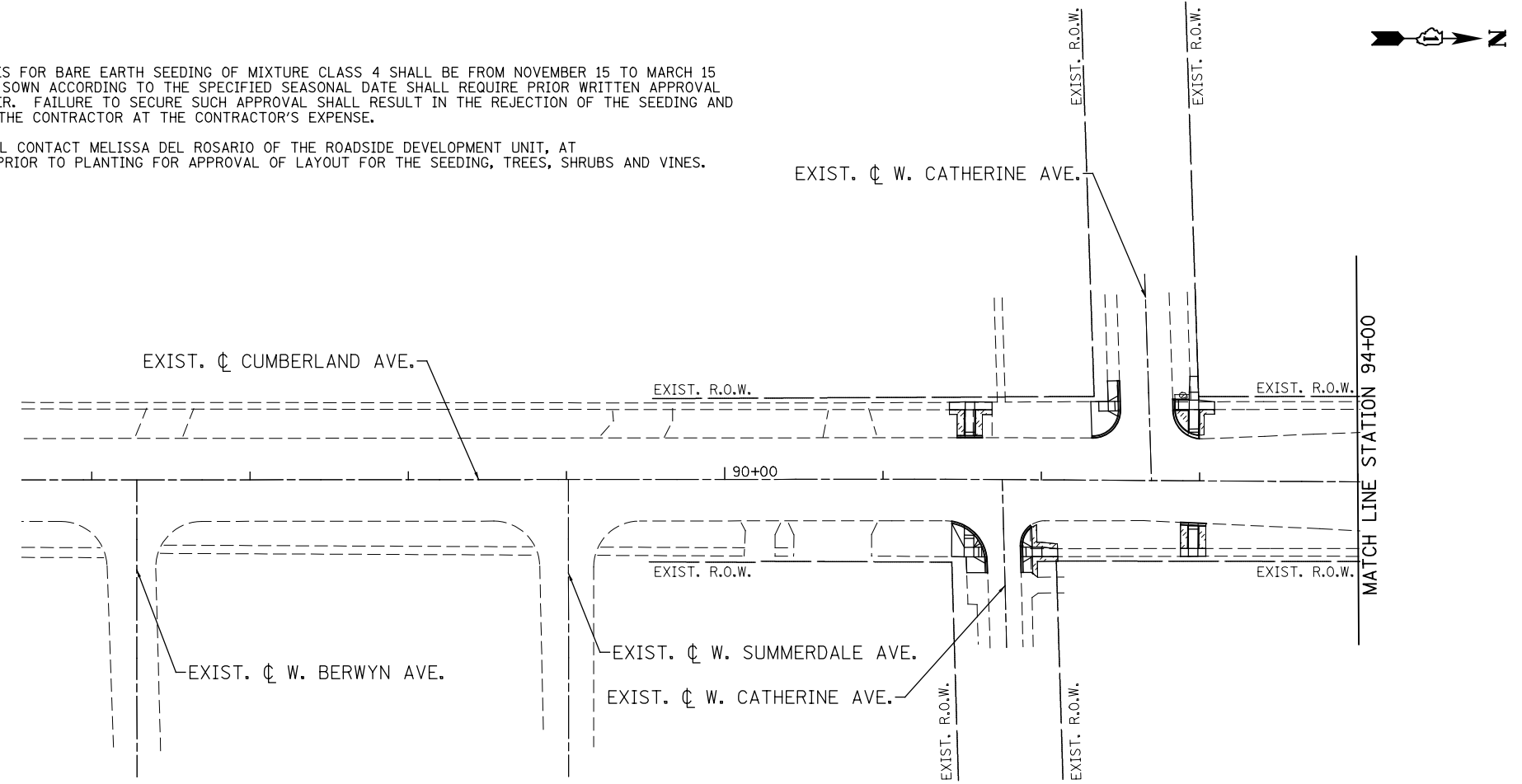


NOTES

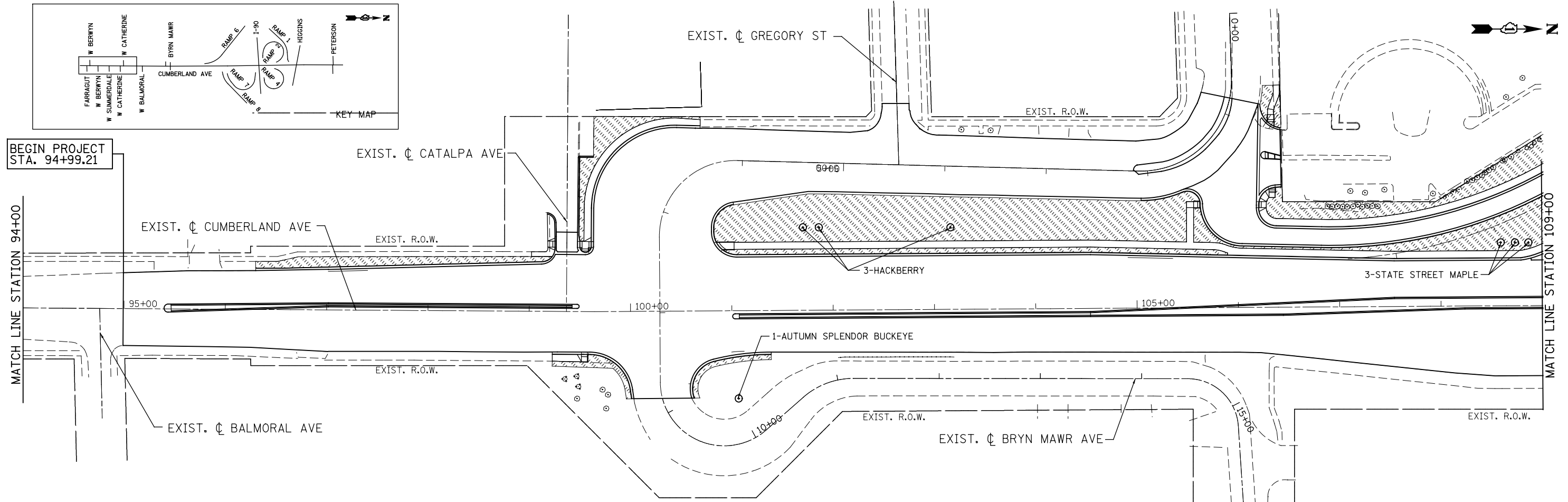
1. THE SEEDING DATES FOR BARE EARTH SEEDING OF MIXTURE CLASS 4 SHALL BE FROM NOVEMBER 15 TO MARCH 15 ALL SEEDING NOT SOWN ACCORDING TO THE SPECIFIED SEASONAL DATE SHALL REQUIRE PRIOR WRITTEN APPROVAL FROM THE ENGINEER. FAILURE TO SECURE SUCH APPROVAL SHALL RESULT IN THE REJECTION OF THE SEEDING AND REPLACEMENT BY THE CONTRACTOR AT THE CONTRACTOR'S EXPENSE.
2. THE ENGINEER WILL CONTACT MELISSA DEL ROSARIO OF THE ROADSIDE DEVELOPMENT UNIT, AT LEAST 72 HOURS PRIOR TO PLANTING FOR APPROVAL OF LAYOUT FOR THE SEEDING, TREES, SHRUBS AND VINES.

LEGEND:

- TOPSOIL FURNISH AND PLACE, 4"
- SODDING, SALT TOLERANT
- NITROGEN AND POTASSIUM FERTILIZER NUTRIENT



BEGIN PROJECT STA. 94+99.21



PATRICK ENGINEERING INC. 4970 VARSITY DRIVE LISLE, IL 60532 patrickengineering.com	USER NAME = tkoeppen(Rdwy_Lisle)	DESIGNED - CPK	REVISED -	STATE OF ILLINOIS DEPARTMENT OF TRANSPORTATION	LANDSCAPING PLAN CUMBERLAND AVENUE		F.A.U. RTE. 2746	SECTION 1616B	COUNTY COOK	TOTAL SHEETS 404	SHEET NO. 155
	PLOT CONFIG = PDF(Grey_Small).plt	DRAWN - MJP	REVISIONS -		SCALE: 1"=50'	SHEET LCPE-1 OF 5	STA. 86+00 TO STA. 109+00	FED. ROAD DIST. NO.	ILLINOIS FED. AID PROJECT	60J14	
PLOT SCALE = 1:1000	CHECKED - JAH	DATE - 2/18/2013	REVISED -								
PLOT DATE = 2/18/2013 5:25:56 PM	DATE - 2/18/2013	REVISED -									

G:\DOT\21050_006.CumberlandAve\Drawings\CADD Sheets\160J14-sht-1-Indsp-01.dgn