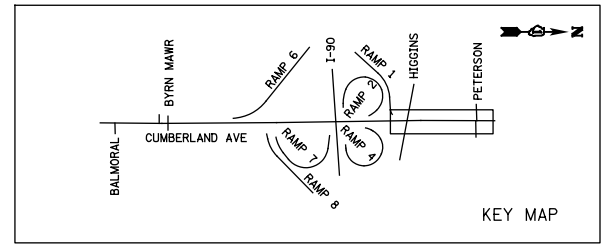
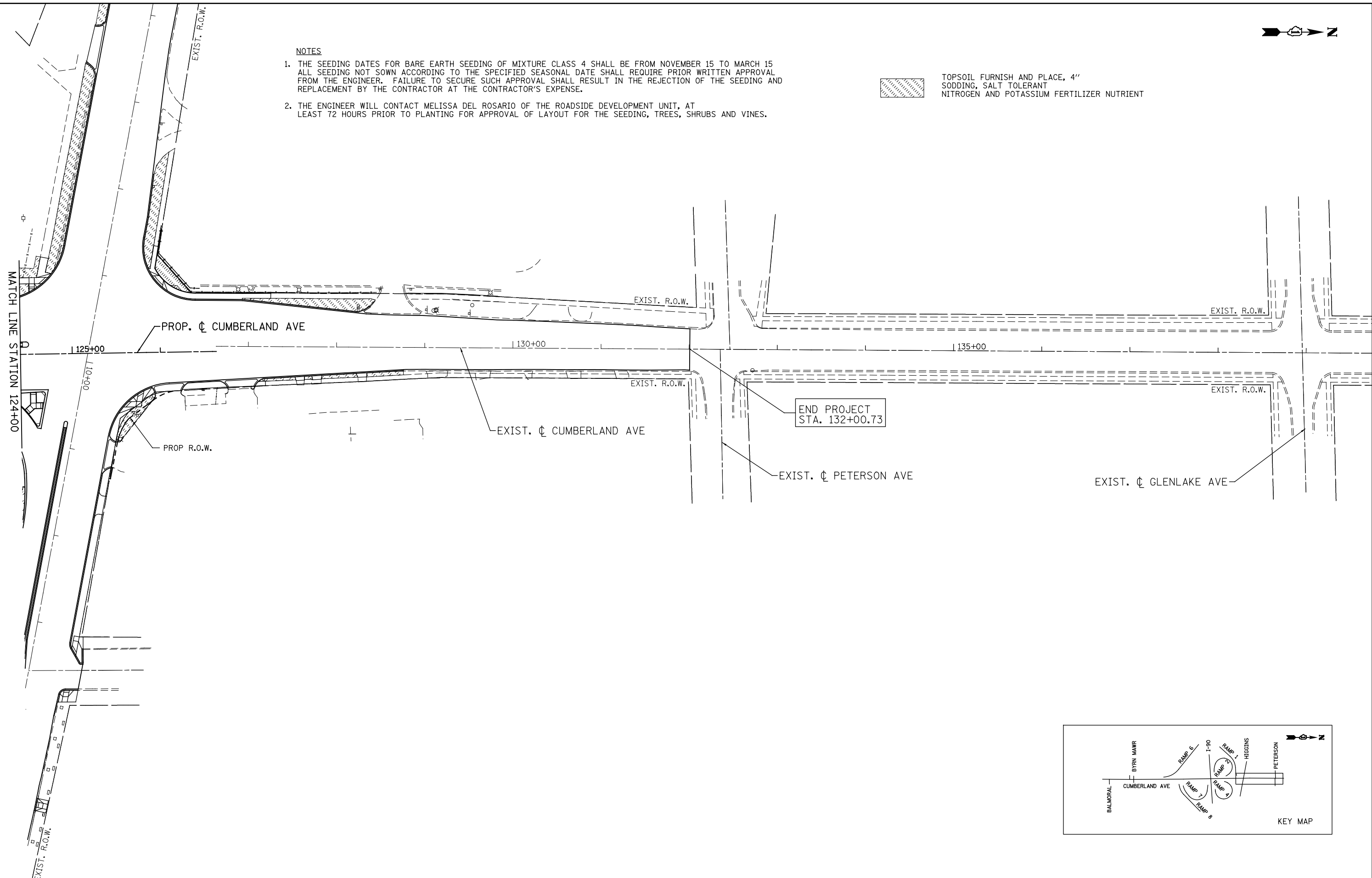


**NOTES**

1. THE SEEDING DATES FOR BARE EARTH SEEDING OF MIXTURE CLASS 4 SHALL BE FROM NOVEMBER 15 TO MARCH 15 ALL SEEDING NOT SOWN ACCORDING TO THE SPECIFIED SEASONAL DATE SHALL REQUIRE PRIOR WRITTEN APPROVAL FROM THE ENGINEER. FAILURE TO SECURE SUCH APPROVAL SHALL RESULT IN THE REJECTION OF THE SEEDING AND REPLACEMENT BY THE CONTRACTOR AT THE CONTRACTOR'S EXPENSE.
2. THE ENGINEER WILL CONTACT MELISSA DEL ROSARIO OF THE ROADSIDE DEVELOPMENT UNIT, AT LEAST 72 HOURS PRIOR TO PLANTING FOR APPROVAL OF LAYOUT FOR THE SEEDING, TREES, SHRUBS AND VINES.



TOPSOIL FURNISH AND PLACE, 4"  
SODDING, SALT TOLERANT  
NITROGEN AND POTASSIUM FERTILIZER NUTRIENT



<p>PATRICK ENGINEERING INC. 4970 VARSITY DRIVE LISLE, IL 60532 patrickengineering.com</p>	USER NAME = tkceppen(Rdwy_Lisle)	DESIGNED - CPK	REVISED -
	PLOT CONFIG= PDF(Grey_Small).plt	DRAWN - MJP	REVISED -
	PLOT SCALE = 1:100	CHECKED - JAH	REVISED -
	PLOT DATE = 2/18/2013 5:26:45 PM	DATE - 2/18/2013	REVISED -

**STATE OF ILLINOIS  
DEPARTMENT OF TRANSPORTATION**

**LANDSCAPING PLAN  
CUMBERLAND AVENUE**

SCALE: 1"=50' SHEET LCPE-4 OF 5 STA. 124+00 TO STA. END

F.A.U. RTE.	SECTION	COUNTY	TOTAL SHEETS	SHEET NO.
2746	1616B	COOK	404	158
FED. ROAD DIST. NO.			ILLINOIS FED. AID PROJECT	
			60J14	