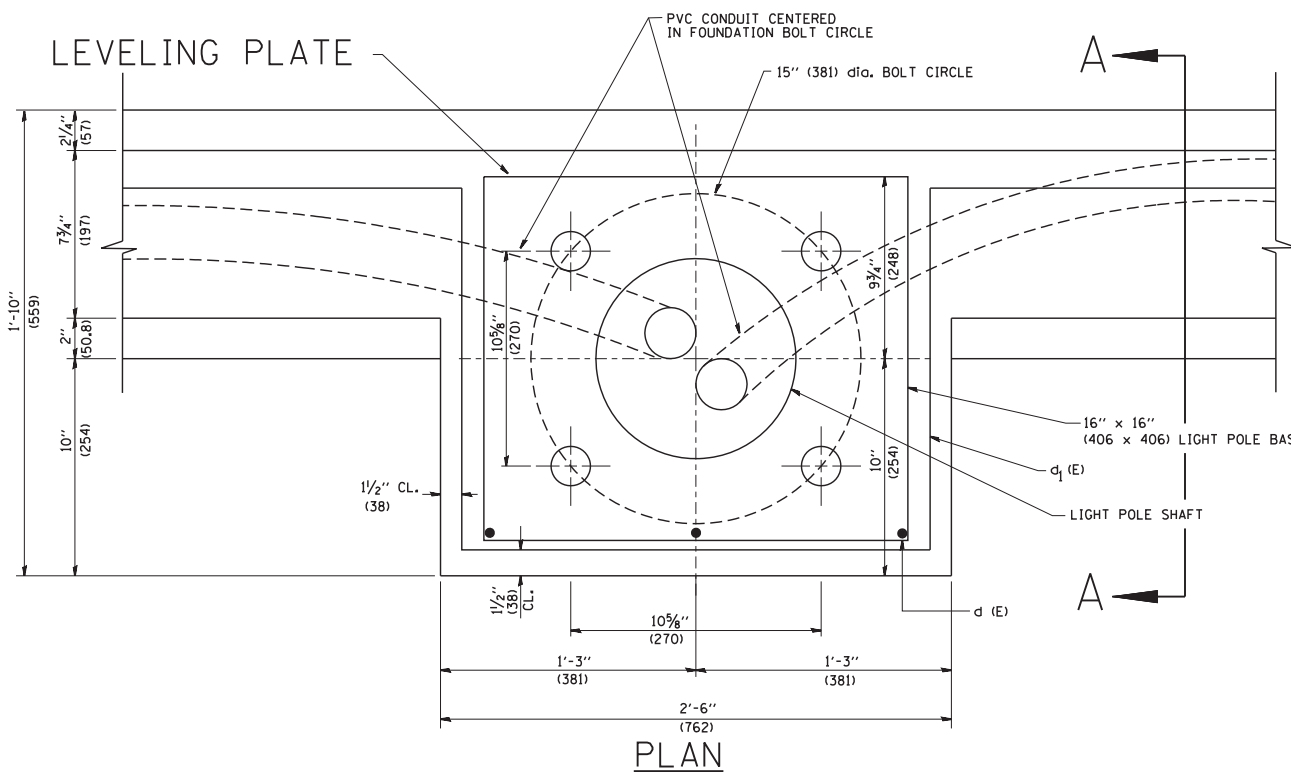


1" (25.4) dia. ANCHOR BOLT



NOTES

1. ALL DIMENSIONS ARE IN INCHES (MILLIMETERS) UNLESS OTHERWISE SHOWN.
2. LEVEL LIGHT POLE PLATES, USING THE FLANGE NUTS, PRIOR TO POURING THE PARAPET WALL. THE TOP OF THE PLATE SHALL BE AT THE SAME ELEVATION AS THE FINISHED CONCRETE PARAPET.
3. THE COST OF ANCHOR BOLTS, CONDUIT, LEVELLING PLATE AND FOUNDATION IS INCLUDED IN THE COST OF THE BRIDGE STRUCTURE.

FILE NAME = W:\diststd\22x34\be330.dgn	USER NAME = geglionobt	DESIGNED - DRAWN -	REVISED - 04-22-02
PLOT SCALE = 50.0000' / IN.	CHECKED -	REVISED -	
PLOT DATE = 1/4/2008	DATE -	REVISED -	

STATE OF ILLINOIS
DEPARTMENT OF TRANSPORTATION

LIGHT POLE MOUNTED ON CONCRETE PARAPET WALL
15" (381 mm) BOLT CIRCLE

SCALE: NONE SHEET NO. 1 OF 1 SHEETS STA. TO STA.

F.A. RTE. 2746	SECTION 1616B	COUNTY COOK	TOTAL SHEETS 404	SHEET NO. 251
BE-330			CONTRACT NO. 60J14	
FED. ROAD DIST. NO. 1 ILLINOIS FED. AID PROJECT				