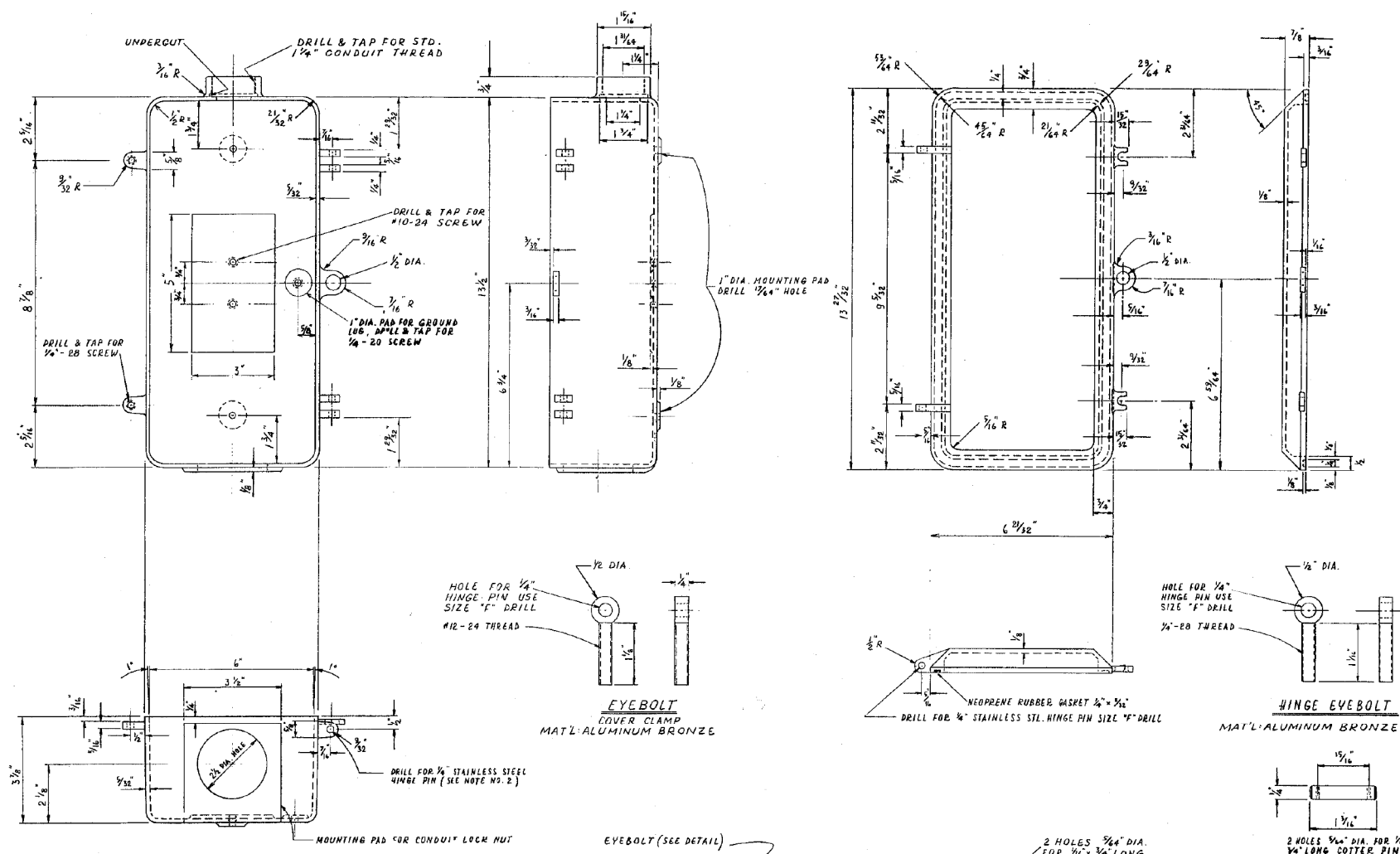


BODY

COVER



- NOTES:**
1. MATERIAL - CAST ALUMINUM ALLOY
 2. COVER CLAMP ASSEMBLY TO CONSIST OF EYEBOLT, HINGE PIN (SEE DETAILS) AND NO. 12-24 BRASS WINGNUT

DATE	REVISION	1.02
WORK ORDER NO.	DATE	
COST ALLOCATION ACCOUNT	MATERIAL	
APPROPRIATION ACCOUNT	LABOR	
JUNCTION BOX		
FOR ARTERIAL STREET LIGHTING SERVICE ON C. C. POLE		
CITY OF CHICAGO		
DEPT. OF STREETS AND SANITATION		
BUREAU OF ELECTRICITY		
DIVISION OF ELECTRICAL ENGINEERING		
DRAFTSMAN: S. GEBULIS	CHIEF DRAFTSMAN: R. [Signature]	ENGINEER: J. BORE
SUPERVISING ENGINEER: [Signature]		DWG. NO. 11922
ENGINEER BY ELECTRONIC: [Signature]		
ALL ELECTRICAL: [Signature]		
DEPUTY ENGINEER: [Signature]		
DATE: 08.10.1978	SCALE: 1" = 1"	

\$DATE\$ \$FILES\$ \$TIMES\$

USER NAME =	DESIGNED - RAS	REVISED -
PLOT SCALE =	DRAWN - RAS	REVISED -
PLOT DATE =	CHECKED - MKR	REVISED -
	DATE - 12/10/2012	REVISED -



STATE OF ILLINOIS
DEPARTMENT OF TRANSPORTATION

CDOT LIGHTING DETAILS

SCALE: NONE SHEET NO. 1 OF 1 SHEETS STA. TO STA.

F.A.U. RTE.	SECTION	COUNTY	TOTAL SHEETS	SHEET NO.
2746	1616B	COOK	404	269
CONTRACT NO. 60J14				
ILLINOIS FED. AID PROJECT				