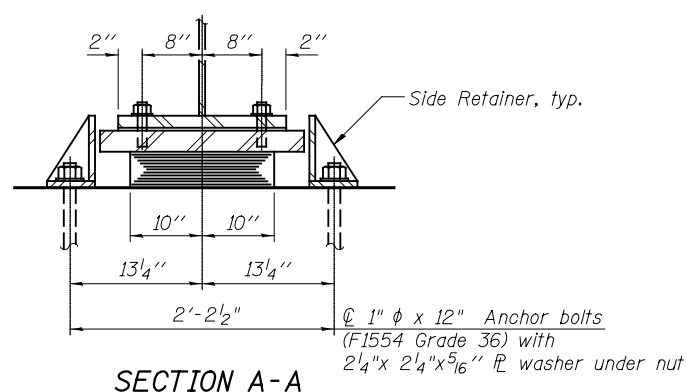
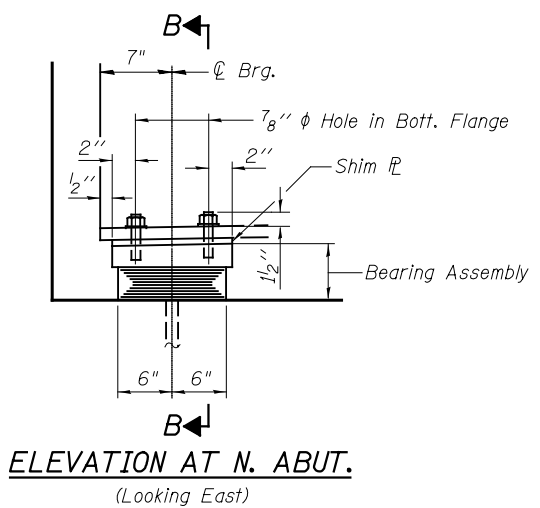


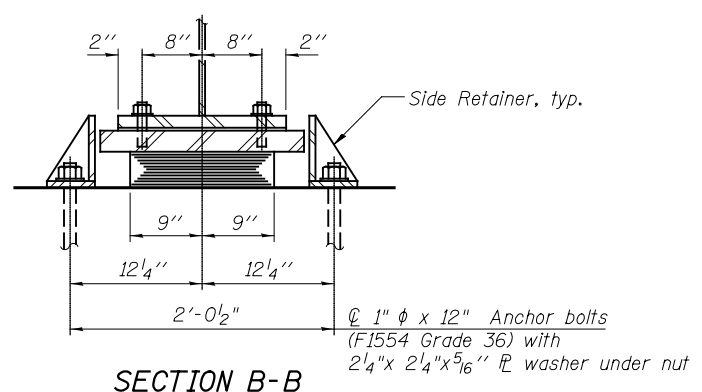
ELEVATION AT S. ABUT.
(Looking West)



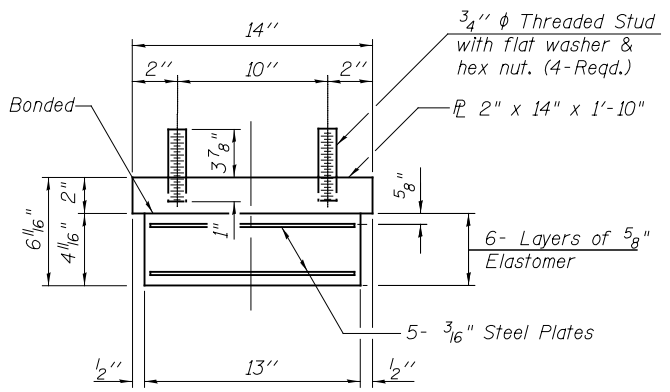
SECTION A-A



ELEVATION AT N. ABUT.
(Looking East)



SECTION B-B

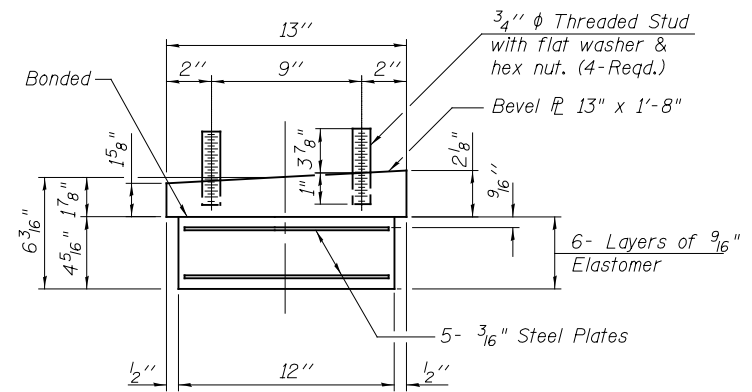


BEARING ASSEMBLY

TYPE I ELASTOMERIC EXP. BRG. AT SOUTH ABUTMENT

2 Required

Note:
Shim plates shall not be placed under Bearing Assembly.



BEARING ASSEMBLY

TYPE I ELASTOMERIC EXP. BRG. AT NORTH ABUTMENT

2 Required

Note:
Shim plates shall not be placed under Bearing Assembly.

Notes:
Anchor bolts shall be ASTM F1554 all-thread (or an Engineer-approved alternate material) of the grade(s) and diameter(s) specified. ASTM A307 Grade C anchor bolts may be used in lieu of ASTM F1554 Grade 36 (Fy=36ksi). The corresponding specified grade of AASHTO M314 anchor bolts may be used in lieu of ASTM F1554.

Anchor bolts at fixed bearings may be either cast in place or installed in holes drilled after the supported member is in place.

Anchor bolts for side retainers may be cast in place or installed in holes drilled before or after members are in place.

Drilled and set anchor bolts shall be installed according to Article 521.06 of the Standard Specifications.

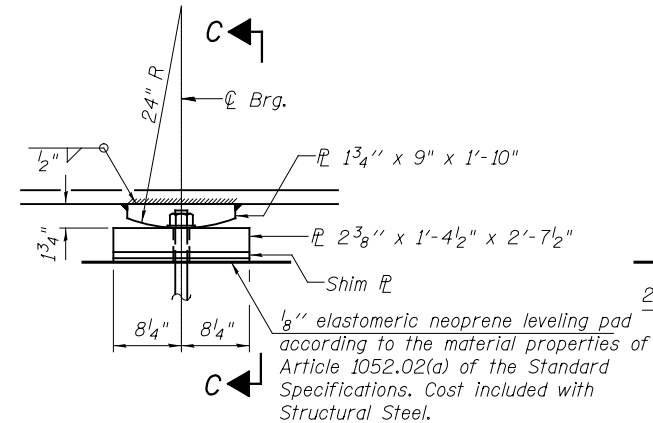
Side retainers and other steel members required for the elastomeric bearing assembly shall be included in the cost of Elastomeric Bearing Assembly, Type I.

The structural steel plates of the Elastomeric and Fixed Bearing Assemblies, including pintles, shall conform to the requirements of AASHTO M 270 Grade 50.

Two 1/8 in. adjusting shims shall be provided for each bearing in addition to all other plates or shims and placed as shown on bearing details.

BILL OF MATERIAL

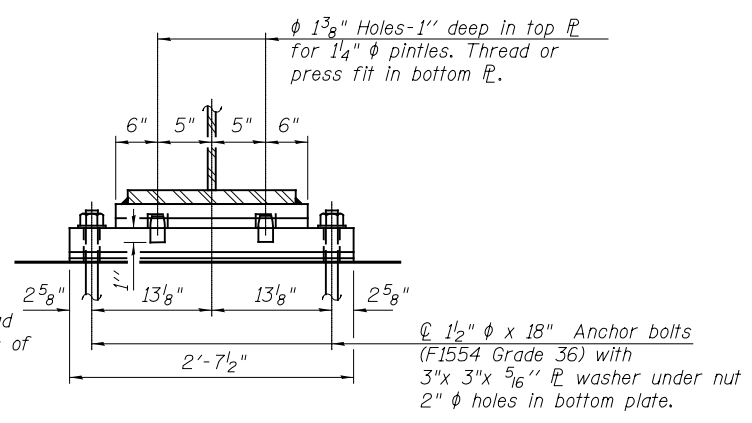
Item	Unit	Total
Elastomeric Bearing Assembly Type I	Each	4
Anchor Bolts, 1"	Each	8
Anchor Bolts, 1 1/2"	Each	4



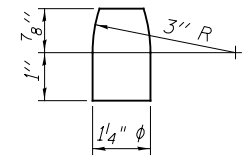
ELEVATION AT PIER

FIXED BEARING AT PIER

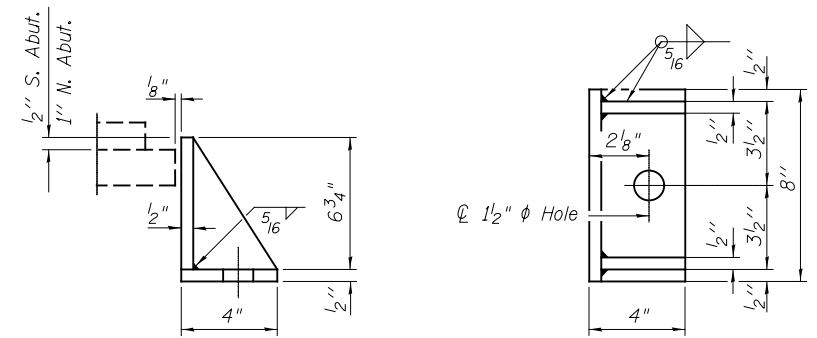
2 Required



SECTION C-C



PINTLE



SIDE RETAINER

Equivalent rolled angle with stiffeners will be allowed in lieu of welded plates.