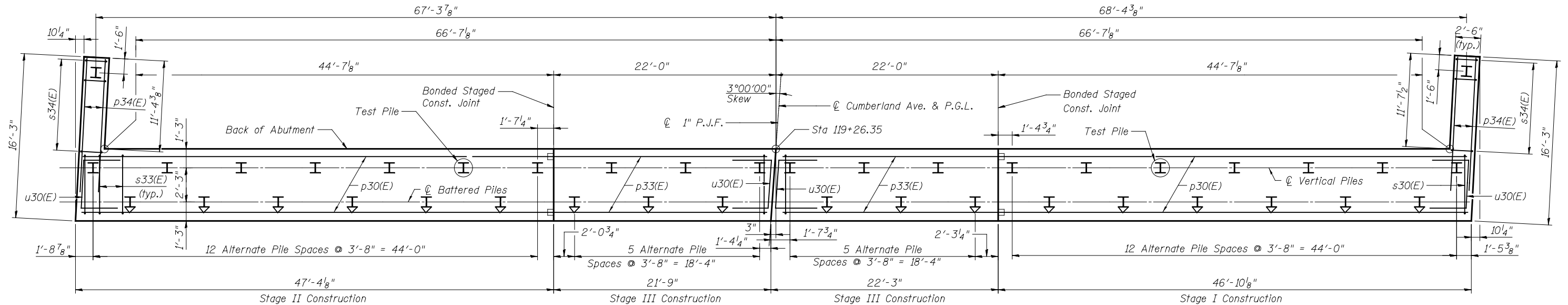
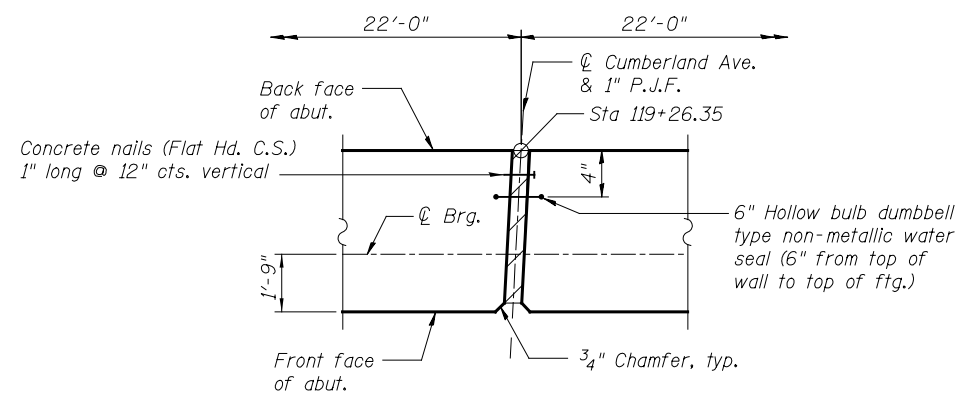


**TOP VIEW**  
(Parapets not shown)



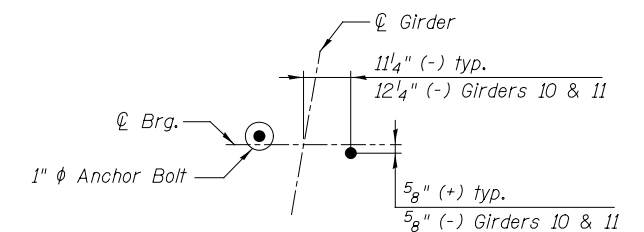
**PLAN-PILE CAP**



**DETAIL A**  
(Section below brg. seat shown, above similar)

**PILE DATA**

Type: HP 12x53  
 Nominal Required Bearing: 418 Kips  
 Factored Resistance Available: 165 Kips  
 Estimated Length: 35 ft.  
 No. Production Piles: 38  
 No. Test Piles: 2  
 ⚡ : Indicates battered pile.



**ANCHOR BOLTS LOCATION**

PATRICK ENGINEERING INC. 4970 VARSITY DRIVE LISLE, IL 60532 patrickengineering.com	USER NAME =	DESIGNED - AD	REVISED	<b>STATE OF ILLINOIS</b> <b>DEPARTMENT OF TRANSPORTATION</b>	<b>NORTH ABUTMENT PLAN</b> <b>STRUCTURE NO. 016-1250</b>	F.A.U. R.T.E. =	SECTION	COUNTY	TOTAL SHEETS	SHEET NO.
	PLOT SCALE =	DRAWN - AD	REVISED			2746	1616B	COOK	404	306
	PLOT DATE =	CHECKED - RDW	REVISED			CONTRACT NO. 60J14				
		DATE - 2/18/2013	REVISED			ILLINOIS FED. AID PROJECT				
SCALE: NONE					SHEET NO. S37 OF S59 SHEETS					

G:\IDOT\21850\_006.CumberlandAve\Drawings\CADD Sheets\0160J14-sht-ts1-north-Abut-1.dgn