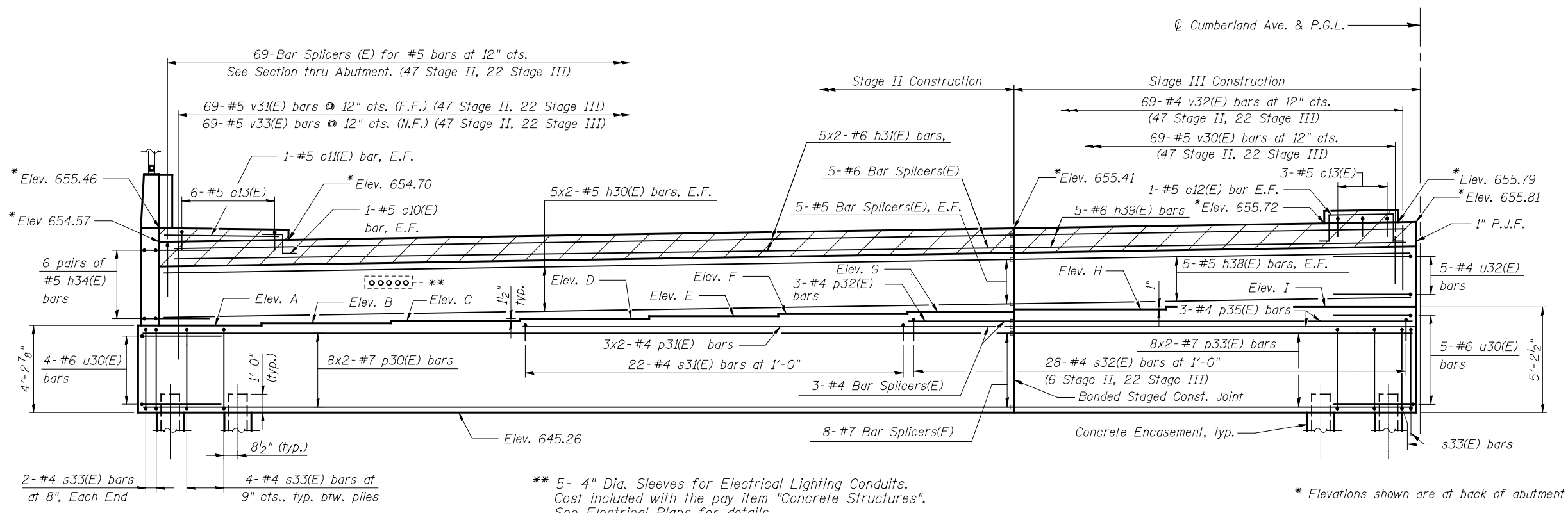


BRIDGE SEAT ELEVATIONS

Elev. A	649.50
Elev. B	649.63
Elev. C	649.76
Elev. D	649.88
Elev. E	650.01
Elev. F	650.14
Elev. G	650.27
Elev. H	650.39
Elev. I	650.47
Elev. J	650.45
Elev. K	650.33
Elev. L	650.18
Elev. M	650.03
Elev. N	649.87
Elev. O	649.72
Elev. P	649.57
Elev. Q	649.42
Elev. R	649.26



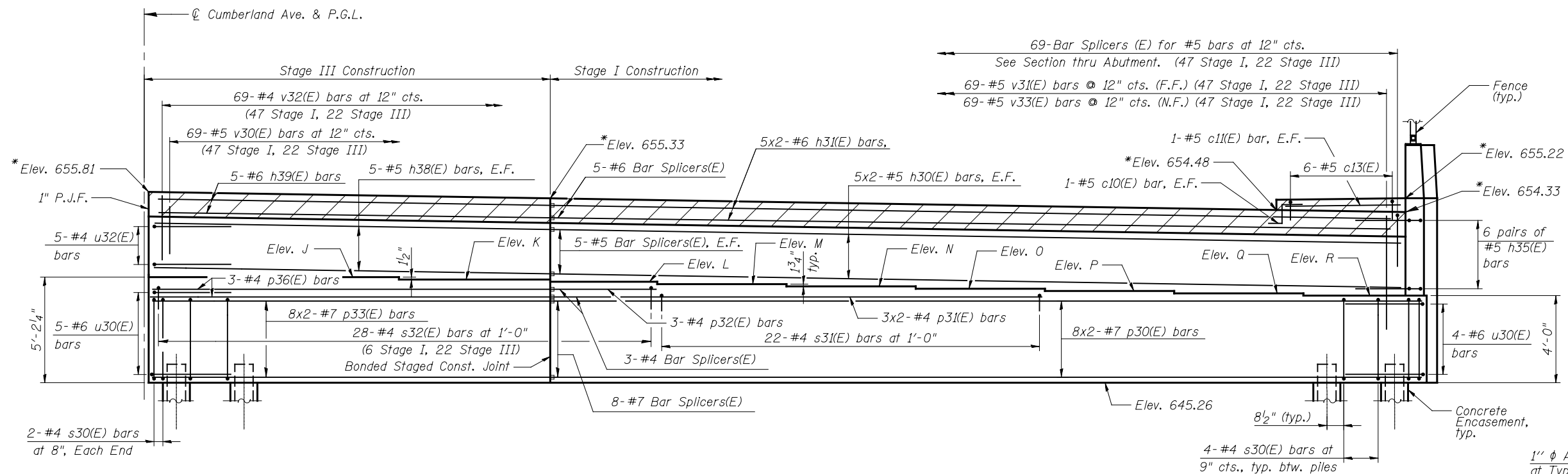
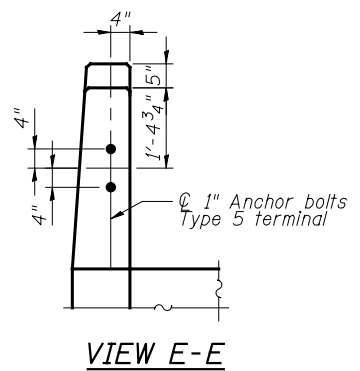
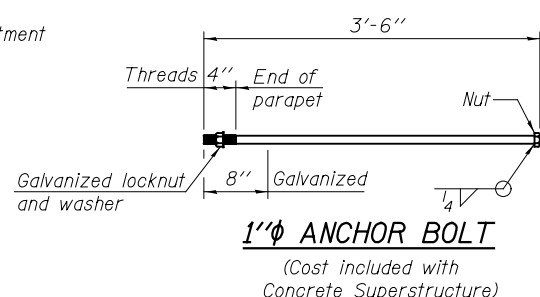
Note:
Hatched area to be poured after superstructure false work has been removed. Quantity of concrete included with concrete superstructure.

** 5- 4" Dia. Sleeves for Electrical Lighting Conduits.
Cost included with the pay item "Concrete Structures".
See Electrical Plans for details.

NORTH ABUTMENT ELEVATION - WEST END
(Wingwall Reinforcement not shown for clarity)

MIN. BAR LAP
#4 Bar = 2'-4"
#5 Bar = 2'-11"
#6 Bar = 3'-10"
#7 Bar = 5'-2"

* Elevations shown are at back of abutment



1" dia Anchor bolts at Type 5 terminal connections only
See View E-E

NORTH ABUTMENT ELEVATION - EAST END
(Wingwall Reinforcement not shown for clarity)

