

**BAR DIMENSIONS**

Bar	A	B
c13(E)	1'-6"	1'-3"
d2(E)	9"	6"
n30(E)	6'-7"	9"
s31(E)	1'-2"	4'-5"
s32(E)	1'-6"	4'-5"
u32(E)	2'-6"	1'-8"

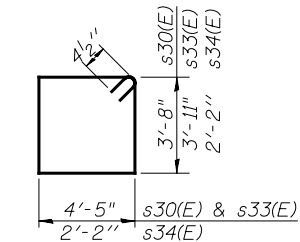
**BARS c13(E), d2(E), n30(E), s31(E), s32(E) & u32(E)**

**BAR c10(E)**

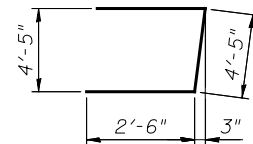
**BAR c12(E)**

**BAR h34(E)**

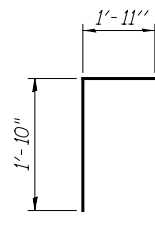
**BAR h35(E)**



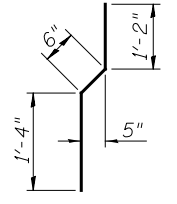
**BARS s30(E), s33(E) & s34(E)**



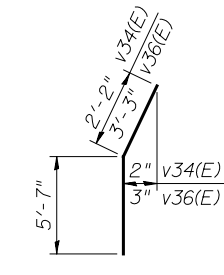
**BAR u30(E)**



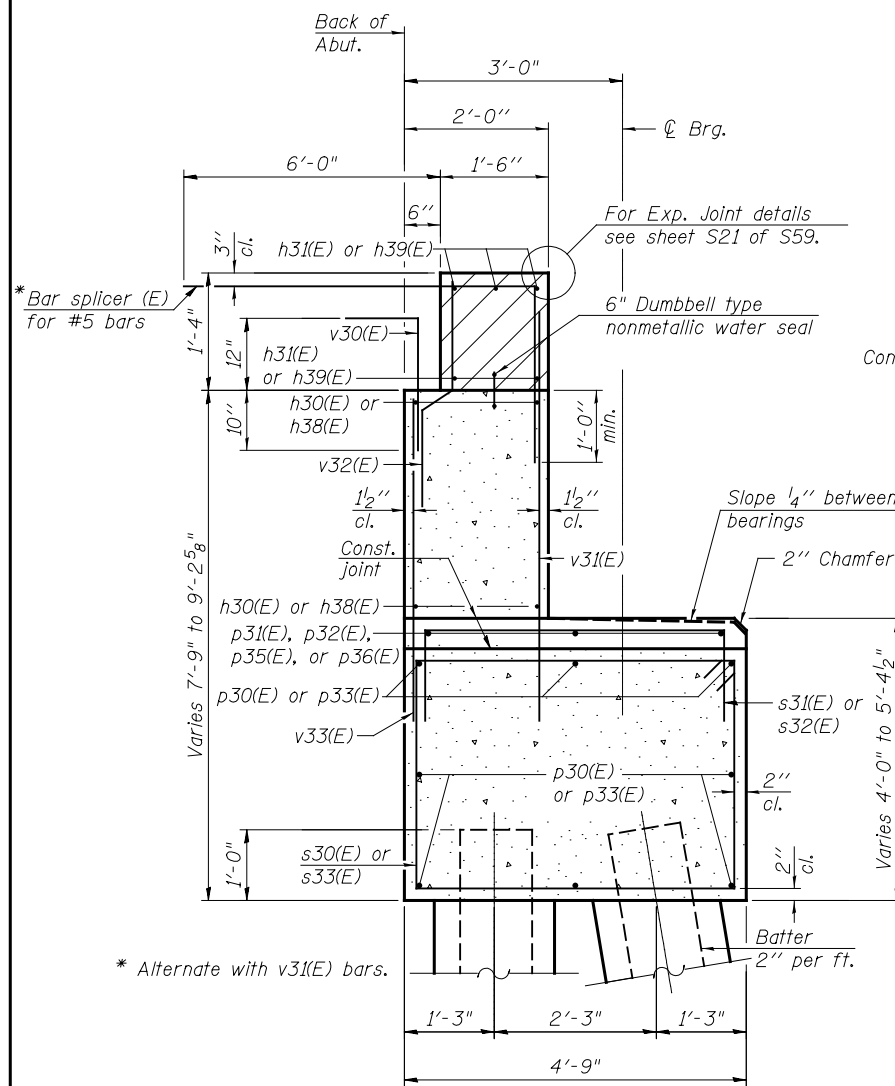
**BAR v30(E)**



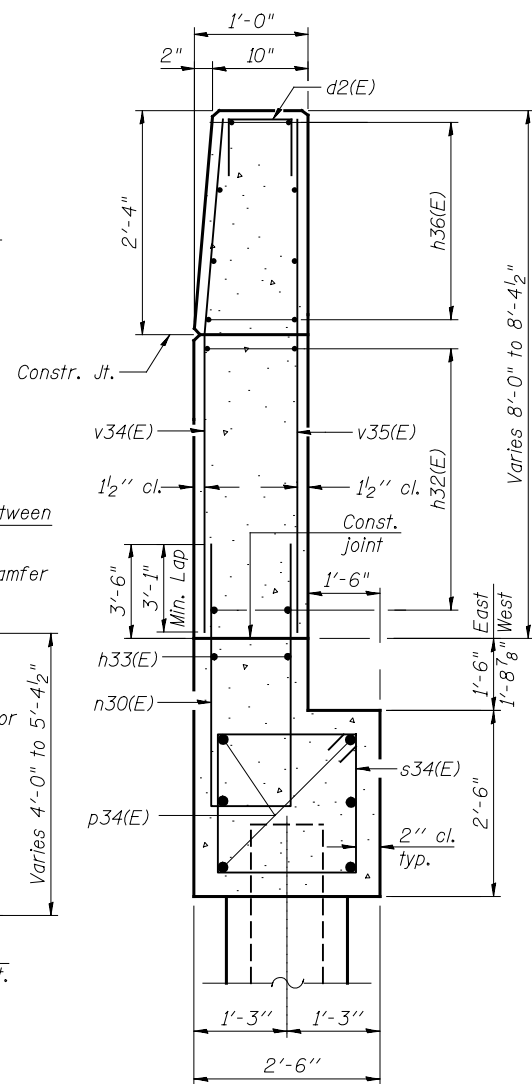
**BAR v32(E)**



**BAR v34(E) & v36(E)**

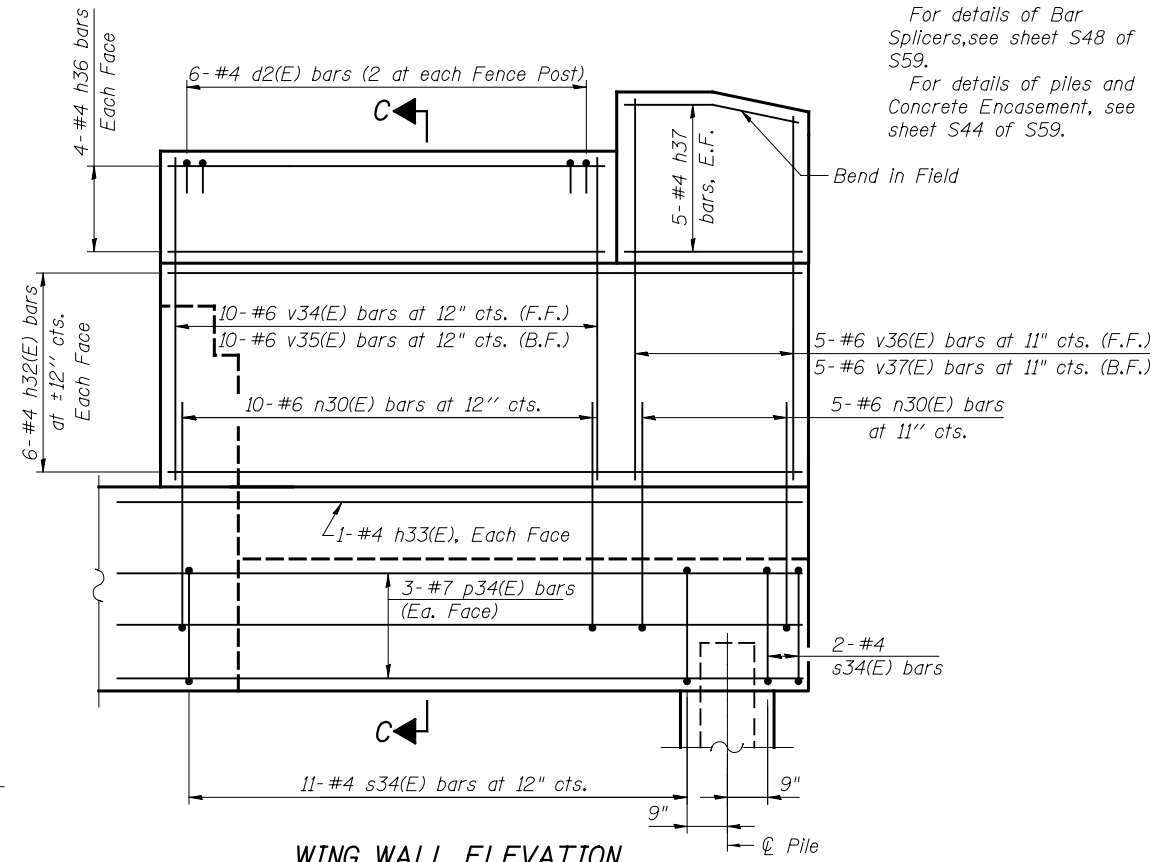


**SECTION THRU ABUTMENT**



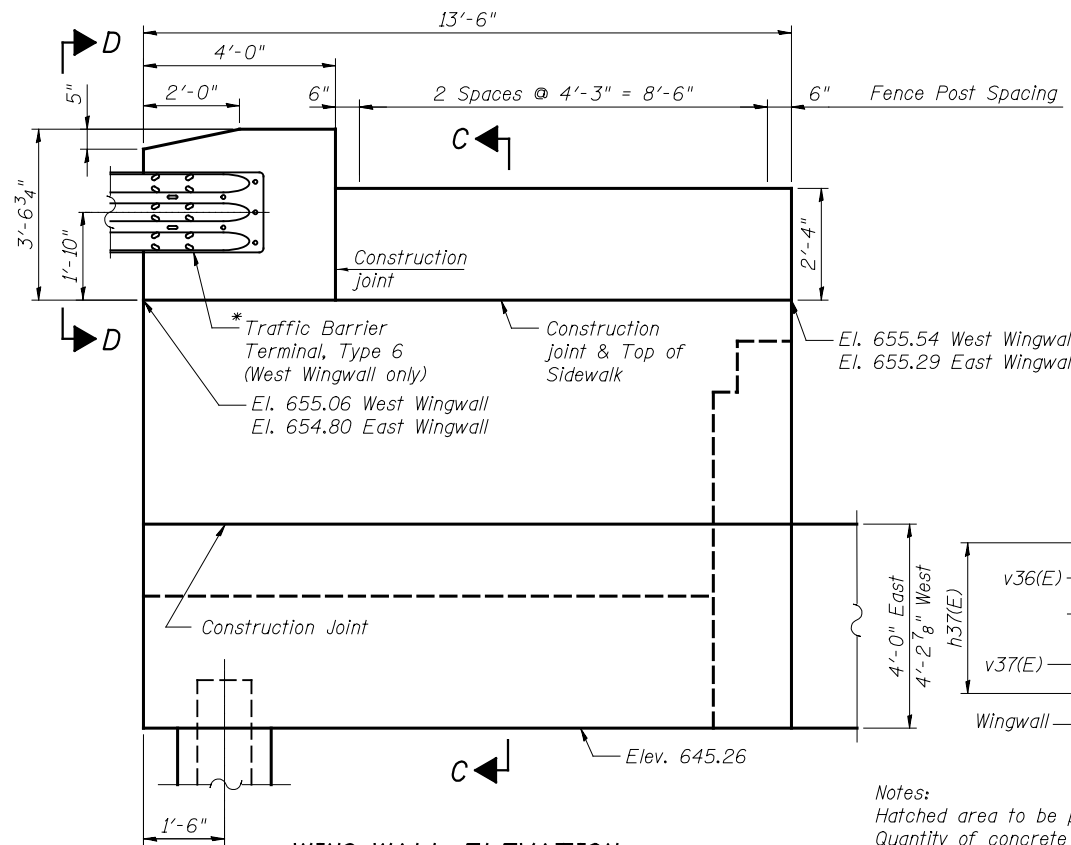
**SECTION C-C**

\* See Sheet S38 of S59 for east end post details.



**WING WALL ELEVATION**

Showing Reinforcement (East Wingwall Looking West)



**WING WALL ELEVATION**

Showing Dimensions (West Wingwall Looking East)

For details of Bar Splicers, see sheet S48 of S59.

For details of piles and Concrete Encasement, see sheet S44 of S59.

**BILL OF MATERIAL**

Bar	No.	Size	Length	Shape
c10(E)	4	#5	2'-4"	
c11(E)	4	#5	6'-8"	
c12(E)	2	#5	7'-8"	
c13(E)	15	#5	4'-3"	
d2(E)	12	#4	2'-0"	
h30(E)	40	#5	25'-1"	
h31(E)	20	#6	25'-10"	
h32(E)	24	#4	13'-2"	
h33(E)	4	#4	15'-9"	
h34(E)	12	#5	5'-0"	
h35(E)	12	#5	5'-0"	
h36(E)	16	#4	9'-2"	
h37(E)	20	#4	3'-8"	
h38(E)	20	#5	21'-8"	
h39(E)	10	#6	21'-8"	
n30(E)	30	#6	13'-11"	
p30(E)	32	#7	27'-0"	
p31(E)	12	#4	14'-4"	
p32(E)	6	#4	5'-1"	
p33(E)	32	#7	13'-7"	
p34(E)	12	#7	15'-9"	
p35(E)	6	#4	21'-6"	
p36(E)	6	#4	21'-9"	
s30(E)	76	#4	16'-11"	
s31(E)	44	#4	6'-9"	
s32(E)	56	#4	7'-5"	
s33(E)	76	#4	17'-5"	
s34(E)	26	#4	9'-5"	
u30(E)	18	#6	9'-5"	
u32(E)	10	#4	6'-8"	
v30(E)	138	#5	3'-9"	
v31(E)	138	#5	7'-1"	
v32(E)	138	#4	3'-0"	
v33(E)	138	#5	6'-1"	
v34(E)	20	#6	7'-9"	
v35(E)	20	#6	7'-9"	
v36(E)	10	#6	8'-10"	
v37(E)	10	#6	8'-10"	
Structure Excavation			Cu. Yd.	625
Concrete Structures			Cu. Yd.	168.1
Reinforcement Bars, Epoxy Coated			Pound	13,360
Furnishing Steel Piles, HP12x53			Foot	1,330
Driving Piles			Foot	1,330
Test Pile Steel HP12x53			Each	2
Concrete Encasement			Cu. Yd.	14.0
Concrete Sealer			Sq. Ft.	1,757
Bar Splicers			Each	196
Protective Coat			Sq. Yd.	10

Notes:  
 Hatched area to be poured after superstructure false work has been removed. Quantity of concrete included with Concrete Superstructure.  
 Space reinforcement in cap to miss anchor bolts.  
 Pour steps monolithically with cap.  
 Quantity of concrete in end post included with Concrete Superstructure on sheet S20 of S59. Concrete sealer shall be applied to the exposed surface of the backwall, entire bridge seat & front face of pile cap.

A-1-D 7-1-10



USER NAME =	DESIGNED - AD	REVISED
PLOT SCALE =	DRAWN - AD	REVISED
PLOT DATE =	CHECKED - RDW	REVISED
	DATE - 2/18/2013	REVISED

**STATE OF ILLINOIS  
 DEPARTMENT OF TRANSPORTATION**

**NORTH ABUTMENT DETAILS  
 STRUCTURE NO. 016-1250**

SCALE: NONE

SHEET NO. S39 OF S59 SHEETS

F.A.U. RTE.	SECTION	COUNTY	TOTAL SHEETS	SHEET NO.
2746	1616B	COOK	404	308
CONTRACT NO. 60J14				

ILLINOIS FED. AID PROJECT