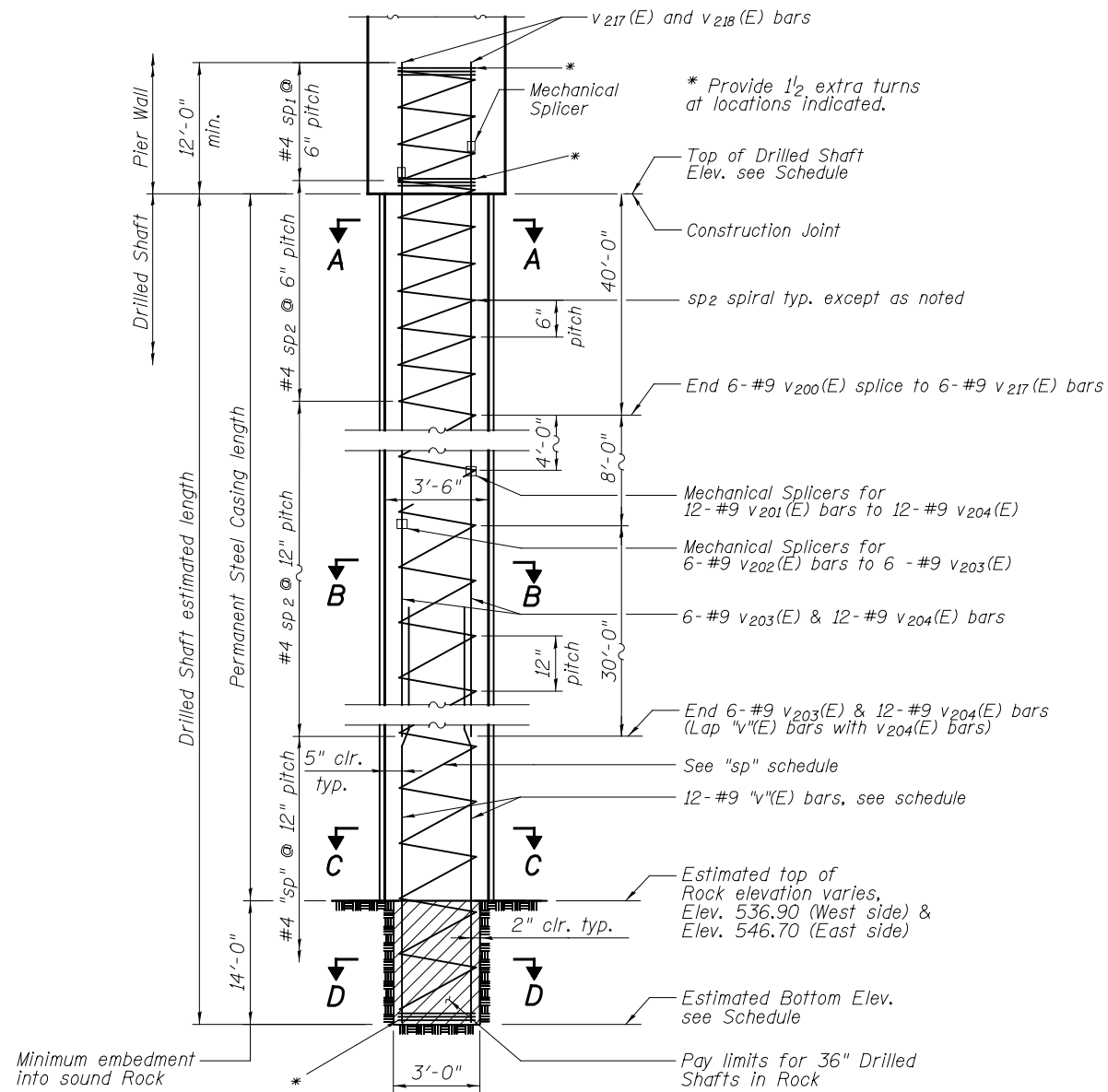


DRILLED SHAFT SCHEDULE

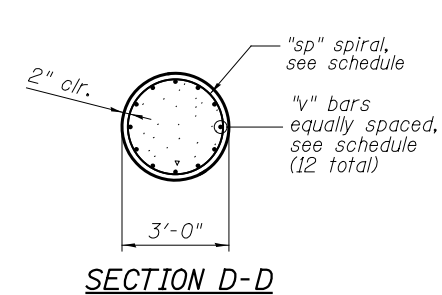
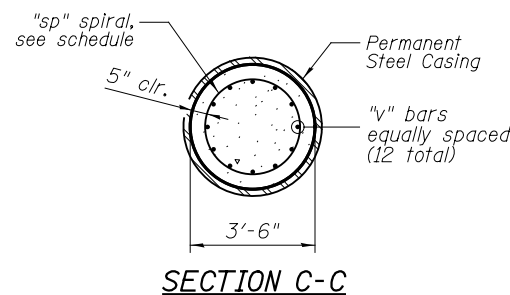
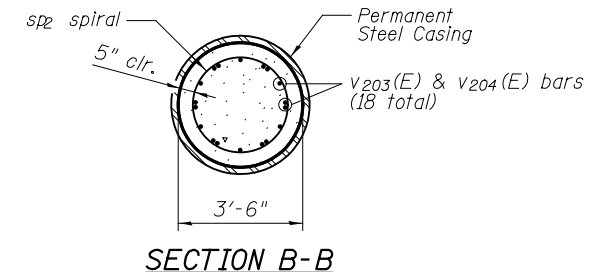
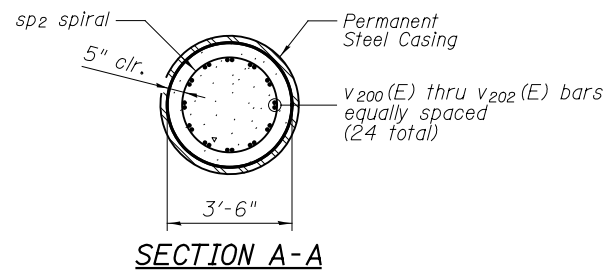
| Caisson Mark | Top Of Drilled Shaft Elev. (ft.) | Estimated Bottom Elev. (ft.) | Estimated Length (ft.) | Permanent Casing Length (ft.) | Reinforcement Bars | | | | |
|--------------|----------------------------------|------------------------------|------------------------|-------------------------------|--------------------|-----|------|-----------|------|
| | | | | | "v" bars | | | "sp" bars | |
| | | | | | Mark | No. | Size | Mark | Size |
| C1 | 632.88 | 523.13 | 109.75 | 95.75 | V205(E) | 12 | #9 | sp3(E) | #4 |
| C2 | 632.88 | 524.02 | 108.86 | 94.86 | V206(E) | 12 | #9 | sp4(E) | #4 |
| C3 | 632.88 | 524.91 | 107.97 | 93.97 | V207(E) | 12 | #9 | sp5(E) | #4 |
| C4 | 632.88 | 525.79 | 107.09 | 93.09 | V208(E) | 12 | #9 | sp6(E) | #4 |
| C5 | 632.88 | 526.68 | 106.20 | 92.20 | V209(E) | 12 | #9 | sp7(E) | #4 |
| C6 | 632.88 | 527.57 | 105.31 | 91.31 | V210(E) | 12 | #9 | sp8(E) | #4 |
| C7 | 632.88 | 528.03 | 104.85 | 90.85 | V211(E) | 12 | #9 | sp9(E) | #4 |
| C8 | 632.88 | 528.92 | 103.96 | 89.86 | V212(E) | 12 | #9 | sp10(E) | #4 |
| C9 | 632.88 | 529.81 | 103.07 | 89.07 | V213(E) | 12 | #9 | sp11(E) | #4 |
| C10 | 632.88 | 530.69 | 102.19 | 88.19 | V214(E) | 12 | #9 | sp12(E) | #4 |
| C11 | 632.88 | 531.58 | 101.30 | 87.30 | V215(E) | 12 | #9 | sp13(E) | #4 |
| C12 | 632.88 | 532.47 | 100.41 | 86.41 | V216(E) | 12 | #9 | sp14(E) | #4 |

Notes:

- The quantities and reinforcement detailing are based on the estimated elevations shown on the plans. The actual elevations may differ at each shaft and corresponding adjustments shall be made to the drilled shaft and reinforcement quantities and payment limits.
- Drilled Shafts factored resistance = 1,100 Kips
- Minimum Concrete $f'c = 4,000$ psi at 14 Days
Reinforcement $f_y = 60,000$ psi
- The Contractor shall be responsible for locating all utilities prior to drilling of shafts.
- Reinforcement bars designated (E) shall be epoxy coated.
- When splicing of spiral reinforcement is necessary, the spirals shall be provided with $1\frac{1}{2}$ extra turns at the ends to be spliced. These additional turns shall either be welded together according to AWS D1.4, or shall both terminate with a 135° standard hook.
- Each longitudinal bar shall be supported by a 3" high Bolster of non-corrosive, durable material.
- Drilled Shafts shall be constructed using permanent casing.
- See sheet S3 of S58 for drilled shaft layout.
- Pay limits for the permanent casing shall be based on the minimum lengths shown.
- Permanent $\frac{3}{8}$ " min. Steel Casing with min. inside diameter equal to or larger than Drilled Shaft diameter. Contractor is responsible for determining the casing thickness and actual tip elevation used.
- Place bars symmetrically about shaft.



TYPICAL DRILLED SHAFT SECTION



BAR LIST

| Bar | No. | Size | Length | Shape |
|------------|-----|------|---------|-------|
| ** sp1(E) | 12 | #4 | 12'-0" | W |
| ** sp2(E) | 24 | #4 | 40'-0" | W |
| ** sp3(E) | 1 | #4 | 29'-9" | W |
| ** sp4(E) | 1 | #4 | 28'-11" | W |
| ** sp5(E) | 1 | #4 | 28'-0" | W |
| ** sp6(E) | 1 | #4 | 27'-2" | W |
| ** sp7(E) | 1 | #4 | 26'-3" | W |
| ** sp8(E) | 1 | #4 | 25'-4" | W |
| ** sp9(E) | 1 | #4 | 24'-11" | W |
| ** sp10(E) | 1 | #4 | 24'-0" | W |
| ** sp11(E) | 1 | #4 | 23'-1" | W |
| ** sp12(E) | 1 | #4 | 22'-3" | W |
| ** sp13(E) | 1 | #4 | 21'-4" | W |
| ** sp14(E) | 1 | #4 | 20'-5" | W |
| v200(E) | 72 | #9 | 41'-0" | — |
| v201(E) | 144 | #9 | 45'-0" | — |
| v202(E) | 72 | #9 | 49'-0" | — |
| v203(E) | 72 | #9 | 30'-0" | — |
| v204(E) | 144 | #9 | 34'-0" | — |
| v205(E) | 12 | #9 | 40'-6" | — |
| v206(E) | 12 | #9 | 39'-6" | — |
| v207(E) | 12 | #9 | 38'-8" | — |
| v208(E) | 12 | #9 | 37'-9" | — |
| v209(E) | 12 | #9 | 36'-10" | — |
| v210(E) | 12 | #9 | 36'-0" | — |
| v211(E) | 12 | #9 | 35'-8" | — |
| v212(E) | 12 | #9 | 34'-8" | — |
| v213(E) | 12 | #9 | 33'-9" | — |
| v214(E) | 12 | #9 | 32'-10" | — |
| v215(E) | 12 | #9 | 32'-0" | — |
| v216(E) | 12 | #9 | 31'-0" | — |
| v217(E) | 144 | #9 | 11'-0" | — |
| v218(E) | 144 | #9 | 7'-0" | — |

** - Length is Height of Spiral

BILL OF MATERIAL

| Item | Unit | Total |
|----------------------------------|--------|---------|
| Reinforcement Bars, Epoxy Coated | Pound | 105,860 |
| Drilled Shaft in Soil | Cu Yd. | 389.5 |
| Drilled Shaft in Rock | Cu Yd. | 44.0 |
| Permanent Casing | Foot | 1093 |
| Mechanical Splicer | Each | 504 |

TYP. LAP SPLICE

| Bar Size | Min. Lap |
|----------|----------|
| #4 | 2'-1" |
| #9 | 8'-7" |