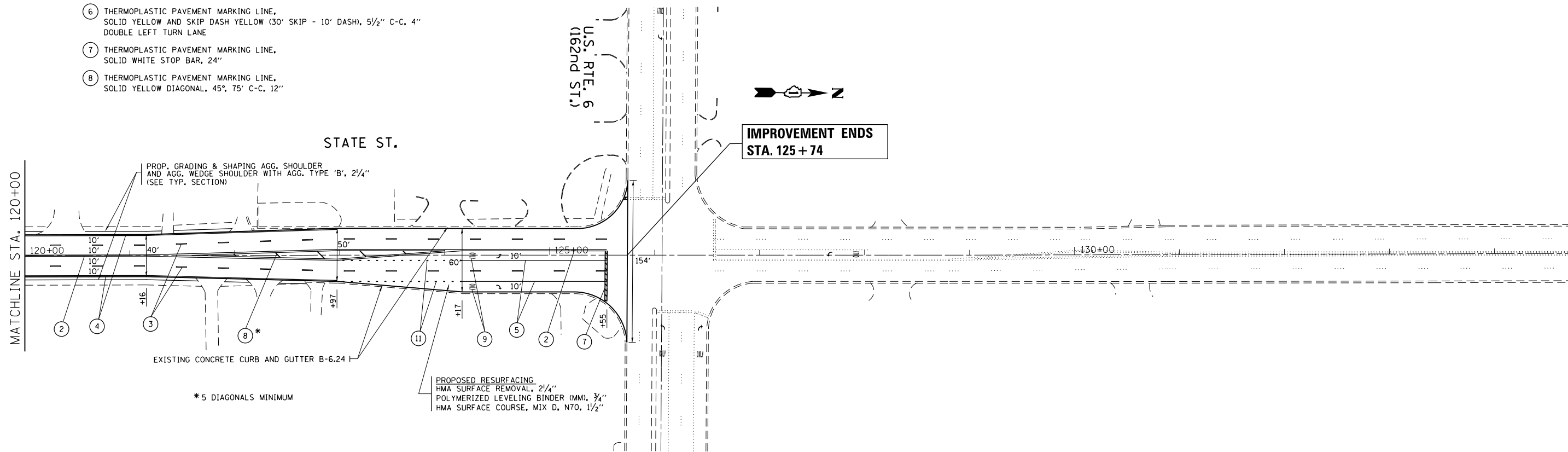


**LEGEND**

- ① THERMOPLASTIC PAVEMENT MARKING LINE, SKIP DASH YELLOW CENTERLINE, 30' SKIP - 10' DASH, 4"
- ② THERMOPLASTIC PAVEMENT MARKING LINE, SOLID DOUBLE YELLOW CENTERLINE, 11" C-C, 4"
- ③ THERMOPLASTIC PAVEMENT MARKING LINE, SKIP DASH WHITE LANE LINE, 30' SKIP - 10' DASH, 4"
- ④ THERMOPLASTIC PAVEMENT MARKING LINE, SOLID WHITE EDGE LINE, 4"
- ⑤ THERMOPLASTIC PAVEMENT MARKING LINE, SOLID WHITE LEFT TURN LANE, 6"
- ⑥ THERMOPLASTIC PAVEMENT MARKING LINE, SOLID YELLOW AND SKIP DASH YELLOW (30' SKIP - 10' DASH), 5/2" C-C, 4" DOUBLE LEFT TURN LANE
- ⑦ THERMOPLASTIC PAVEMENT MARKING LINE, SOLID WHITE STOP BAR, 24"
- ⑧ THERMOPLASTIC PAVEMENT MARKING LINE, SOLID YELLOW DIAGONAL, 45° 75' C-C, 12"
- ⑨ THERMOPLASTIC PAVEMENT MARKING LINE, SOLID WHITE LETTERS & SYMBOLS
- ⑩ THERMOPLASTIC PAVEMENT MARKING LINE, SOLID WHITE SCHOOL CROSSWALK, 12"
- ⑪ THERMOPLASTIC PAVEMENT MARKING LINE, SOLID WHITE DOTTED, 6' SKIP - 2' DASH, 6"

**NOTE:**

-FOR RAISED REFLECTIVE PAVEMENT MARKERS, REFER TO TYPICAL APPLICATIONS RAISED REFLECTIVE PAVEMENT MARKERS (SNOW-PLOW RESISTANT) AND DISTRICT TYPICAL PAVEMENT MARKERS.  
 -FOR SIDE STREETS RESURFACING LIMITS ARE TO RADIUS RETURNS WITH 4.5' BUTT JOINTS, UNLESS OTHERWISE NOTED.



FILE NAME =	USER NAME = lryso	DESIGNED -	REVISED -
et:\pwork\pwork\lryso\d0251679\0111011-ht-plan.dgn		DRAWN -	REVISED -
		CHECKED -	REVISED -
		DATE -	REVISED -

**STATE OF ILLINOIS  
 DEPARTMENT OF TRANSPORTATION**

**PROP. ROADWAY AND PAVEMENT MARKING PLAN  
 STATE ST. ( U.S. RTE. 6 - MARION ST.)**

SCALE: 1"=50' SHEET NO. 04 OF 04 SHEETS STA. 105+00 TO STA. 135+00

F.A.U. RTE.	SECTION	COUNTY	TOTAL SHEETS	SHEET NO.
2906	0104-RS-4	COOK	25	10
CONTRACT NO. 60M43			ILLINOIS FED. AID PROJECT	