

F.A.P. RTE.	SECTION	COUNTY	TOTAL SHEETS	SHEET NO.
112	2010-148-RS	WILL	30	1
		ILLINOIS	CONTRACT NO. 60N24	

**STATE OF ILLINOIS**  
**DEPARTMENT OF TRANSPORTATION**  
**DIVISION OF HIGHWAYS**

**PROPOSED**  
**HIGHWAY PLANS**

**FAP RTE. 112: US RTE. 6 / IL RTE. 53 (SCOTT ST.)**  
**WASHINGTON ST. TO COLUMBIA ST.**  
**SECTION 2010-148-RS**

**RESURFACING (3P)**  
**WILL COUNTY**

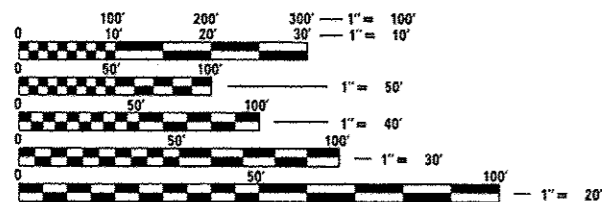
C-91-294-11

FOR INDEX OF SHEETS, SEE SHEET NO. 2

THE PROJECT IS LOCATED IN THE CITY OF JOLIET IN WILL COUNTY.

**TRAFFIC DATA**

2009 / 2010 ADT = 7,200  
 POSTED SPEED LIMIT = 30 MPH

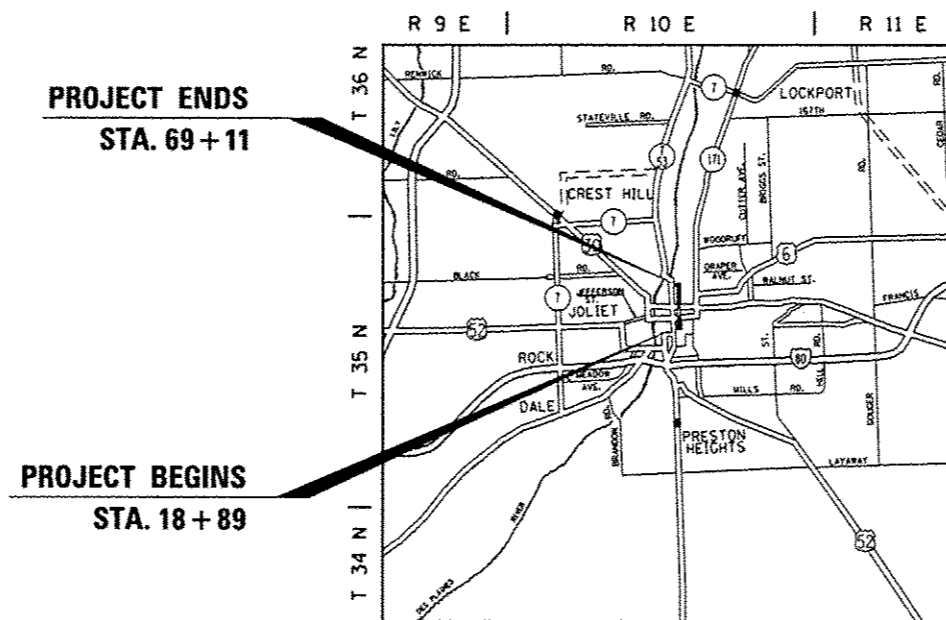


FULL SIZE PLANS HAVE BEEN PREPARED USING STANDARD ENGINEERING SCALES. REDUCED SIZED PLANS WILL NOT CONFORM TO STANDARD SCALES. IN MAKING MEASUREMENTS ON REDUCED PLANS, THE ABOVE SCALES MAY BE USED.

J.U.L.I.E.  
 JOINT UTILITY LOCATION INFORMATION FOR EXCAVATION  
 1-800-892-0123  
 OR 811

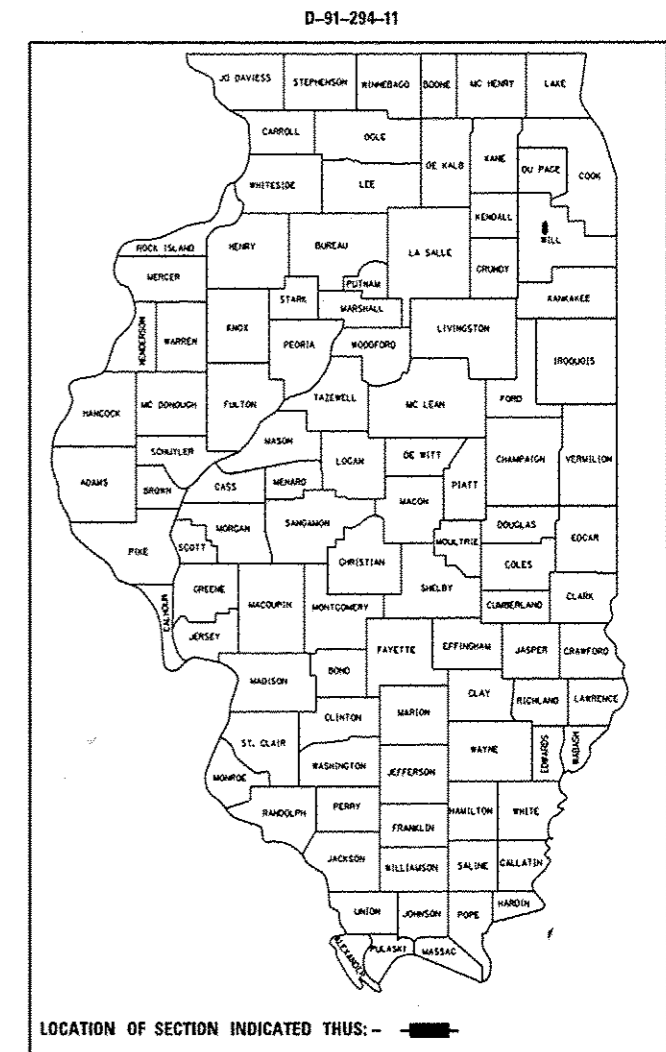
PROJECT ENGINEER: KARI SMITH (847) 705-4437  
 PROJECT MANAGER: KEN ENG (847) 705-4247

CONTRACT NO. 60N24



JOLIET TOWNSHIP

GROSS AND NET LENGTH OF PROJECT = 5,022 FT. = 0.951 MILE



STATE OF ILLINOIS  
 DEPARTMENT OF TRANSPORTATION  
 DIVISION OF HIGHWAYS

SUBMITTED December 20 20 12  
John Fortman  
 DEPUTY DIRECTOR OF HIGHWAYS, REGION ENGINEER

March 22 20 13  
John D. Baranzelli P.E.  
 acting ENGINEER OF DESIGN AND ENVIRONMENT

March 22 20 13  
Omer Osman P.E.  
 DIRECTOR OF HIGHWAYS, CHIEF ENGINEER

**PRINTED BY THE AUTHORITY**  
**OF THE STATE OF ILLINOIS**