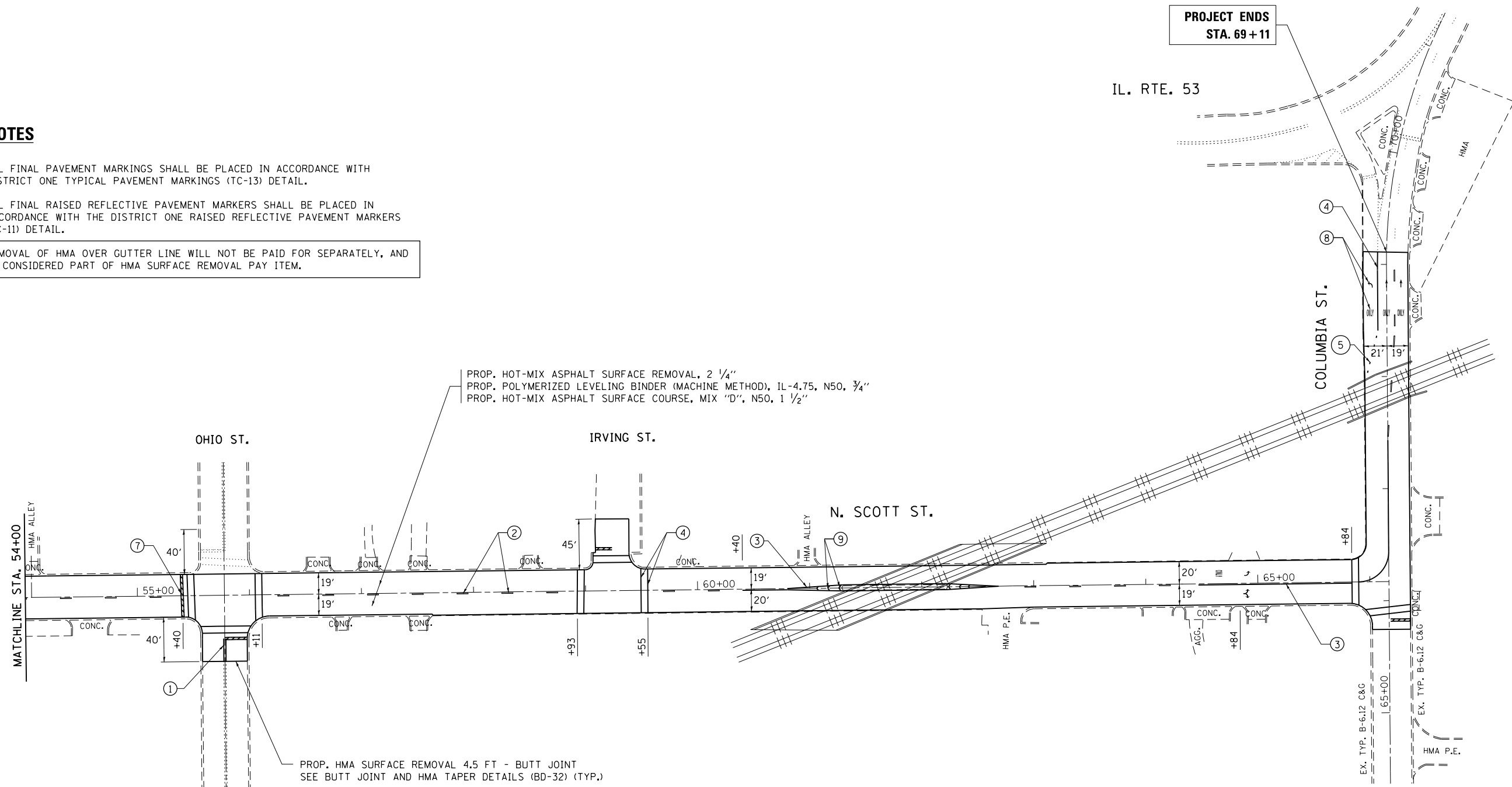


PAVEMENT MARKING LEGEND

- ① THPL PAVT MK, 4" DOUBLE YELLOW LINE, 11" C-C (TYP.)
- ② THPL PAVT MK, 4" WHITE LINE (30' SKIP 10' DASH) (TYP.)
- ③ THPL PAVT MK, 4" WHITE LINE (TYP.)
- ④ THPL PAVT MK, 6" WHITE LINE (TYP.)
- ⑤ THPL PAVT MK, 6" WHITE DOTTED LINE (6' SKIP 2' DASH) (TYP.)
- ⑥ THPL PAVT MK, 12" WHITE CROSSWALK LINE (TYP.)
- ⑦ THPL PAVT MK, 24" WHITE STOP BAR (TYP.)
- ⑧ THPL PAVT MK, LETTERS & SYMBOLS (TYP.)
- ⑨ THPL PAVT MK, 12" WHITE DIAGONALS (TYP.)

NOTES

1. ALL FINAL PAVEMENT MARKINGS SHALL BE PLACED IN ACCORDANCE WITH DISTRICT ONE TYPICAL PAVEMENT MARKINGS (TC-13) DETAIL.
2. ALL FINAL RAISED REFLECTIVE PAVEMENT MARKERS SHALL BE PLACED IN ACCORDANCE WITH THE DISTRICT ONE RAISED REFLECTIVE PAVEMENT MARKERS (TC-11) DETAIL.
3. REMOVAL OF HMA OVER GUTTER LINE WILL NOT BE PAID FOR SEPARATELY, AND IS CONSIDERED PART OF HMA SURFACE REMOVAL PAY ITEM.



FILE NAME =	USER NAME = paraynoal	DESIGNED -	REVISED -	STATE OF ILLINOIS DEPARTMENT OF TRANSPORTATION	US RTE. 6 / IL RTE. 53 (SCOTT ST.) ROADWAY AND PAVEMENT MARKING PLAN	F.A.P. RTE.	SECTION	COUNTY	TOTAL SHEETS	SHEET NO.	
et:\pwork\pwork\paraynoal\0252079\0129411-sht-plan.dgn	9411-sht-plan.dgn	DRAWN -	REVISED -			112	2010-148-R5	WILL	30	9	
PLOT SCALE = 100.0000' / in.	CHECKED -	REVISED -	REVISED -			CONTRACT NO. 60N24					
PLOT DATE = 12/20/2012	DATE -	REVISED -	REVISED -			ILLINOIS FED. AID PROJECT					
					SCALE: 1"=50'	SHEET NO. 3 OF 3 SHEETS	STA. 54+00 TO STA. 69+11				