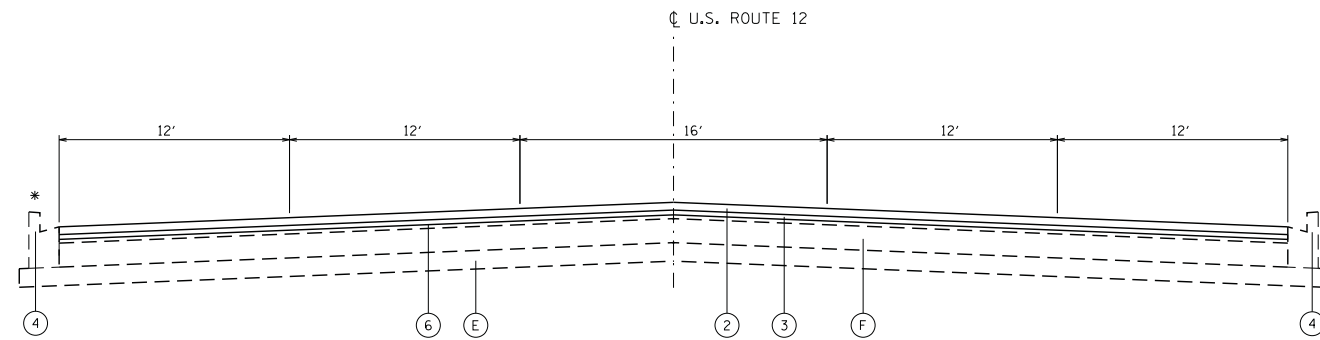


EXISTING TYPICAL SECTION

STA. 491+78 TO STA. 512+00
OMISSION AT STA. 491+78 TO STA. 498+07

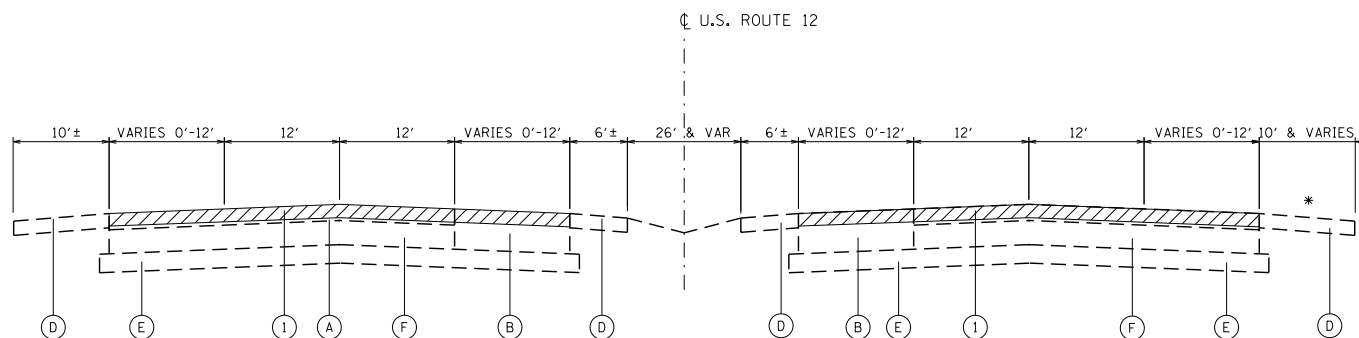
* HMA SHOULDER - STA. 511+90 TO STA. 512+80



PROPOSED TYPICAL SECTION

STA. 491+78 TO STA. 512+00
OMISSION AT STA. 491+78 TO STA. 498+07

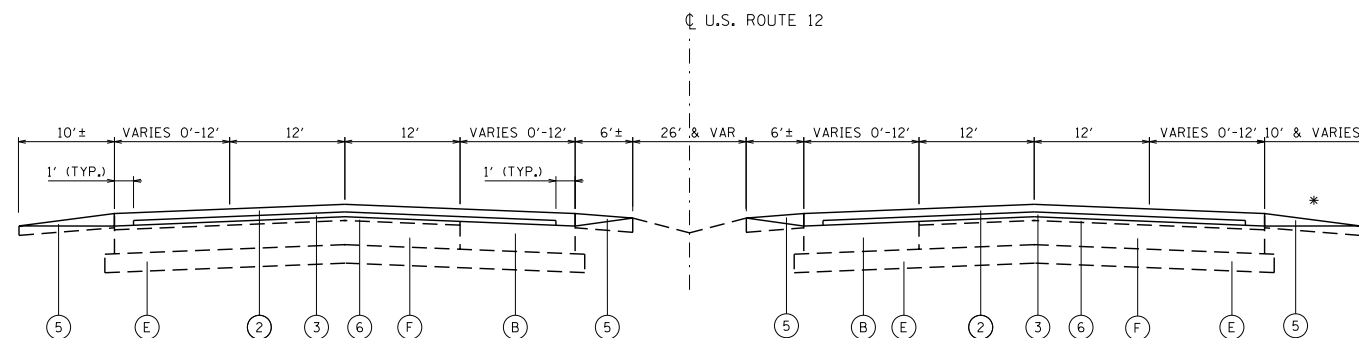
* HMA SHOULDER - STA. 511+90 TO STA. 512+80



EXISTING TYPICAL SECTION

STA. 152+36 TO STA. 491+73
OMISSIONS AT STA. 251+74 TO STA. 255+34 (SB)
STA. 251+22 TO STA. 254+83 (NB)
STA. 321+85 TO STA. 328+60
STA. 405+43 TO STA. 407+59 (NB)
STA. 409+88 TO STA. 411+63 (NB)

* HMA SHOULDER - STA. 325+76 TO STA. 341+70
STA. 390+51 TO STA. 395+98



PROPOSED TYPICAL SECTION

STA. 152+36 TO STA. 491+73
OMISSIONS AT STA. 251+74 TO STA. 255+34 (SB)
STA. 251+22 TO STA. 254+83 (NB)
STA. 321+85 TO STA. 328+60
STA. 405+43 TO STA. 407+59 (NB)
STA. 409+88 TO STA. 411+63 (NB)

* HMA SHOULDER - STA. 325+76 TO STA. 341+70
STA. 390+51 TO STA. 395+98

EXISTING CONDITIONS

- (A) HMA EXISTING RESURFACING, ±4"
- (B) HMA PAVEMENT, ±14"
- (C) COMBINATION CONCRETE CURB AND GUTTER
- (D) AGGREGATE SHOULDERS
- (E) AGGREGATE BASE COURSE
- (F) PCC PAVEMENT, ±10"

PROPOSED IMPROVEMENTS

- (1) HOT-MIX ASPHALT SURFACE REMOVAL, 2 1/2"
- (2) POLYMERIZED HOT-MIX ASPHALT SURFACE COURSE, MIX "F", N90, 1 3/4"
- (3) POLYMERIZED LEVELING BINDER (MACHINE METHOD), IL-4.75, N50, 3/4"
- (4) COMBINATION CONCRETE CURB & GUTTER REMOVAL AND REPLACEMENT (AT LOCATIONS AS DETERMINED BY THE ENGINEER)
- (5) AGGREGATE WEDGE SHOULDER, TYPE B (TAPER 3" TO 1" THICKNESS) - SEE SAFETY EDGE DETAIL
- (6) EXISTING HOT-MIX ASPHALT SURFACE AFTER PROPOSED SURFACE REMOVAL

NOTE:
THE CONTRACTOR SHALL PATCH FIRST BEFORE MILLING. SEE DISTRICT 1
DETAIL PAVEMENT PATCHING FOR HMA SURFACED PAVEMENT.

HOT-MIX ASPHALT MIXTURE REQUIREMENTS

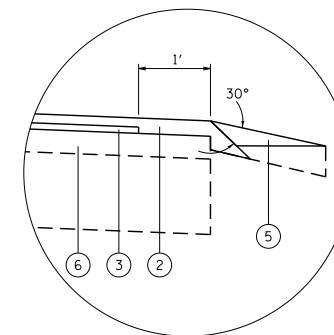
MIXTURE TYPE	AIR VOIDS @ Ndes
PAVEMENT AND SHOULDER RESURFACING	
POLYMERIZED HOT-MIX ASPHALT SURFACE COURSE, MIX "F", N90 (IL-9.5mm)	4% @ 90 GYR.
POLYMERIZED LEVELING BINDER (MACHINE METHOD), IL-4.75, N50	3.5% @ 50 GYR.
PATCHING	
CLASS D PATCHES (HMA BINDER, IL-19mm)	4% @ 70 GYR.
HMA REPLACEMENT OVER PATCHES (HMA BINDER IL-19mm)	4% @ 70 GYR.
DRIVEWAYS	
HMA SURFACE COURSE, MIX "D", N 50 (IL 9.5 mm); 2"	4% @ 50 GYR.
HMA BASE COURSE (HMA BINDER IL-19mm); PE -6", CE -8"	4% @ 50 GYR.

THE UNIT WEIGHT TO CALCULATE ALL HMA SURFACE MIXTURE QUANTITIES IS
112 LBS/SQ YD/IN

THE "AC TYPE" FOR POLYMERIZED HMA MIXES SHALL BE "SBS/SBR PG 76-22" AND FOR
NON-POLYMERIZED HMA THE "AC TYPE" SHALL BE "PG 64-22" UNLESS MODIFIED BY
DISTRICT ONE SPECIAL PROVISIONS.

FOR USE OF RECYCLED MATERIALS SEE DISTRICT 1 SPECIAL PROVISIONS.

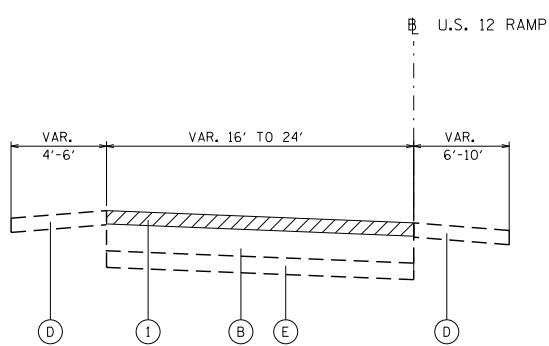
PAY FOR PERFORMANCE SPECIFICATION SHALL ONLY APPLY TO POLYMERIZED HMA SURFACE
COURSE, MIX "F", N90.



RESURFACING TREATMENT AT SHOULDER
AND SAFETY EDGE DETAILS

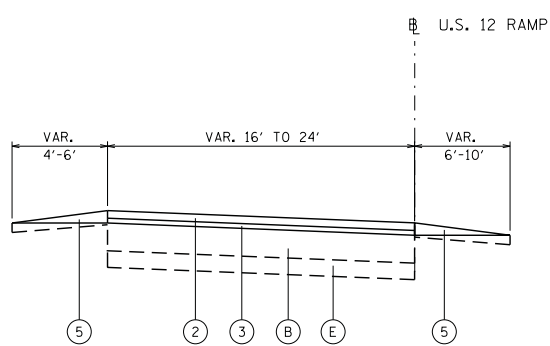
N.T.S.

NOTE: INCREASED THICKNESS OF HMA SURFACE COURSE
ALONG SHOULDER EDGE SHALL BE INCLUDED IN
THE COST OF POLYMERIZED HOT-MIX ASPHALT
SURFACE COURSE, MIX "F", N90



EXISTING TYPICAL SECTION

STA. 20+00 TO STA. 26+29 (NB)
STA. 27+93 TO STA. 43+53 (NB)
STA. 60+00 TO STA. 67+56 (SB)
STA. 69+45 TO STA. 86+81 (SB)



PROPOSED TYPICAL SECTION

STA. 20+00 TO STA. 26+29 (NB)
STA. 27+93 TO STA. 43+53 (NB)
STA. 60+00 TO STA. 67+56 (SB)
STA. 69+45 TO STA. 86+81 (SB)

COMPANY NAME: HRGreen.com
PROJECT CONTACT: Illinois Professional Design Firm #184-001322
DATE PLOTTED: 10/24/2012 9:52:58 AM
FILE NAME: 86100196109-11p-01.dgn
PLOT DRIVER: pdcfplot
PEN TABLE: standard-trans.tbl



USER NAME = spernal	DESIGNED - CMH	REVISED -
PLOT SCALE = N.T.S.	DRAWN - SMP	REVISED -
PLOT DATE = 10/24/2012	CHECKED - TEH	REVISED -
	DATE - 10/24/2012	REVISED -

STATE OF ILLINOIS
DEPARTMENT OF TRANSPORTATION

TYPICAL SECTIONS
U.S. ROUTE 12 (OLD RAND RD/MAIN STREET TO FISH LAKE RD.)

SCALE: N.T.S. SHEET NO. 1 OF 1 SHEETS STA. BEGIN TO STA. END

F.A. RTE.	SECTION	COUNTY	TOTAL SHEETS	SHEET NO.
334	TR-RS-3	LAKE	52	7
CONTRACT NO.			60N25	
FED. ROAD DIST. NO. ILLINOIS FED. AID PROJECT				