

F.A.P. RTE.	SECTION	COUNTY	TOTAL SHEETS	SHEET NO.
307	542R-2-RS	DUPAGE	34	1
		ILLINOIS	CONTRACT NO. 60N47	

STATE OF ILLINOIS  
DEPARTMENT OF TRANSPORTATION  
DIVISION OF HIGHWAYS

**PROPOSED  
HIGHWAY PLANS**

F.A.P. ROUTE 307: ILL 64 (NORTH AVE.)  
VILLA AVENUE TO DUPAGE COUNTY LINE  
SECTION: 542R-2-RS  
RESURFACING (3P) & PCC PAVEMENT PATCHING  
DUPAGE COUNTY

FOR INDEX OF SHEETS, SEE SHEET NO. 2

THIS PROJECT IS LOCATED  
IN THE CITY OF ELMHURST  
& THE VILLAGE OF VILLA PARK

TRAFFIC DATA:

VILLA AVE. TO IL 83 (KINGERY HWY.)  
2011 ADT = 36900  
SPEED LIMIT = 35 MPH

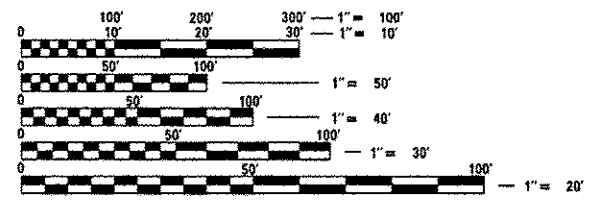
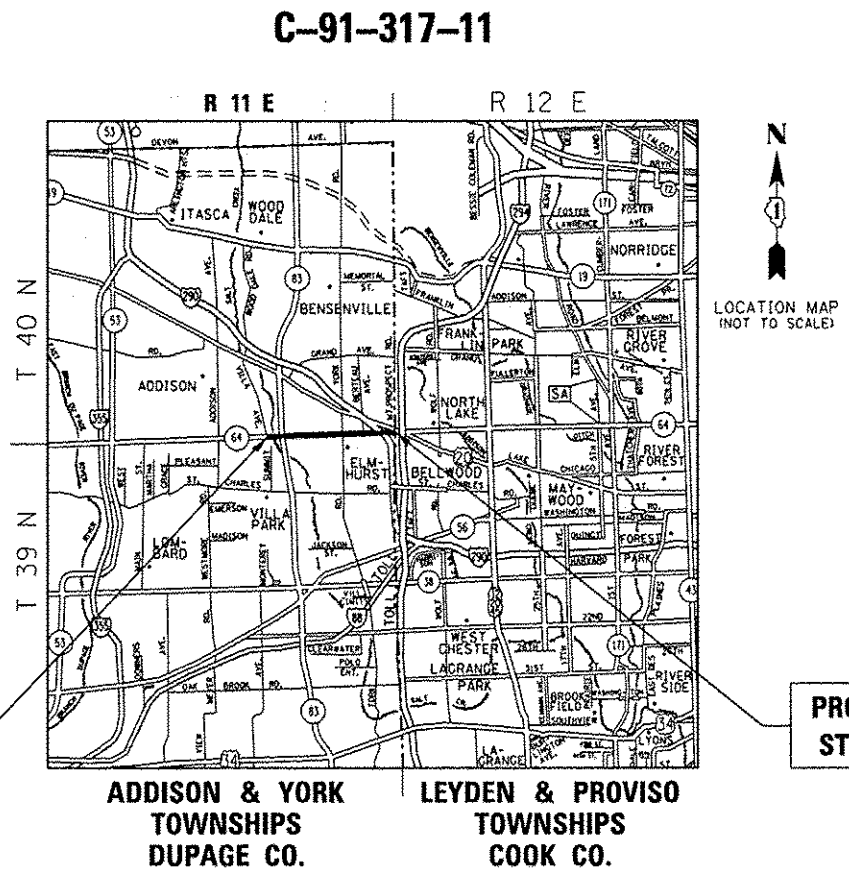
IL 83 (KINGERY HWY.) TO YORK RD.  
2009 ADT = 35800  
SPEED LIMIT = 30 - 35 MPH

YORK RD. TO DUPAGE COUNTY LINE  
2009 ADT = 34200  
SPEED LIMIT = 30 - 40 MPH

OMISSIONS  
STA 23+88 TO STA. 25+81  
STA 31+94 TO STA. 34+76

PROJECT BEGINS  
STA 20+75

PROJECT ENDS  
STA 154+27



FULL SIZE PLANS HAVE BEEN PREPARED USING STANDARD ENGINEERING SCALES. REDUCED SIZED PLANS WILL NOT CONFORM TO STANDARD SCALES. IN MAKING MEASUREMENTS ON REDUCED PLANS, THE ABOVE SCALES MAY BE USED.

J.U.L.I.E.  
JOINT UTILITY LOCATION INFORMATION FOR EXCAVATION  
1-800-892-0123  
OR 811

PROJECT ENGINEER: DAN WILGREEN / (847) 705-4240  
PROJECT MANAGER: KEN ENG / (847) 705-4247

CONTRACT NO. 60N47

GROSS LENGTH = 13,352 FEET = 2.53 MILES  
NET LENGTH = 12,877 FEET = 2.44 MILES

STATE OF ILLINOIS  
DEPARTMENT OF TRANSPORTATION  
DIVISION OF HIGHWAYS

SUBMITTED DECEMBER 13 2012

*John P. ...*  
DEPUTY DIRECTOR OF HIGHWAYS, REGION ENGINEER

March 22 2013  
*John D. ...* PE/10  
ENGINEER OF DESIGN AND ENVIRONMENT

March 22 2013  
*Omara ...* PE/10  
DIRECTOR OF HIGHWAYS, CHIEF ENGINEER

PRINTED BY THE AUTHORITY  
OF THE STATE OF ILLINOIS