

LEGEND

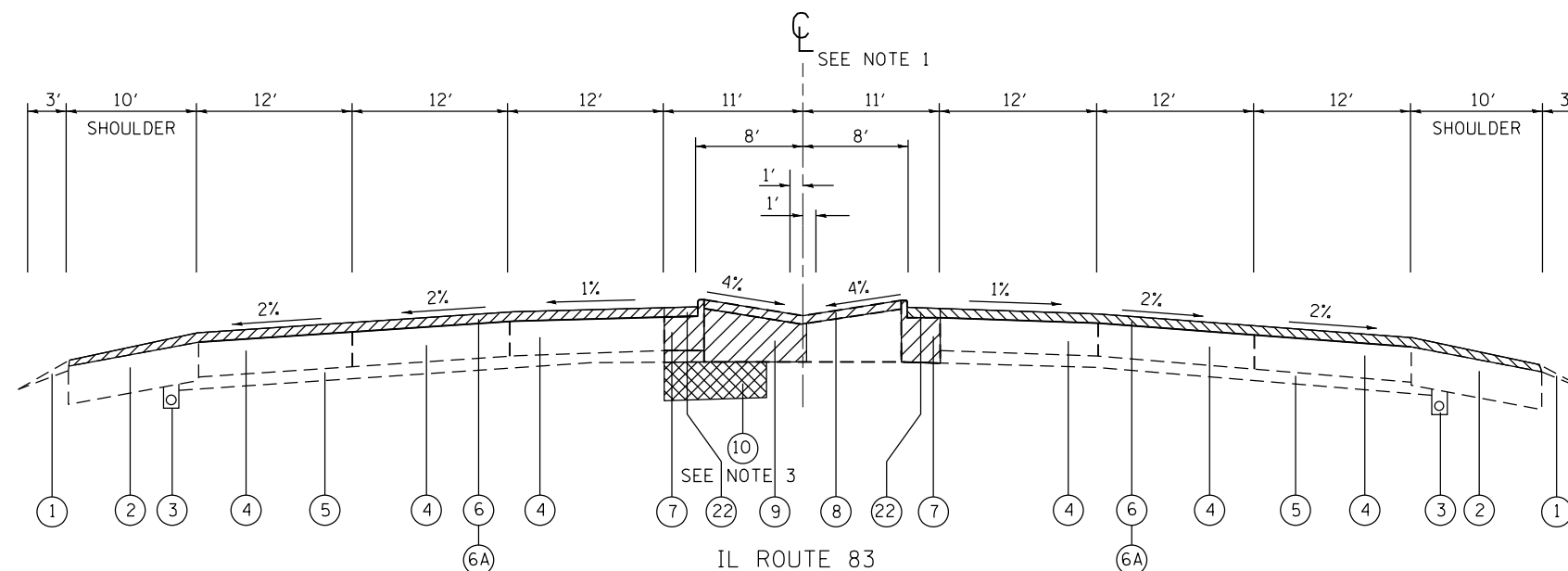
- ① EXIST. AGGREGATE SHOULDER, TYPE B''
- ② EXIST. STABILIZED SHOULDER, 10''
- ③ EXIST. PIPE UNDERDRAIN, 6''
- ④ EXIST. P.C.CONC. PAVEMENT, 10''
- ⑤ EXIST. STABILIZED SUB-BASE, 4''
- ⑥ EXISTING HMA SURFACE, 2 1/2'' (±)
- ⑥A PROPOSED HOT-MIXED ASPHALT SURFACE REMOVAL - 2 1/2''
- ⑦ EXIST. COMB. CONC. CURB AND GUTTER, TYPE B-9.12 OR B-9.24
- ⑧ EXIST. CONC. MEDIAN SURFACE, 4'' TO BE REMOVED
- ⑨ EXIST. SAND FILL TO BE REMOVED AS UNSUITABLE MATERIAL
- ⑩ EARTH EXCAVATED MATERIAL REMOVED AND SALVAGED (SEE NOTE 3)
- ⑪ EXIST. COMB. CONC. CURB AND GUTTER, TYPE B-6.24 (MOD.)
- ⑫ EXIST. SODDED MEDIAN SURFACE
- ⑬ PROPOSED CONCRETE MEDIAN SURFACE REMOVAL AND REPLACEMENT WITH TOPSOIL - VARIABLE DEPTH AND SEEDING, CLASS 2A
- ⑭ PROPOSED CONCRETE MEDIAN SURFACE 5''
- ⑮ POLYMERIZED LEVELING BINDER (MACHINE METHOD), IL-4.75, N50 - 1''
- ⑯ HOT-MIX ASPHALT SURFACE COURSE, MIX "D", N70 (IL-9.5MM) - 2''
- ⑰ POLYMERIZED HOT-MIX ASPHALT SURFACE COURSE, STONE MATRIX ASPHALT, N80 - 2''
- ⑱ PROP. HMA BASE COURSE OR HMA BASE COURSE WIDENING, 10.5'', IL-19, N90
- ⑲A PROP. CONCRETE CURB AND GUTTER, TYPE B-6.24
- ⑲B PROP. CONCRETE CURB AND GUTTER, TYPE B-6.12 OR B-6.24
- ⑳ PROP. 12'' AGGREGATE SUBGRADE IMPROVEMENT
- ㉑ PROP. AGGREGATE WEDGE SHOULDER, TYPE B
- ㉒ HOT-MIXED ASPHALT SURFACE REMOVAL - VARIABLE DEPTH

NOTES

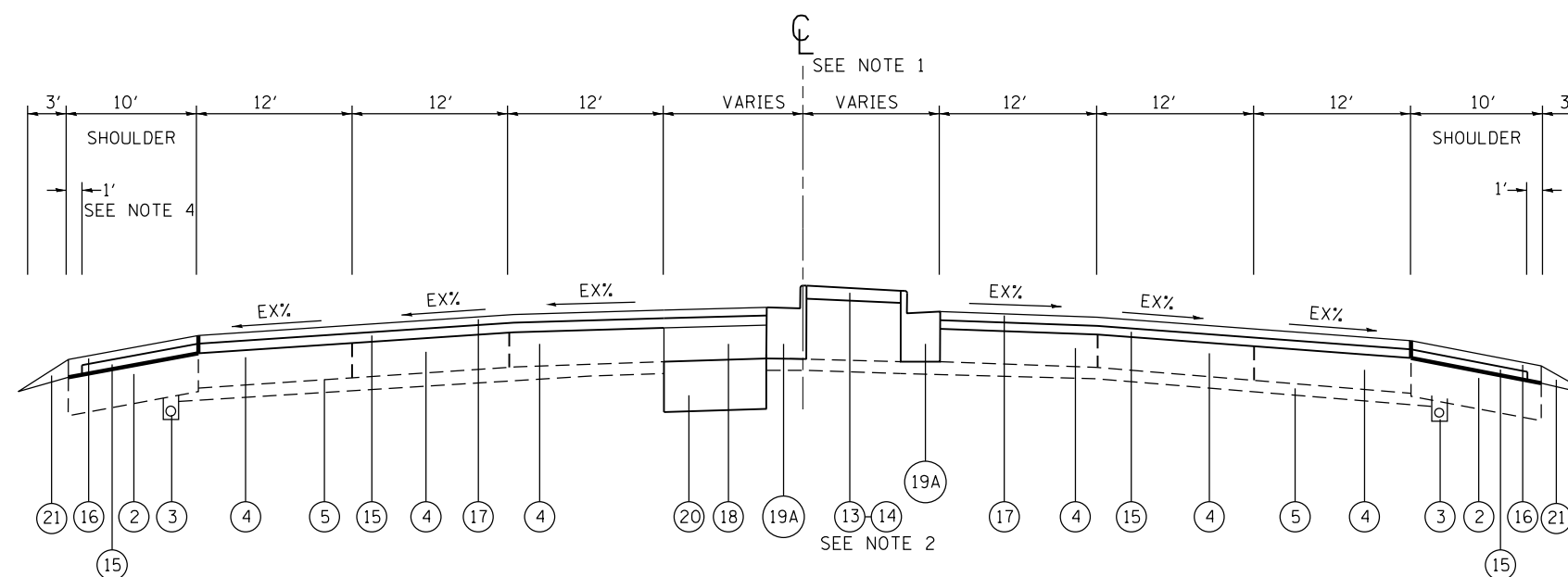
1. MIRROR ABOUT CENTERLINE FOR LEFT TURN LANE EXTENSION FOR SB IL ROUTE 83
2. MEDIAN TO BE REMOVED AND REPLACED WITH STAMPED COLORED PCC MEDIAN SURFACE 5 INCH (SPECIAL).
 STA. 1065+04.30 TO STA. 1065+74.18
 STA. 1071+65.48 TO STA. 1073+86.3
 STA. 1088+93.05 TO STA. 1092+37.84
 STA. 1098+30.45 TO STA. 1098+68.15

 MEDIAN TO BE REMOVED AND REPLACED WITH CONCRETE MEDIAN SURFACE 5 INCH THICK
 STA. 1151+66.52 TO STA. 1153+47.8
 STA. 1158+99.50 TO STA. 1161+85.75

 MEDIAN TO BE REMOVED AND REPLACED TOPSOIL (VARIABLE DEPTH) AND SEEDING, CLASS 2A
 STA. 1063+48.3 TO STA. 1065+04.30
 STA. 1073+86.3 TO STA. 1075+42.2
 STA. 1087+37.1 TO STA. 1088+93.05
 STA. 1098+68.15 TO STA. 1100+24.10
 STA. 1149+86.40 TO STA. 1151+66.52
3. EARTH EXCAVATED MATERIAL REMOVED FROM LOCATIONS OF LEFT TURN LANE WIDENING/EXTENSION AREAS SHALL BE SALVAGED AND USED AS FILL MATERIAL FOR THE PROPOSED DITCH/SWALE BETWEEN DEVON AVE. AND MARK ST. MATERIAL MUST REMAIN ON SITE.
4. PLACEMENT OF POLYMERIZED LEVELING BINDER SHALL STOP ONE FOOT FROM THE EDGE OF SHOULDER (NO CURB AND GUTTER PRESENT). SURFACE MIX SHALL BE USED FULL DEPTH WITHIN THE REMAINING FOOT.



IL ROUTE 83
 STA. 1063+48.30 TO STA. 1065+74.18
 STA. 1071+65.48 TO STA. 1075+42.22
 STA. 1087+37.10 TO STA. 1092+37.84
 STA. 1098+30.45 TO STA. 1100+24.10
 STA. 1149+86.41 TO STA. 1153+47.80
 STA. 1158+99.54 TO STA. 1161+85.75
 EXISTING TYPICAL SECTION



IL ROUTE 83
 STA. 1063+48.30 TO STA. 1065+74.18
 STA. 1071+65.48 TO STA. 1075+42.22
 STA. 1087+37.10 TO STA. 1092+37.84
 STA. 1098+30.45 TO STA. 1100+24.10
 STA. 1149+86.41 TO STA. 1153+47.80
 STA. 1158+99.54 TO STA. 1161+85.75
 PROPOSED TYPICAL SECTION

FILE NAME =	USER NAME = ledezmar	DESIGNED -	REVISED - RL 3/15/2013	STATE OF ILLINOIS DEPARTMENT OF TRANSPORTATION	IL ROUTE 83 IL 19 (IRVING PARK RD.) TO IL 72 (OAKTON ST.)	F.A.P. RTE.	SECTION	COUNTY	TOTAL SHEETS	SHEET NO.
et:\pw\work\p\idot\ledezmar\d0315650\DI1911-sh-t-plan.dgn	DRAWN -	REVISED -	344			540R-RS-2	DUPAGE&COOK	49	7	
MODELNAME	PLOT SCALE = 100.0000' / in.	CHECKED -	REVISED -			CONTRACT NO. 60N49			ILLINOIS FED. AID PROJECT	
	PLOT DATE = 3/15/2013	DATE -	REVISED -			SCALE:	SHEET	OF	SHEETS	STA.