

F.A.P. RTE.	SECTION	COUNTY	TOTAL SHEETS	SHEET NO.
333	16-RS-9	LAKE	21	1
		ILLINOIS	CONTRACT NO. 60N79	

D-91-360-11

STATE OF ILLINOIS  
DEPARTMENT OF TRANSPORTATION  
DIVISION OF HIGHWAYS

**PROPOSED  
HIGHWAY PLANS**

FAP ROUTE 333 IL 120 (BELVIDERE RD)  
IL 60 TO BACON ROAD  
SECTION 16-RS-9

LAKE COUNTY  
ROADWAY RESURFACING

C-91-360-11

FOR INDEX OF SHEETS, SEE SHEET NO. 2  
\*\*\*\*\*

TRAFFIC DATA  
\*\*\*\*\*

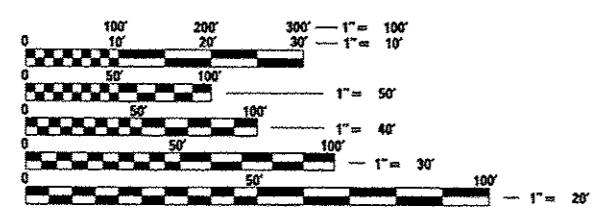
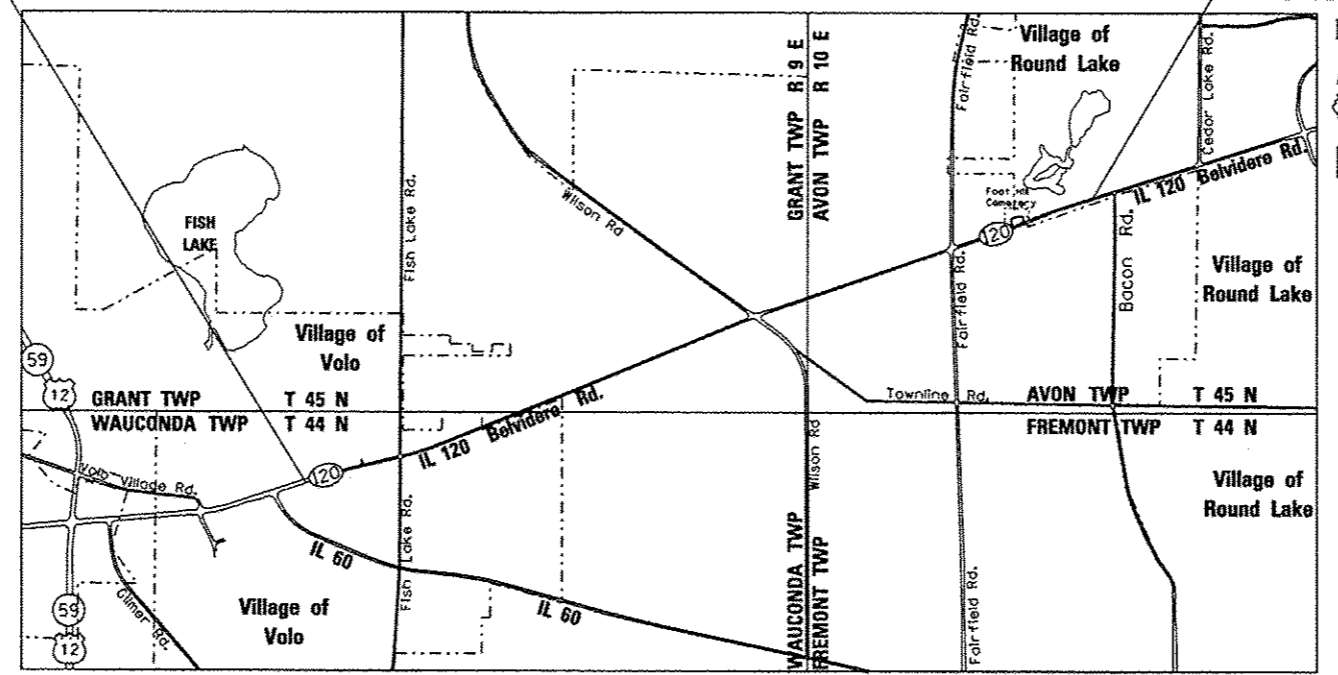
EXISTING ADT IL 120: 20,500 (2009)  
POSTED SPEED LIMIT 55 MPH



PROJECT BEGINS  
STA. 57 + 50

PROJECT ENDS  
STA. 194 + 00

PROJECT IS LOCATED IN THE VILLAGE OF VOLO AND ROUND LAKE



FULL SIZE PLANS HAVE BEEN PREPARED USING STANDARD ENGINEERING SCALES. REDUCED SIZED PLANS WILL NOT CONFORM TO STANDARD SCALES. IN MAKING MEASUREMENTS ON REDUCED PLANS, THE ABOVE SCALES MAY BE USED.

J.U.L.I.E.  
JOINT UTILITY LOCATION INFORMATION FOR EXCAVATION  
1-800-892-0123  
OR 811

PROJECT ENGINEER ROBERT BORO (847) 705-4237  
PROJECT MANAGER ISSAM RAYYAN

CONTRACT NO. 60N79



LOCATION MAP  
NOT TO SCALE  
GROSS LENGTH = 13,650 FT. = 2.59 MILE  
NET LENGTH = 13,650 FT. = 2.59 MILE



THOMAS M. HEIN, P. E.  
IL. LIC. NO. 062-053199  
EXP 11-30-2013  
DATE 12-12-2012

STATE OF ILLINOIS  
DEPARTMENT OF TRANSPORTATION  
DIVISION OF HIGHWAYS  
SUBMITTED December 14, 2012  
John Fortmann, DEPUTY DIRECTOR OF HIGHWAYS, REGION ENGINEER  
March 22, 2013  
John D. Baranzoni, P.E., acting ENGINEER OF DESIGN AND ENVIRONMENT  
March 22, 2013  
Omer Osman, P.E., DIRECTOR OF HIGHWAYS, CHIEF ENGINEER

PRINTED BY THE AUTHORITY  
OF THE STATE OF ILLINOIS