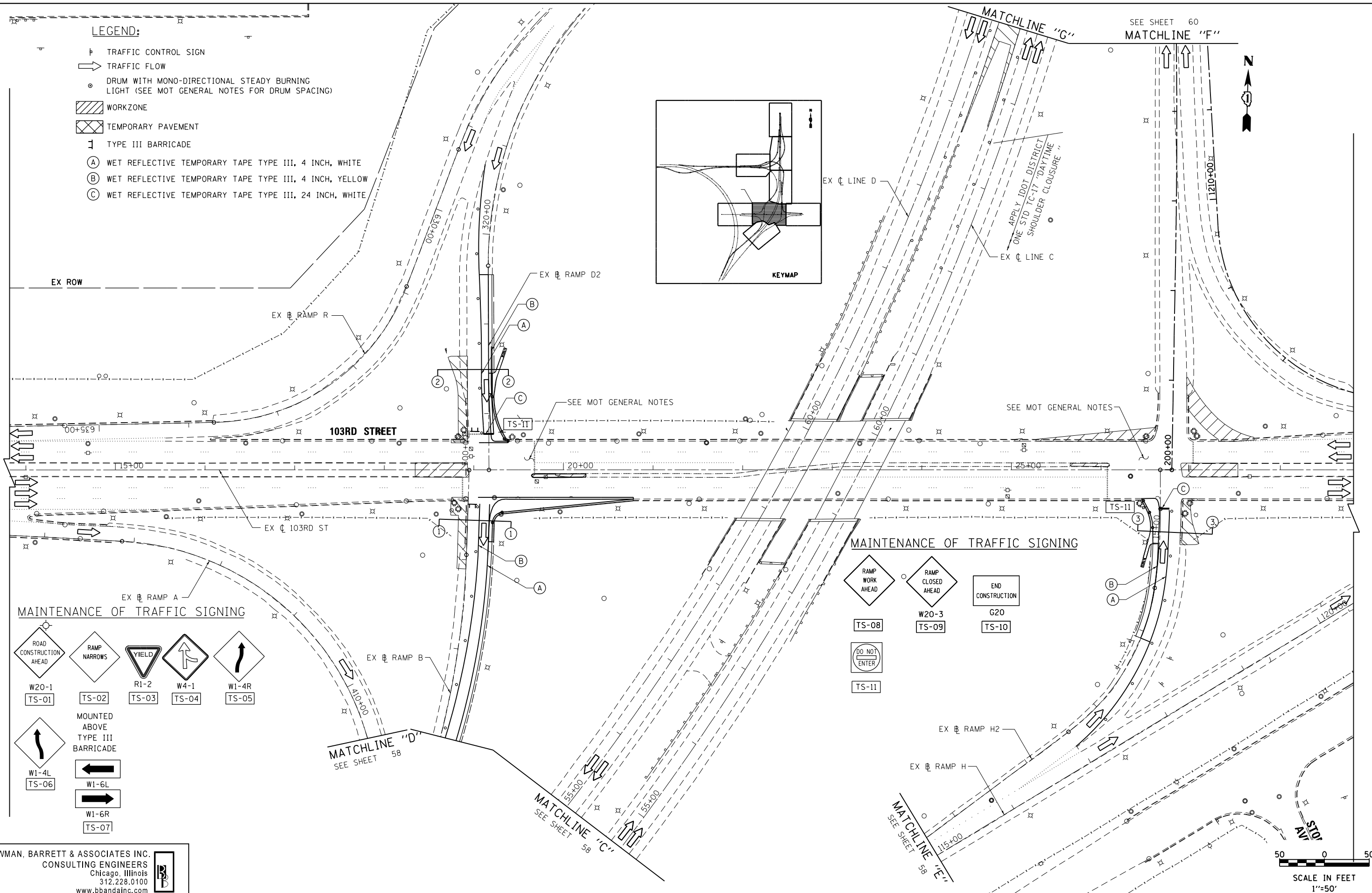
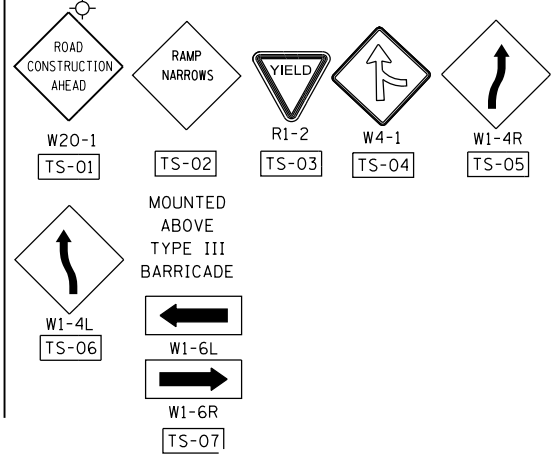


LEGEND:

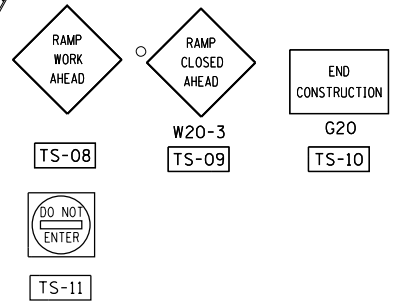
- ⊣ TRAFFIC CONTROL SIGN
- TRAFFIC FLOW
- ⊙ DRUM WITH MONO-DIRECTIONAL STEADY BURNING LIGHT (SEE MOT GENERAL NOTES FOR DRUM SPACING)
- ▨ WORKZONE
- ▩ TEMPORARY PAVEMENT
- ⌋ TYPE III BARRICADE
- (A) WET REFLECTIVE TEMPORARY TAPE TYPE III, 4 INCH, WHITE
- (B) WET REFLECTIVE TEMPORARY TAPE TYPE III, 4 INCH, YELLOW
- (C) WET REFLECTIVE TEMPORARY TAPE TYPE III, 24 INCH, WHITE



MAINTENANCE OF TRAFFIC SIGNING



MAINTENANCE OF TRAFFIC SIGNING



BOWMAN, BARRETT & ASSOCIATES INC.
 CONSULTING ENGINEERS
 Chicago, Illinois
 312.228.0100
 www.bbainc.com

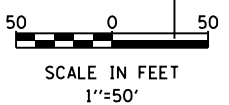
FILE NAME =	USER NAME = default	DESIGNED - OC	REVISED -
*FILE#		DRAWN - OC	REVISED -
	PLOT SCALE = *SCALE*	CHECKED -	REVISED -
	PLOT DATE = 1/4/2013	DATE - 11/08/2012	REVISED -

**STATE OF ILLINOIS
 DEPARTMENT OF TRANSPORTATION**

**MAINTENANCE OF TRAFFIC - STAGE 1A
 103RD STREET**

SCALE: 1"=50' SHEET NO. 7 OF 7 SHEETS STA. TO STA.

F.A.I. RTE.	SECTION	COUNTY	TOTAL SHEETS	SHEET NO.
94	2012-060-BR	COOK	285	64
CONTRACT NO. 60V61				
ILLINOIS FED. AID PROJECT				



S:\1072-05-CADD\1060V61_Sheets\1060V61-sh1-Stage 1A.dwg