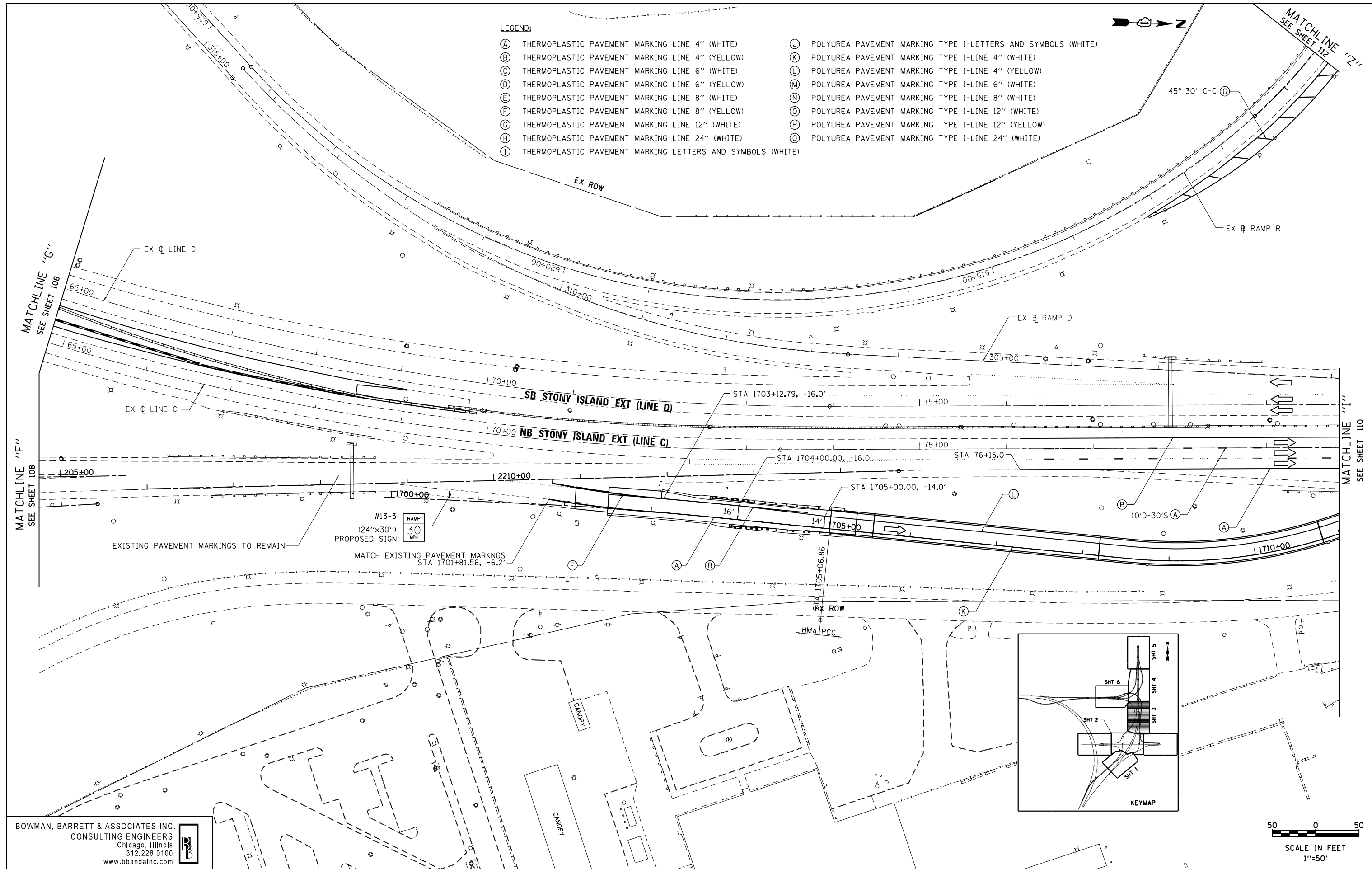


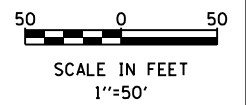
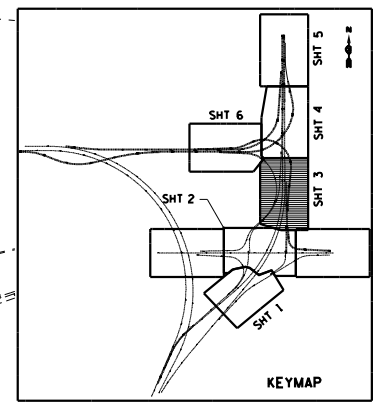
LEGEND:

- | | |
|--|--|
| (A) THERMOPLASTIC PAVEMENT MARKING LINE 4" (WHITE) | (J) POLYUREA PAVEMENT MARKING TYPE I-LINE 4" (WHITE) |
| (B) THERMOPLASTIC PAVEMENT MARKING LINE 4" (YELLOW) | (K) POLYUREA PAVEMENT MARKING TYPE I-LINE 4" (YELLOW) |
| (C) THERMOPLASTIC PAVEMENT MARKING LINE 6" (WHITE) | (L) POLYUREA PAVEMENT MARKING TYPE I-LINE 6" (WHITE) |
| (D) THERMOPLASTIC PAVEMENT MARKING LINE 6" (YELLOW) | (M) POLYUREA PAVEMENT MARKING TYPE I-LINE 6" (YELLOW) |
| (E) THERMOPLASTIC PAVEMENT MARKING LINE 8" (WHITE) | (N) POLYUREA PAVEMENT MARKING TYPE I-LINE 8" (WHITE) |
| (F) THERMOPLASTIC PAVEMENT MARKING LINE 8" (YELLOW) | (O) POLYUREA PAVEMENT MARKING TYPE I-LINE 8" (YELLOW) |
| (G) THERMOPLASTIC PAVEMENT MARKING LINE 12" (WHITE) | (P) POLYUREA PAVEMENT MARKING TYPE I-LINE 12" (WHITE) |
| (H) THERMOPLASTIC PAVEMENT MARKING LINE 12" (YELLOW) | (Q) POLYUREA PAVEMENT MARKING TYPE I-LINE 12" (YELLOW) |
| (I) THERMOPLASTIC PAVEMENT MARKING LINE 24" (WHITE) | (R) POLYUREA PAVEMENT MARKING TYPE I-LINE 24" (WHITE) |
| (S) THERMOPLASTIC PAVEMENT MARKING LETTERS AND SYMBOLS (WHITE) | |



EXISTING PAVEMENT MARKINGS TO REMAIN

W13-3 RAMP
(24"x30")
PROPOSED SIGN
MATCH EXISTING PAVEMENT MARKINGS
STA 1701+81.56, -6.2'



BOWMAN, BARRETT & ASSOCIATES INC.
CONSULTING ENGINEERS
Chicago, Illinois
312.228.0100
www.bbainc.com

FILE NAME = *FILEL\$	USER NAME = default	DESIGNED - JK	REVISED -
		DRAWN - JK	REVISED -
		CHECKED - RR	REVISED -
		DATE - 11/08/2012	REVISED -

**STATE OF ILLINOIS
DEPARTMENT OF TRANSPORTATION**

**PROPOSED PAVEMENT MARKING & SIGNING PLAN
STONY ISLAND EXTENSION - RAMP Q**

SCALE: 1"=50' SHEET NO. 3 OF 6 SHEETS STA. TO STA.

F.A.I. RTE. 94	SECTION 2012-060-BR	COUNTY COOK	TOTAL SHEETS 285	SHEET NO. 109
CONTRACT NO. 60V61			ILLINOIS FED. AID PROJECT	

S:\1072\05_CADD\1060\61_Sheets\1060\61-shk-pmk_03.dgn