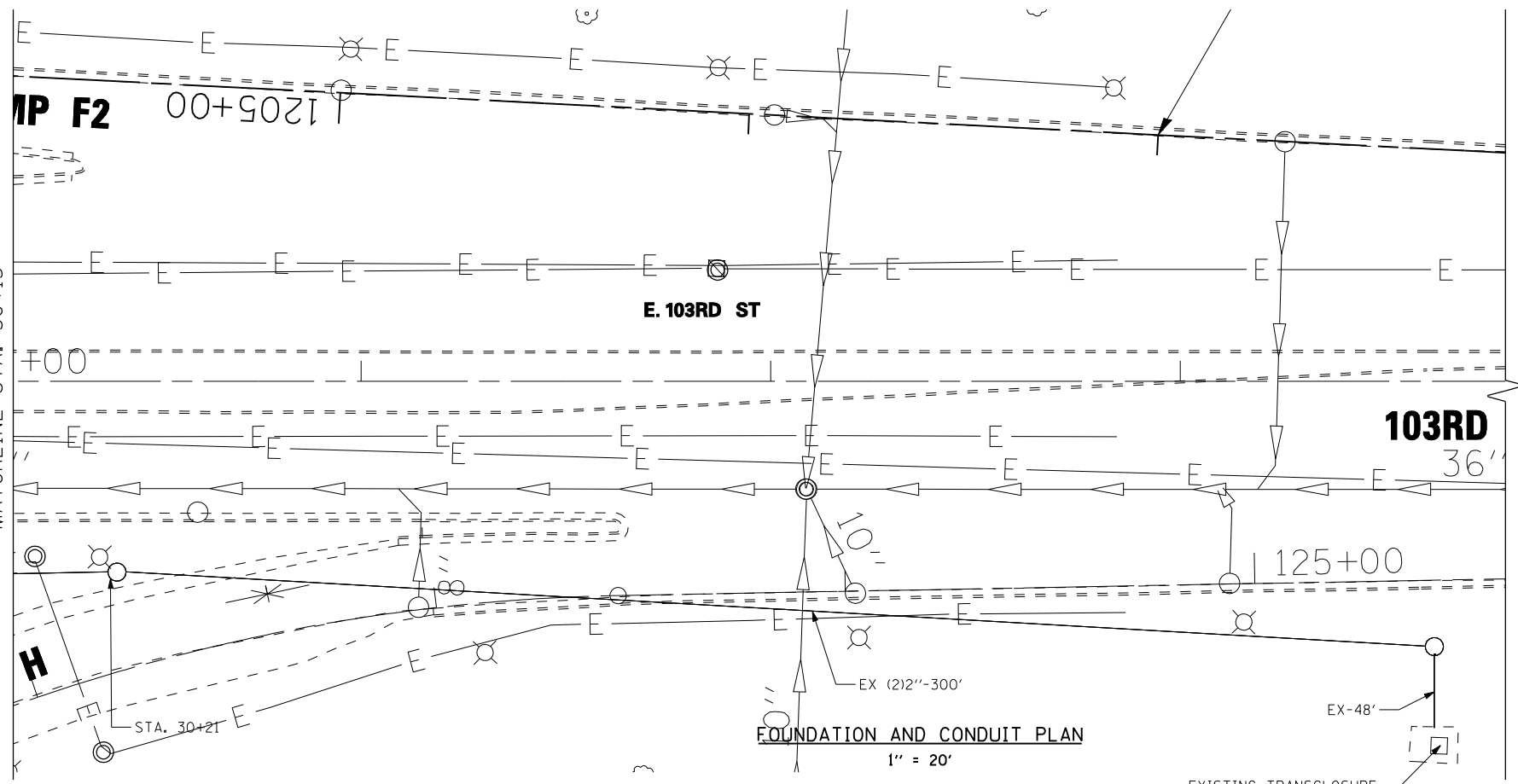
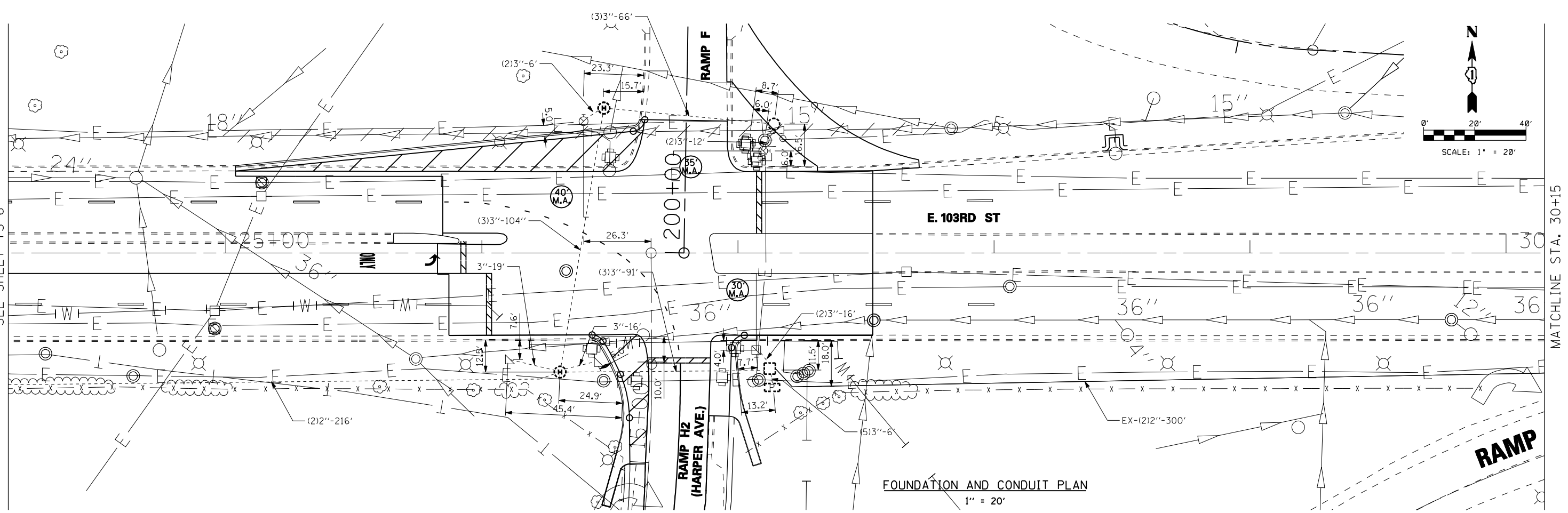


12/6/2012 9:31:12 AM p:\projects\3010\_stony\_island\_feeder - bbe\project\_work\disciplines\traffic\_signals\sheet\0160J12-sht-ts\_03.dgn



**CONSTRUCTION NOTES**

- ALL FOUNDATIONS TO BE INSTALLED PER DRAWINGS #828 AND #888
- FOR CODE SHEET SEE DRAWING #826
- CONDUITS SHALL BE SCHEDULE 40 UNDER SIDEWALK OR PARKWAY AND SCHEDULE 80 UNDER PAVEMENT UNLESS OTHERWISE SPECIFIED.
- CONTRACTOR SHALL DETERMINE THE EXACT LOCATION OF THE EXISTING CONDUIT IN FIELD. THIS WORK SHALL NOT BE PAID FOR SEPARATELY AND SHALL BE CONSIDERED INCLUDED IN INTERCEPT EXISTING CONDUIT PAY ITEM.
- NON-SIGNAL UTILITY WORK SHOWN FOR REFERENCE ONLY.
- CONTROLLER SHALL BE ATC WITH FIBER OPTIC INTERFACE AND MODEM.

DWG. NO.  
22884  
-3  
DATE: 08/03/2012

USER NAME = sadhikari	DESIGNED - SA	REVISED -		<b>STATE OF ILLINOIS DEPARTMENT OF TRANSPORTATION</b>	<b>TRAFFIC CONTROL SIGNAL PLAN 103RD ST. &amp; STONY ISLAND AVE. RAMP F/RAMP H2</b>	F.A.I. RTE. 94	SECTION 2012-060-BR	COUNTY COOK	TOTAL SHEETS 285	SHEET NO. 128
PLOT SCALE = 50.000' / IN.	CHECKED - BKS	REVISED -				CONTRACT NO. 60V61		ILLINOIS FED. AID PROJECT		
PLOT DATE = 12/6/2012	DATE - 12/07/2012	REVISED -				SCALE: AS NOTED	SHEET NO. 3 OF 4 SHEETS	STA. TO STA.		