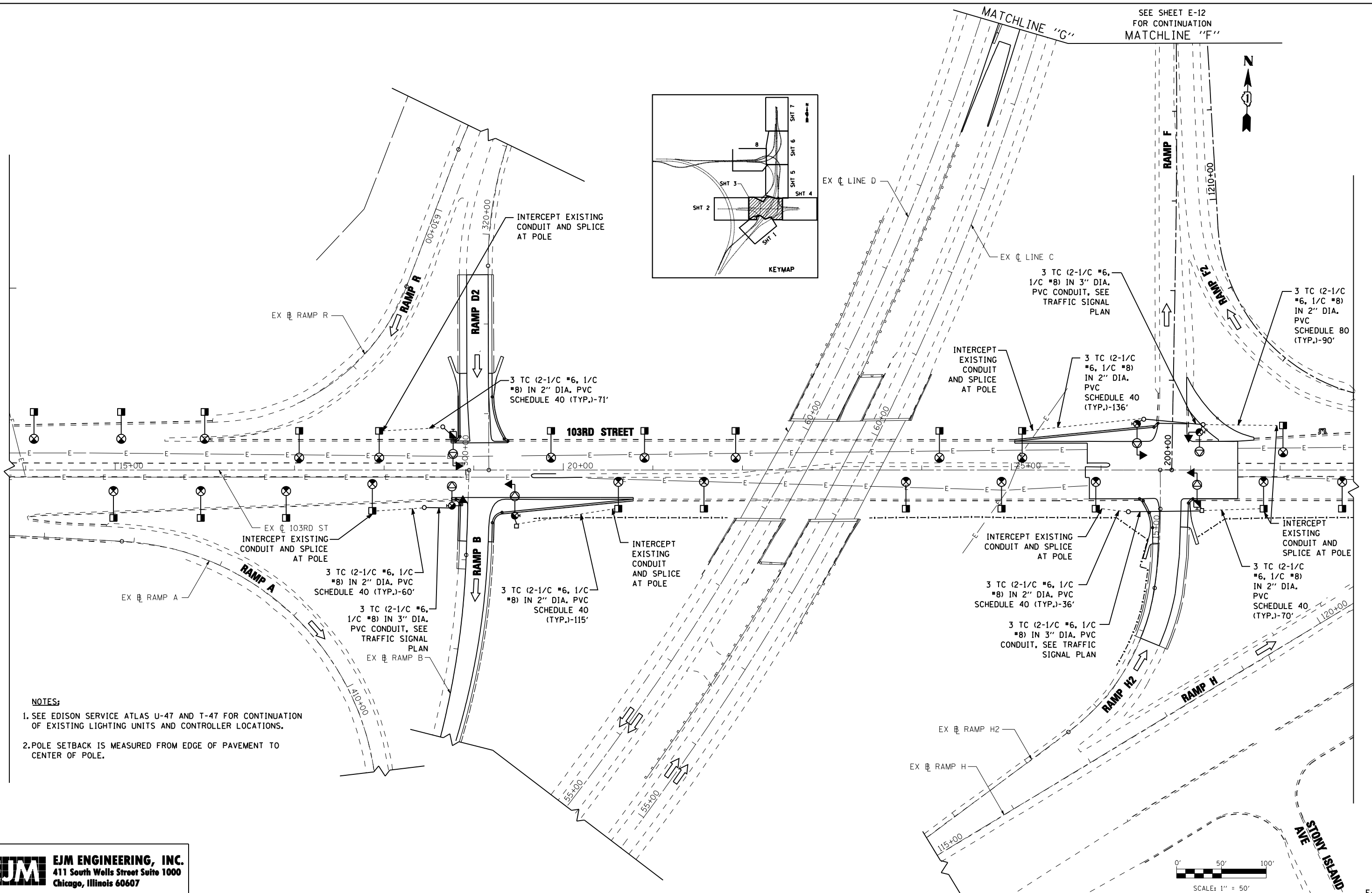
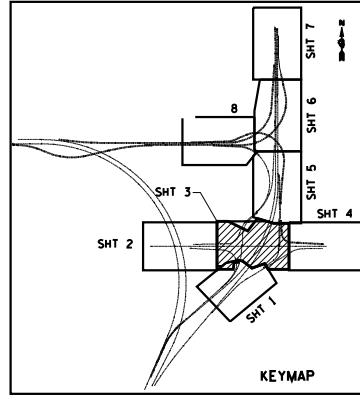


SEE SHEET E-12
FOR CONTINUATION
MATCHLINE "F"



- NOTES:**
1. SEE EDISON SERVICE ATLAS U-47 AND T-47 FOR CONTINUATION OF EXISTING LIGHTING UNITS AND CONTROLLER LOCATIONS.
 2. POLE SETBACK IS MEASURED FROM EDGE OF PAVEMENT TO CENTER OF POLE.

EJM ENGINEERING, INC.
411 South Wells Street Suite 1000
Chicago, Illinois 60607

FILE NAME =	USER NAME = rswanson	DESIGNED - JL	REVISED -
		DRAWN - BKG	REVISED -
	PLOT SCALE = 50.000' / IN.	CHECKED - MKR	REVISED -
	PLOT DATE = 12/18/2012	DATE - 12/07/2012	REVISED -

**STATE OF ILLINOIS
DEPARTMENT OF TRANSPORTATION**

**PROPOSED LIGHTING PLAN
103RD STREET**

SCALE: 1"=50' SHEET NO. 1 OF 4 SHEETS STA. 13+81 TO STA. 28+82

F.A.I. RTE. 94	SECTION 2012-060-BR	COUNTY COOK	TOTAL SHEETS 285	SHEET NO. 148
				CONTRACT NO. 60V61
ILLINOIS FED. AID PROJECT				

E-11
D:\projects\3810 stony island feeder - bba\project work\cadd sheets\16061-st-1ght-11.dgn