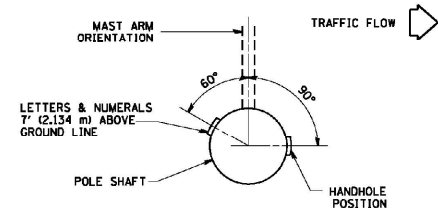
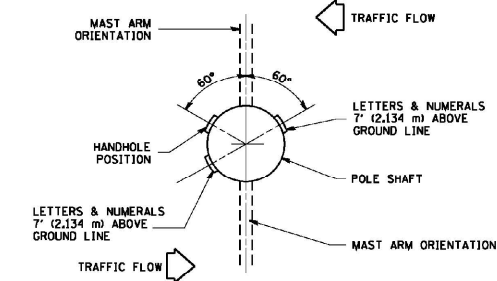


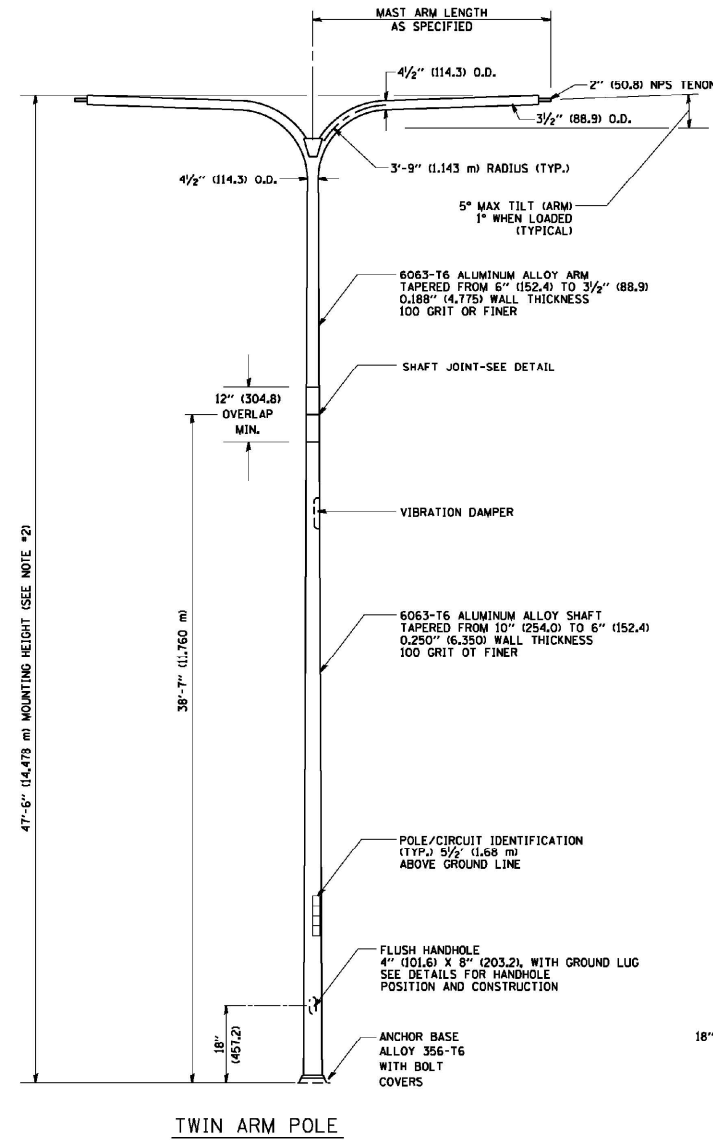
POSITION OF HANDHOLE AND POLE NUMBER FOR SINGLE MAST ARM POLES MOUNTED ON BRIDGE PARAPET OR BARRIER WALL



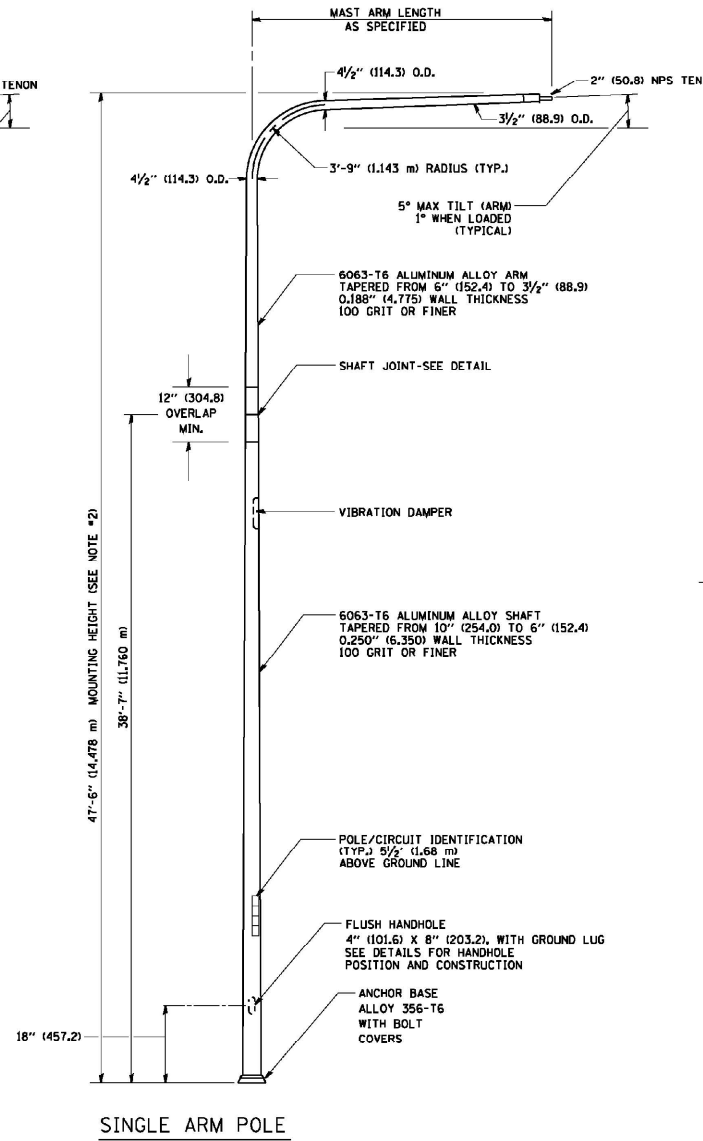
POSITION OF HANDHOLE AND POLE NUMBER FOR SINGLE MAST ARM POLES



POSITION OF HANDHOLE AND POLE NUMBER FOR TWIN MAST ARM POLES

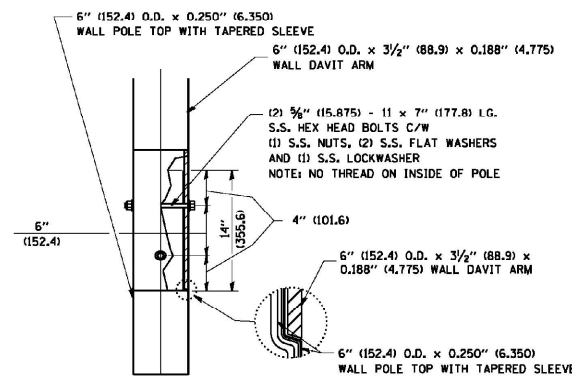


TWIN ARM POLE

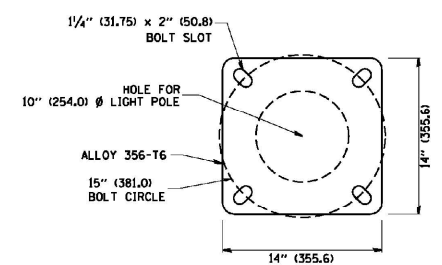


SINGLE ARM POLE

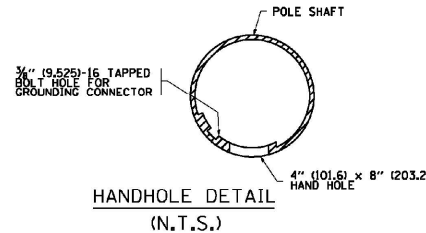
- NOTES:
1. ALL DIMENSIONS ARE IN INCHES (MILLIMETERS) UNLESS OTHERWISE SHOWN.
  2. MOUNTING HEIGHT IS DEFINED AS THE DISTANCE FROM THE CENTERLINE OF THE TENON TO THE BOTTOM OF THE ANCHOR BASE.
  3. TWO PIECE SHAFT WILL BE MATCHED MARKED AND INTERCHANGEABLE BETWEEN DIFFERENT UNITS. FIELD DRILLING OF THE HOLES WILL NOT BE ALLOWED.
  4. THE LIGHT POLE WILL MEET AASHTO DESIGN CRITERIA AS SPECIFIED.
  5. THE INSTALLING CONTRACTOR WILL PROVIDE A UL LISTED GROUNDING CONNECTOR, BURNDY K2C25, T&B SP4DL OR APPROVED EQUAL.
  6. LIGHT POLES WILL NOT BE INSTALLED WITHOUT MAST ARMS AND LUMINAIRES.
  7. LIGHT POLES WILL BE SET PLUMB ON THE FOUNDATION WITHOUT THE USE OF LEVELING NUTS, WASHERS OR SHIMS.
  8. LIGHTING UNIT IDENTIFICATION NUMBERS SHALL BE INSTALLED BEFORE THE LIGHTING UNIT IS ENERGIZED.



DAVIT ARM CONNECTION  
[14" (355.6) OVERLAP SHOWN]



LIGHT POLE BASE PLATE DETAIL  
(FOR POLE MOUNTED ON 15 INCH (381.0) BOLT CIRCLE FOUNDATION)



HANDHOLE DETAIL  
(N.T.S.)

FILE NAME = W:\diststd\22x34\be418.dgn	USER NAME = geglennob	DESIGNED - DRAWN - LEY	REVISED - D. DREW 04-02-92 REVISED - D. DREW 05-07-92	<b>STATE OF ILLINOIS DEPARTMENT OF TRANSPORTATION</b>	<b>DAVIT LIGHT POLE 47'-6" (14.478 m) MOUNTING HEIGHT</b>		F.A.I. RTE.	SECTION	COUNTY	TOTAL SHEETS	SHEET NO.
PLOT SCALE = 50.000' / IN.	CHECKED -	REVISED - R. TOMSONS 09-06-00	SCALE: NONE		SHEET NO. 1 OF 1 SHEETS	STA.	TO STA.	<b>BE-410</b>		CONTRACT NO.	
PLOT DATE = 1/4/2008	DATE -	REVISED - R. TOMSONS 09-02-03					FED. ROAD DIST. NO. 1 ILLINOIS FED. AID PROJECT				



FILE NAME =	USER NAME = rswanson	DESIGNED - JL	REVISED -	<b>STATE OF ILLINOIS DEPARTMENT OF TRANSPORTATION</b>	<b>STANDARD DETAILS</b>		F.A.I. RTE.	SECTION	COUNTY	TOTAL SHEETS	SHEET NO.
PLOT SCALE = 50.000' / IN.	CHECKED - MKR	REVISED -	SCALE: NONE		SHEET NO. 8 OF 12 SHEETS	STA.	TO STA.	<b>94</b>		CONTRACT NO. 60V61	
PLOT DATE = 12/6/2012	DATE - 12/07/2012	REVISED -					ILLINOIS FED. AID PROJECT				