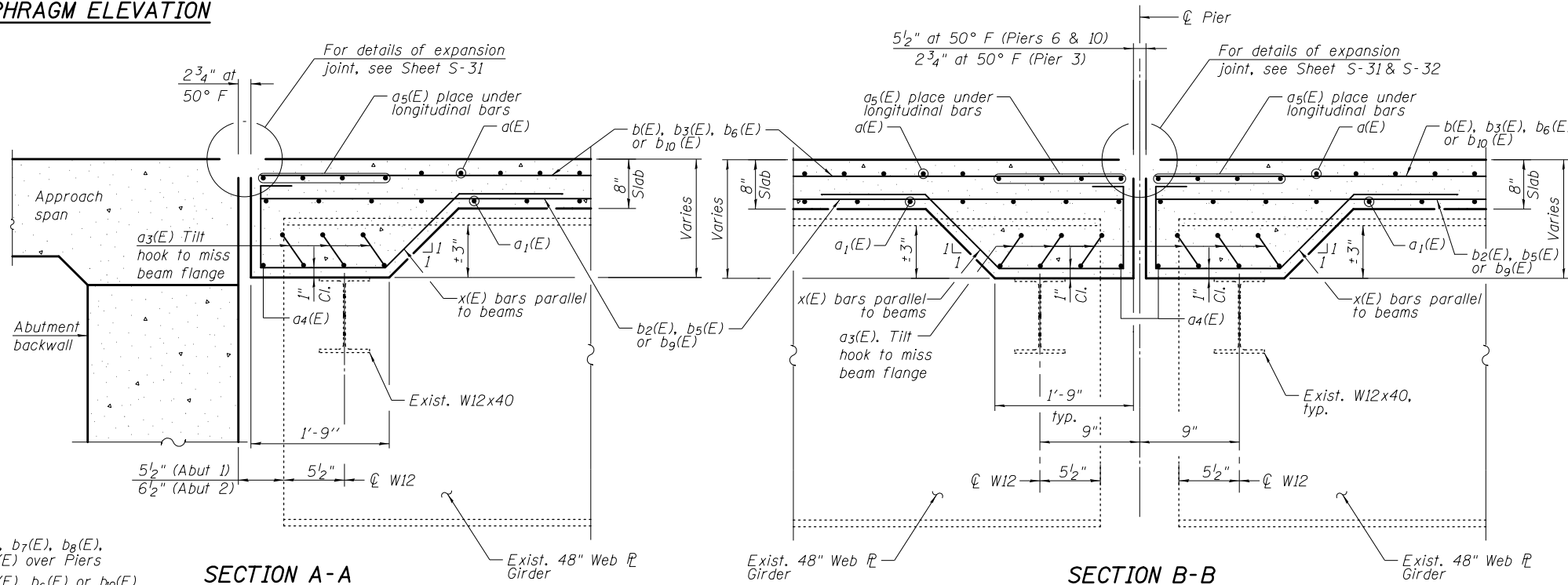
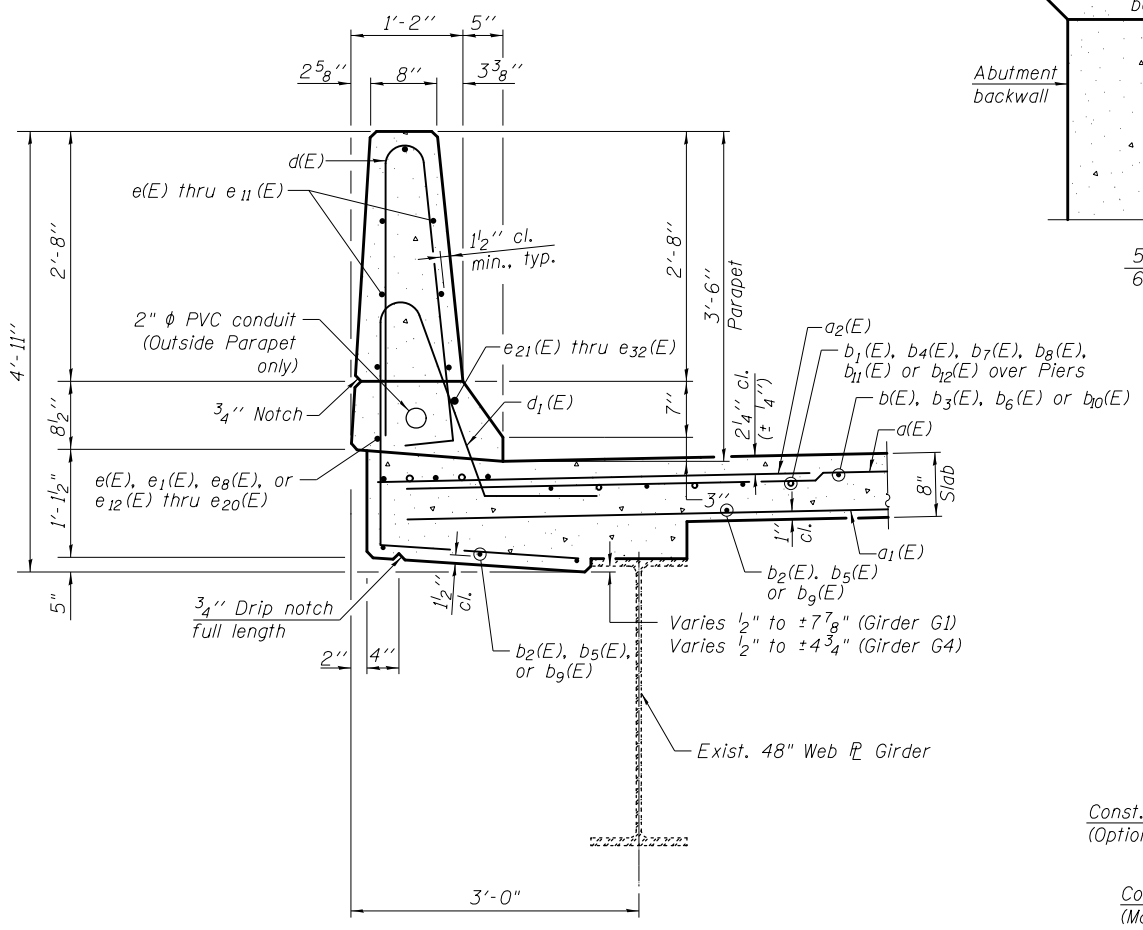


CONCRETE DIAPHRAGM ELEVATION

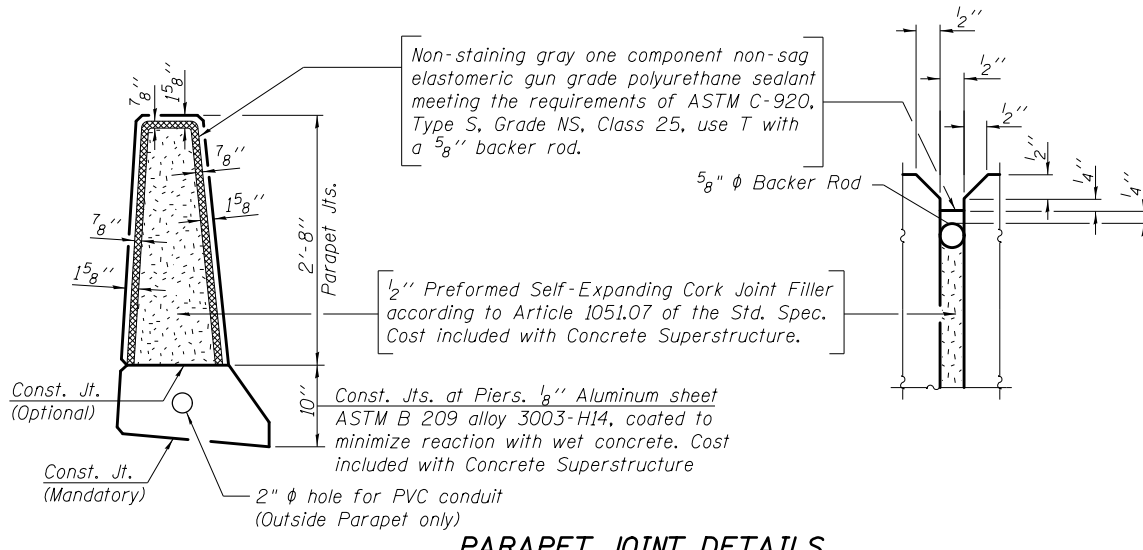


SECTION A-A

SECTION B-B



SECTION THRU PARAPET



PARAPET JOINT DETAILS

- Notes:
1. All edges shall have standard 3/4" chamfer except as noted.
 2. The Contractor may pour each deck unit end to end in one pour, starting from Abutment 1 or 2, as long as a hold down is provided for each girder at the locations shown below prior to the pour. See sheet S-24 for girder hold-down detail. For all other pouring sequences or hold-downs, the Contractor shall submit details & calculations stamped by an Illinois licensed Structural Engineer to the Engineer for review & approval. Cost included with Concrete Superstructure.

Pour from Abut 1 to Abut 2			
Unit	Span	Pier	Hold Down Force (k)
1	3	3	1
2	6	6	2

Pour from Abut 2 to Abut 1			
Unit	Span	Pier	Hold Down Force (k)
1	1	Abut 1	1
2	4	3	2
3	7	6	8
4	11	10	1

2/26/10 PM

12/7/2012

S:\1072_05_CADD\Structure\1\SN 0162437\CADD Sheets\0162437-60V12-021-5001.dgn

BOWMAN, BARRETT & ASSOCIATES INC.
CONSULTING ENGINEERS
Chicago, Illinois
312.228.0100
www.bbainc.com

USER NAME =	DESIGNED - IYL	REVISED -
PLOT SCALE =	CHECKED - BAK	REVISED -
PLOT DATE = 11/08/2012	DRAWN - MTR	REVISED -
	CHECKED - IYL	REVISED -

STATE OF ILLINOIS
DEPARTMENT OF TRANSPORTATION

SUPSTRUCTURE DETAILS I
STRUCTURE NO. 016-2437

SHEET NO. S-21 OF S-83 SHEETS

F.A.I. RTE.	SECTION	COUNTY	TOTAL SHEETS	SHEET NO.
94	2012-060-BR	COOK	285	184
CONTRACT NO. 60V61				

ILLINOIS FED. AID PROJECT