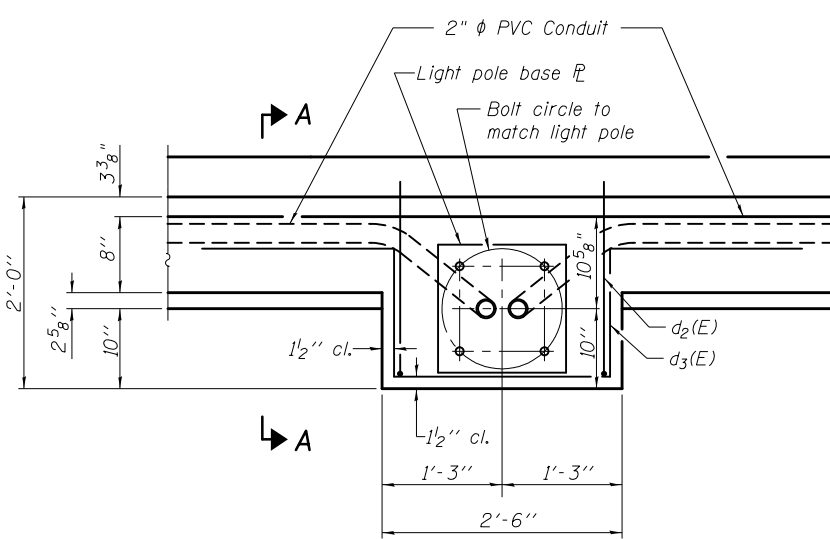


SECTION A-A

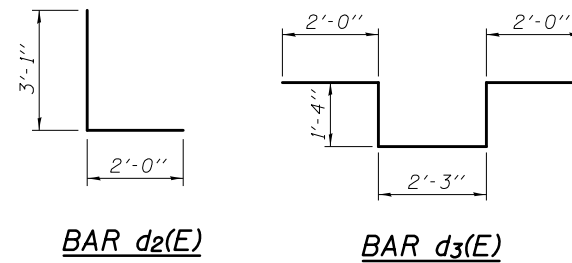
Notes:

Cost of anchor rods is included with Concrete Superstructure.

See Sheets S-17 through S-20 for bill of reinforcement bars shown.

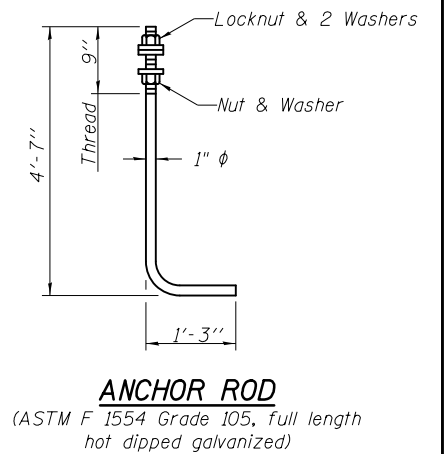


LIGHT POLE FOUNDATION PLAN

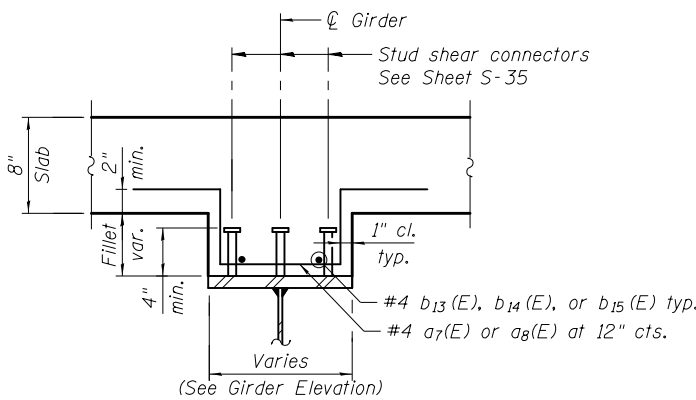


BAR d2(E)

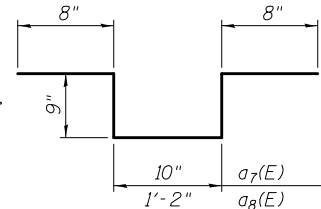
BAR d3(E)



ANCHOR ROD
(ASTM F 1554 Grade 105, full length hot dipped galvanized)

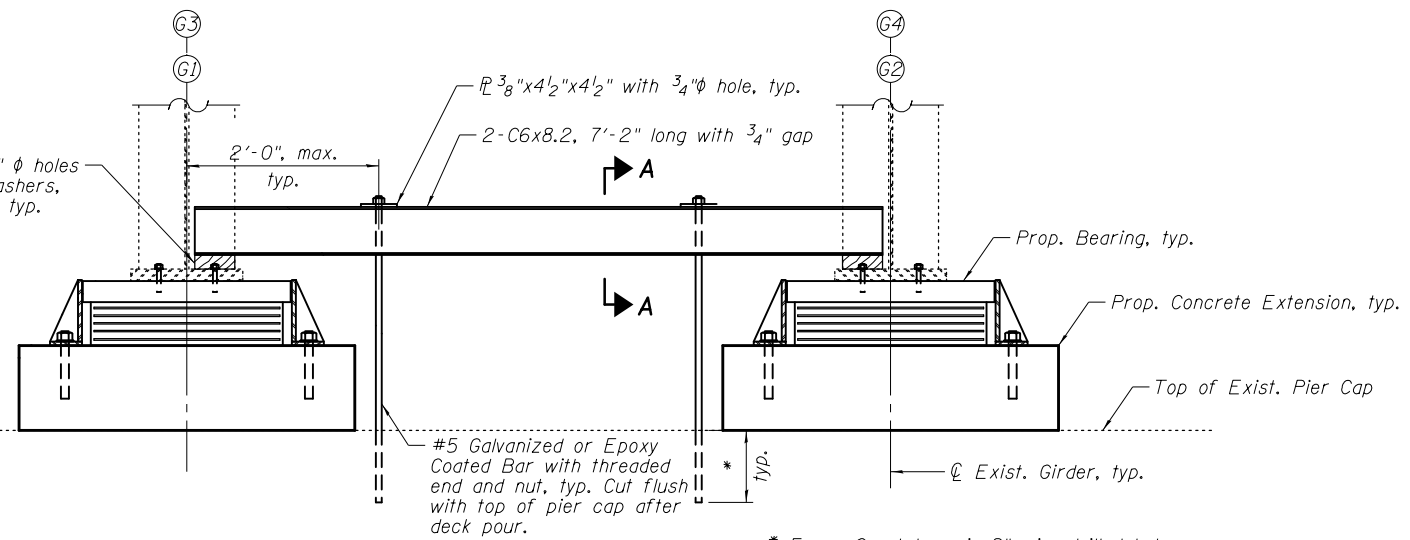


DEEP FILLET REINFORCEMENT
(For fillet heights greater than 6")



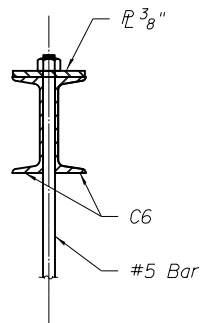
BARS a7(E) & a8(E)

5"x5" min. timber block with 1/2 inch diameter holes for threaded studs, nuts and washers, centered under double channels, typical.



GIRDER HOLD-DOWN
(Place as close to center of bearing as feasible)

* Epoxy Grout bars in 9" min. drilled holes according to Section 584 of the Standard Specifications



SECTION A-A

DEEP FILLET REINFORCEMENT DATA

| Location | Estimated Limits | Length (ft) | Transverse bars | Longitudinal bars | |
|-----------|------------------------------|------------------------------|-----------------|-------------------|----------------|
| Unit 1 | Girder G1 | Sta. 1705+88 to Sta. 1706+10 | 22'-0" | 2x1- #4 a7(E) | 2x1- #4 b13(E) |
| | | Sta. 1706+60 to Sta. 1707+08 | 48'-0" | 49- #4 a7(E) | 2x2- #4 b13(E) |
| | Girders G2 & G4 | Sta. 1705+57 to Sta. 1706+10 | 53'-0" | 54- #4 a7(E) | 2x2- #4 b14(E) |
| | | Sta. 1706+60 to Sta. 1707+28 | 68'-0" | 69- #4 a7(E) | 2x3- #4 b13(E) |
| Girder G3 | Sta. 1705+57 to Sta. 1706+10 | 53'-0" | 54- #4 a7(E) | 2x2- #4 b14(E) | |
| | Sta. 1706+60 to Sta. 1707+95 | 135'-0" | 136- #4 a7(E) | 2x6- #4 b13(E) | |
| Unit 3 | G2 thru G4 | Sta. 1713+75 to Sta. 1714+23 | 48'-0" | 49- #4 a8(E) | 2x2- #4 b13(E) |
| Unit 4 | Girder G1 | Sta. 1715+19 to Sta. 1715+35 | 16'-0" | 17- #4 a8(E) | 2x1- #4 b15(E) |

Notes:

- Bars indicated thus 2x3- #4 etc. indicates 2 lines of bars with 3 lengths per line.
- Limits of deep fillets are estimated and are subject to variation. The Contractor shall field verify fillet depths after deck forms have been set and make necessary approved adjustments prior to construction or ordering of material. Such variations shall not be cause for additional compensation for a change in scope of the work, however, the Contractor will be paid for the quantity actually furnished at the unit price bid for the work.

STATE OF ILLINOIS
DEPARTMENT OF TRANSPORTATION

SUPERSTRUCTURE DETAILS IV
STRUCTURE NO. 016-2437

SHEET NO. S-24 OF S-83 SHEETS

| F.A.I. RTE. | SECTION | COUNTY | TOTAL SHEETS | SHEET NO. |
|---------------------------|-------------|--------|--------------|-----------|
| 94 | 2012-060-BR | COOK | 285 | 187 |
| CONTRACT NO. 60V61 | | | | |
| ILLINOIS FED. AID PROJECT | | | | |

2/26/11 PM

S:\1072_05_CADD\Structure\1 SN 0162437\CADD Sheets\0162437-60J12-024-Light Pole.dwg#7/2012

BOWMAN, BARRETT & ASSOCIATES INC.
CONSULTING ENGINEERS
Chicago, Illinois
312.228.0100
www.bbainc.com



USER NAME =
DESIGNED - IYL
CHECKED - BAK
PLOT SCALE =
DRAWN - MTR
PLOT DATE = 11/08/2012

DESIGNED - IYL
CHECKED - BAK
DRAWN - MTR
CHECKED - IYL

REVISED -
REVISED -
REVISED -
REVISED -