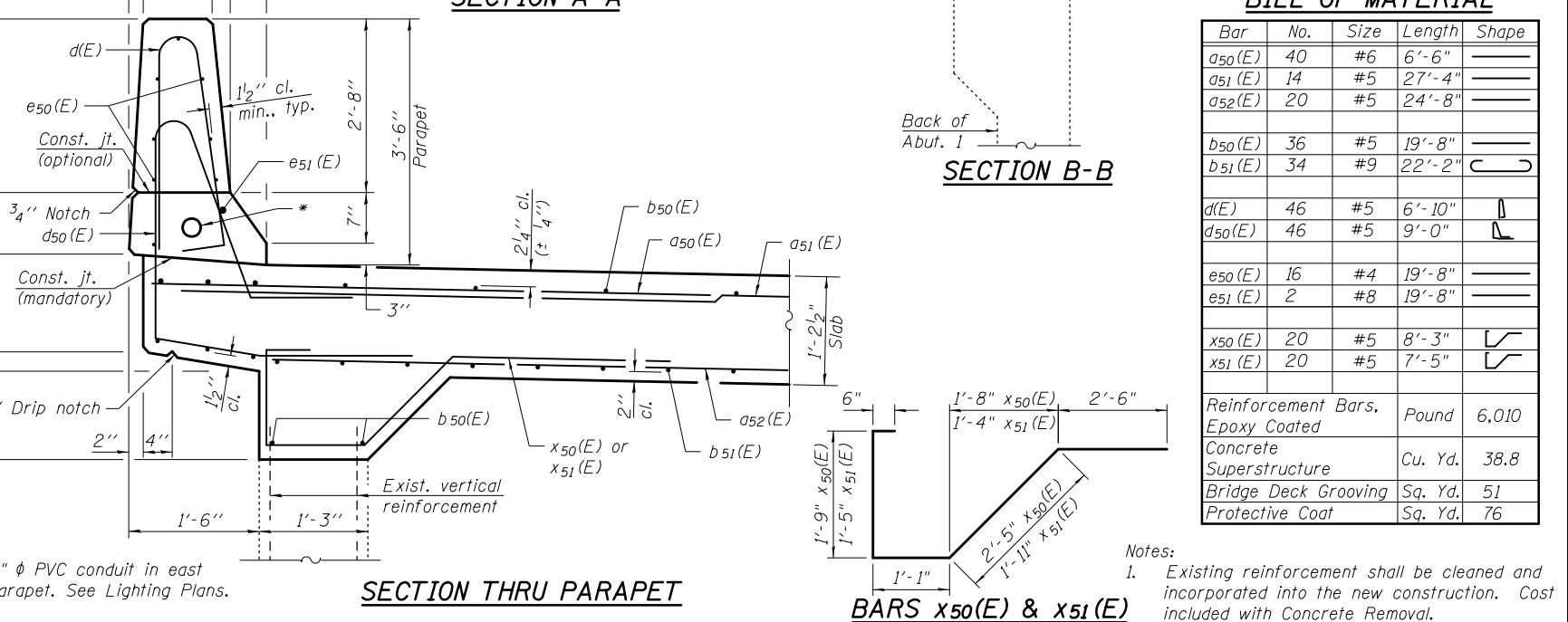
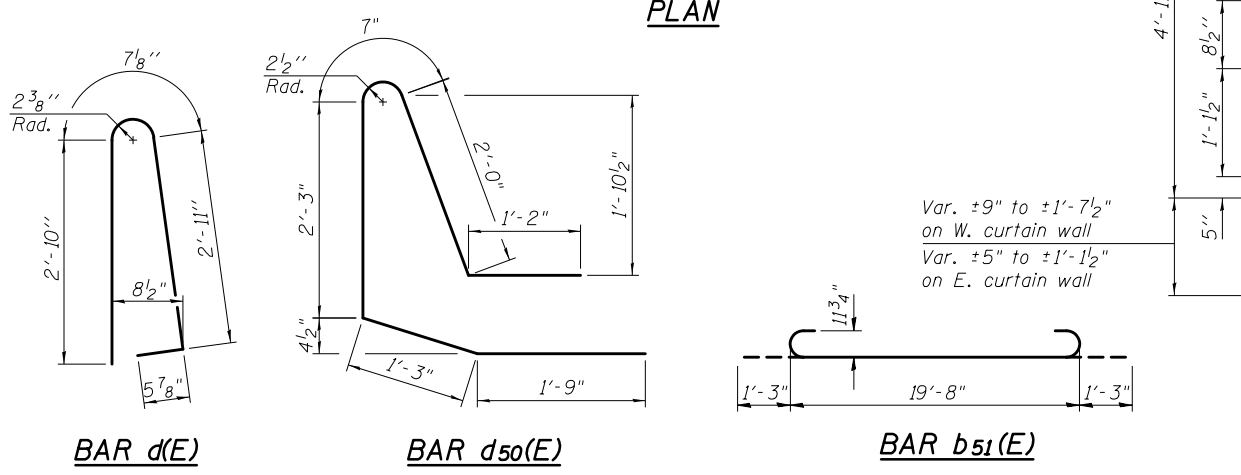
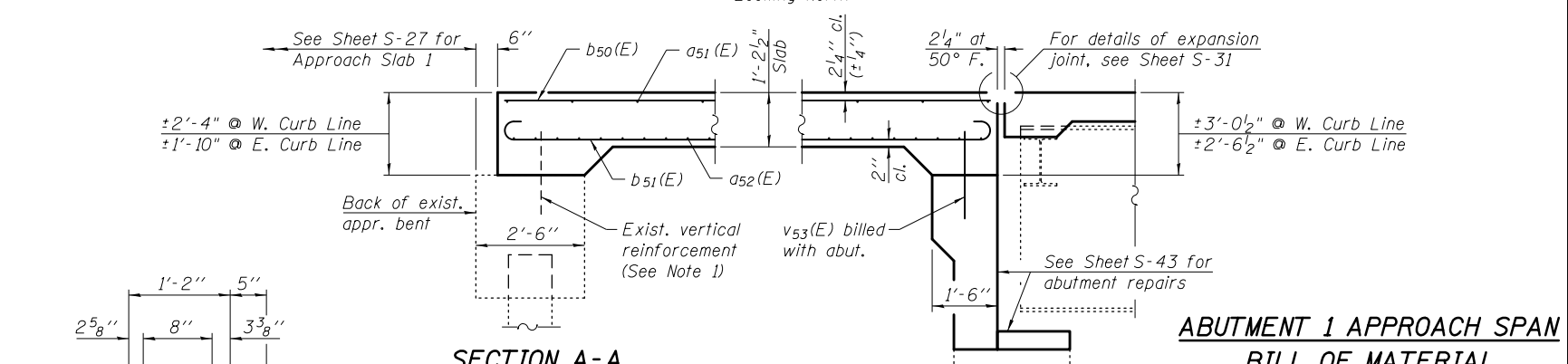
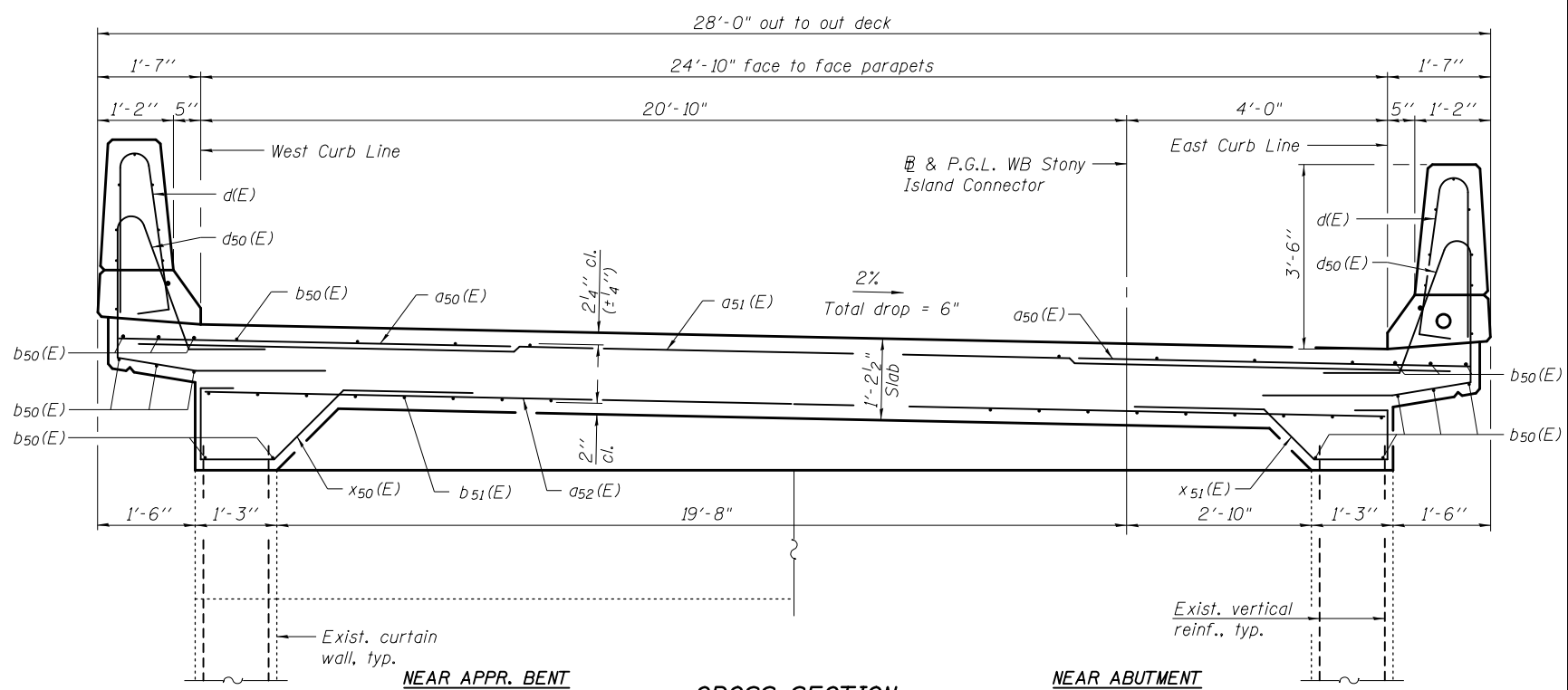
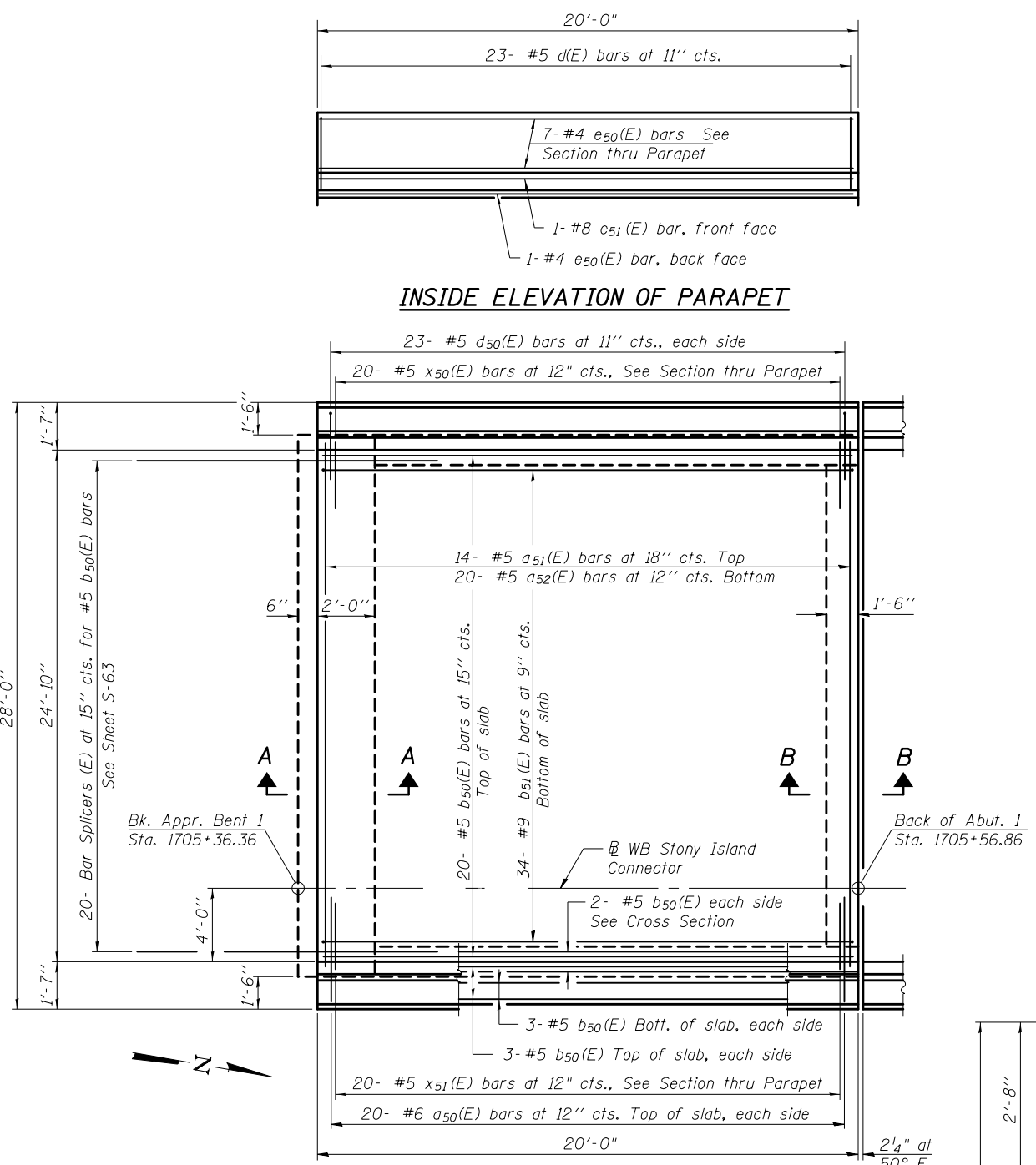


2/26/12 PM

SA:1072.05-CADD/S-structure-1 SN:0162437-CADD Sheets:1062437-6012-025-Appr-Span-01.dgn:12/7/2012



ABUTMENT 1 APPROACH SPAN BILL OF MATERIAL

Bar	No.	Size	Length	Shape
a ₅₀ (E)	40	#6	6'-6"	—
a ₅₁ (E)	14	#5	27'-4"	—
a ₅₂ (E)	20	#5	24'-8"	—
b ₅₀ (E)	36	#5	19'-8"	—
b ₅₁ (E)	34	#9	22'-2"	—
d(E)	46	#5	6'-10"	⌋
d ₅₀ (E)	46	#5	9'-0"	⌋
e ₅₀ (E)	16	#4	19'-8"	—
e ₅₁ (E)	2	#8	19'-8"	—
x ₅₀ (E)	20	#5	8'-3"	⌋
x ₅₁ (E)	20	#5	7'-5"	⌋
Reinforcement Bars, Epoxy Coated	Pound		6,010	
Concrete Superstructure	Cu. Yd.		38.8	
Bridge Deck Grooving	Sq. Yd.		51	
Protective Coat	Sq. Yd.		76	

Notes:
1. Existing reinforcement shall be cleaned and incorporated into the new construction. Cost included with Concrete Removal.

BOWMAN, BARRETT & ASSOCIATES INC. CONSULTING ENGINEERS Chicago, Illinois 312.228.0100 www.bbainc.com

USER NAME =	DESIGNED - TL	REVISOR -
PLOT SCALE =	CHECKED - BAK	REVISOR -
PLOT DATE = 11/08/2012	DRAWN - TL	REVISOR -
	CHECKED - BAK	REVISOR -

STATE OF ILLINOIS DEPARTMENT OF TRANSPORTATION

ABUTMENT 1 APPROACH SPAN STRUCTURE NO. 016-2437 SHEET NO. S-25 OF S-83 SHEETS

F.A.I. RTE.	SECTION	COUNTY	TOTAL SHEETS	SHEET NO.
94	2012-060-BR	COOK	285	188
CONTRACT NO. 60V61				
ILLINOIS FED. AID PROJECT				