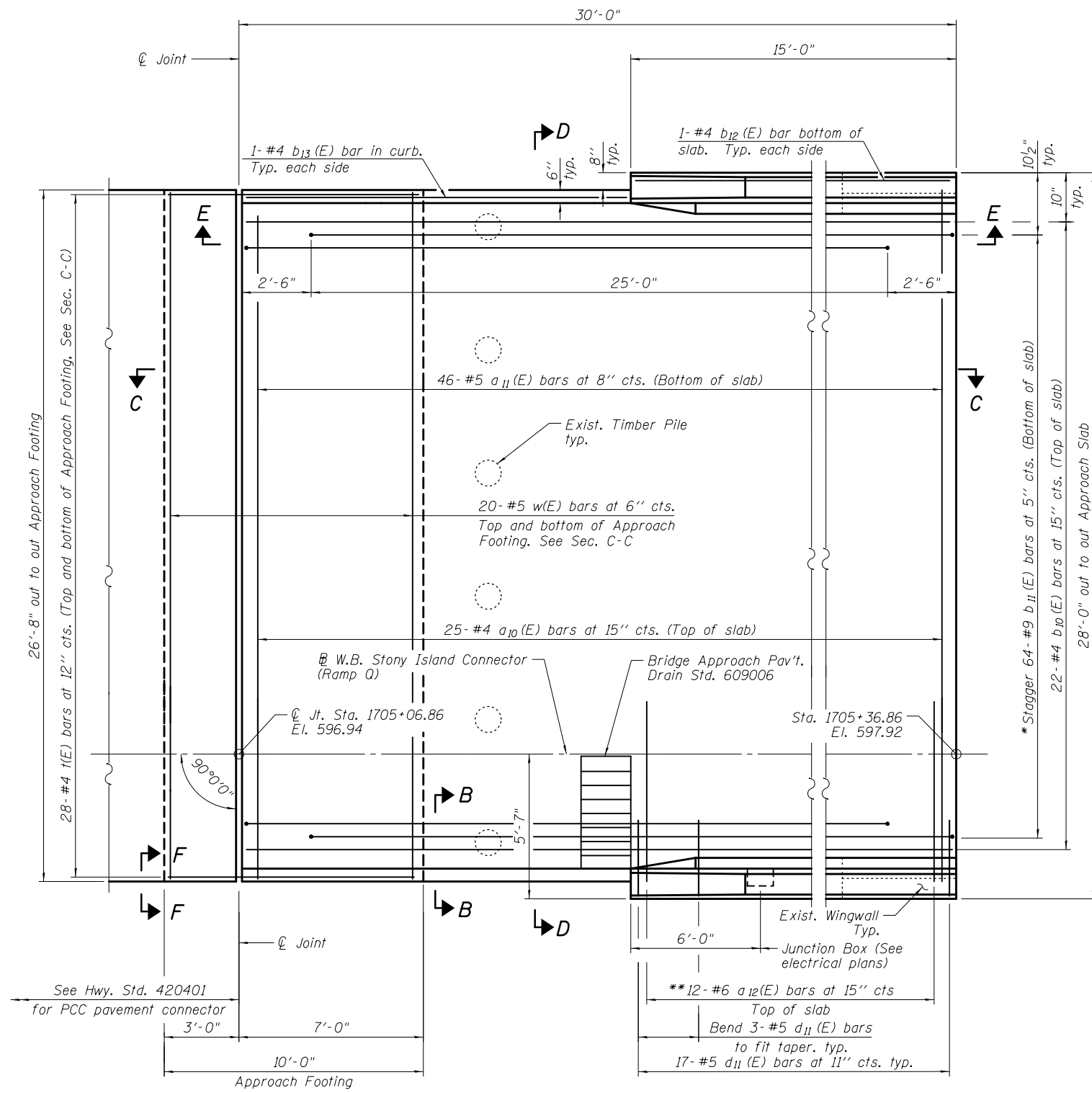


2/26/13 PM

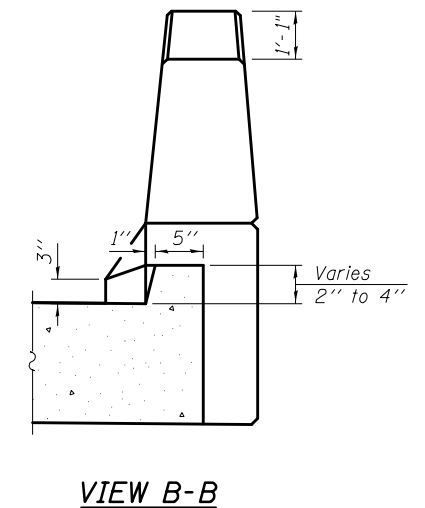
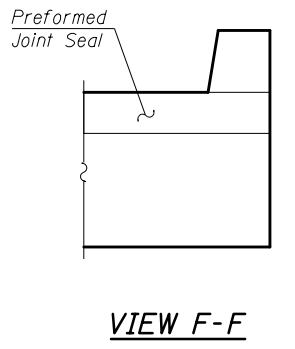
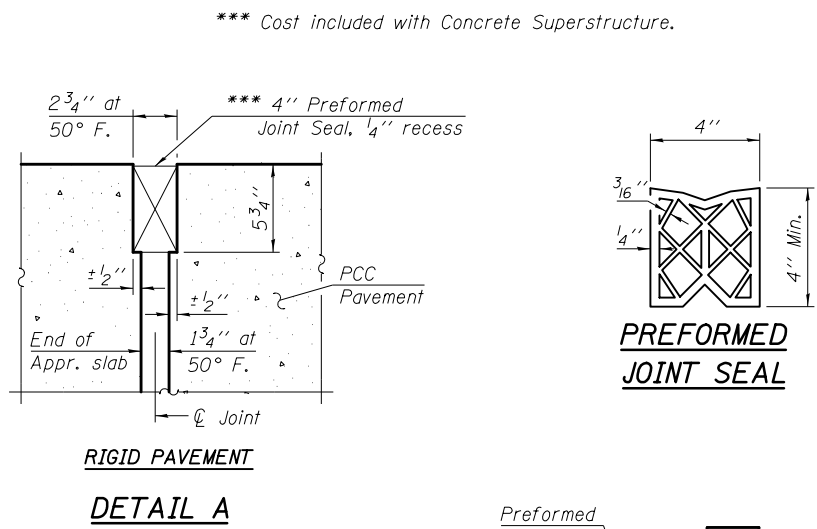
S:\1072\_05\_CADD\Structure\1 SN 0162437\CADD Sheets\0162437-027-ApprBent01.dgn 12/7/2012



**APPROACH SLAB 1 PLAN**

\* Tilt #9 b<sub>11</sub>(E) bars as required to maintain clearance.  
 \*\* Space between a<sub>10</sub>(E) bars, typ. ea. parapet.

Notes:  
 See sheet S-28 for Sections C-C & D-D and View E-E.  
 a<sub>10</sub>(E) and a<sub>11</sub>(E) bar spacings measured along  $\bar{R}$  Rdwy.



**VIEW B-B**

BOWMAN, BARRETT & ASSOCIATES INC.  
 CONSULTING ENGINEERS  
 Chicago, Illinois  
 312.228.0100  
 www.bbainc.com

USER NAME =	DESIGNED - IYL	REVISED -
PLOT SCALE =	CHECKED - BAK	REVISED -
PLOT DATE = 11/08/2012	DRAWN - MTR	REVISED -
	CHECKED - IYL	REVISED -

STATE OF ILLINOIS  
 DEPARTMENT OF TRANSPORTATION

BRIDGE APPROACH SLAB 1 PLAN  
 STRUCTURE NO. 016-2437

SHEET NO. S-27 OF S-83 SHEETS

F.A.I. RTE.	SECTION	COUNTY	TOTAL SHEETS	SHEET NO.
94	2012-060-BR	COOK	285	190
CONTRACT NO. 60V61				

ILLINOIS FED. AID PROJECT