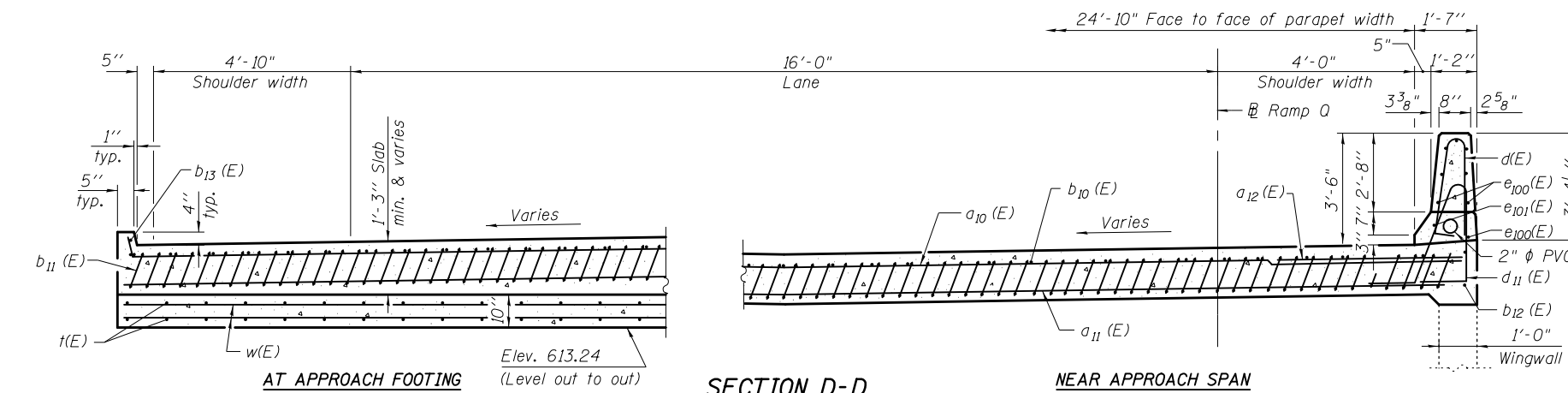


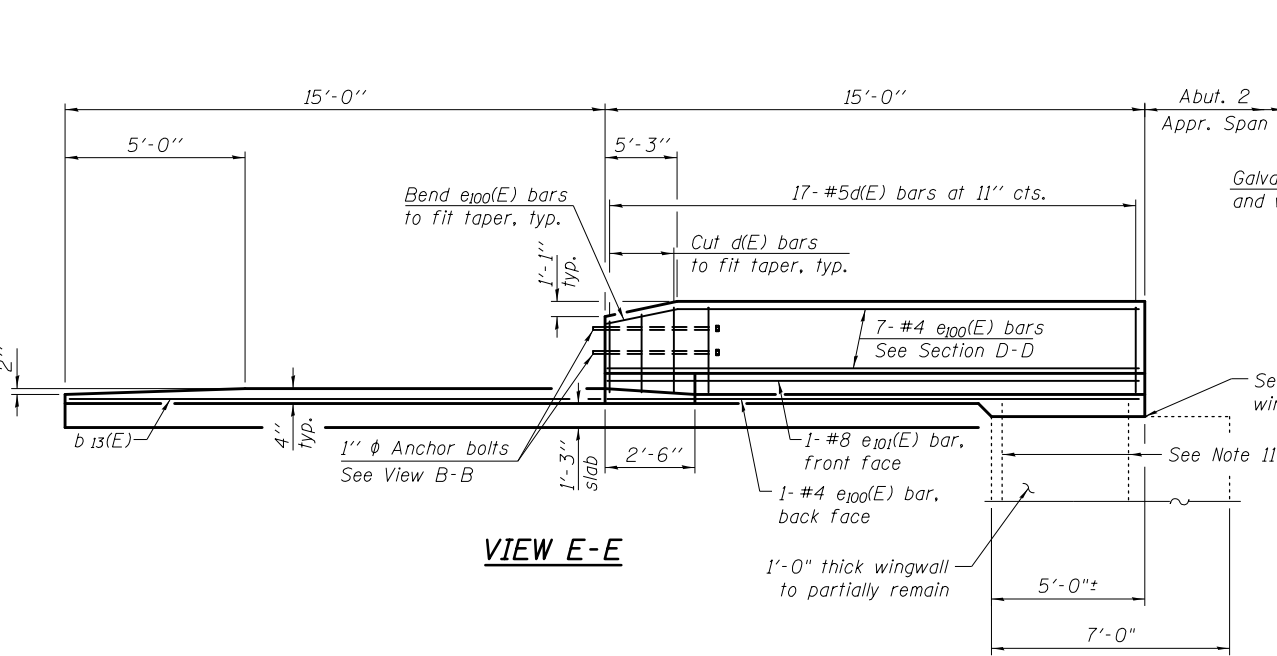
SECTION C-C



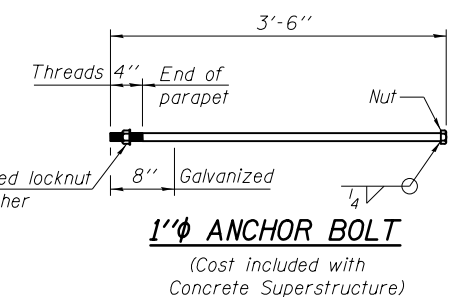
SECTION D-D

AT APPROACH FOOTING

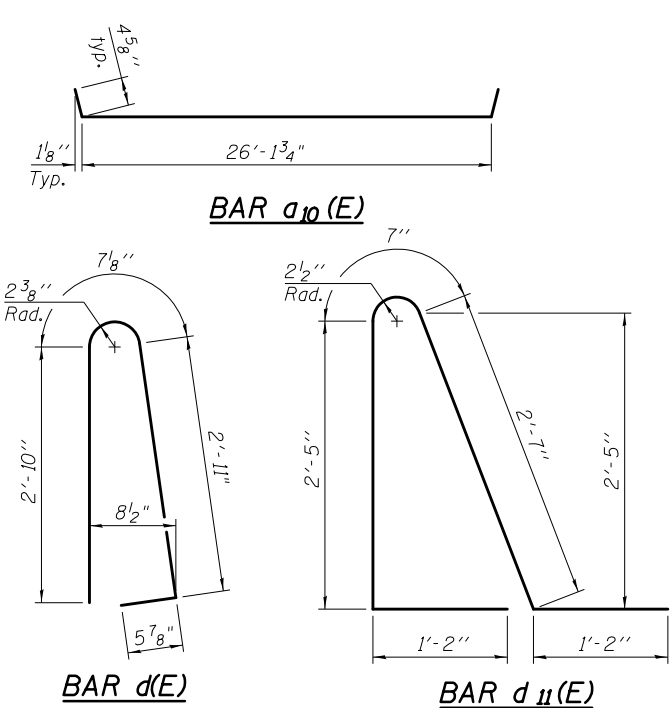
NEAR APPROACH SPAN



VIEW E-E



1"φ ANCHOR BOLT
(Cost included with Concrete Superstructure)



BAR d(E)

BAR d11(E)

BAR b11(E)

**BRIDGE APPROACH SLAB 2
BILL OF MATERIAL**

Bar	No.	Size	Length	Shape
a ₁₀ (E)	25	#4	26'-11"	—
a ₁₁ (E)	46	#5	26'-4"	—
a ₁₂ (E)	24	#6	6'-6"	—
b ₁₀ (E)	22	#4	29'-8"	—
b ₁₁ (E)	64	#9	29'-9"	—
b ₁₂ (E)	2	#4	14'-8"	—
b ₁₃ (E)	2	#4	14'-8"	—
b ₁₄ (E)	27	#4	9'-8"	✓
d(E)	34	#5	6'-10"	⌒
d ₁₁ (E)	34	#5	7'-11"	⌒
e ₁₀₀ (E)	16	#4	14'-8"	—
e ₁₀₁ (E)	2	#8	14'-8"	—
t(E)	56	#4	9'-8"	—
w(E)	40	#5	26'-4"	—
v(E)	27	#5	1'-9"	—
Concrete Superstructure		Cu. Yd.	50.0	
Concrete Structures		Cu. Yd.	9.0	
Reinforcement Bars, Epoxy Coated		Pound	11,340	
Bridge Deck Grooving		Sq. Yd.	83	
Protective Coat		Sq. Yd.	98	
Approach Slab Removal		Sq. Yd.	125	

- Notes:
- See sheet S-29 for Detail A and View B-B.
 - Approach slab and parapet concrete shall be paid for as Concrete Superstructure.
 - Approach footing concrete shall be paid for as Concrete Structures.
 - Reinforcement shall be paid for as Reinforcement Bars, Epoxy Coated.
 - The approach footing maximum applied service bearing pressure (Q_{max}) = 2.0 ksf.
 - For bar splicer details, see sheet S-63.
 - Cost of excavation for approach footing included with Concrete Structures.
 - For Abutment 2 Approach Span details, see sheet S-26.
 - Cost of timber pile cap removal and associated excavation included with Approach Slab Removal.
 - The excavation for pile cap removal shall be backfilled with Subbase Granular Material Type B. Cost included with Concrete Superstructure.
 - Bend existing reinforcement bars protruding from curtain walls and incorporate into new approach slab construction.

* Tilt #9 b₁₁(E) bars as required to maintain clearance.
 *** Cost included with Concrete Superstructure.

2/26/14 PM

12/7/2012

S:\1072_05_CADD\Structure\1 SN 0162437\CADD Sheets\0162437-60J12-930-AS002.dgn

BOWMAN, BARRETT & ASSOCIATES INC.
CONSULTING ENGINEERS
Chicago, Illinois
312.228.0100
www.bbainc.com

USER NAME =	DESIGNED - IYL	REVISED -
PLOT SCALE =	CHECKED - BAK	REVISED -
PLOT DATE = 11/08/2012	DRAWN - MTR	REVISED -
	CHECKED - IYL	REVISED -

STATE OF ILLINOIS
DEPARTMENT OF TRANSPORTATION

BRIDGE APPROACH SLAB 2 DETAILS
STRUCTURE NO. 016-2437

SHEET NO. S-30 OF S-83 SHEETS

F.A.I. RTE.	SECTION	COUNTY	TOTAL SHEETS	SHEET NO.
94	2012-060-BR	COOK	285	193
CONTRACT NO. 60V61				
ILLINOIS FED. AID PROJECT				