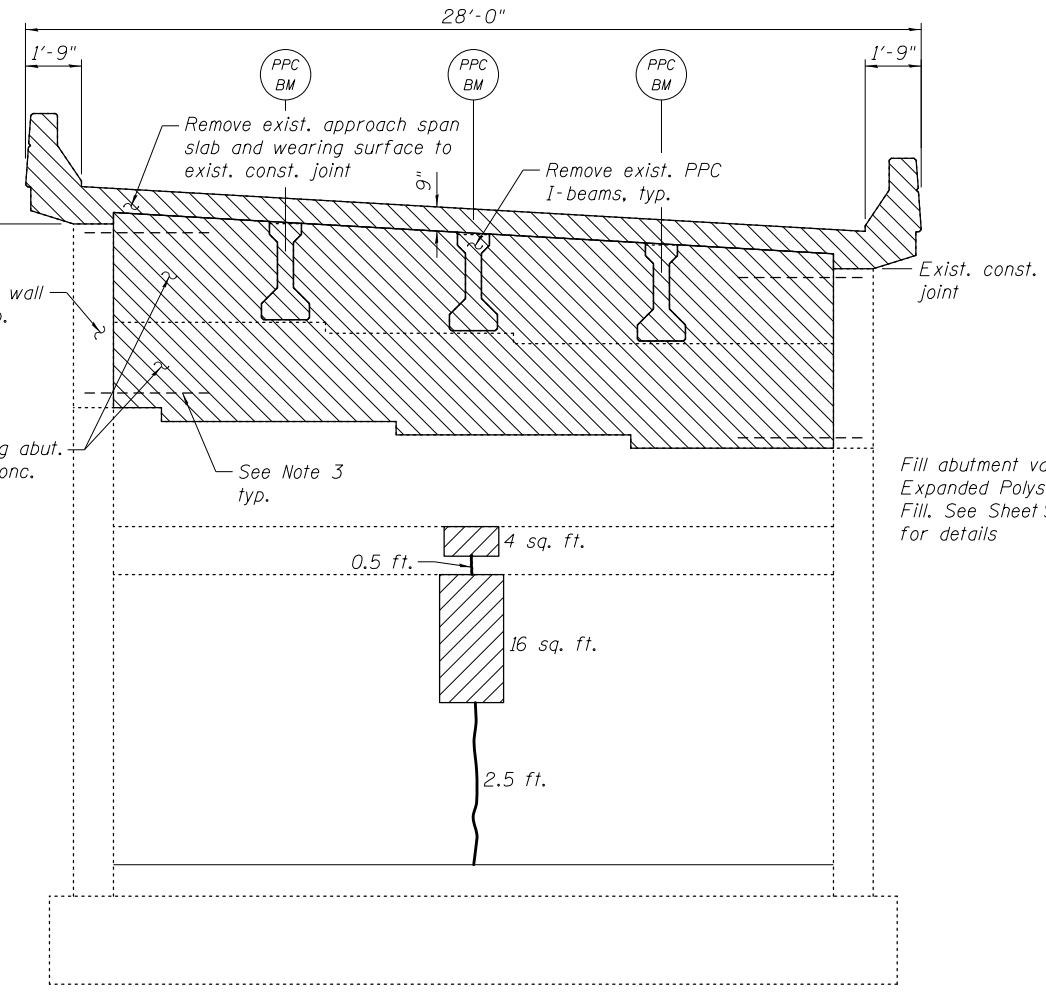
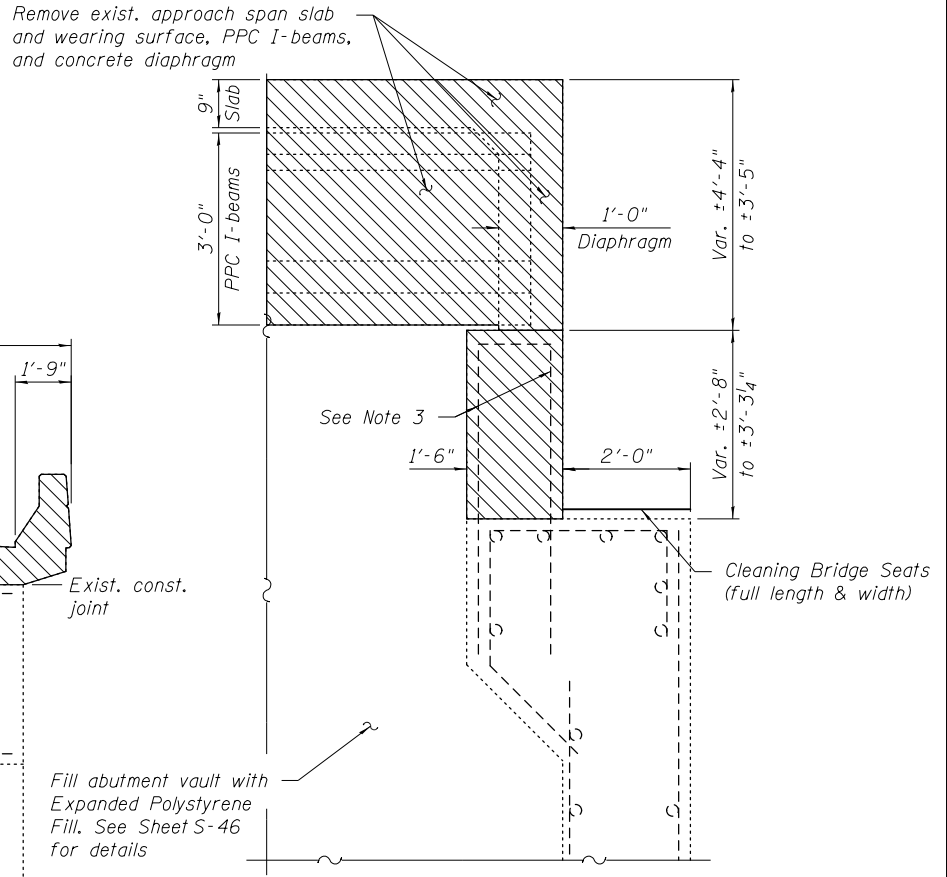


ABUTMENT ELEVATION
(Outside Face)



ABUTMENT ELEVATION
(Inside Face)



SECTION B-B

Fill abutment vault with Expanded Polystyrene Fill. See Sheet S-46 for details

NOTES:

- Actual quantities of repairs shall be approved by the Engineer.
- Any existing reinforcement to remain that is damaged during removal operations shall be repaired or replaced with an approved bar splicer or anchorage system at no additional cost.
- Reinforcement in existing abutment backwall extending into removal area shall be cleaned, straightened, and incorporated into the new construction. Cost included with Concrete Removal.

LEGEND

- Concrete Removal
- Structural Repair of Concrete (Depth equal to or less than 5 inches)
- Structural Repair of Concrete (Depth greater than 5 inches)
- Epoxy Crack Injection

BILL OF MATERIAL

ITEM	UNIT	QUANTITY
Concrete Removal	Cu. Yd.	54
Structural Repair of Concrete (Depth equal to or less than 5 inches)	Sq. Ft.	146
Structural Repair of Concrete (Depth greater than 5 inches)	Sq. Ft.	6
Epoxy Crack Injection	Foot	4
Cleaning Bridge Seats	Sq. Ft.	50
Jack and Remove Existing Bearings	Each	4

2/26/20 PM

SA:\072_05_CADD\Structure\1 SN 0162437\CADD Sheets\0162437-60J12-944-AB02Rem.dgn 12/7/2012

BOWMAN, BARRETT & ASSOCIATES INC.
CONSULTING ENGINEERS
Chicago, Illinois
312.228.0100
www.bbainc.com

USER NAME =	DESIGNED - TL	REVISED -
PLOT SCALE =	CHECKED - BAK	REVISED -
PLOT DATE = 11/08/2012	DRAWN - MTR	REVISED -
	CHECKED - BAK	REVISED -

STATE OF ILLINOIS
DEPARTMENT OF TRANSPORTATION

ABUTMENT 2 REMOVAL AND REPAIR DETAILS I
STRUCTURE NO. 016-2437

SHEET NO. S-44 OF S-83 SHEETS

F.A.I. RTE. 94	SECTION 2012-060-BR	COUNTY COOK	TOTAL SHEETS 285	SHEET NO. 207
CONTRACT NO. 60V61				

ILLINOIS FED. AID PROJECT